



ICEPIC



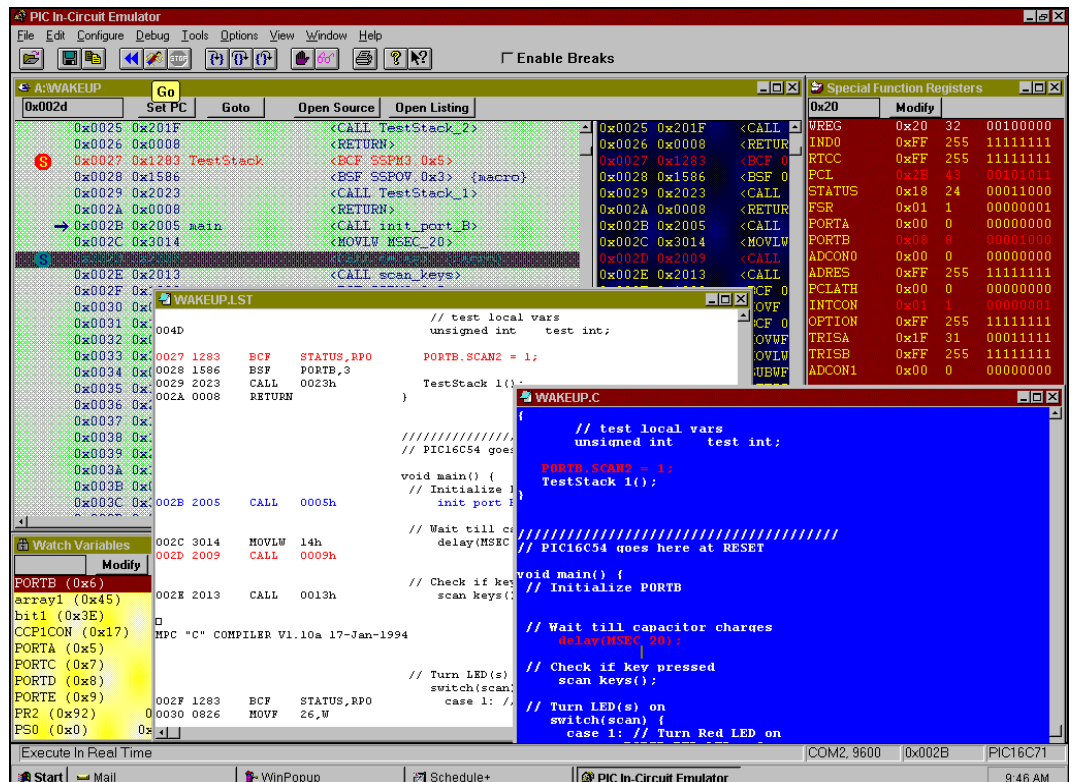
MICROCHIP

MODULAR, REAL TIME EMULATOR SYSTEM FOR PIC16CXX



- Full Speed, Real Time Emulation To 20MHz.
- Can Emulate PIC12CXXX, PIC16C5X & PIC16CXX Devices.
- Source Level Debug In Assembler Or "C".
- Microchip Emulation Chip Inside!
- 16K of 16CXX Emulation Memory
- Compatible With Microchip's Software Tools (Including Mpc "C" Compiler).
- High Speed RS232 Interface (115kBaud).

- Runs Under Microsoft Windows
- Simple To Use Toolbar.
- Unlimited Number of Break Points.
- Single, Multiple & Procedure Step.
- Display & Modify any Register (Program Or Data).
- Display & Work In Hex/Dec/Bin.
- User Selectable Processor Speeds (Via Oscillator Module).
- Same Interface For all PIC's
- Full Context Sensitive Help.





ICEPIC

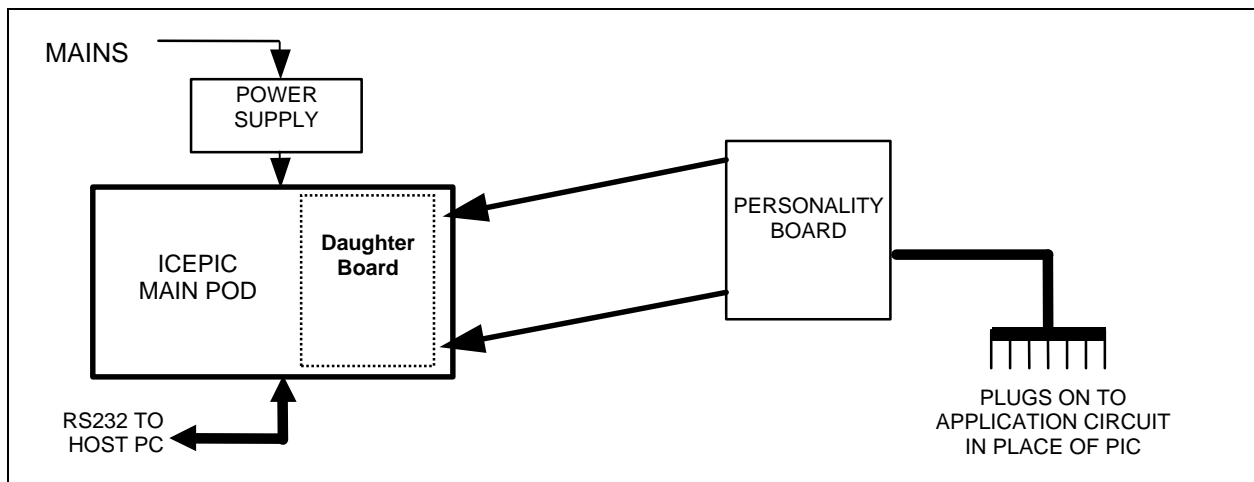


MICROCHIP

TECHNICAL SPECIFICATION		
FEATURES	SPECIFICATION	COMMENTS
Emulation Speed	32KHz to 20Mhz	Real Time Emulation Using 16C01 / 16C03 Emulation Chip
Emulation Memory	16K	Expandable to 16K words of 16CXX memory
IDE	Yes	Integrated Development Environment
Source Level Debug	Yes	MPASM Compatible (Microchip Assembler)
"C" Source Level Debug	Yes	MPC (Bytecraft) & Microchip C-Compiler Support
Real Time Trace	No	Available on ICEPIC2
Freeze Mode	Yes	Peripherals run/stop when halted, software controlled
Break Points	Yes	Effectively unlimited number of Break Points
Stack Breaks	Yes	Limited by Emulator Chip (available on all 16CXX)
WDT Breaks	Yes	Limited by Emulator Chip (available on all 16CXX)
Stack View	Yes	Direct Stack watch window available
Custom WatchPoints	Yes	Multibyte watch points can be set and modified
Assembler Support	MPASM	Microchip Universal Assembler Support
User Interface	MS Windows 3.1	Windows '95; coming soon
Host Interface	RS-232"C"	Communications Speed up to 115Kbps
Power Supply	Supplied	International power supply. (IEC Connector)

Each ICEPIC and ICEPIC2 is supplied as a system with power supply, cables, manual and a copy of Microchip's MPASM assembler.

The emulator system is configured to handle the appropriate PIC microcontroller according to the personality board. For the latest list of available personality boards and the devices covered please see our web site or contact our sales department.



Please contact our sales department for the latest availability on Daughterboards.

**R. F. Solutions Ltd.,
Unit 21, Cliffe Industrial Estate,
South Street,
Lewes,
E Sussex, BN8 6JL. England.**

Tel +44 (0)1273 898 000. Fax +44 (0)1273 480 661.

Email sales@rfsolutions.co.uk

<http://www.rfsolutions.co.uk>

