

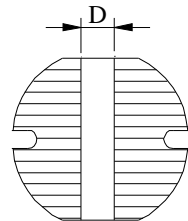
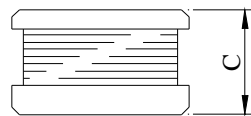
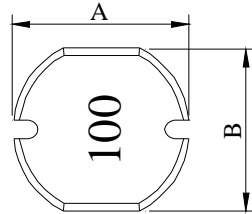
SPECIFICATION FOR APPROVAL

REF :

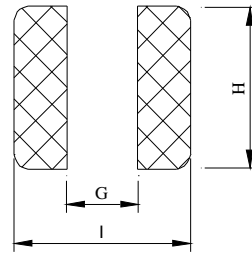
PAGE: 1

PROD. NAME	SMD POWER INDUCTOR	ABC'S DWG NO.	ESR0403□□□□L□-□□□
		ABC'S ITEM NO.	

I . CONFIGURATION & DIMENSIONS :



- A : 4.5±0.3 m/m
- B : 4.0±0.3 m/m
- C : 3.2±0.3 m/m
- D : 1.2 ref. m/m
- G : 1.5 ref. m/m
- H : 4.5 ref. m/m
- I : 5.0 ref. m/m



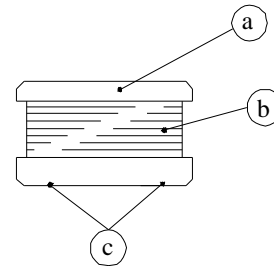
(PCB Pattern)

II . SCHEMATIC DIAGRAM :



III . MATERIALS :

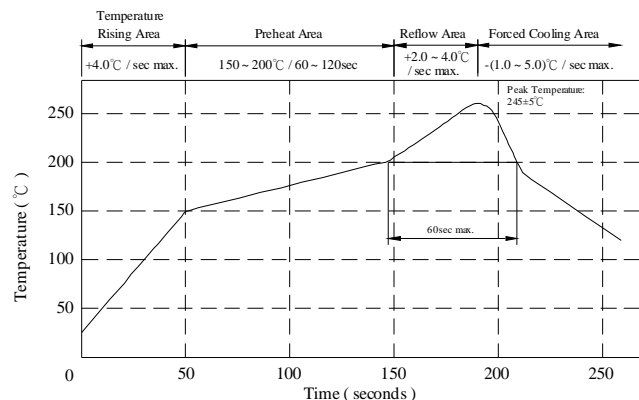
- a . Core : Ferrite DR core
- b . Wire : Enamelled copper wire (Class F & H)
- c . Terminal : Ag/Ni/Sn
- d . Remark : Products comply with RoHS' requirements



Peak Temp : 245±5°C
Max time above 200°C : 60sec max.

IV . GENERAL SPECIFICATION :

- a . Storage temp. : -40°C ----+125°C
- b . Operating temp. : -40°C ----+105°C
- c . Resistance to solder heat : 245±5°C .10 secs.



AR-001A

SPECIFICATION FOR APPROVAL

REF :

PAGE: 2

PROD. NAME	SMD POWER INDUCTOR	ABC'S DWG NO.	ESR0403□□□□L□-□□□
		ABC'S ITEM NO.	

V . ELECTRICAL CHARACTERISTICS :

DWG No.	Inductance (μ H)	RDC ($m\Omega$)		Rated Current (A)	SRF (MHz) ref.
		typ.	max.		
ESR04031R0ML□-□□□	1.0 \pm 20%	19.3	48	2.70	113
ESR04032R2ML□-□□□	2.2 \pm 20%	31.8	71	2.30	76
ESR04033R3ML□-□□□	3.3 \pm 20%	46.9	86	2.00	64
ESR04034R7ML□-□□□	4.7 \pm 20%	64.5	108	1.65	50
ESR04036R8ML□-□□□	6.8 \pm 20%	93.6	126	1.45	41
ESR04038R2ML□-□□□	8.2 \pm 20%	106.0	142	1.40	38
ESR0403100ML□-□□□	10.0 \pm 20%	127.0	172	1.05	36
ESR0403120ML□-□□□	12.0 \pm 20%	146.0	197	1.00	32
ESR0403150ML□-□□□	15.0 \pm 20%	192.0	259	0.85	29
ESR0403180ML□-□□□	18.0 \pm 20%	237.0	309	0.75	28
ESR0403220ML□-□□□	22.0 \pm 20%	270.0	351	0.70	25
ESR0403270ML□-□□□	27.0 \pm 20%	322.0	419	0.65	22
ESR0403330KL□-□□□	33.0 \pm 10%	373.0	485	0.60	20
ESR0403390KL□-□□□	39.0 \pm 10%	449.0	561	0.55	18
ESR0403470KL□-□□□	47.0 \pm 10%	505.0	631	0.50	16
ESR0403560KL□-□□□	56.0 \pm 10%	736.0	920	0.45	15
ESR0403680KL□-□□□	68.0 \pm 10%	822.0	1028	0.40	13

- 1). □ : Packaging information... A: Bulk B: Taping Reel
- 2)."-□□□":Reference code
- 3). Inductance test condition :1MHz/1V
- 4). Rated current: The DC current at which the inductance decreases to 90% of it's initial value or when $\Delta t=40^{\circ}\text{C}$, whichever is lower($T_a=20^{\circ}\text{C}$)

SPECIFICATION FOR APPROVAL

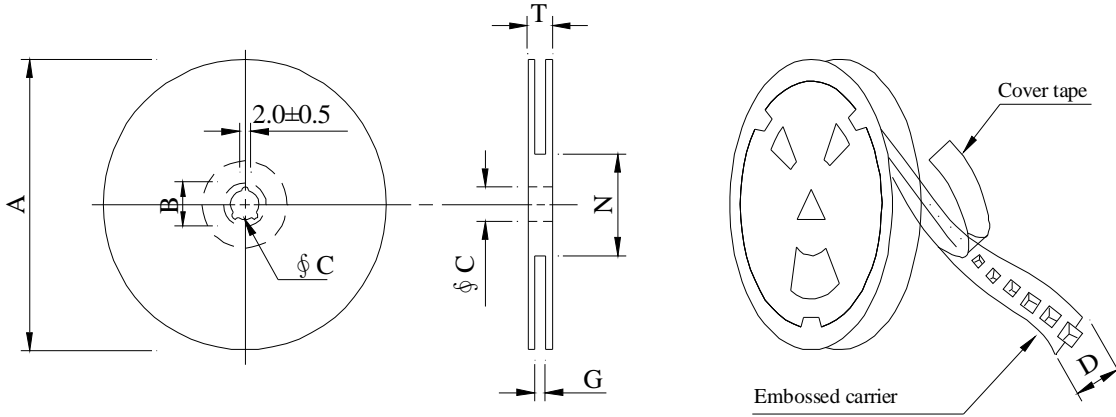
REF :

PAGE: 3

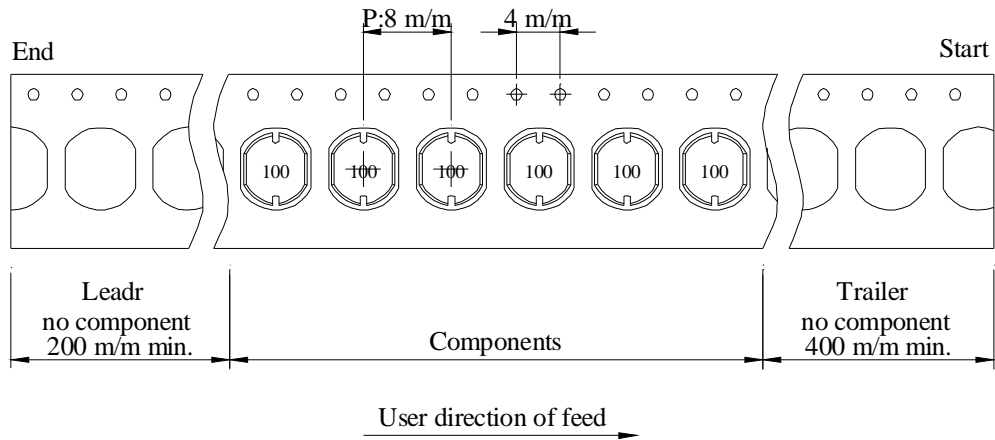
PROD. NAME	SMD POWER INDUCTOR	ABC'S DWG NO.	ESR0403□□□□L□-□□□
		ABC'S ITEM NO.	

VI . PACKAGING INFORMATION :

(1) Configuration



※Carrier tape width : D



(2) Dimensions

Unit:m/m

Style	A	B	C	D	G	N	T
13 - 12	330	21±0.8	13±0.5	12	14 ⁺⁰	50 ⁻⁰	18.4

(3) Q'TY & G.W. Per package

Series	Inner : Reel			Outer : Carton		
	Q'TY (pcs)	G.W. (gw)	Style	Q'TY (pcs)	G.W. (Kg)	Size (cm)
ESR0403	2000	1100	13 - 12	16,000	11.9	40 x 40 x 24

SPECIFICATION FOR APPROVAL

REF :

PAGE: 5

PROD. NAME	SMD POWER INDUCTOR	ABC'S DWG NO.	ESR0403□□□□L□-□□□
		ABC'S ITEM NO.	

VIII . RELIABILITY TEST :

Test item	Specification	Test condition
Solderability	More than 95% of the terminal electrode shall be covered With fresh solder.	Preheat : 155°C / 4 hours. Solder : Sn96.5 / Ag3 / Cu0.5 or equivalent Solder temp. : 235±5°C Flux : Rosin Dip time : 5±0.5 seconds
Thermal shock test (Temp. cycle)	Electrical oharacteristics shall not change more than ±20%	Room temp. → -40 °C 15 minutes → 30 minutes
		Room temp. → +105 °C 15 minutes → 30 minutes
		Total : 50 cycles
Humidity test		Temperature : 40±2°C Humidity : 90±5% Time : 1000 hours
High temp. Resistance test		Temperature : 105±5°C Applied current : Per spec. Time : 96 hours

AR-001A



SPECIFICATION FOR APPROVAL

REF :

PAGE: 6

PROD. NAME	SMD POWER INDUCTOR	ABC'S DWG NO.	ESR0403□□□□L□-□□□
		ABC'S ITEM NO.	

IX . UL CARD :

OBMW2 September 8, 2000

Magnet Wire-Component

JUNG SHING WIRE CO LTD E174837

231 CHUNG CHENG RD, SEC 3 JEN-TEH HSIANG, TAINAN

HSIEN TAIWAN

Mtl Dsg	Mark Dsg	BC	Coat Typ	OC	ANSI Type	Temp Class
AIW	---	Polyamideimide		---	MW81-C	220
CFUEWB	---	Polyurethane		---	MW75C	130
EIAIW	---	Polyesterimide		Polyamideimide	MW35C	200
EILOCKY	---	Polyesterimide		Polyamide	---	180
EILOCKW	---	Polyesterimide		Modified Epoxy	---	200
EIW	---	Polyesterimide		---	---	220
EIW-2	---	Polyesterimide		---	MW74-C	200
FL.EILOCKY	---	Modified Polyester		Polyamide	---	155
LSFFW	---	Polyurethane		---	MW79-C	155
LSUEW	---	Polyurethane		---	---	130
PEW	---	Polyester		---	---	155
PEY	---	Polyester		Nylon	MW24-C	155
SF.FLW	---	Modified Polyester		---	MW26C	155
SF.EIW	---	Polyesterimide		---	MW77C	180
SF.BY@	---	Modified Polyester		Nylon	MW27-C	155
SF.FLY@	---	Modified Polyester		Nylon	MW27-C	155
SF.BLOCKBS	---	Modified Polyester		Modified Polyamide	---	155
SF.EILOCKY#	---	Polyesterimide		Polyamide	---	180
SF.EILOCKBS	---	Polyesterimide		Modified Polyamide	---	180
SF.BW@	---	Modified Polyester		---	MW26C	155
SFFW	---	Polyurethane		---	MW79	155

287806002 Page 1 of 2

A not-for-profit organization
dedicated to public safety and
committed to quality service

Mtl Dsg	Mark Dsg	BC	Coat Typ	OC	ANSI Type	Temp Class
SFFY	---	Polyurethane		Polyamide	MW80C	155
UEW-1	---	Polyurethane		---	MW2-C	105
UEW-2	---	Polyurethane		---	---	130
UEW-4	---	Polyurethane		---	MW75C	130
UEY	---	Polyurethane		Nylon	MW28-C	130
UEY-2	---	Polyurethane		Polyamide	MW28-C	130

@-May be suffixed by LZ; # - May be suffixed by LZ, EL or LZL.
LZ - Signifies magned wires twisted together; EL - signifies base coated magnet wire laid parallel with top coat applied overall; LZL - signi-
fies base coated magnet wire twisted together and covered with top coat overall.

Marking: Company name or trademarks **JSW** or 榮星電線 , material designation or marked designation on packaed or reel, and
Recognized Component Mark.

See General Information Preceding These Recognitions
For use only in equipment where the acceptability of the combination is determined by Underwriters Laboratories Inc.

287806002 Page 2 of 2

OBMW2E174837
September 8 , 2000

SPECIFICATION FOR APPROVAL

REF :

PAGE: 7

PROD. NAME	SMD POWER INDUCTOR	ABC'S DWG NO.	ESR0403□□□□L□-□□□
		ABC'S ITEM NO.	

OBMW2 October 06, 2005
 Magnet Wire-Component

ELEKTRISOLA (MALAYSLA) SDN BHD E143312
 JALAN DAMAI SATU JANDA BAIK 28750 BENTONG, PAHANG
 DARUL MAKMUR MALAYSIA

Mtl Dsg	Mark Dsg	Coating Type		ANSI Typ	Temp Class
		BC	OC		
Estersol 180	E180	Polyesterimide (solderable)	—	MW-77	180
Amldester 200	A200	Polyesterimide	—	MW-74	200
Polysol-N 155	PN155	Polyurechane	Nylon	MW-80, MW-28	155, 130
Polysol 155	P155, G155	Polyurechane	—	MW-79, MW-75	155, 130
Polysol 155g	Pg155	Polyurechane	—	MW-75	130
Polysol 155p	Pp155,Gp155	Polyurechane	—	MW-79	155
Polysol 160	P160	Polyurechane	—	MW-79	155
Polysol 180	P180,G180	Polyurechane	—	MW-82, MW-79	180, 155
Polysol 170	P170 or G170	Polyurechane	—	MW-79	155
Polysol-N 180	PN180	Polyurechane	Nylon	MW-83	180
Polysol P155p	P155p	Polyurechane	—	MW-79	155

Marking : Company name, material designation or marked designation and factory identification on package ok reel

See General Information preceding These Recognitions
 For use only in equipment where the acceptability of the combination is determined by Underwriters Laboratories Inc.

AR-001A

