



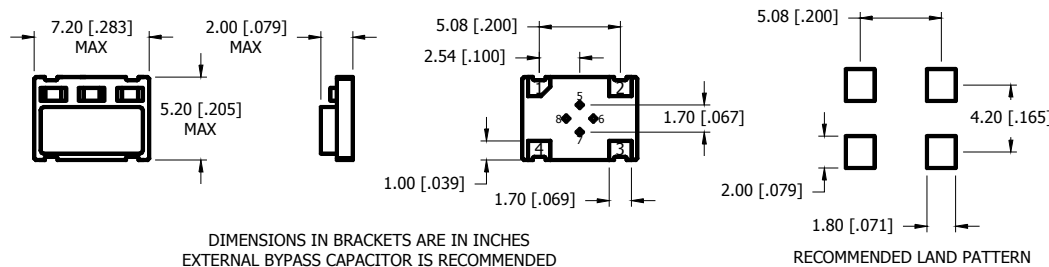
## FREQUENCY STABILITY vs TEMPERATURE TABLE:

Code	Stability	15	20	25	30	35	50
	Temp	±1.5ppm	±2.0ppm	±2.5ppm	±3.0ppm	±3.5ppm	±5.0ppm
A	0°C TO +50°C	●	●	●	●	●	●
G	0°C TO +70°C	□	●	●	●	●	●
C	-20°C TO +70°C	□	□	●	●	●	●
D	-30°C TO +70°C	□	□	●	●	●	●
E	-30°C TO +80°C	□	□	●	●	●	●
F	-40°C TO +85°C	□	□	□	●	●	●

● = Available

□ = Consult with the Manufacturer

## MECHANICAL DIMENSIONS:



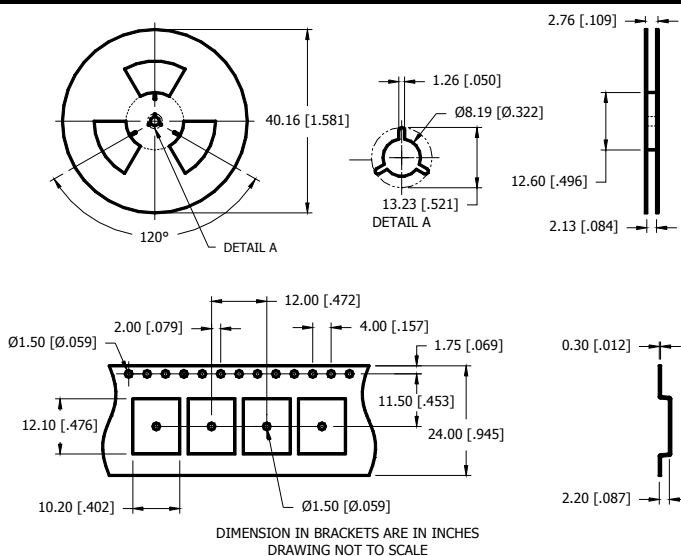
PIN 1	TRI-STATE OR N/C
PIN 2	GROUND
PIN 3	OUTPUT
PIN 4	SUPPLY VOLTAGE
PIN 5-8	FACTORY TEST TERMINALS (DO NOT USE)

## ENVIRONMENT / MECHANICAL:

Shock	MIL-STD-883, Method 2002, Condition B
Solderability	MIL-STD-883, Method 2003
Vibration	MIL-STD-883, Method 2007, Condition A

## TAPE and DIMENSIONS:

## MARKING:



Line 1 = MXXXXX

M = MMD COMPONENTS

XXXXX = Frequency in MHZ

Line 2 = SYMML

S = Internal Code

YYMM = 4 Digit Date Code (Year / Month)

L = Denotes RoHS Compliant

Line 3 = XXXXX

Internal use only

May vary with lots

MMD Components, 30400 Esperanza, Rancho Santa Margarita, CA, 92688

Phone: (949) 709-5075, Fax: (949) 709-3536, [www.mmdcomp.com](http://www.mmdcomp.com)

Sales@mmdcomp.com