

Aluminum Capacitors + 105 °C, Tubular Radial Lead

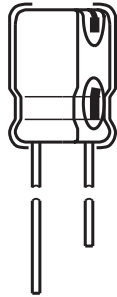


Fig.1 Component outline

FEATURES

- Wide temperature range
- Radial design in two and three lead configuration
- Ideal SMPS output filter

| QUICK REFERENCE DATA | |
|--|--|
| DESCRIPTION | VALUE |
| Nominal case size Ø D x L in mm | 0.75" x 1.125" [1.905 x 28.575] to 1.0" x 3.625" [25.4 x 92.075] |
| Operating temperature | - 55 °C to + 105 °C |
| Rated capacitance range, C _R | 22 µF to 27 000 µF |
| Tolerance on C _R | - 10 %, + 50 % |
| Rated voltage range, U _R | 6.3 WVDC to 250 WVDC |
| Termination | radial leads |
| Life validation test at + 105 °C | 2000 h: ΔCAP ≤ 15 % from initial measurement ΔESR ≤ 1.5 x initial specified limit ΔDCL ≤ initial specified limit |
| Shelf life at + 105 °C | 500 h: ΔCAP ≤ 10 % from initial measurement ΔESR ≤ 1.15 x initial specified limit ΔDCL ≤ 2 x initial specified limit |
| DC leakage current at + 25 °C | $I = K \sqrt{CV}$ K = 0.5 I in µA, C in µF, V in volts |

| RIPPLE CURRENT MULTIPLIERS | | | | | |
|----------------------------|----------|------------|-------------|------|--------|
| TEMPERATURE | | | | | |
| Ambient Temperature | | | Multipliers | | |
| + 105 °C | | | 0.4 | | |
| + 85 °C | | | 1.0 | | |
| + 65 °C | | | 1.4 | | |
| + 45 °C | | | 1.7 | | |
| + 25 °C | | | 2.0 | | |
| FREQUENCY (Hz) | | | | | |
| Rated WVDC | 50 to 60 | 100 to 120 | 300 to 400 | 1000 | 20 000 |
| 0 to 60 | 0.60 | 0.75 | 0.80 | 0.90 | 1.0 |
| 61 to 250 | 0.43 | 0.54 | 0.75 | 0.85 | 1.0 |

| LOW TEMPERATURE PERFORMANCE | | | |
|---|--------------|---------------|--------------|
| CAPACITANCE RATIO C - 55 °C / C + 25 °C MINIMUM AT 120 Hz | | | |
| Rated Voltage (WVDC) | 6.3 to 25 | 40 to 100 | 150 to 250 |
| Capacitance Remaining | 75 % | 80 % | 65 % |
| ESR RATIO ESR - 55 °C / ESR + 25 °C MAXIMUM AT 120 Hz | | | |
| Rated Voltage (WVDC) | 0 to 12 | 13 to 40 | 41 to 250 |
| Multipliers | 8 | 10 | 16 |
| ESL (TYPICAL VALUES AT 1 MHz TO 10 MHz) | | | |
| Nominal Diameter | 0.75 [19.0.] | 0.875 [22.0.] | 1.00 [25.0.] |
| Typical ESL (nH) | 10 | 11 | 13 |

| DIMENSIONS in inches [millimeters] | | | | | |
|------------------------------------|--------------------|--------------------|-------------------------------|---|---------------------------|
| CASE CODE | STYLE 1 STYLE 7 | | OVERALL LENGTH H (MAX.) | LEAD SPACING ⁽¹⁾ S ± 0.015 [0.4] | TYPICAL WEIGHT oz. (g) |
| | D ± 0.015 [0.4] | L ± 0.062 [1.6] | | | |
| GE | 0.770 [19.6] | 1.150 [29.2] | 1.246 [31.6] | 0.250 [6.4] | 0.46 (13) |
| GJ | 0.770 [19.6] | 1.650 [41.9] | 1.746 [44.3] | 0.250 [6.4] | 0.67 (19) |
| GL | 0.770 [19.6] | 2.150 [54.6] | 2.246 [57.0] | 0.250 [6.4] | 0.74 (21) |
| GP | 0.770 [19.6] | 2.650 [67.3] | 2.746 [69.7] | 0.250 [6.4] | 0.88 (25) |
| GS | 0.770 [19.6] | 3.150 [80.0] | 3.246 [82.4] | 0.250 [6.4] | 1.16 (33) |
| GT | 0.770 [19.6] | 3.650 [92.7] | 3.746 [95.1] | 0.250 [6.4] | 1.34 (38) |
| HE | 0.895 [22.7] | 1.150 [29.2] | 1.246 [31.6] | 0.300 [7.6] | 0.63 (18) |
| HJ | 0.895 [22.7] | 1.650 [41.9] | 1.746 [44.3] | 0.300 [7.6] | 0.95 (27) |
| HL | 0.895 [22.7] | 2.150 [54.6] | 2.246 [57.0] | 0.300 [7.6] | 1.02 (29) |
| HP | 0.895 [22.7] | 2.650 [67.3] | 2.746 [69.7] | 0.300 [7.6] | 1.37 (39) |

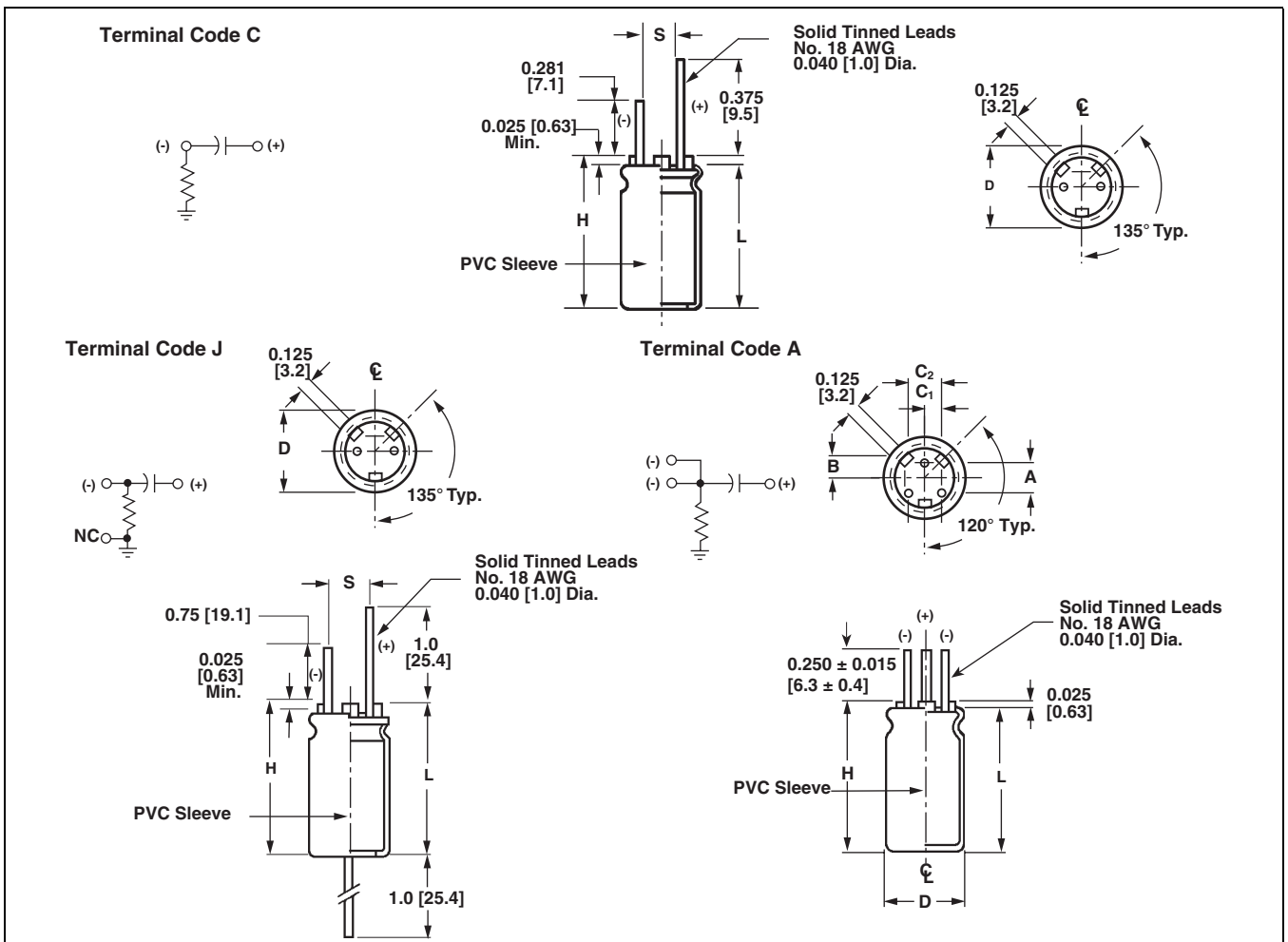


| DIMENSIONS in inches [millimeters] | | | | | |
|---|--------------------|--------------------|---------------------------------|---|---------------------------|
| CASE CODE | STYLE 1 STYLE 7 | | OVERALL LENGTH H (MAX.) | LEAD SPACING ⁽¹⁾ S ± 0.015 [0.4] | TYPICAL WEIGHT oz. (g) |
| | D ± 0.015 [0.4] | L ± 0.062 [1.6] | | | |
| HS | 0.895 [22.7] | 3.150 [80.0] | 3.246 [82.4] | 0.300 [7.6] | 1.73 (49) |
| HT | 0.895 [22.7] | 3.650 [92.7] | 3.746 [95.1] | 0.300 [7.6] | 2.08 (59) |
| JE | 1.020 [25.9] | 1.150 [29.2] | 1.246 [31.6] | 0.400 [10.2] | 0.81 (23) |
| JJ | 1.020 [25.9] | 1.650 [41.9] | 1.746 [44.3] | 0.400 [10.2] | 1.02 (29) |
| JL | 1.020 [25.9] | 2.150 [54.6] | 2.246 [57.0] | 0.400 [10.2] | 1.20 (34) |
| JP | 1.020 [25.9] | 2.650 [67.3] | 2.746 [69.7] | 0.400 [10.2] | 1.87 (53) |
| JS | 1.020 [25.9] | 3.150 [80.0] | 3.246 [82.4] | 0.400 [10.2] | 2.22 (63) |
| JT | 1.020 [25.9] | 3.650 [92.7] | 3.746 [95.1] | 0.400 [10.2] | 2.54 (72) |
| LEAD SPACING | | | | | |
| CASE DIAMETER | A ± 0.015 [0.4] | B ± 0.015 [0.4] | C ₁ ± 0.015 [0.4] | C ₂ ± 0.015 [0.4] | |
| 0.750 [19.1] | 0.300 [7.6] | 0.167 [4.23] | 0.100 [2.5] | 0.200 [5.1] | |
| 0.875 [22.2] | 0.400 [10.2] | 0.228 [5.79] | 0.150 [3.8] | 0.300 [7.6] | |
| 1.000 [25.4] | 0.400 [10.2] | 0.228 [5.79] | 0.150 [3.8] | 0.300 [7.6] | |

Note

(1) Type U673D only

DIMENSIONS in inches [millimeters] **AND AVAILABLE FORMS**



U673D and U674D

Vishay Sprague

Aluminum Capacitors
+ 105 °C, Tubular Radial Lead



ORDERING EXAMPLE

Electrolytic capacitor U673D and U674D series: U673D 228 F 6R3 GE 1 C

| DESCRIPTION | |
|-------------|---|
| CODE | EXPLANATION |
| U673D | product type |
| 228 | capacitance value (2200 μ F) |
| F | capacitance tolerance (F = - 10 %, + 50 %; H = - 10 %, + 100 %) |
| 6R3 | voltage rating at 105 °C (6R3 = 6.3 V) |
| GE | can size (see dimensions table) |
| 1 | sleeve and sealing (1 = p.v.c. sleeve) |
| C | terminal code (see available forms tables) |

| STANDARD RATINGS in inches [millimeters] | | | | | | |
|--|------------------|-----------------------------|--------------------------------------|------------------|---|---------------------------------------|
| CAPACITANCE (μ F) | PART NUMBER | NOMINAL CASE SIZE D x L | MAX. ESR AT + 25 °C ($m\Omega$) | | MAX. RIPPLE AT + 85 °C (A) 20 kHz to 40 kHz | MAX. Z AT 100 kHz ($m\Omega$) |
| | | | 120 Hz | 20 kHz to 40 kHz | | |
| 6.3 WVDC AT 105 °C, SURGE = 9 V | | | | | | |
| 2200.0 | U673D228F6R3GE1C | 0.770 x 1.150 [19.6 x 29.2] | 105.0 | 81.0 | 2.30 | 83.0 |
| 4700.0 | U673D478F6R3GJ1C | 0.770 x 1.650 [19.6 x 41.9] | 53.0 | 41.0 | 3.70 | 43.0 |
| 6800.0 | U673D688F6R3GL1C | 0.770 x 2.150 [19.6 x 54.6] | 36.0 | 28.0 | 4.95 | 30.0 |
| 8200.0 | U673D828F6R3GP1C | 0.770 x 2.650 [19.6 x 67.3] | 28.0 | 22.7 | 6.11 | 25.0 |
| 10 000.0 | U673D109F6R3GS1C | 0.770 x 3.150 [19.6 x 80.0] | 23.0 | 19.0 | 7.20 | 21.0 |
| 12 000.0 | U673D129F6R3GT1C | 0.770 x 3.650 [19.6 x 92.7] | 21.0 | 17.0 | 8.14 | 19.0 |
| 3300.0 | U673D338F6R3HE1C | 0.895 x 1.150 [22.7 x 29.2] | 74.0 | 58.0 | 3.00 | 60.0 |
| 6800.0 | U673D688F6R3HJ1C | 0.895 x 1.650 [22.7 x 41.9] | 38.0 | 39.0 | 4.73 | 41.0 |
| 10 000.0 | U673D109F6R3HL1C | 0.895 x 2.150 [22.7 x 54.6] | 27.0 | 22.0 | 6.20 | 24.0 |
| 15 000.0 | U673D159F6R3HP1C | 0.895 x 2.650 [22.7 x 67.3] | 21.0 | 17.4 | 7.62 | 19.0 |
| 18 000.0 | U673D189F6R3HS1C | 0.895 x 3.150 [22.7 x 80.0] | 18.0 | 15.0 | 8.83 | 17.0 |
| 22 000.0 | U673D229F6R3HT1C | 0.895 x 3.650 [22.7 x 92.7] | 15.8 | 13.3 | 10.10 | 15.0 |
| 4700.0 | U673D478F6R3JE1C | 1.020 x 1.150 [25.9 x 29.2] | 60.0 | 48.0 | 3.60 | 50.0 |
| 10 000.0 | U673D109F6R3JJ1C | 1.020 x 1.650 [25.9 x 41.9] | 32.0 | 26.0 | 5.54 | 28.0 |
| 15 000.0 | U673D159F6R3JL1C | 1.020 x 2.150 [25.9 x 54.6] | 22.6 | 18.8 | 7.30 | 21.0 |
| 18 000.0 | U673D189F6R3JP1C | 1.020 x 2.650 [25.9 x 67.3] | 18.0 | 15.2 | 8.81 | 17.0 |
| 22 000.0 | U673D229F6R3JS1C | 1.020 x 3.150 [25.9 x 80.0] | 15.4 | 13.0 | 10.20 | 14.0 |
| 27 000.0 | U673D279F6R3JT1C | 1.020 x 3.650 [25.9 x 92.7] | 13.4 | 11.5 | 11.60 | 13.0 |
| 7.5 WVDC AT 105 °C, SURGE = 10 V | | | | | | |
| 1800.0 | U673D188F7R5GE1C | 0.770 x 1.150 [19.6 x 29.2] | 110.0 | 82.0 | 2.30 | 84.0 |
| 3900.0 | U673D398F7R5GJ1C | 0.770 x 1.650 [19.6 x 41.9] | 55.0 | 41.0 | 3.70 | 52.0 |
| 5600.0 | U673D568F7R5GL1C | 0.770 x 2.150 [19.6 x 54.6] | 38.0 | 29.0 | 4.93 | 31.0 |
| 8200.0 | U673D828F7R5GP1C | 0.770 x 2.650 [19.6 x 67.3] | 29.5 | 22.8 | 6.10 | 25.0 |
| 10 000.0 | U673D109F7R5GS1C | 0.770 x 3.150 [19.6 x 80.0] | 25.8 | 20.0 | 7.04 | 22.0 |
| 12 000.0 | U673D129F7R5GT1C | 0.770 x 3.650 [19.6 x 92.7] | 22.0 | 17.4 | 8.06 | 19.0 |
| 3300.0 | U673D338F7R5HE1C | 0.895 x 1.150 [22.7 x 29.2] | 76.0 | 58.4 | 2.97 | 61.0 |
| 5600.0 | U673D568F7R5HJ1C | 0.895 x 1.650 [22.7 x 41.9] | 39.5 | 30.6 | 4.72 | 33.0 |
| 8200.0 | U673D828F7R5HL1C | 0.895 x 2.150 [22.7 x 54.6] | 27.7 | 21.8 | 6.23 | 24.0 |
| 12 000.0 | U673D129F7R5HP1C | 0.895 x 2.650 [22.7 x 67.3] | 22.0 | 17.6 | 7.58 | 20.0 |
| 15 000.0 | U673D159F7R5HS1C | 0.895 x 3.150 [22.7 x 80.0] | 18.7 | 15.0 | 8.82 | 17.0 |
| 18 000.0 | U673D189F7R5HT1C | 0.895 x 3.650 [22.7 x 92.7] | 16.4 | 13.5 | 9.97 | 15.0 |
| 3900.0 | U673D398F7R5JE1C | 1.020 x 1.150 [25.9 x 29.2] | 62.0 | 48.0 | 3.55 | 50.0 |
| 8200.0 | U673D828F7R5JJ1C | 1.020 x 1.650 [25.9 x 41.9] | 32.0 | 25.9 | 5.56 | 28.0 |
| 12 000.0 | U673D129F7R5JL1C | 1.020 x 2.150 [25.9 x 54.6] | 23.5 | 19.0 | 7.22 | 21.0 |
| 18 000.0 | U673D189F7R5JP1C | 1.020 x 2.650 [25.9 x 67.3] | 18.3 | 15.0 | 8.83 | 17.0 |
| 22 000.0 | U673D229F7R5JS1C | 1.020 x 3.150 [25.9 x 80.0] | 15.8 | 13.0 | 10.20 | 15.0 |
| 27 000.0 | U673D279F7R5JT1C | 1.020 x 3.650 [25.9 x 92.7] | 13.8 | 11.6 | 11.60 | 13.0 |



U673D and U674D

Aluminum Capacitors
+ 105 °C, Tubular Radial Lead

Vishay Sprague

| STANDARD RATINGS in inches [millimeters] | | | | | | |
|--|------------------|-----------------------------|--------------------------------------|------------------|---|---------------------------------------|
| CAPACITANCE (μ F) | PART NUMBER | NOMINAL CASE SIZE D x L | MAX. ESR AT + 25 °C ($m\Omega$) | | MAX. RIPPLE AT + 85 °C (A) 20 kHz to 40 kHz | MAX. Z AT 100 kHz ($m\Omega$) |
| | | | 120 Hz | 20 kHz to 40 kHz | | |
| 10 WVDC AT + 105 °C, SURGE = 12 V | | | | | | |
| 1800.0 | U673D188F010GE1C | 0.770 x 1.150 [19.6 x 29.2] | 123.0 | 89.0 | 2.20 | 91.0 |
| 3300.0 | U673D338F010GJ1C | 0.770 x 1.650 [19.6 x 41.9] | 60.0 | 44.0 | 3.56 | 46.0 |
| 5600.0 | U673D568F010GL1C | 0.770 x 2.150 [19.6 x 54.6] | 41.0 | 30.0 | 4.79 | 32.0 |
| 6800.0 | U673D688F010GP1C | 0.770 x 2.650 [19.6 x 67.3] | 31.0 | 24.0 | 5.93 | 26.0 |
| 8200.0 | U673D828F010GS1C | 0.770 x 3.150 [19.6 x 80.0] | 26.0 | 20.0 | 7.02 | 22.0 |
| 10 000.0 | U673D109F010GT1C | 0.770 x 3.650 [19.6 x 92.7] | 23.0 | 17.8 | 7.97 | 20.0 |
| 2700.0 | U673D278F010HE1C | 0.895 x 1.150 [22.7 x 29.2] | 82.0 | 61.0 | 2.90 | 62.0 |
| 5600.0 | U673D568F010HJ1C | 0.895 x 1.650 [22.7 x 41.9] | 42.0 | 32.0 | 4.61 | 34.0 |
| 8200.0 | U673D828F010HL1C | 0.895 x 2.150 [22.7 x 54.6] | 29.6 | 22.0 | 6.11 | 24.0 |
| 10 000.0 | U673D109F010HP1C | 0.895 x 2.650 [22.7 x 67.3] | 24.0 | 18.0 | 7.33 | 20.0 |
| 12 000.0 | U673D129F010HS1C | 0.895 x 3.150 [22.7 x 80.0] | 19.9 | 15.8 | 8.63 | 17.0 |
| 15 000.0 | U673D159F010HT1C | 0.895 x 3.650 [22.7 x 92.7] | 17.3 | 13.8 | 9.85 | 16.0 |
| 3900.0 | U673D398F010JE1C | 1.020 x 1.150 [25.9 x 29.2] | 66.6 | 50.0 | 3.47 | 52.0 |
| 6800.0 | U673D688F010JJ1C | 1.020 x 1.650 [25.9 x 41.9] | 34.0 | 26.7 | 5.48 | 29.0 |
| 12 000.0 | U673D129F010JL1C | 1.020 x 2.150 [25.9 x 54.6] | 24.0 | 19.0 | 7.18 | 21.0 |
| 15 000.0 | U673D159F010JP1C | 1.020 x 2.650 [25.9 x 67.3] | 19.2 | 15.0 | 8.72 | 17.0 |
| 18 000.0 | U673D189F010JS1C | 1.020 x 3.150 [25.9 x 80.0] | 16.0 | 13.0 | 10.20 | 15.0 |
| 22 000.0 | U673D229F010JT1C | 1.020 x 3.650 [25.9 x 92.7] | 14.3 | 11.8 | 11.50 | 14.0 |
| 12 WVDC AT + 105 °C, SURGE = 16 V | | | | | | |
| 1500.0 | U673D158F012GE1C | 0.770 x 1.150 [19.6 x 29.2] | 119.0 | 83.0 | 2.26 | 85.0 |
| 3300.0 | U673D338F012GJ1C | 0.770 x 1.650 [19.6 x 41.9] | 60.0 | 42.0 | 3.65 | 44.0 |
| 4700.0 | U673D478F012GL1C | 0.770 x 2.150 [19.6 x 54.6] | 41.0 | 29.0 | 4.88 | 31.0 |
| 6800.0 | U673D688F012GP1C | 0.770 x 2.650 [19.6 x 67.3] | 31.0 | 23.0 | 6.07 | 26.0 |
| 8200.0 | U673D828F012GS1C | 0.770 x 3.150 [19.6 x 80.0] | 26.0 | 19.4 | 7.14 | 22.0 |
| 10 000.0 | U673D109F012GT1C | 0.770 x 3.650 [19.6 x 92.7] | 23.0 | 17.0 | 8.11 | 20.0 |
| 2200.0 | U673D228F012HE1C | 0.895 x 1.150 [22.7 x 29.2] | 83.0 | 60.0 | 2.93 | 62.0 |
| 4700.0 | U673D478F012HJ1C | 0.895 x 1.650 [22.7 x 41.9] | 42.0 | 31.0 | 4.69 | 33.0 |
| 6800.0 | U673D688F012HL1C | 0.895 x 2.150 [22.7 x 54.6] | 29.0 | 22.0 | 6.20 | 25.0 |
| 10000.0 | U673D109F012HP1C | 0.895 x 2.650 [22.7 x 67.3] | 24.0 | 18.3 | 7.43 | 21.0 |
| 12 000.0 | U673D129F012HS1C | 0.895 x 3.150 [22.7 x 80.0] | 19.7 | 15.0 | 8.82 | 18.0 |
| 15 000.0 | U673D159F012HT1C | 0.895 x 3.650 [22.7 x 92.7] | 17.0 | 13.3 | 10.10 | 16.0 |
| 3300.0 | U673D338F012JE1C | 1.020 x 1.150 [25.9 x 29.2] | 66.0 | 49.0 | 3.53 | 52.0 |
| 6800.0 | U673D688F012JJ1C | 1.020 x 1.650 [25.9 x 41.9] | 34.0 | 26.0 | 5.54 | 29.0 |
| 10 000.0 | U673D109F012JL1C | 1.020 x 2.150 [25.9 x 54.6] | 25.5 | 19.0 | 7.12 | 22.0 |
| 12 000.0 | U673D129F012JP1C | 1.020 x 2.650 [25.9 x 67.3] | 19.7 | 15.0 | 8.75 | 18.0 |
| 18 000.0 | U673D189F012JS1C | 1.020 x 3.150 [25.9 x 80.0] | 16.4 | 13.0 | 10.20 | 16.0 |
| 22 000.0 | U673D229F012JT1C | 1.020 x 3.650 [25.9 x 92.7] | 14.6 | 11.8 | 11.50 | 15.0 |
| 16 WVDC AT 105°C, SURGE = 20 V | | | | | | |
| 1200.0 | U673D128F016GE1C | 0.770 x 1.150 [19.6 x 29.2] | 129.0 | 83.0 | 2.24 | 85.0 |
| 2700.0 | U673D278F016GJ1C | 0.770 x 1.650 [19.6 x 41.9] | 65.0 | 43.0 | 3.62 | 45.0 |
| 3900.0 | U673D398F016GL1C | 0.770 x 2.150 [19.6 x 54.6] | 44.0 | 30.0 | 4.84 | 32.0 |
| 5600.0 | U673D568F016GP1C | 0.770 x 2.650 [19.6 x 67.3] | 34.0 | 23.5 | 6.01 | 26.0 |
| 6800.0 | U673D688F016GS1C | 0.770 x 3.150 [19.6 x 80.0] | 28.0 | 19.7 | 7.09 | 23.0 |
| 8200.0 | U673D828F016GT1C | 0.770 x 3.650 [19.6 x 92.7] | 24.0 | 17.0 | 8.16 | 21.0 |
| 2200.0 | U673D228F016HE1C | 0.895 x 1.150 [22.7 x 29.2] | 89.0 | 59.0 | 2.93 | 61.0 |
| 3900.0 | U673D398F016HJ1C | 0.895 x 1.650 [22.7 x 41.9] | 45.0 | 31.6 | 4.64 | 34.0 |
| 5600.0 | U673D568F016HL1C | 0.895 x 2.150 [22.7 x 54.6] | 31.6 | 22.4 | 6.14 | 25.0 |

U673D and U674D

Vishay Sprague

Aluminum Capacitors
+ 105 °C, Tubular Radial Lead



| STANDARD RATINGS in inches [millimeters] | | | | | | |
|---|------------------|-----------------------------|--------------------------------------|------------------|---|---------------------------------------|
| CAPACITANCE (μ F) | PART NUMBER | NOMINAL CASE SIZE D x L | MAX. ESR AT + 25 °C ($m\Omega$) | | MAX. RIPPLE AT + 85 °C (A) 20 kHz to 40 kHz | MAX. Z AT 100 kHz ($m\Omega$) |
| | | | 120 Hz | 20 kHz to 40 kHz | | |
| 16 WVDC AT 105 °C, SURGE = 20 V | | | | | | |
| 8200.0 | U673D828F016HP1C | 0.895 x 2.650 [22.7 x 67.3] | 24.7 | 17.9 | 7.51 | 20.0 |
| 10 000.0 | U673D109F016HS1C | 0.895 x 3.150 [22.7 x 80.0] | 20.7 | 15.2 | 8.79 | 18.0 |
| 12 000.0 | U673D129F016HT1C | 0.895 x 3.650 [22.7 x 92.7] | 18.0 | 13.6 | 9.93 | 17.0 |
| 2700.0 | U673D278F016JE1C | 1.020 x 1.150 [25.9 x 29.2] | 71.0 | 50.0 | 3.49 | 52.0 |
| 5600.0 | U673D568F016JJ1C | 1.020 x 1.650 [25.9 x 41.9] | 36.7 | 26.7 | 5.48 | 29.0 |
| 8200.0 | U673D828F016JL1C | 1.020 x 2.150 [25.9 x 54.6] | 26.0 | 19.2 | 7.18 | 22.0 |
| 12 000.0 | U673D129F016JP1C | 1.020 x 2.650 [25.9 x 67.3] | 20.5 | 15.4 | 8.75 | 19.0 |
| 15 000.0 | U673D159F016JS1C | 1.020 x 3.150 [25.9 x 80.0] | 17.4 | 13.3 | 10.20 | 17.0 |
| 18 000.0 | U673D189F016JT1C | 1.020 x 3.650 [25.9 x 92.7] | 15.3 | 11.8 | 11.50 | 17.0 |
| 20 WVDC AT + 105 °C, SURGE = 30 V | | | | | | |
| 1000.0 | U673D108F020GE1C | 0.770 x 1.150 [19.6 x 29.2] | 140.0 | 84.0 | 2.16 | 87.0 |
| 1800.0 | U673D188F020GJ1C | 0.770 x 1.650 [19.6 x 41.9] | 67.0 | 44.0 | 3.56 | 47.0 |
| 2700.0 | U673D278F020GL1C | 0.770 x 2.150 [19.6 x 54.6] | 45.0 | 30.0 | 4.81 | 33.0 |
| 3900.0 | U673D398F020GP1C | 0.770 x 2.650 [19.6 x 67.3] | 34.9 | 23.9 | 6.96 | 27.0 |
| 4700.0 | U673D478F020GS1C | 0.770 x 3.150 [19.6 x 80.0] | 28.7 | 19.9 | 7.05 | 24.0 |
| 5600.0 | U673D568F020GT1C | 0.770 x 3.650 [19.6 x 92.7] | 24.6 | 17.0 | 8.09 | 21.0 |
| 1500.0 | U673D158F020HE1C | 0.895 x 1.150 [22.7 x 29.2] | 94.0 | 59.0 | 2.86 | 62.0 |
| 3300.0 | U673D338F020HJ1C | 0.895 x 1.650 [22.7 x 41.9] | 46.9 | 32.0 | 4.60 | 35.0 |
| 4700.0 | U673D478F020HL1C | 0.895 x 2.150 [22.7 x 54.6] | 32.0 | 22.7 | 6.10 | 26.0 |
| 6800.0 | U673D688F020HP1C | 0.895 x 2.650 [22.7 x 67.3] | 25.0 | 18.0 | 7.49 | 21.0 |
| 8200.0 | U673D828F020HS1C | 0.895 x 3.150 [22.7 x 80.0] | 21.0 | 15.3 | 8.77 | 19.0 |
| 10 000.0 | U673D109F020HT1C | 0.895 x 3.650 [22.7 x 92.7] | 18.0 | 13.6 | 9.93 | 18.0 |
| 2200.0 | U673D228F020JE1C | 1.020 x 1.150 [25.9 x 29.2] | 72.0 | 49.0 | 3.48 | 52.0 |
| 4700.0 | U673D478F020JJ1C | 1.020 x 1.650 [25.9 x 41.9] | 37.0 | 26.0 | 5.47 | 29.0 |
| 6800.0 | U673D688F020JL1C | 1.020 x 2.150 [25.9 x 54.6] | 26.0 | 19.3 | 7.16 | 23.0 |
| 8200.0 | U673D828F020JP1C | 1.020 x 2.650 [25.9 x 67.3] | 20.7 | 15.5 | 8.72 | 19.0 |
| 10 000.0 | U673D109F020JS1C | 1.020 x 3.150 [25.9 x 80.0] | 17.9 | 13.6 | 10.10 | 18.0 |
| 12 000.0 | U673D129F020JT1C | 1.020 x 3.650 [25.9 x 92.7] | 15.8 | 12.0 | 11.40 | 16.0 |
| 25 WVDC AT + 105 °C, SURGE = 35 V | | | | | | |
| 820.0 | U673D827F025GE1C | 0.770 x 1.150 [19.6 x 29.2] | 143.0 | 85.0 | 2.23 | 88.0 |
| 1500.0 | U673D158F025GJ1C | 0.770 x 1.650 [19.6 x 41.9] | 73.0 | 44.0 | 3.56 | 47.0 |
| 2200.0 | U673D228F025GL1C | 0.770 x 2.150 [19.6 x 54.6] | 49.0 | 30.5 | 4.82 | 33.0 |
| 3300.0 | U673D338F025GP1C | 0.770 x 2.650 [19.6 x 67.3] | 37.0 | 23.9 | 5.96 | 27.0 |
| 3900.0 | U673D398F025GS1C | 0.770 x 3.150 [19.6 x 80.0] | 31.0 | 20.0 | 7.00 | 23.0 |
| 4700.0 | U673D478F025GT1C | 0.770 x 3.650 [19.6 x 92.7] | 26.7 | 17.5 | 8.04 | 21.0 |
| 1200.0 | U673D128F025HE1C | 0.895 x 1.150 [22.7 x 29.2] | 101.0 | 62.9 | 2.86 | 66.0 |
| 2700.0 | U673D278F025HJ1C | 0.895 x 1.650 [22.7 x 41.9] | 50.0 | 32.0 | 4.61 | 35.0 |
| 3900.0 | U673D398F025HL1C | 0.895 x 2.150 [22.7 x 54.6] | 35.0 | 22.9 | 6.08 | 26.0 |
| 4700.0 | U673D478F025HP1C | 0.895 x 2.650 [22.7 x 67.3] | 27.0 | 18.0 | 7.47 | 21.0 |
| 6800.0 | U673D688F025HS1C | 0.895 x 3.150 [22.7 x 80.0] | 22.7 | 15.4 | 8.74 | 19.0 |
| 8200.0 | U673D828F025HT1C | 0.895 x 3.650 [22.7 x 92.7] | 19.6 | 13.6 | 9.93 | 17.0 |
| 1800.0 | U673D188F025JE1C | 1.020 x 1.150 [25.9 x 29.2] | 79.0 | 51.0 | 3.45 | 53.0 |
| 3900.0 | U673D398F025JJ1C | 1.020 x 1.650 [25.9 x 41.9] | 40.0 | 26.9 | 5.46 | 30.0 |
| 5600.0 | U673D568F025JL1C | 1.020 x 2.150 [25.9 x 54.6] | 28.0 | 19.0 | 7.14 | 22.0 |
| 6800.0 | U673D688F025JP1C | 1.020 x 2.650 [25.9 x 67.3] | 22.0 | 15.7 | 8.66 | 19.0 |
| 8200.0 | U673D828F025JS1C | 1.020 x 3.150 [25.9 x 80.0] | 18.7 | 13.5 | 10.10 | 17.0 |
| 10 000.0 | U673D109F025JT1C | 1.020 x 3.650 [25.9 x 92.7] | 16.4 | 12.0 | 11.40 | 15.0 |



| STANDARD RATINGS in inches [millimeters] | | | | | | |
|---|------------------|-----------------------------|--------------------------------------|------------------|---|---------------------------------------|
| CAPACITANCE (μ F) | PART NUMBER | NOMINAL CASE SIZE D x L | MAX. ESR AT + 25 °C ($m\Omega$) | | MAX. RIPPLE AT + 85 °C (A) 20 kHz to 40 kHz | MAX. Z AT 100 kHz ($m\Omega$) |
| | | | 120 Hz | 20 kHz to 40 kHz | | |
| 30 WVDC AT + 105 °C, SURGE = 40 V | | | | | | |
| 820.0 | U673D827F030GE1C | 0.770 x 1.150 [19.6 x 29.2] | 156.0 | 86.0 | 2.16 | 89.0 |
| 1500.0 | U673D158F030GJ1C | 0.770 x 1.650 [19.6 x 41.9] | 80.0 | 47.0 | 3.45 | 50.0 |
| 2200.0 | U673D228F030GL1C | 0.770 x 2.150 [19.6 x 54.6] | 53.0 | 32.0 | 4.68 | 35.0 |
| 3300.0 | U673D338F030GP1C | 0.770 x 2.650 [19.6 x 67.3] | 40.0 | 25.0 | 5.81 | 28.0 |
| 3900.0 | U673D398F030GS1C | 0.770 x 3.150 [19.6 x 80.0] | 34.0 | 21.0 | 6.82 | 24.0 |
| 4700.0 | U673D478F030GT1C | 0.770 x 3.650 [19.2 x 92.7] | 28.8 | 18.4 | 7.84 | 22.0 |
| 1200.0 | U673D128F030HE1C | 0.895 x 1.150 [22.7 x 29.2] | 106.0 | 64.0 | 2.83 | 67.0 |
| 2700.0 | U673D278F030HJ1C | 0.895 x 1.650 [22.7 x 41.9] | 54.0 | 33.4 | 4.51 | 37.0 |
| 3900.0 | U673D398F030HL1C | 0.895 x 2.150 [22.7 x 54.6] | 37.0 | 23.7 | 5.97 | 27.0 |
| 4700.0 | U673D478F030HP1C | 0.895 x 2.650 [22.7 x 67.3] | 29.0 | 18.9 | 7.31 | 22.0 |
| 6800.0 | U673D688F030HS1C | 0.895 x 3.150 [22.7 x 80.0] | 24.0 | 16.0 | 8.57 | 19.0 |
| 8200.0 | U673D828F030HT1C | 0.895 x 3.650 [22.7 x 92.7] | 20.8 | 14.0 | 9.75 | 17.0 |
| 1800.0 | U673D188F030JE1C | 1.020 x 1.150 [25.9 x 29.2] | 85.0 | 53.0 | 3.39 | 56.0 |
| 3300.0 | U673D338F030JJ1C | 1.020 x 1.650 [25.9 x 41.9] | 43.7 | 28.0 | 5.33 | 31.0 |
| 4700.0 | U673D478F030JL1C | 1.020 x 2.150 [25.9 x 54.6] | 30.0 | 20.0 | 7.04 | 23.0 |
| 6800.0 | U673D688F030JP1C | 1.020 x 2.650 [25.9 x 67.3] | 23.7 | 16.2 | 8.53 | 20.0 |
| 8200.0 | U673D828F030JS1C | 1.020 x 3.150 [25.9 x 80.0] | 19.8 | 13.8 | 9.95 | 17.0 |
| 10 000.0 | U673D109F030JT1C | 1.020 x 3.650 [25.9 x 92.7] | 17.3 | 12.2 | 11.30 | 15.0 |
| 40 WVDC AT + 105 °C, SURGE = 55 V | | | | | | |
| 560.0 | U673D567F040GE1C | 0.770 x 1.150 [19.6 x 29.2] | 191.0 | 86.0 | 2.22 | 89.0 |
| 1000.0 | U673D108F040GJ1C | 0.770 x 1.650 [19.6 x 41.9] | 94.0 | 47.0 | 3.57 | 67.0 |
| 1500.0 | U673D158F040GL1C | 0.770 x 2.150 [19.6 x 54.6] | 64.0 | 32.0 | 4.80 | 30.0 |
| 1800.0 | U673D188F040GP1C | 0.770 x 2.650 [19.6 x 67.3] | 49.0 | 25.0 | 5.92 | 27.0 |
| 2200.0 | U673D228F040GS1C | 0.770 x 3.150 [19.6 x 80.0] | 40.0 | 21.0 | 7.00 | 30.0 |
| 2700.0 | U673D278F040GT1C | 0.770 x 3.650 [19.6 x 92.7] | 34.8 | 18.6 | 8.02 | 21.0 |
| 680.0 | U673D687F040HE1C | 0.895 x 1.150 [22.7 x 29.2] | 130.0 | 64.0 | 3.00 | 62.0 |
| 1500.0 | U673D158F040HJ1C | 0.895 x 1.650 [22.7 x 41.9] | 67.0 | 33.0 | 4.54 | 36.0 |
| 2200.0 | U673D228F040HL1C | 0.895 x 2.150 [22.7 x 54.6] | 45.0 | 23.0 | 6.05 | 26.0 |
| 3300.0 | U673D338F040HP1C | 0.895 x 2.650 [22.7 x 67.3] | 34.0 | 18.4 | 7.41 | 22.0 |
| 3900.0 | U673D398F040HS1C | 0.895 x 3.150 [22.7 x 80.0] | 29.0 | 16.8 | 8.63 | 19.0 |
| 4700.0 | U673D478F040HT1C | 0.895 x 3.650 [22.7 x 92.7] | 25.8 | 14.8 | 9.85 | 17.0 |
| 1000.0 | U673D108F040JE1C | 1.020 x 1.150 [25.9 x 29.2] | 105.0 | 53.0 | 3.41 | 55.0 |
| 2200.0 | U673D228F040JJ1C | 1.020 x 1.650 [25.9 x 41.9] | 51.7 | 28.0 | 5.42 | 30.0 |
| 2700.0 | U673D278F040JL1C | 1.020 x 2.150 [25.9 x 54.6] | 36.0 | 20.0 | 7.49 | 23.0 |
| 3900.0 | U673D398F040JP1C | 1.020 x 2.650 [25.9 x 67.3] | 28.7 | 16.0 | 8.90 | 19.0 |
| 4700.0 | U673D478F040JS1C | 1.020 x 3.150 [25.9 x 80.0] | 23.8 | 13.0 | 10.60 | 17.0 |
| 5600.0 | U673D568F040JT1C | 1.020 x 3.650 [25.9 x 92.7] | 20.3 | 12.0 | 11.40 | 16.0 |
| 50 WVDC AT + 105 °C, SURGE = 75 V | | | | | | |
| 390.0 | U673D397F050GE1C | 0.770 x 1.150 [19.6 x 29.2] | 212.0 | 86.0 | 2.21 | 89.0 |
| 820.0 | U673D827F050GJ1C | 0.770 x 1.650 [19.6 x 41.9] | 50.0 | 44.0 | 3.57 | 47.0 |
| 1200.0 | U673D128F050GL1C | 0.770 x 2.150 [19.6 x 54.6] | 74.0 | 32.0 | 4.70 | 35.0 |
| 1500.0 | U673D158F050GP1C | 0.770 x 2.650 [19.6 x 67.3] | 56.0 | 25.0 | 5.83 | 28.0 |
| 1800.0 | U673D188F050GS1C | 0.770 x 3.150 [19.6 x 80.0] | 44.0 | 20.0 | 7.00 | 23.0 |
| 2200.0 | U673D228F050GT1C | 0.770 x 3.650 [19.6 x 92.7] | 37.7 | 17.7 | 8.00 | 21.0 |
| 560.0 | U673D567F050HE1C | 0.895 x 1.150 [22.7 x 29.2] | 145.0 | 59.0 | 2.87 | 62.0 |
| 1200.0 | U673D128F050HJ1C | 0.895 x 1.650 [22.7 x 41.9] | 76.0 | 34.0 | 4.46 | 37.0 |
| 1800.0 | U673D188F050HL1C | 0.895 x 2.150 [22.7 x 54.6] | 50.0 | 23.3 | 6.02 | 26.0 |

U673D and U674D

Vishay Sprague

Aluminum Capacitors
+ 105 °C, Tubular Radial Lead



| STANDARD RATINGS in inches [millimeters] | | | | | | |
|---|------------------|-----------------------------|--------------------------------------|------------------|---|---------------------------------------|
| CAPACITANCE (μ F) | PART NUMBER | NOMINAL CASE SIZE D x L | MAX. ESR AT + 25 °C ($m\Omega$) | | MAX. RIPPLE AT + 85 °C (A) 20 kHz to 40 kHz | MAX. Z AT 100 kHz ($m\Omega$) |
| | | | 120 Hz | 20 kHz to 40 kHz | | |
| 50 WVDC AT + 105 °C, SURGE = 75 V | | | | | | |
| 2200.0 | U673D228F050HP1C | 0.895 x 2.650 [22.7 x 67.3] | 39.0 | 18.7 | 7.35 | 22.0 |
| 2700.0 | U673D278F050HS1C | 0.895 x 3.150 [22.7 x 80.0] | 31.4 | 15.7 | 8.65 | 19.0 |
| 3300.0 | U673D338F050HT1C | 0.895 x 3.650 [22.7 x 92.7] | 27.0 | 13.9 | 9.82 | 17.0 |
| 820.0 | U673D828F050JE1C | 1.020 x 1.150 [25.9 x 29.2] | 112.0 | 51.4 | 3.45 | 54.0 |
| 1500.0 | U673D158F050JJ1C | 1.020 x 1.650 [25.9 x 41.9] | 58.0 | 27.8 | 5.37 | 31.0 |
| 2200.0 | U673D228F050JL1C | 1.020 x 2.150 [25.9 x 54.6] | 39.0 | 19.7 | 7.09 | 23.0 |
| 3300.0 | U673D338F050JP1C | 1.020 x 2.650 [25.9 x 67.3] | 30.0 | 15.9 | 8.61 | 20.0 |
| 3900.0 | U673D398F050JS1C | 1.020 x 3.150 [25.9 x 80.0] | 25.0 | 13.6 | 10.10 | 18.0 |
| 4700.0 | U673D478F050JT1C | 1.020 x 3.650 [25.9 x 92.7] | 21.6 | 12.0 | 11.40 | 16.0 |
| 63 WVDC AT + 105 °C, SURGE = 85 V | | | | | | |
| 330.0 | U673D337F063GE1C | 0.770 x 1.150 [19.6 x 29.2] | 236.0 | 89.0 | 2.13 | 93.0 |
| 680.0 | U673D687F063GJ1C | 0.770 x 1.650 [19.6 x 41.9] | 117.0 | 47.0 | 3.44 | 50.0 |
| 1000.0 | U673D108F063GL1C | 0.770 x 2.150 [19.6 x 54.6] | 79.0 | 33.3 | 4.61 | 36.0 |
| 1200.0 | U673D128F063GP1C | 0.770 x 2.650 [19.6 x 67.3] | 63.0 | 27.0 | 5.61 | 30.0 |
| 1800.0 | U673D188F063GS1C | 0.770 x 3.150 [19.6 x 80.0] | 49.9 | 22.0 | 6.71 | 25.0 |
| 2200.0 | U673D228F063GT1C | 0.770 x 3.650 [19.6 x 92.7] | 41.7 | 18.9 | 7.74 | 22.0 |
| 560.0 | U673D567F063HE1C | 0.895 x 1.150 [22.7 x 29.2] | 159.0 | 66.0 | 2.79 | 69.0 |
| 1000.0 | U673D108F063HJ1C | 0.895 x 1.650 [22.7 x 41.9] | 82.0 | 35.4 | 4.38 | 38.0 |
| 1500.0 | U673D158F063HL1C | 0.895 x 2.150 [22.7 x 54.6] | 54.0 | 24.5 | 5.87 | 28.0 |
| 2200.0 | U673D228F063HP1C | 0.895 x 2.650 [22.7 x 67.3] | 41.0 | 19.3 | 7.24 | 22.0 |
| 2700.0 | U673D278F063HS1C | 0.895 x 3.150 [22.7 x 80.0] | 34.6 | 16.6 | 8.42 | 20.0 |
| 3300.0 | U673D338F063HT1C | 0.895 x 3.650 [22.7 x 92.7] | 29.0 | 14.5 | 9.61 | 18.0 |
| 680.0 | U673D687F063JE1C | 1.020 x 1.150 [25.9 x 29.2] | 122.0 | 51.0 | 3.70 | 54.0 |
| 1500.0 | U673D158F063JJ1C | 1.020 x 1.650 [25.9 x 41.9] | 63.0 | 28.0 | 5.54 | 31.0 |
| 2200.0 | U673D228F063JL1C | 1.020 x 2.150 [25.9 x 54.6] | 42.0 | 20.6 | 6.93 | 24.0 |
| 2700.0 | U673D278F063JP1C | 1.020 x 2.650 [25.9 x 67.3] | 32.9 | 16.5 | 8.45 | 20.0 |
| 3900.0 | U673D398F063JS1C | 1.020 x 3.150 [25.9 x 80.0] | 27.0 | 14.0 | 9.85 | 18.0 |
| 4700.0 | U673D478F063JT1C | 1.020 x 3.650 [25.9 x 92.7] | 23.3 | 12.4 | 11.20 | 16.0 |
| 75 WVDC AT + 105 °C, SURGE = 100 V | | | | | | |
| 270.0 | U673D277F075GE1C | 0.770 x 1.150 [19.6 x 29.2] | 311.0 | 141.0 | 1.73 | 145.0 |
| 560.0 | U673D567F075GJ1C | 0.770 x 1.650 [19.6 x 41.9] | 150.0 | 70.0 | 2.84 | 73.0 |
| 820.0 | U673D827F075GL1C | 0.770 x 2.150 [19.6 x 54.6] | 101.0 | 48.0 | 3.84 | 51.0 |
| 1200.0 | U673D128F075GP1C | 0.770 x 2.650 [19.6 x 67.3] | 77.0 | 37.3 | 4.77 | 40.0 |
| 1500.0 | U673D158F075GS1C | 0.770 x 3.150 [19.6 x 80.0] | 63.0 | 30.7 | 5.68 | 34.0 |
| 1800.0 | U673D188F075GT1C | 0.770 x 3.650 [19.6 x 92.7] | 53.0 | 26.4 | 6.55 | 30.0 |
| 390.0 | U673D397F075HE1C | 0.895 x 1.150 [22.7 x 29.2] | 214.0 | 100.0 | 2.27 | 104.0 |
| 820.0 | U673D827F075HJ1C | 0.895 x 1.650 [22.7 x 41.9] | 104.0 | 50.0 | 3.67 | 53.0 |
| 1200.0 | U673D128F075HL1C | 0.895 x 2.150 [22.7 x 54.6] | 73.0 | 36.0 | 4.83 | 39.0 |
| 1800.0 | U673D188F075HP1C | 0.895 x 2.650 [22.7 x 67.3] | 54.0 | 27.5 | 6.06 | 31.0 |
| 2200.0 | U673D228F075HS1C | 0.895 x 3.150 [22.7 x 80.0] | 45.0 | 23.0 | 7.12 | 26.0 |
| 2700.0 | U673D278F075HT1C | 0.895 x 3.650 [22.7 x 92.7] | 37.0 | 19.8 | 8.23 | 23.0 |
| 560.0 | U673D567F075JE1C | 1.020 x 1.150 [25.9 x 29.2] | 159.0 | 78.0 | 2.81 | 81.0 |
| 1200.0 | U673D128F075JJ1C | 1.020 x 1.650 [25.9 x 41.9] | 82.0 | 41.4 | 4.40 | 44.0 |
| 1800.0 | U673D188F075JL1C | 1.020 x 2.150 [25.9 x 54.6] | 53.9 | 28.0 | 5.95 | 30.0 |
| 2200.0 | U673D228F075JP1C | 1.020 x 2.650 [25.9 x 67.3] | 41.8 | 22.2 | 7.29 | 25.0 |
| 2700.0 | U673D278F075JS1C | 1.020 x 3.150 [25.9 x 80.0] | 33.7 | 18.5 | 8.60 | 22.0 |
| 3300.0 | U673D338F075JT1C | 1.020 x 3.650 [25.9 x 92.7] | 29.0 | 16.2 | 9.80 | 19.0 |



| STANDARD RATINGS in inches [millimeters] | | | | | | |
|---|------------------|-----------------------------|--------------------------------------|------------------|-------------------------------|---------------------------------------|
| CAPACITANCE (μ F) | PART NUMBER | NOMINAL CASE SIZE D x L | MAX. ESR AT + 25 °C ($m\Omega$) | | MAX. RIPPLE AT + 85 °C (A) | MAX. Z AT 100 kHz ($m\Omega$) |
| | | | 120 Hz | 20 kHz to 40 kHz | 20 kHz to 40 kHz | |
| 100 WVDC AT + 105 °C, SURGE = 125 V | | | | | | |
| 150.0 | U673D157F100GE1C | 0.770 x 1.150 [19.6 x 29.2] | 698.0 | 324.0 | 1.14 | 326.0 |
| 270.0 | U673D277F100GJ1C | 0.770 x 1.650 [19.6 x 41.9] | 329.0 | 154.0 | 1.92 | 156.0 |
| 390.0 | U673D397F100GL1C | 0.770 x 2.150 [19.6 x 54.6] | 221.0 | 104.0 | 2.60 | 106.0 |
| 560.0 | U673D567F100GP1C | 0.770 x 2.650 [19.6 x 67.3] | 164.0 | 78.0 | 3.39 | 80.0 |
| 680.0 | U673D687F100GS1C | 0.770 x 3.150 [19.6 x 80.0] | 131.0 | 63.0 | 3.96 | 65.0 |
| 820.0 | U673D827F100GT1C | 0.770 x 3.650 [19.6 x 92.7] | 110.0 | 53.0 | 4.60 | 54.0 |
| 220.0 | U673D227F100HE1C | 0.895 x 1.150 [22.7 x 29.2] | 452.0 | 212.0 | 1.55 | 215.0 |
| 390.0 | U673D397F100HJ1C | 0.895 x 1.650 [22.7 x 41.9] | 216.0 | 103.0 | 2.57 | 106.0 |
| 680.0 | U673D687F100HL1C | 0.895 x 2.150 [22.7 x 54.6] | 143.0 | 69.0 | 3.49 | 71.0 |
| 820.0 | U673D827F100HP1C | 0.895 x 2.650 [22.7 x 67.3] | 107.0 | 52.0 | 4.37 | 53.0 |
| 1000.0 | U673D108F100HS1C | 0.895 x 3.150 [22.7 x 80.0] | 89.0 | 44.0 | 5.15 | 45.0 |
| 1200.0 | U673D128F100HT1C | 0.895 x 3.650 [22.7 x 92.7] | 76.0 | 38.0 | 5.93 | 39.0 |
| 270.0 | U673D277F100JE1C | 1.020 x 1.150 [25.9 x 29.2] | 337.0 | 162.0 | 1.95 | 163.0 |
| 560.0 | U673D567F100JJ1C | 1.020 x 1.650 [25.9 x 41.9] | 163.0 | 79.0 | 3.17 | 81.0 |
| 820.0 | U673D827F100JL1C | 1.020 x 2.150 [25.9 x 54.6] | 109.0 | 54.0 | 4.27 | 55.0 |
| 1200.0 | U673D128F100JP1C | 1.020 x 2.650 [25.9 x 67.3] | 83.0 | 42.0 | 5.28 | 43.0 |
| 1500.0 | U673D158F100JS1C | 1.020 x 3.150 [25.9 x 80.0] | 67.0 | 34.0 | 6.29 | 35.0 |
| 1800.0 | U673D188F100JT1C | 1.020 x 3.650 [25.9 x 92.7] | 57.0 | 29.5 | 7.26 | 31.0 |
| 150 WVDC AT + 105 °C, SURGE = 200 V | | | | | | |
| 56.0 | U673D566F150GE1C | 0.770 x 1.150 [19.6 x 29.2] | 1733.0 | 881.0 | 0.694 | 895.0 |
| 100.0 | U673D107F150GJ1C | 0.770 x 1.650 [19.6 x 41.9] | 886.0 | 450.0 | 1.12 | 460.0 |
| 180.0 | U673D187F150GL1C | 0.770 x 2.150 [19.6 x 54.6] | 569.0 | 290.0 | 1.56 | 297.0 |
| 220.0 | U673D227F150GP1C | 0.770 x 2.650 [19.6 x 67.3] | 419.0 | 215.0 | 1.99 | 220.0 |
| 330.0 | U673D337F150GS1C | 0.770 x 3.150 [19.6 x 80.0] | 333.0 | 170.0 | 2.41 | 175.0 |
| 390.0 | U673D397F150GT1C | 0.770 x 3.650 [19.6 x 92.7] | 276.0 | 141.0 | 2.83 | 148.0 |
| 82.0 | U673D826F150HE1C | 0.895 x 1.150 [22.7 x 29.2] | 1152.0 | 588.0 | 0.936 | 592.0 |
| 180.0 | U673D187F150HL1C | 0.895 x 1.650 [22.7 x 41.9] | 579.0 | 296.0 | 1.51 | 300.0 |
| 270.0 | U673D277F150HL1C | 0.895 x 2.150 [22.7 x 54.6] | 376.0 | 193.0 | 2.09 | 198.0 |
| 390.0 | U673D397F150HP1C | 0.895 x 2.650 [22.7 x 67.3] | 279.0 | 143.0 | 2.66 | 148.0 |
| 470.0 | U673D477F150HT1C | 0.895 x 3.150 [22.7 x 80.0] | 222.0 | 115.0 | 3.19 | 120.0 |
| 560.0 | U673D567F150HT1C | 0.895 x 3.650 [22.7 x 92.7] | 185.0 | 96.0 | 3.74 | 100.0 |

| ORIGINAL RATINGS | | | | | | |
|--|----------------------------|-----------|--------------------------------------|--------|-------------------------------|---|
| CAPACITANCE (μ F) | PART NUMBER ⁽¹⁾ | CASE CODE | MAX. ESR AT + 25 °C ($m\Omega$) | | MAX. RIPPLE AT + 85 °C (A) | MAX. IMPEDANCE AT 100 kHz ($m\Omega$) |
| | | | 120 Hz | 20 kHz | 20 kHz to 100 kHz | |
| 6.3 WVDC at 105 °C, SURGE = 9 V | | | | | | |
| 1500.0 | U673D158H6R3GE1C | GE | 98.0 | 69.0 | 2.48 | 70.0 |
| 2200.0 | U673D228H6R3HE1C | HE | 71.0 | 51.0 | 3.18 | 52.0 |
| 2700.0 | U673D278H6R3JE1C | JE | 62.0 | 47.0 | 3.60 | 49.0 |
| 3900.0 | U673D398H6R3HJ1C | HJ | 41.0 | 30.0 | 4.76 | 31.0 |
| 5600.0 | U673D568H6R3JJ1C | JJ | 33.0 | 25.0 | 5.66 | 27.0 |
| 6800.0 | U673D688H6R3GS1C | GS | 23.0 | 18.0 | 7.40 | 19.0 |
| 8200.0 | U673D828H6R3JL1C | JL | 23.0 | 18.0 | 7.41 | 20.0 |
| 10 000.0 | U673D109H6R3HS1C | HS | 19.0 | 15.0 | 8.85 | 17.0 |
| 12 000.0 | U673D129H6R3JP1C | JP | 19.0 | 15.0 | 8.86 | 17.0 |
| 15 000.0 | U673D159H6R3JS1C | JS | 15.0 | 13.0 | 10.20 | 14.0 |
| 18 000.0 | U673D189H6R3JT1C | JT | 14.0 | 12.0 | 11.40 | 13.0 |

Note

⁽¹⁾ For applications requiring single ended, 3 lead capacitors, change the Part Number U673D to Part Number U674D. Type U674D is only available in terminal style "A".

U673D and U674D

Vishay Sprague

Aluminum Capacitors
+ 105 °C, Tubular Radial Lead



| ORIGINAL RATINGS | | | | | | |
|---|------------------|-----------|--------------------------------------|--------|---|--|
| CAPACITANCE (μ F) | PART NUMBER (1) | CASE CODE | MAX. ESR AT + 25 °C (m Ω) | | MAX. RIPPLE AT + 85 °C (A) 20 kHz to 100 kHz | MAX. IMPEDANCE AT 100 kHz (m Ω) |
| | | | 120 Hz | 20 kHz | | |
| 7.5 WVDC AT + 105 °C, SURGE = 10 V | | | | | | |
| 1200.0 | U673D128H7R5GE1C | GE | 115.0 | 76.0 | 2.36 | 78.0 |
| 1800.0 | U673D188H7R5HE1C | HE | 80.0 | 55.0 | 3.06 | 56.0 |
| 2700.0 | U673D278H7R5JE1C | JE | 62.0 | 45.0 | 3.68 | 46.0 |
| 3900.0 | U673D398H7R5HJ1C | HJ | 39.0 | 28.0 | 4.92 | 29.0 |
| 4700.0 | U673D478H7R5JJ1C | JJ | 35.0 | 25.0 | 5.66 | 26.0 |
| 5600.0 | U673D568H7R5HL1C | HL | 28.0 | 20.0 | 6.50 | 22.0 |
| 6800.0 | U673D688H7R5HP1C | HP | 23.0 | 17.0 | 7.70 | 19.0 |
| 8200.0 | U673D828H7R5JL1C | JL | 23.0 | 18.0 | 7.41 | 19.0 |
| 10 000.0 | U673D109H7R5JP1C | JP | 19.0 | 15.0 | 8.86 | 16.0 |
| 12 000.0 | U673D129H7R5JS1C | JS | 17.0 | 13.0 | 10.20 | 14.0 |
| 15 000.0 | U673D159H7R5JT1C | JT | 14.0 | 12.0 | 11.40 | 13.0 |
| 10 WVDC AT + 105 °C, SURGE = 14 V | | | | | | |
| 1000.0 | U673D108H010GE1C | GE | 123.0 | 76.0 | 2.36 | 77.0 |
| 1500.0 | U673D158H010HE1C | HE | 89.0 | 56.0 | 3.03 | 58.0 |
| 2200.0 | U673D228H010JE1C | JE | 67.0 | 45.0 | 3.68 | 47.0 |
| 3300.0 | U673D338H010HJ1C | HJ | 43.0 | 29.0 | 4.84 | 30.0 |
| 3900.0 | U673D398H010GP1C | GP | 31.0 | 20.0 | 6.51 | 23.0 |
| 4700.0 | U673D478H010JJ1C | JJ | 35.0 | 24.0 | 5.78 | 26.0 |
| 5600.0 | U673D568H010HP1C | HP | 22.0 | 15.0 | 8.20 | 18.0 |
| 6800.0 | U673D688H010JL1C | JL | 23.0 | 16.0 | 7.86 | 19.0 |
| 8200.0 | U673D828H010JP1C | JP | 19.0 | 14.0 | 9.17 | 17.0 |
| 10 000.0 | U673D109H010JS1C | JS | 16.0 | 12.0 | 10.60 | 15.0 |
| 12 000.0 | U673D129H010JT1C | JT | 14.0 | 11.0 | 11.90 | 14.0 |
| 12 WVDC AT + 105 °C, SURGE = 16 V | | | | | | |
| 1000.0 | U673D108H012GE1C | GE | 126.0 | 76.0 | 2.36 | 79.0 |
| 1500.0 | U673D158H012HE1C | HE | 88.0 | 55.0 | 3.06 | 58.0 |
| 2200.0 | U673D228H012JE1C | JE | 68.0 | 43.0 | 3.77 | 45.0 |
| 2700.0 | U673D278H012GL1C | GL | 41.0 | 25.0 | 5.31 | 27.0 |
| 3300.0 | U673D338H012HJ1C | HJ | 45.0 | 29.0 | 4.84 | 31.0 |
| 3900.0 | U673D398H012JJ1C | JJ | 38.0 | 25.0 | 5.66 | 28.0 |
| 4700.0 | U673D478H012HL1C | HL | 30.0 | 19.0 | 6.67 | 21.0 |
| 5600.0 | U673D568H012JL1C | JL | 24.0 | 17.0 | 7.62 | 21.0 |
| 6800.0 | U673D688H012HS1C | HS | 19.0 | 13.0 | 9.51 | 17.0 |
| 8200.0 | U673D828H012JP1C | JP | 19.0 | 14.0 | 9.17 | 18.0 |
| 10 000.0 | U673D109H012JS1C | JS | 16.0 | 12.0 | 10.60 | 16.0 |
| 12 000.0 | U673D129H012JT1C | JT | 14.0 | 10.0 | 12.40 | 14.0 |
| 15 WVDC AT + 105 °C, SURGE = 20 V | | | | | | |
| 820.0 | U673D827H015GE1C | GE | 142.0 | 78.0 | 2.33 | 80.0 |
| 1500.0 | U673D158H015HE1C | HE | 86.0 | 51.0 | 3.18 | 53.0 |
| 1800.0 | U673D188H015JE1C | JE | 74.0 | 46.0 | 3.64 | 48.0 |
| 2700.0 | U673D278H015HJ1C | HJ | 47.0 | 28.0 | 4.92 | 30.0 |
| 3300.0 | U673D338H015GP1C | GP | 34.0 | 20.0 | 6.51 | 23.0 |
| 3900.0 | U673D398H015JJ1C | JJ | 37.0 | 24.0 | 5.78 | 27.0 |
| 5600.0 | U673D568H015JL1C | JL | 25.0 | 17.0 | 7.62 | 20.0 |
| 6800.0 | U673D688H015JP1C | JP | 20.0 | 13.0 | 9.51 | 17.0 |
| 8200.0 | U673D828H015JS1C | JS | 17.0 | 12.0 | 10.60 | 16.0 |
| 12 000.0 | U673D129H015JT1C | JT | 15.0 | 10.0 | 12.40 | 14.0 |

Note

(1) For applications requiring single ended, 3 lead capacitors, change the Part Number U673D to Part Number U674D. Type U674D is only available in terminal style "A".



| ORIGINAL RATINGS | | | | | | |
|--|----------------------------|-----------|--------------------------------------|--------|-------------------------------|--|
| CAPACITANCE (μ F) | PART NUMBER ⁽¹⁾ | CASE CODE | MAX. ESR AT + 25 °C ($m\Omega$) | | MAX. RIPPLE AT + 85 °C (A) | MAX. IMPEDANCE AT 100 kHz ($m\Omega$) |
| | | | 120 Hz | 20 kHz | 20 kHz to 100 kHz | |
| 20 WVDC AT + 105 °C, SURGE = 30 V | | | | | | |
| 680.0 | U673D687H020GE1C | GE | 131.0 | 72.0 | 2.42 | 75.0 |
| 1000.0 | U673D108H020HE1C | HE | 86.0 | 50.0 | 3.21 | 54.0 |
| 1500.0 | U673D158H020JE1C | JE | 71.0 | 43.0 | 3.68 | 45.0 |
| 2200.0 | U673D228H020HJ1C | HJ | 44.0 | 26.0 | 5.11 | 28.0 |
| 2700.0 | U673D278H020JJ1C | JJ | 37.0 | 23.0 | 5.90 | 25.0 |
| 3300.0 | U673D338H020HL1C | HL | 30.0 | 19.0 | 6.67 | 21.0 |
| 3900.0 | U673D398H020GT1C | GT | 24.0 | 15.0 | 8.69 | 18.0 |
| 4700.0 | U673D478H020JL1C | JL | 26.0 | 17.0 | 7.62 | 20.0 |
| 5600.0 | U673D568H020JP1C | JP | 20.0 | 14.0 | 9.17 | 17.0 |
| 6800.0 | U673D688H020JS1C | JS | 17.0 | 12.0 | 10.60 | 16.0 |
| 8200.0 | U673D828H020JT1C | JT | 15.0 | 10.0 | 12.40 | 14.0 |
| 25 WVDC AT + 105 °C, SURGE = 35 V | | | | | | |
| 560.0 | U673D567H025GE1C | GE | 144.0 | 67.0 | 2.51 | 70.0 |
| 820.0 | U673D827H025HE1C | HE | 103.0 | 51.0 | 3.18 | 55.0 |
| 1200.0 | U673D128H025JE1C | JE | 80.0 | 42.0 | 3.81 | 44.0 |
| 1500.0 | U673D158H025GL1C | GL | 49.0 | 24.0 | 5.42 | 26.0 |
| 1800.0 | U673D188H025HJ1C | HJ | 52.0 | 27.0 | 5.01 | 30.0 |
| 2200.0 | U673D228H025JJ1C | JJ | 41.0 | 23.0 | 5.90 | 25.0 |
| 2700.0 | U673D278H025GS1C | GS | 31.0 | 16.0 | 7.85 | 19.0 |
| 3300.0 | U673D338H025JL1C | JL | 28.0 | 16.0 | 7.86 | 19.0 |
| 3900.0 | U673D398H025HS1C | HS | 23.0 | 13.0 | 9.51 | 16.0 |
| 4700.0 | U673D478H025JP1C | JP | 22.0 | 13.0 | 9.51 | 16.0 |
| 5600.0 | U673D568H025JS1C | JS | 19.0 | 11.0 | 11.10 | 14.0 |
| 6800.0 | U673D688H025JT1C | JT | 16.0 | 10.0 | 12.40 | 13.0 |
| 40 WVDC AT + 105 °C, SURGE = 55 V | | | | | | |
| 330.0 | U673D337H040GE1C | GE | 199.0 | 69.0 | 2.48 | 71.0 |
| 560.0 | U673D567H040HE1C | HE | 135.0 | 50.0 | 3.21 | 54.0 |
| 680.0 | U673D687H040JE1C | JE | 110.0 | 44.0 | 3.72 | 47.0 |
| 1000.0 | U673D108H040HJ1C | HJ | 67.0 | 27.0 | 5.01 | 30.0 |
| 1200.0 | U673D128H040GP1C | GP | 51.0 | 20.0 | 6.51 | 22.0 |
| 1500.0 | U673D158H040JJ1C | JJ | 55.0 | 23.0 | 5.90 | 26.0 |
| 1800.0 | U673D188H040GS1C | GS | 41.0 | 16.0 | 7.85 | 19.0 |
| 2200.0 | U673D228H040JL1C | JL | 38.0 | 17.0 | 7.62 | 19.0 |
| 2700.0 | U673D278H040JP1C | JP | 29.0 | 14.0 | 9.17 | 17.0 |
| 3300.0 | U673D338H040JS1C | JS | 24.0 | 12.0 | 10.60 | 15.0 |
| 3900.0 | U673D398H040JT1C | JT | 21.0 | 10.0 | 12.40 | 13.0 |
| 50 WVDC AT + 105 °C, SURGE = 75 V | | | | | | |
| 270.0 | U673D277H050GE1C | GE | 249.0 | 70.0 | 2.46 | 72.0 |
| 390.0 | U673D397H050HE1C | HE | 170.0 | 52.0 | 3.15 | 54.0 |
| 470.0 | U673D477H050GJ1C | GJ | 122.0 | 36.0 | 3.96 | 38.0 |
| 560.0 | U673D567H050JE1C | JE | 129.0 | 43.0 | 3.77 | 45.0 |
| 820.0 | U673D827H050HJ1C | HJ | 85.0 | 27.0 | 5.01 | 30.0 |
| 1000.0 | U673D108H050JJ1C | JJ | 65.0 | 23.0 | 5.90 | 25.0 |
| 1200.0 | U673D128H050HL1C | HL | 57.0 | 19.0 | 6.67 | 21.0 |
| 1500.0 | U673D158H050JL1C | JL | 44.0 | 17.0 | 7.62 | 20.0 |
| 1800.0 | U673D188H050HS1C | HS | 36.0 | 13.0 | 9.51 | 16.0 |
| 2200.0 | U673D228H050JP1C | JP | 34.0 | 14.0 | 9.17 | 17.0 |
| 2700.0 | U673D278H050JS1C | JS | 28.0 | 12.0 | 10.60 | 15.0 |
| 3300.0 | U673D338H050JT1C | JT | 24.0 | 10.0 | 12.40 | 13.0 |

Note

⁽¹⁾ For applications requiring single ended, 3 lead capacitors, change the Part Number U673D to Part Number U674D. Type U674D is only available in terminal style "A".

U673D and U674D

Vishay Sprague

Aluminum Capacitors
+ 105 °C, Tubular Radial Lead



| ORIGINAL RATINGS | | | | | | |
|--|------------------|-----------|--------------------------------------|--------|---|--|
| CAPACITANCE (μ F) | PART NUMBER (1) | CASE CODE | MAX. ESR AT + 25 °C (m Ω) | | MAX. RIPPLE AT + 85 °C (A) 20 kHz to 100 kHz | MAX. IMPEDANCE AT 100 kHz (m Ω) |
| | | | 120 Hz | 20 kHz | | |
| 60 WVDC AT + 105 °C, SURGE = 85 V | | | | | | |
| 180.0 | U673D187H060GE1C | GE | 341.0 | 73.0 | 2.41 | 75.0 |
| 270.0 | U673D277H060HE1C | HE | 215.0 | 51.0 | 3.18 | 54.0 |
| 330.0 | U673D337H060GJ1C | GJ | 167.0 | 38.0 | 3.85 | 40.0 |
| 390.0 | U673D397H060JE1C | JE | 164.0 | 43.0 | 3.77 | 45.0 |
| 560.0 | U673D567H060HJ1C | HJ | 106.0 | 27.0 | 5.01 | 29.0 |
| 680.0 | U673D687H060GP1C | GP | 84.0 | 21.0 | 6.35 | 23.0 |
| 820.0 | U673D827H060JJ1C | JJ | 82.0 | 23.0 | 5.90 | 26.0 |
| 1000.0 | U673D108H060GT1C | GT | 57.0 | 15.0 | 8.69 | 18.0 |
| 1200.0 | U673D128H060JL1C | JL | 55.0 | 17.0 | 7.62 | 20.0 |
| 1500.0 | U673D158H060JP1C | JP | 42.0 | 13.0 | 9.51 | 17.0 |
| 1800.0 | U673D188H060JS1C | JS | 35.0 | 12.0 | 10.60 | 16.0 |
| 2200.0 | U673D228H060JT1C | JT | 30.0 | 10.0 | 12.40 | 14.0 |
| 75 WVDC AT + 105 °C, SURGE = 100 V | | | | | | |
| 120.0 | U673D127H075GE1C | GE | 600.0 | 169.0 | 1.58 | 170.0 |
| 180.0 | U673D187H075HE1C | HE | 399.0 | 116.0 | 2.10 | 117.0 |
| 220.0 | U673D227H075JE1C | JE | 300.0 | 92.0 | 2.57 | 93.0 |
| 330.0 | U673D337H075HJ1C | HJ | 196.0 | 59.0 | 3.39 | 60.0 |
| 470.0 | U673D477H075JJ1C | JJ | 145.0 | 46.0 | 4.17 | 47.0 |
| 560.0 | U673D567H075HL1C | HL | 131.0 | 40.0 | 4.59 | 41.0 |
| 680.0 | U673D687H075JL1C | JL | 98.0 | 32.0 | 4.02 | 31.0 |
| 820.0 | U673D827H075HS1C | HS | 80.0 | 26.0 | 6.72 | 28.0 |
| 1000.0 | U673D108H075JP1C | JP | 73.0 | 24.0 | 7.00 | 26.0 |
| 1200.0 | U673D128H075JS1C | JS | 59.0 | 20.0 | 8.27 | 22.0 |
| 1500.0 | U673D158H075JT1C | JT | 50.0 | 18.0 | 9.30 | 20.0 |
| 100 WVDC AT + 105 °C, SURGE = 125 V | | | | | | |
| 68.0 | U673D686H100GE1C | GE | 992.0 | 292.0 | 1.20 | 295.0 |
| 120.0 | U673D127H100HE1C | HE | 602.0 | 182.0 | 1.68 | 185.0 |
| 150.0 | U673D157H100JE1C | JE | 490.0 | 150.0 | 2.01 | 155.0 |
| 220.0 | U673D227H100HJ1C | HJ | 294.0 | 90.0 | 2.74 | 91.0 |
| 270.0 | U673D277H100GP1C | GP | 240.0 | 73.0 | 3.40 | 74.0 |
| 330.0 | U673D337H100JJ1C | JJ | 239.0 | 75.0 | 3.27 | 76.0 |
| 390.0 | U673D397H100GT1C | GT | 161.0 | 50.0 | 4.76 | 51.0 |
| 470.0 | U673D477H100JL1C | JL | 159.0 | 51.0 | 4.40 | 52.0 |
| 560.0 | U673D567H100JP1C | JP | 120.0 | 39.0 | 5.49 | 40.0 |
| 680.0 | U673D687H100JS1C | JS | 96.0 | 32.0 | 6.53 | 33.0 |
| 820.0 | U673D827H100JT1C | JT | 81.0 | 28.0 | 7.46 | 29.0 |
| 150 WVDC AT + 105 °C, SURGE = 200 V | | | | | | |
| 56.0 | U673D566H150GE1C | GE | 1733.0 | 881.0 | 0.694 | 895.0 |
| 82.0 | U673D826H150HE1C | HE | 1152.0 | 588.0 | 0.936 | 592.0 |
| 100.0 | U673D107H150GJ1C | GJ | 886.0 | 450.0 | 1.12 | 460.0 |
| 150.0 | U673D157H150GL1C | GL | 569.0 | 290.0 | 1.56 | 297.0 |
| 220.0 | U673D227H150HL1C | HL | 376.0 | 193.0 | 2.09 | 198.0 |
| 330.0 | U673D337H150JL1C | JL | 275.0 | 142.0 | 2.64 | 148.0 |
| 470.0 | U673D477H150JP1C | JP | 202.0 | 105.0 | 3.35 | 108.0 |
| 470.0 | U673D477H150HT1C | HT | 185.0 | 96.0 | 3.74 | 100.0 |
| 560.0 | U673D567H150JS1C | JS | 163.0 | 84.0 | 4.03 | 88.0 |
| 680.0 | U673D687H150JT1C | JT | 137.0 | 71.0 | 4.69 | 74.0 |

Note

(1) For applications requiring single ended, 3 lead capacitors, change the Part Number U673D to Part Number U674D. Type U674D is only available in terminal style "A".



| ORIGINAL RATINGS | | | | | | |
|--|----------------------------|-----------|--------------------------------------|--------|---|--|
| CAPACITANCE (μ F) | PART NUMBER ⁽¹⁾ | CASE CODE | MAX. ESR AT + 25 °C ($m\Omega$) | | MAX. RIPPLE AT + 85 °C (A) 20 kHz to 100 kHz | MAX. IMPEDANCE AT 100 kHz ($m\Omega$) |
| | | | 120 Hz | 20 kHz | | |
| 200 WVDC AT + 105 °C, SURGE = 250 V | | | | | | |
| 33.0 | U673D336H200GE1C | GE | 2290.0 | 1000.0 | 0.651 | 1040.0 |
| 56.0 | U673D566H200HE1C | HE | 1510.0 | 670.0 | 0.878 | 680.0 |
| 82.0 | U673D826H200JE1C | JE | 1090.0 | 486.0 | 1.13 | 492.0 |
| 150.0 | U673D157H200JJ1C | JJ | 538.0 | 240.0 | 1.83 | 246.0 |
| 220.0 | U673D227H200JL1C | JL | 356.0 | 160.0 | 2.49 | 168.0 |
| 330.0 | U673D337H200HT1C | HT | 242.0 | 108.0 | 3.53 | 112.0 |
| 390.0 | U673D397H200JS1C | JS | 214.0 | 97.0 | 3.76 | 101.0 |
| 470.0 | U673D477H200JT1C | JT | 179.0 | 80.0 | 4.42 | 84.0 |
| 250 WVDC AT + 105 °C SURGE = 300 V | | | | | | |
| 22.0 | U673D226H250GE1C | GE | 2980.0 | 780.0 | 0.738 | 790.0 |
| 47.0 | U673D476H250GJ1C | GJ | 1310.0 | 370.0 | 1.24 | 380.0 |
| 100.0 | U673D107H250GP1C | GP | 740.0 | 195.0 | 2.09 | 200.0 |
| 150.0 | U673D157H250HP1C | HP | 467.0 | 125.0 | 2.84 | 130.0 |
| 220.0 | U673D227H250JP1C | JP | 343.0 | 94.0 | 3.54 | 98.0 |
| 270.0 | U673D277H250JS1C | JS | 270.0 | 75.0 | 4.27 | 79.0 |
| 330.0 | U673D337H250JT1C | JT | 222.0 | 61.0 | 5.05 | 65.0 |

Note

⁽¹⁾ For applications requiring single ended, 3 lead capacitors, change the Part Number U673D to Part Number U674D. Type U674D is only available in terminal style "A".



Disclaimer

All product specifications and data are subject to change without notice.

Vishay Intertechnology, Inc., its affiliates, agents, and employees, and all persons acting on its or their behalf (collectively, "Vishay"), disclaim any and all liability for any errors, inaccuracies or incompleteness contained herein or in any other disclosure relating to any product.

Vishay disclaims any and all liability arising out of the use or application of any product described herein or of any information provided herein to the maximum extent permitted by law. The product specifications do not expand or otherwise modify Vishay's terms and conditions of purchase, including but not limited to the warranty expressed therein, which apply to these products.

No license, express or implied, by estoppel or otherwise, to any intellectual property rights is granted by this document or by any conduct of Vishay.

The products shown herein are not designed for use in medical, life-saving, or life-sustaining applications unless otherwise expressly indicated. Customers using or selling Vishay products not expressly indicated for use in such applications do so entirely at their own risk and agree to fully indemnify Vishay for any damages arising or resulting from such use or sale. Please contact authorized Vishay personnel to obtain written terms and conditions regarding products designed for such applications.

Product names and markings noted herein may be trademarks of their respective owners.