

SC-Cut Crystal - Sine Wave - 5.0 Volts

- Frequency Range 10.0MHz to 100.0MHz
- 36.2 x 27.7 x 16.0mm 5 pin metal, solder-sealed package
- Supply Voltage 5.0 Volts
- SC-Cut Crystal
- Sine Wave Output
- EFC (Voltage control) as standard



DESCRIPTION

OC31E5S series oven-controlled crystal oscillators are close tolerance OCXOs with excellent phase noise performance.

SPECIFICATION

Crystal Cut:	SC-cut
Output Waveform:	Sine Wave
Supply Voltage:	+5.0 VDC \pm 0.2V
Frequency Range:	1.25MHz to 100.0MHz
Initial Calibration Tolerance:	\pm 0.5ppm max. (at V_{CON} +2.5V)
Frequency Stability	
over 0° to +60°C:	\pm 0.01 ppm
over -20° to +70°C:	\pm 0.02 ppm
over -40° to +85°C:	\pm 0.03 ppm
vs. Voltage Change:	$<$ \pm 20ppb for \pm 5% change
vs. Ageing:	\pm 2.0ppb max per day \pm 0.1 ppm per first year \pm 0.5 ppm over 10 years
vs. Load Change:	$<$ \pm 20ppb for \pm 5% change

Warm-up Time: 1 minutes max. to within \pm 0.1 ppm of nominal freq.

Voltage Control	
Control Voltage Centre:	+2.5 Volts (V_{CON})
Freq. Deviation Range:	\pm 0.5ppm min., \pm 2ppm max. ref. to 25°C and O.T.R.
Control Voltage Range:	2.5V \pm 2.0Volts
Transfer Function:	Positive: Increasing control voltage increases output frequency
Input Impedance:	100k Ω minimum
EFC Linearity:	\pm 10% maximum

Power Dissipation: 1.2W max. steady state
3.5W max. at turn on

Output	
Output Level:	+3dBm typ., +8dBm max. into 50 Ω load
Harmonics:	-30dBc min.
Spurious:	-75dBc min.

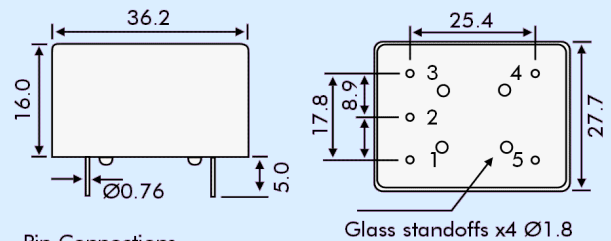
Reference Voltage: +4.0 \pm 0.3VDC or custom

Environmental	
Storage Temperature:	-55° to +125°C
Shock:	2000g, 0.3ms $\frac{1}{2}$ sine
Vibration:	10 ~2000Hz / 10g

PHASE NOISE (at 10MHz)

Offset	dBc/Hz
1Hz	-85
10Hz	-120
100Hz	-140
1kHz	-145
10kHz	-150

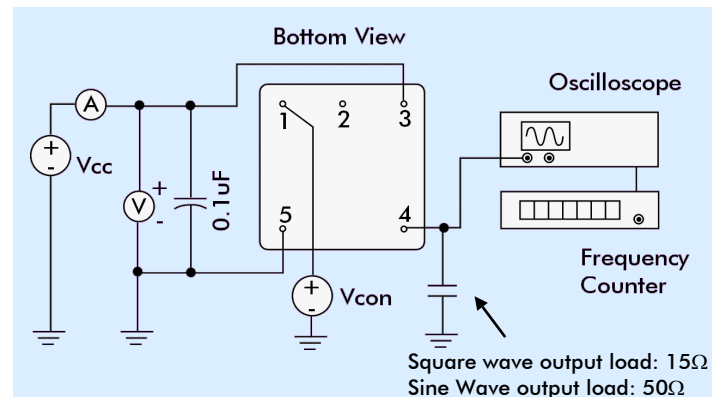
OUTLINE & DIMENSIONS



Pin Connections

1. Voltage Control EFC
2. Ground/case
3. RF Output
4. Reference Voltage Output
5. Supply Voltage

TEST CIRCUIT



PART NUMBER FORMAT

Example: **OC31GE5S-10.000-0.02/-20+70**

