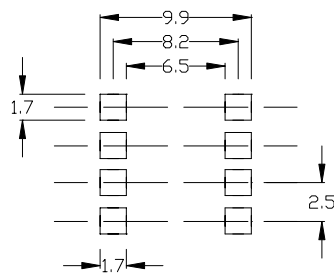
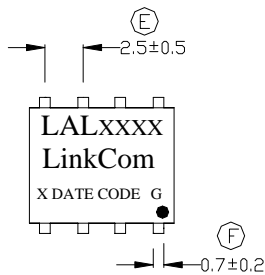
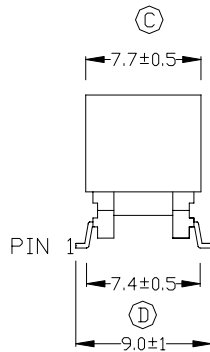
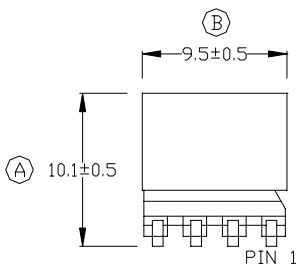


Broadband Access Transformer

- Designed to meet UL 60950 and EN 60950 requirements for supplementary insulation
- RoHS Compliant
- Operating Temperature -40°C to 85°C

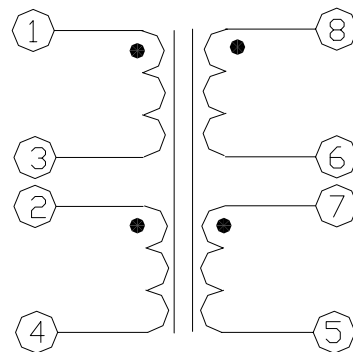
Electrical Specifications @25	
OCL:	PIN 1-4= 400uH \pm 10% @ 10KHz/0.1V/Ser. (PIN 2-3 Short)
Leakage Inductance:	PIN 8-6= 10uH Max. @ 100KHz/0.1V (PIN 1-4-2-3;7-5 Short)
D.C.R	PIN 1-3 = 0.66 ohm \pm 15%
	PIN 2-4 = 0.66 ohm \pm 15%
	PIN 7 -6 = 0.8 ohm \pm 15%
	PIN 8 -5 = 1.0 ohm \pm 15%
Hi-POT :	PRI. – SEC. =1875VAC/60Hz/2Seconds/1mA
Turn Ratio:	PIN 1-4 : PIN 8-6 = 1.4 \pm 2% :1

Dimensions (Units: mm)



SUGGESTED PADS LAYOUT

Schematic



Mark

- 1.LAL ****----LAL1142
2. X----PRODUCT LINE
3. DATE CODE----YYWW
4. G----RoHS