

AZ987

30 AMP MICRO AUTOMOTIVE RELAY

FEATURES

- Up to 30 Amp switching capability in a compact size
- Form A and C contacts available (single or twin relay)
- Vibration and shock resistant
- Epoxy sealed for automatic wave soldering
- ISO/TS 16949, ISO9001, ISO14000
- Tested in accordance with J2544
- Designed for high in-rush applications
- Cost effective
- Single and Dual (Twin) relay versions



CONTACTS

Arrangement	SPST (1 Form A) DPST (2 Form A) SPDT (1 Form C) DPDT (2 Form C)
Ratings	Resistive load: Max. switched power: 480 W Max. switched current: 30 A / 25A N.O. / N.C. Max. switched voltage: 30 VDC Rated load: 30 A at 16 VDC
Material	Silver tin oxide (silver nickel available - contact factory)
Resistance	< 50 milliohms initially (6 V, 1 A voltage drop method)

COIL

Power At Pickup Voltage (typical)	187 mW
Max. Continuous Dissipation	2.6 W at 20°C (68°F) ambient
Temperature Rise	34°C (61°F) at nominal coil voltage
Max Temperature	155°C (311°F)

NOTES

1. All values at 20°C (68°F).
2. Relay may pull in with less than "Must Operate" value.
3. Specifications subject to change without notice.

GENERAL DATA

Life Expectancy Mechanical Electrical	Minimum operations 1 x 10 ⁶ 3 x 10 ⁵ at 20 A 14 VDC Res. N.O.
Operate Time	3 ms typical at nominal coil voltage
Release Time)	1.5 ms typical at nominal coil voltage (with no coil suppression)
Dielectric Strength (at sea level for 1 min.)	500 Vrms coil to contact 500 Vrms between open contacts
Insulation Resistance	100 megohms min. at 20°C, 500 VDC 50% RH
Dropout	Greater than 12.5% of nominal coil voltage
Ambient Temperature Operating Storage	At nominal coil voltage -40°C (-40°F) to 105°C (221°F) -40°C (-40°F) to 155°C (311°F)
Vibration	6 g at 10-500 Hz
Shock	30 g, 6 ms
Enclosure	P.B.T. polyester
Terminals	Tinned copper alloy, P.C.
Max Solder Temp.	270°C (518°F)
Max Solder Time	5 seconds
Max Solvent Temp.	80°C (176°F)
Max Immersion Time	30 seconds
Weight	4 grams



AMERICAN ZETTLER, INC.

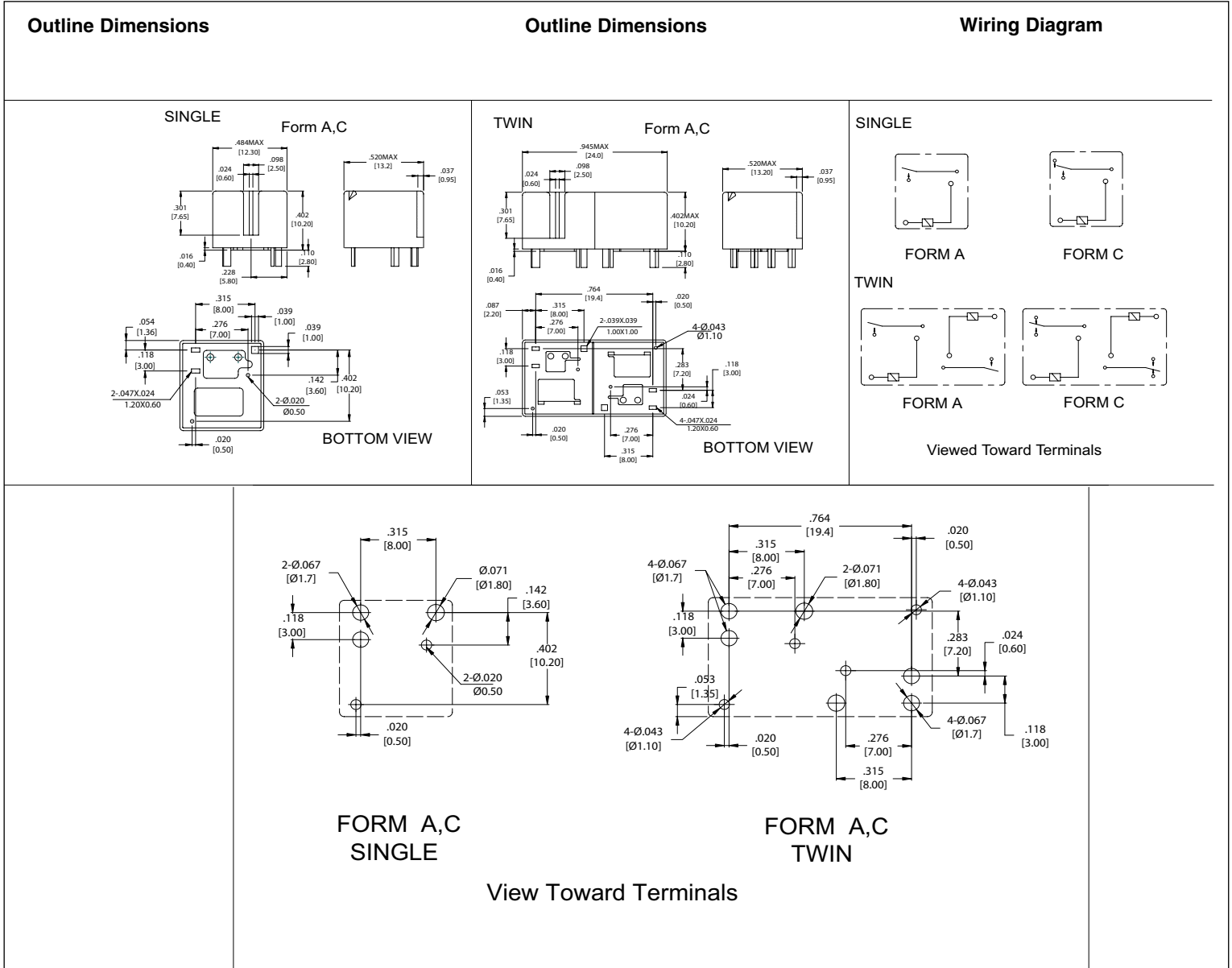
www.azettler.com

75 COLUMBIA • ALISO VIEJO, CA 92656 • PHONE: (949) 831-5000 • FAX: (949) 831-8642 • E-MAIL: SALES@AZETTLER.COM

04/04/08W

AZ987

MECHANICAL DATA



Dimensions in inches with millimeters in brackets below. Tolerance: ± .010"



AMERICAN ZETTLER, INC.

www.azettler.com

75 COLUMBIA • ALISO VIEJO, CA 92656 • PHONE: (949) 831-5000 • FAX: (949) 831-8642 • E-MAIL: SALES@AZETTLER.COM

AZ987

RELAY ORDERING DATA

STANDARD RELAYS - 1 FORM A, 1 FORM C (SINGLE)					
COIL SPECIFICATIONS				ORDER NUMBER	
Nominal Coil VDC	Must Operate VDC	Max. Continuous VDC	Coil Resistance $\pm 10\%$	1 Form A (SPST)	1 Form C (SPDT)
6	3.5	13.2	83	AZ987-1A-6DET	AZ987-1C-6DET
10	5.7	22.0	181	AZ987-1A-10DET	AZ987-1C-10DET
12	6.9	26.0	254	AZ987-1A-12DET	AZ987-1C-12DET
24	13.8	53.0	1016	AZ987-1A-24DET	AZ987-1C-24DET

STANDARD RELAYS - 2 FORM A, 2 FORM C (TWIN)					
COIL SPECIFICATIONS				ORDER NUMBER	
Nominal Coil VDC	Must Operate VDC	Max. Continuous VDC	Coil Resistance $\pm 10\%$	2 Form A (DPST)	2 Form C (DPDT)
6	3.5	13.2	83	AZ987-2A-6DET	AZ987-2C-6DET
10	5.7	22.0	181	AZ987-2A-10DET	AZ987-2C-10DET
12	6.9	26.0	254	AZ987-2A-12DET	AZ987-2C-12DET
24	13.8	53.0	1016	AZ987-2A-24DET	AZ987-2C-24DET



AMERICAN ZETTLER, INC.

www.azettler.com

75 COLUMBIA • ALISO VIEJO, CA 92656 • PHONE: (949) 831-5000 • FAX: (949) 831-8642 • E-MAIL: SALES@AZETTLER.COM

04/04/08W