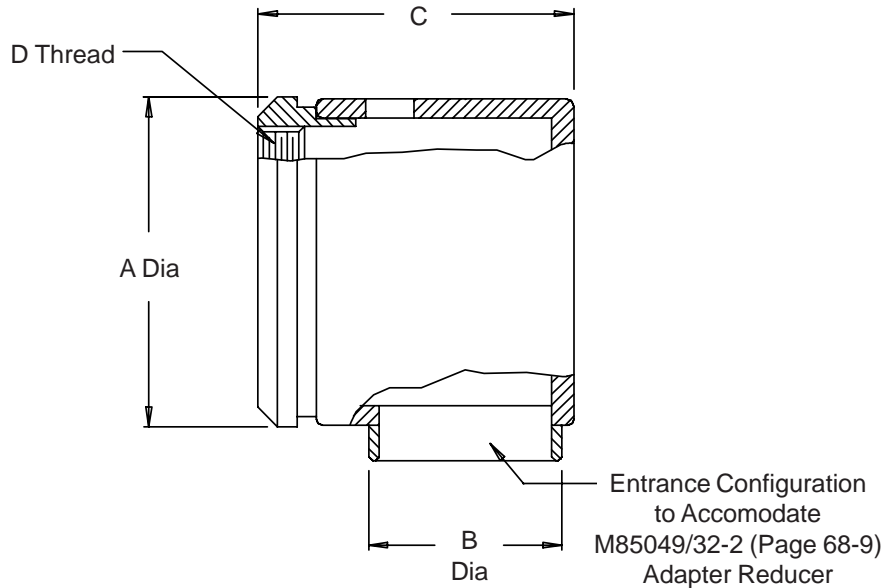


# AS85049/32-1

## 90° Adapter, Non-Environmental, RFI

MIL-DTL-38999  
Series I & II

**M85049/32-1-8**  
Basic Part No. \_\_\_\_\_ Dash No. \_\_\_\_\_



**TABLE I**

| Dash No. | Shell Size |           | A Dia Max    | B Dia Max   | C Max        | D Thread Class 2B |
|----------|------------|-----------|--------------|-------------|--------------|-------------------|
|          | Series I   | Series II |              |             |              |                   |
| 8        | 9          | 8         | .594 (15.1)  | .359 (9.1)  | .719 (18.3)  | .4375 - 28 UNEF   |
| 10       | 11         | 10        | .719 (18.3)  | .406 (10.3) | .766 (19.5)  | .5625 - 24 UNEF   |
| 12       | 13         | 12        | .844 (21.4)  | .500 (12.7) | .859 (21.8)  | .6875 - 24 UNEF   |
| 14       | 15         | 14        | .969 (24.6)  | .578 (14.7) | .938 (23.8)  | .8125 - 20 UNEF   |
| 16       | 17         | 16        | 1.094 (27.8) | .641 (16.3) | 1.000 (25.4) | .9375 - 20 UNEF   |
| 18       | 19         | 18        | 1.219 (31.0) | .688 (17.5) | 1.047 (26.6) | 1.0625 - 18 UNEF  |
| 20       | 21         | 20        | 1.344 (34.1) | .734 (18.6) | 1.094 (27.8) | 1.1875 - 18 UNEF  |
| 22       | 23         | 22        | 1.469 (37.3) | .796 (20.2) | 1.156 (29.4) | 1.3125 - 18 UNEF  |
| 24       | 25         | 24        | 1.594 (40.5) | .859 (21.8) | 1.219 (31.0) | 1.4375 - 18 UNEF  |

1. For complete dimensions see applicable Military Specification.
2. Metric dimensions (mm) are indicated in parentheses.
3. Material: Copper alloy. Finish: Tin-lead solder plate.