

# M83723/70 Receptacle Adapter



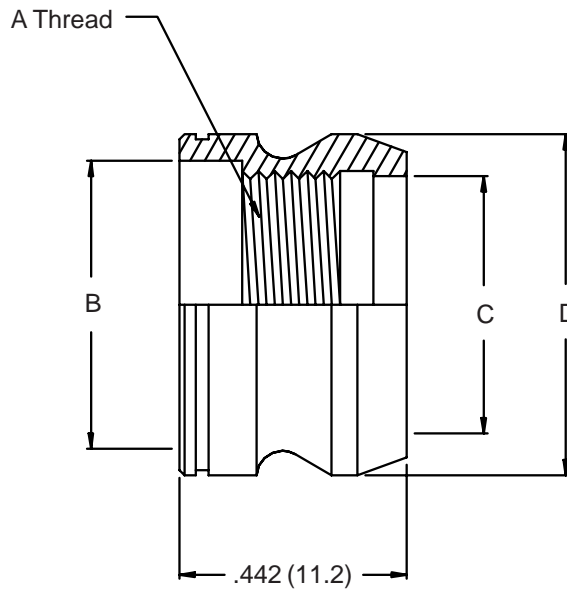
Miscellaneous  
Accessories

MIL-DTL-83723  
Series III  
Classes A, G, R and W

**M83723/70 W 22**

Basic Part No. \_\_\_\_\_ Dash No. \_\_\_\_\_

Material and Finish:  
 A = Aluminum, Black Anodize  
 R = Aluminum, Electroless Nickel  
 G = Corrosion Resistant Steel  
 Passivate  
 W = Aluminum, Cadmium Olive Drab over  
 Electroless Nickel



**TABLE I**

Shell Size	A Thread UNEF-2B	B Dia Max	C Dia	D Dia Max
8	.5264 - 24	.579 (14.7)	.525 (13.3)	.689 (17.5)
10	.6875 - 24	.714 (18.1)	.650 (16.5)	.814 (20.7)
12	.8750 - 20	.894 (22.7)	.840 (21.3)	1.001 (25.4)
14	.9375 - 20	.954 (24.2)	.900 (22.9)	1.064 (27.0)
16	1.0625 - 18	1.079 (27.4)	1.025 (26.0)	1.189 (30.2)
18	1.1875 - 18	1.204 (30.6)	1.150 (29.2)	1.330 (33.8)
20	1.3125 - 18	1.329 (33.8)	1.275 (32.4)	1.455 (37.0)
22	1.4375 - 18	1.454 (36.9)	1.400 (35.6)	1.580 (40.1)
24	1.5625 - 18	1.579 (40.1)	1.525 (38.7)	1.705 (43.3)

1. For complete dimensions see applicable Military Specification.
2. Metric dimensions (mm) are indicated in parentheses.