

How To Order M32139 Single Row Metal Shell Connectors

| Basic Spec | Slash Number - | Hardware | Shell Material | Space Class | |
|------------|--|---|--|--|---|
| M32139/ | <p>Plugs</p> <p>01-A – Pin Connector, 9 Contacts 01-B – Pin Connector, 15 Contacts 01-C – Pin Connector, 21 Contacts 01-D – Pin Connector, 25 Contacts 01-E – Pin Connector, 31 Contacts 01-F – Pin Connector, 37 Contacts 01-G – Pin Connector, 51 Contacts</p> <p>Receptacles</p> <p>02-A – Socket Connector, 9 Contacts 02-B – Socket Connector, 15 Contacts 02-C – Socket Connector, 21 Contacts 02-D – Socket Connector, 25 Contacts 02-E – Socket Connector, 31 Contacts 02-F – Socket Connector, 37 Contacts 02-G – Socket Connector, 51 Contacts</p> | <p>NEMA HP3-ETXBBB Wire (#30 AWG, 7 Strand Silver-Coated Copper, Extruded PTFE Insulation, 250 V rms, 200° C.)</p> <p>01 – 6 Inches White 02 – 18 Inches White 03 – 36 Inches White 04 – 6 Inches 10 Color Repeat 05 – 18 Inches 10 Color Repeat 06 – 36 Inches 10 Color Repeat</p> <p>M22759/33-30 Wire (#30 AWG, 7 Strand Silver-Coated High-Strength Copper, Extruded Cross-Linked Modified ETFE Insulation, 600 V rms, 200° C.)</p> <p>07 – 6 Inches White 08 – 18 Inches White 09 – 36 Inches White 10 – 6 Inches 10 Color Repeat 11 – 18 Inches 10 Color Repeat 12 – 36 Inches 10 Color Repeat</p> <p>Composite PTFE/Polyimide Wire (#30 AWG, 7 Strand Silver-Coated High-Strength Copper, Tape-Wrapped Dual-wall Modified ETFE/Polyimide Insulation, 600 V rms, 200° C.)</p> <p>13 – 6 Inches White 14 – 18 Inches White 15 – 36 Inches White 16 – 6 Inches 10 Color Repeat 17 – 18 Inches 10 Color Repeat 18 – 36 Inches 10 Color Repeat</p> | <p>S Jackscrew, #0-80, Hex Head (Slash 01 Pin Connectors Only)</p> <p>T Threaded Hole, #0-80 (Slash 02 Socket Connectors Only)</p> | <p>C Aluminum Shell, Cadmium Plated</p> <p>N Aluminum Shell, Electroless Nickel Plated</p> <p>S Stainless Steel Shell, Passivated</p> <p>T Titanium Shell, Unplated</p> | <p>S Space Class</p> <p>(Not For Use With Cadmium Plated Aluminum Shells)</p> <p>Omit for Non-Space Applications</p> |

Part Number Example

M32139/

02-A

01

S

N

S

MIL-DTL-32139 Nanominiature Connectors

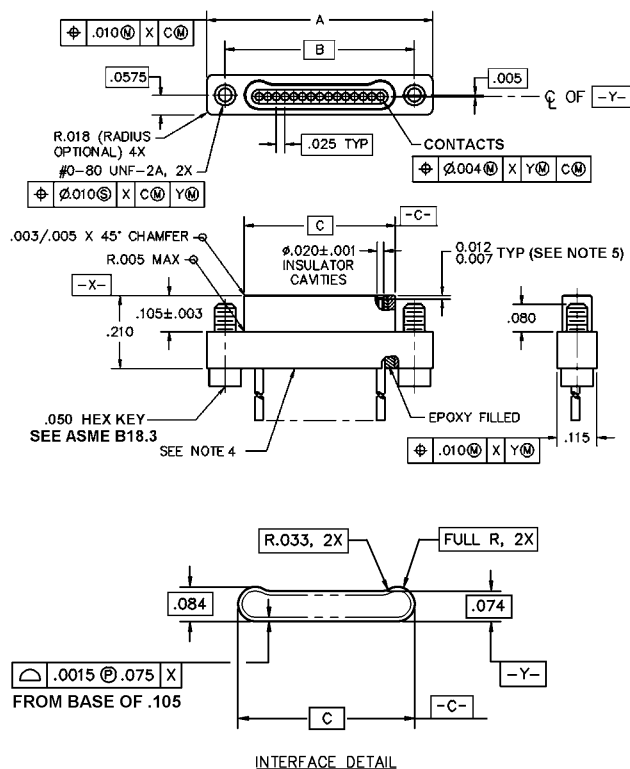
Single Row Metal Shell Pigtails (M32139/01 & /02)

Dimensions

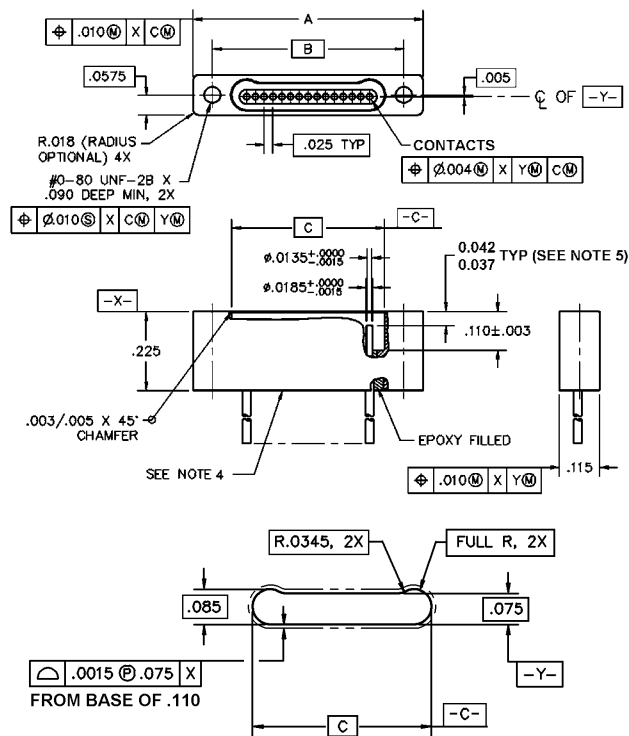


M32139/01 and /02 Single Row Dimensions

M32139/01 Pin Connectors



M32139/02 Socket Connectors



| Insert Arrangement | Layout | A | B BSC | C BSC |
|--------------------|--------|---------------|----------------|---------------|
| A | 9P | .500 (12.70) | .395 (10.03) | .284 (7.21) |
| B | 15P | .650 (16.51) | .545 (13.84) | .434 (11.02) |
| C | 21P | .800 (20.32) | .695 (17.65) | .584 (14.83) |
| D | 25P | .900 (22.86) | .795 (20.19) | .684 (17.37) |
| E | 31P | 1.050 (26.67) | .945 (24.00) | .834 (21.18) |
| F | 37P | 1.200 (30.48) | 1.095 (27.814) | .984 (24.99) |
| G | 51P | 1.550 (39.37) | 1.445 (36.70) | 1.334 (33.88) |

| Insert Arrangement | Layout | A | B BSC | C BSC |
|--------------------|--------|---------------|----------------|---------------|
| A | 9P | .500 (12.70) | .395 (10.03) | .285 (7.24) |
| B | 15P | .650 (16.51) | .545 (13.84) | .435 (11.05) |
| C | 21P | .800 (20.32) | .695 (17.65) | .585 (14.86) |
| D | 25P | .900 (22.86) | .795 (20.19) | .685 (17.40) |
| E | 31P | 1.050 (26.67) | .945 (24.00) | .835 (21.21) |
| F | 37P | 1.200 (30.48) | 1.095 (27.814) | .985 (25.02) |
| G | 51P | 1.550 (39.37) | 1.445 (36.70) | 1.335 (33.91) |