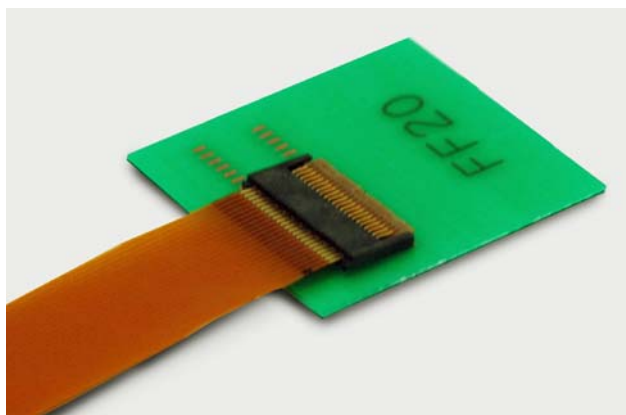


0.3 mm Pitch Ultra Low Profile FPC Back Lock Connector

FF20 Series



OUTLINE

FF20 series is 0.3mm pitch, depth 3.80mm, and 0.66mm connector height. Ultra low profile FPC connector.

FEATURE

- DDK's original rotate oval cam lock mechanism; "Back-lock" system ensure the reliable connection.
- Contact position is upper contact.
- Back-lock structure enables to retain FPC against pulling upward direction.
- Connectors deliver with the lock lever opened. Time saving for FPC inserting operation.

Please do not close a lock lever without inserting FPC.

APPLICATIONS

Mobile Phone, Portable PC, PDA and other Portable Device

SPECIFICATIONS

Rated Voltage	50V AC(r.m.s.)
Rated Current	0.2A / Contact
Dielectric Withstanding Voltage	200V AC (r.m.s.) / 1 minute
Insulation Resistance	50 M Ω (min.) at 250V DC
Contact Resistance	50m Ω (max.)

MATERIAL//FINISH

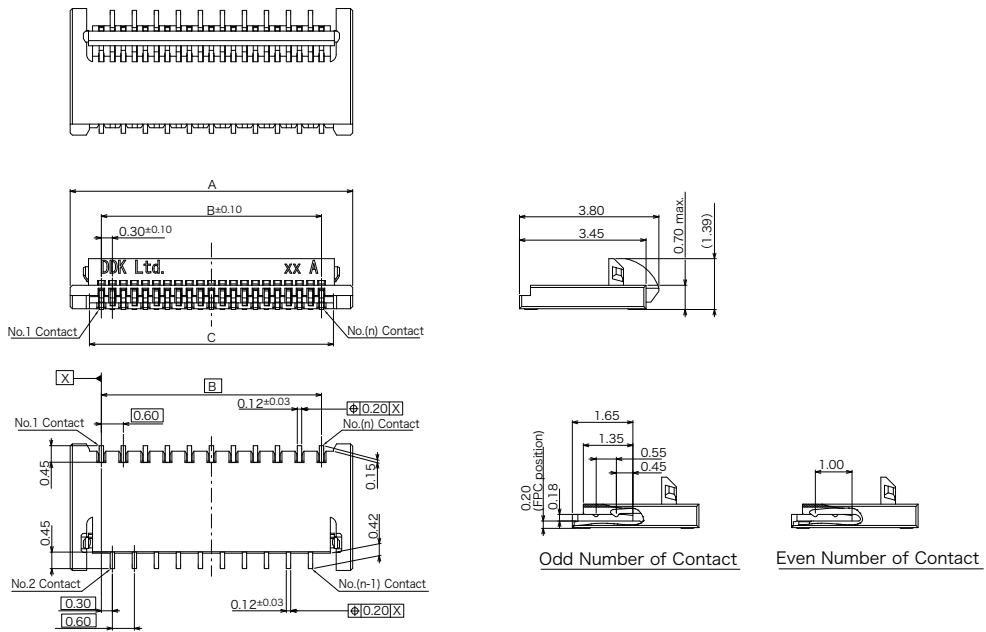
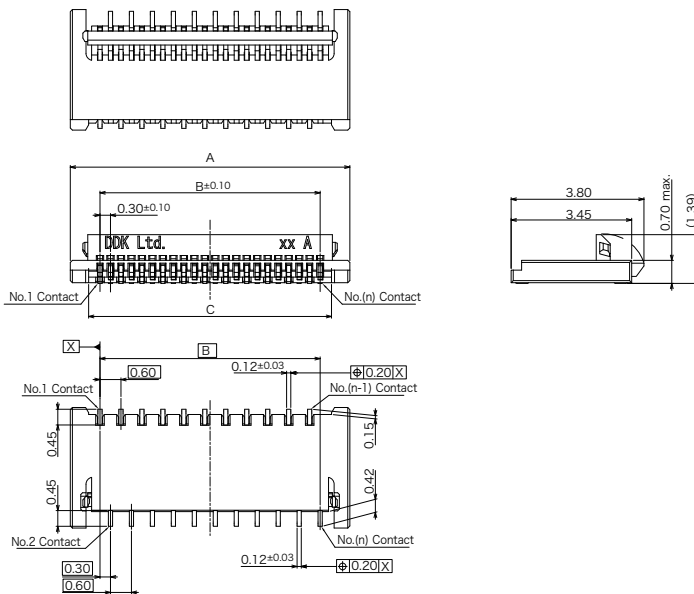


Item	Material / Finish
Contact	Copper Alloy / Au(Flash) over Ni Plating
Housing	LCP Resin (UL94V-0) / Black
Lock Lever	PPS Resin (UL94V-0) / Brown

© Specifications and/or dimensions in this catalogue are subject to change without notice.
Your catalogue checking the latest specifications with our drawings would be highly appreciated.

Ultra Low Profile Back Lock Connector
Part Number FF20- □□ A-R11A
 ① ② ③ ④ ⑤ ⑥ ⑦

① Series	FF20
② Number of Contact	Please refer to table-1
③ Contact Position	A : Upper Contact
④ Contact Style	R : Right Angle
⑤ Contact Tail Length	1 : 0.45mm
⑥ Contact Plating	1 : Au (Flash) over Ni Plating
⑦ Lock Lever Style	A : Standard

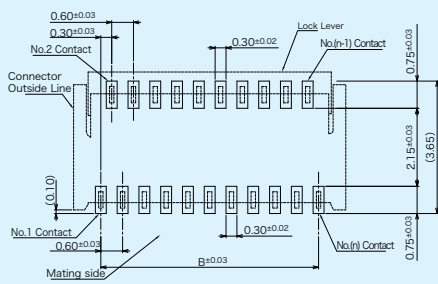
Odd Number of Contact

Even Number of Contact


© Specifications and/or dimensions in this catalogue are subject to change without notice.
 Your catalogue checking the latest specifications with our drawings would be highly appreciated.

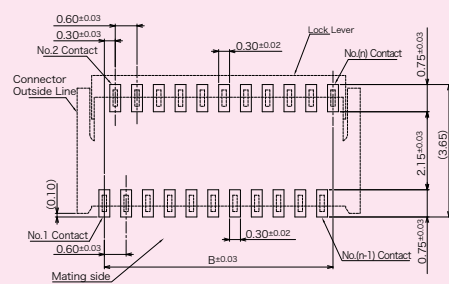
Ultra Low Profile Back Lock Connector

Odd Number of Contact

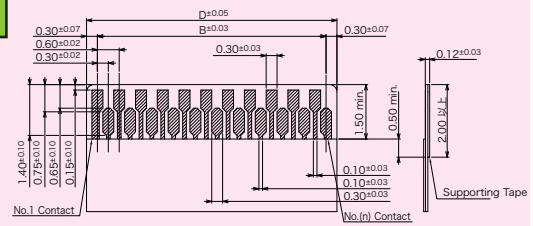
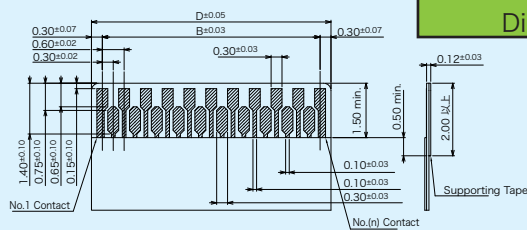
Even Number of Contact



**Recommended PCB
Mounting Dimensions**



**Recommended FPC
Dimensions**


Table-1

* Regarding the number of contact, please contact our sales.

Part Number	Number of Contact	A	B	C	D
FF20-8A-R11A	8	3.80	2.10	2.75	2.70
FF20-9A-R11A	9	4.10	2.40	3.05	3.00
FF20-10A-R11A	10	4.40	2.70	3.35	3.30
FF20-11A-R11A	11	4.70	3.00	3.65	3.60
FF20-12A-R11A	12	5.00	3.30	3.95	3.90
FF20-13A-R11A	13	5.30	3.60	4.25	4.20
FF20-14A-R11A	14	5.60	3.90	4.55	4.50
FF20-15A-R11A	15	5.90	4.20	4.85	4.80
FF20-16A-R11A	16	6.20	4.50	5.15	5.10
FF20-17A-R11A	17	6.50	4.80	5.45	5.40
FF20-18A-R11A	18	6.80	5.10	5.75	5.70
FF20-19A-R11A	19	7.10	5.40	6.05	6.00
FF20-20A-R11A	20	7.40	5.70	6.35	6.30
FF20-21A-R11A	21	7.70	6.00	6.65	6.60
FF20-22A-R11A	22	8.00	6.30	6.95	6.90
FF20-23A-R11A	23	8.30	6.60	7.25	7.20
FF20-24A-R11A	24	8.60	6.90	7.55	7.50
FF20-25A-R11A	25	8.90	7.20	7.85	7.80
FF20-26A-R11A	26	9.20	7.50	8.15	8.10
FF20-27A-R11A	27	9.50	7.80	8.45	8.40
FF20-28A-R11A	28	9.80	8.10	8.75	8.70
FF20-29A-R11A	29	10.10	8.40	9.05	9.00
FF20-30A-R11A	30	10.40	8.70	9.35	9.30
FF20-31A-R11A	31	10.70	9.00	9.65	9.60
FF20-32A-R11A	32	11.00	9.30	9.95	9.90
FF20-33A-R11A	33	11.30	9.60	10.25	10.20
FF20-34A-R11A	34	11.60	9.90	10.55	10.50
FF20-35A-R11A	35	11.90	10.20	10.85	10.80
FF20-36A-R11A	36	12.20	10.50	11.15	11.10
FF20-37A-R11A	37	12.50	10.80	11.45	11.40
FF20-38A-R11A	38	12.80	11.10	11.75	11.70
FF20-39A-R11A	39	13.10	11.40	12.05	12.00
FF20-40A-R11A	40	13.40	11.70	12.35	12.30

© Specifications and/or dimensions in this catalogue are subject to change without notice.

Your catalogue checking the latest specifications with our drawings would be highly appreciated.