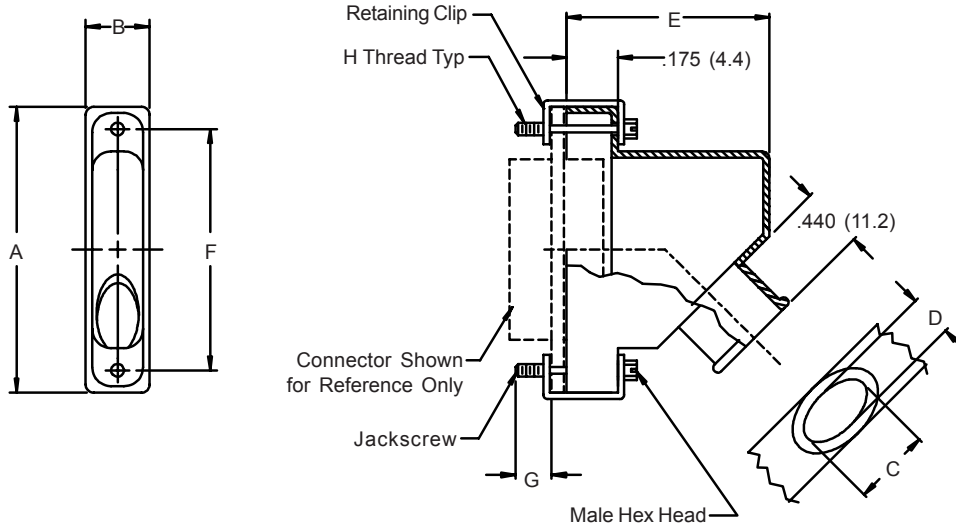


**507-171**  
**EMI/RFI Micro-D 45° Banding Backshell Assembly**  
**with Elliptical Banding Porch**



| HOW TO ORDER                                   |                          |                      |  |  |
|--|--------------------------|----------------------|--|--|
| Series-Basic Part Number                       | Finish Symbol (Table II) | Shell Size (Table I) | Banding  | Jackpost/ Jackscrew*   |
| 507-171  |                          | 09                   | B – Band Supplied (600-052)<br><br>Omit for No Band Supplied | B – 2 Male Fillister Heads<br>H – 2 Male Hex Sockets<br>F – 2 Female Jackposts<br>FB – 1 Female Jackpost, and 1 Male Fillister head<br>FH – 1 Female Jackpost, and 1 Male Hex Socket<br>W-2 – Male External Hex Head |
|  |                          | 15                   |  |  |
|  |                          | 21                   |  |  |
|  |                          | 25                   |  |  |
|  |                          | 31                   |  |  |
|  |                          | 37                   |  |  |
|  |                          | 51                   |  |  |
|  |                          | 100                  |  |  |
| <b>Sample Part Number:</b>                     |                          |                      |  |  |
| 507-171  | M                        | 21                   | — B  | H  |
| <b>* SEE PAGE C-4 FOR COMPLETE INFORMATION</b> |                          |                      |  |  |

**NOTES:**

1. Metric dimensions (mm) are indicated in parentheses.
2. Jackscrew & Jackpost to float, allowing Connector to engage prior to Jackscrew.
3. Use Glenair 600-057 Band and 600-061 Tool.

**507-171**  
**EMI/RFI Micro-D 45° Banding Backshell Assembly**  
**with Elliptical Banding Porch**



MIL-DTL-83513  
Micro-D

**TABLE I: SHELL SIZE, CABLE ENTRY, BACKSHELL & CONNECTOR INTERFACE DIMENSIONS**

| Shell Size | A Dim        | B Dim       | C Dia       | D Dia      | E Dim        | F Dim        | G          | H Thread    |
|------------|--------------|-------------|-------------|------------|--------------|--------------|------------|-------------|
| 09         | .775 (19.7)  | .340 (8.6)  | .320 (8.1)  | .156 (4.0) | .840 (21.3)  | .565 (14.5)  | .154 (3.9) | 2-56 UNC-2A |
| 15         | .925 (23.5)  | .340 (8.6)  | .384 (9.8)  | .188 (4.8) | .890 (22.6)  | .715 (18.2)  | .154 (3.9) | 2-56 UNC-2A |
| 21         | 1.075 (27.3) | .340 (8.6)  | .448 (11.4) | .219 (5.6) | .930 (23.6)  | .865 (22.0)  | .154 (3.9) | 2-56 UNC-2A |
| 25         | 1.175 (29.4) | .340 (8.6)  | .508 (12.9) | .250 (6.4) | .980 (24.9)  | .965 (24.5)  | .154 (3.9) | 2-56 UNC-2A |
| 31         | 1.325 (33.7) | .340 (8.6)  | .542 (13.8) | .265 (6.7) | 1.000 (25.4) | 1.115 (28.3) | .154 (3.9) | 2-56 UNC-2A |
| 37         | 1.475 (37.5) | .340 (8.6)  | .572 (14.2) | .281 (7.1) | 1.020 (25.9) | 1.265 (32.1) | .154 (3.9) | 2-56 UNC-2A |
| 51         | 1.425 (36.2) | .380 (9.7)  | .638 (16.2) | .312 (7.9) | 1.070 (27.2) | 1.215 (30.9) | .154 (3.9) | 2-56 UNC-2A |
| 100        | 2.160 (54.9) | .430 (10.9) | .766 (19.5) | .375 (9.5) | 1.160 (29.5) | 1.800 (45.7) | .194 (4.9) | 4-40 UNC-2A |

**TABLE III:  
FINISH OPTIONS**

| Symbol | Finish  |
|--------|---|
| B      | Cadmium Plate/Olive Drab                                |
| C*     | Black Anodize   |
| G*     | Anodic Hard Coat  |
| J      | Gold Iridite over Cadmium Plate over Electroless Nickel |
| LF     | Cadmium Plate/Bright over Electroless Nickel            |
| M      | Electroless Nickel                                      |
| N      | Cadmium Plate/Olive Drab over Electroless Nickel        |
| NC     | Zinc Cobalt/Dark Olive Drab                             |
| NF     | Cadmium Plate/Olive Drab over Electroless Nickel        |
| T      | Cadmium Plate/Bright over Electroless Nickel            |
| U**    | Cadmium Plate/Black                                     |
| ZN     | Zinc-Nickel Alloy/Olive Drab                            |

\*Anodize finish is not suitable for EMI shielding or grounding applications.

\*\*Applicable to corrosion resisting steel backshells and accessories. Consult factory for other available finishes.

Metric dimensions (mm) are indicated in parentheses