

# Lone Wolf

## Normally open proportional solenoid valve

---

### FEATURES

- 2-way normally open
- Achieves rapid, stable performance
- Enhances system control and patient comfort
- Maintains ideal flow through normally open valve with thermal compensation
- Extremely reliable



### MEDIA COMPATIBILITY

Air, nitrogen, oxygen & others

### ELECTRICAL

Power	0.5, 1.0 or 2.0 W
Voltage	3 to 60 V <sub>DC</sub>
Electrical terminal	PC mount, 18" wire leads

### PHYSICAL PROPERTIES

Operating environment	0 to 50 °C
Storage temperature	-40 to 70 °C
Length	45.3 mm (1.785 in)
Width	16.5 mm (0.625 in)
Height	17 mm (0.67 in)
Porting	manifold mount with 43 µm screens, 1/8" barbs, 5/64" barbs
Weight	63 g (2.2 oz)
Internal volume	0.508 cm <sup>3</sup> (0.031 in <sup>3</sup> )
Filtration (recommended)	40 µm
Lubrication	None required

# Lone Wolf

## Normally open proportional solenoid valve

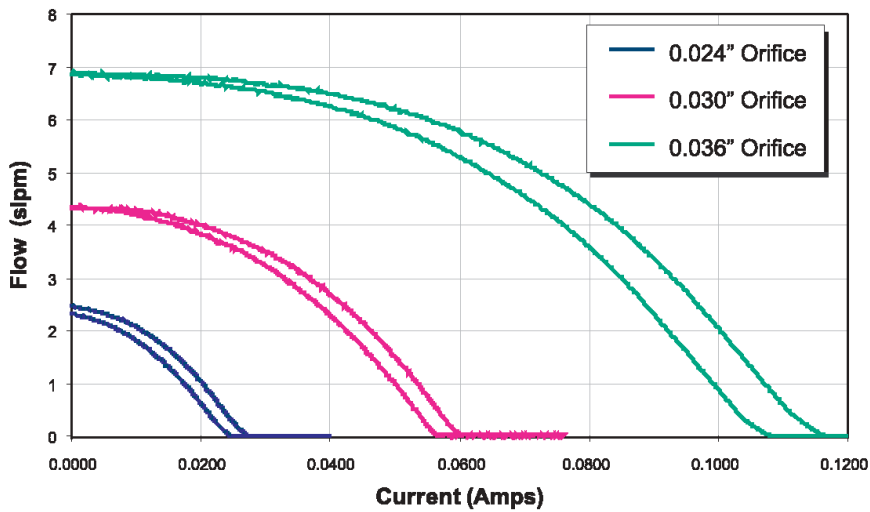
---

### PERFORMANCE CHARACTERISTICS

Part no.	Pressure	Vacuum	Orifice sizes	Leak rate <sup>1</sup>	Response
LW1...	0..10 psi	0...20 "Hg (0...10 psi)	0.024" (0.610 mm)	Internal: 0.2 sccm (bubble tight)  External: 0.016 sccm	<30 msec cycling (2 W)
LW2...	0...20 psi		0.030" (0.762 mm)		
LW3...	0...25 psi		0.036" (0.914 mm)		

### FLOW CURVE<sup>2</sup>

**Lone Wolf Typical Air Flow  
5 psid**



**Notes:**

<sup>1</sup> sccm denotes Standard Cubic Centimeters per Minute. It is a unit for the flow rate at standard conditions of temperature and pressure. 1000 sccm = 1 slpm.

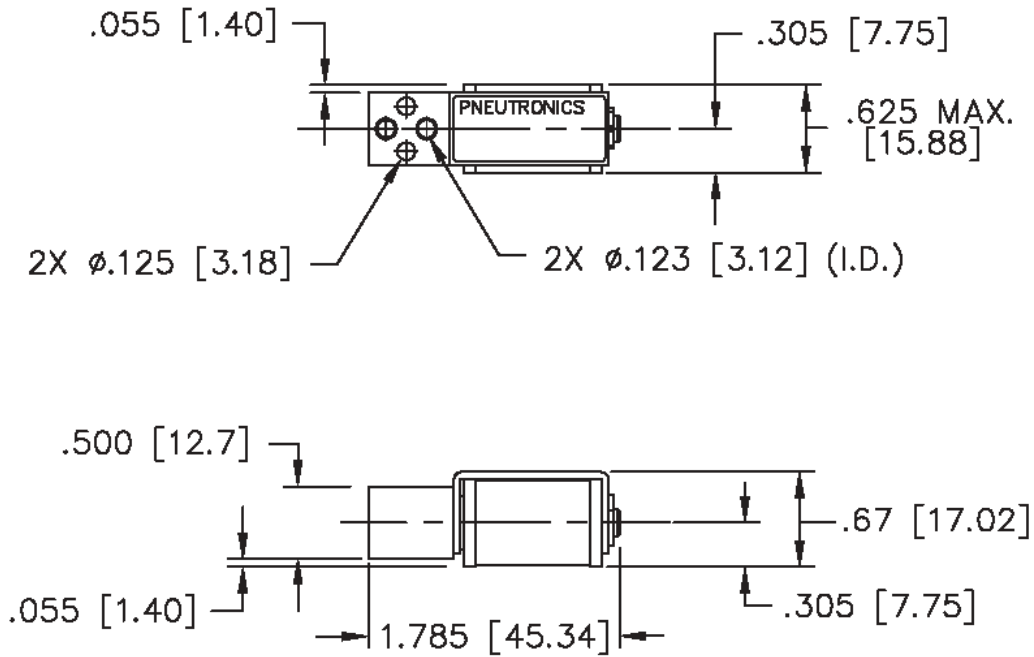
<sup>2</sup> slpm denotes Standard Liters per Minute. It is a unit for the flow rate at standard conditions of temperature and pressure. 1 slpm = 1000 sccm.

# Lone Wolf

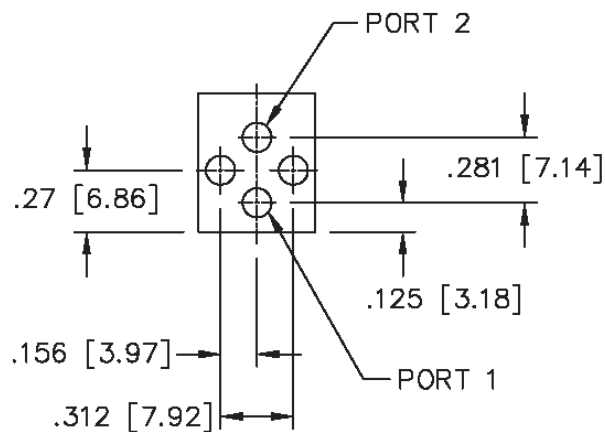
## Normally open proportional solenoid valve

### OUTLINE DRAWING

#### Basic valve dimensions



#### Port and mounting hole diagrams

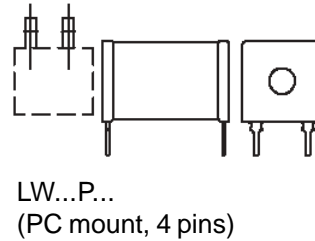
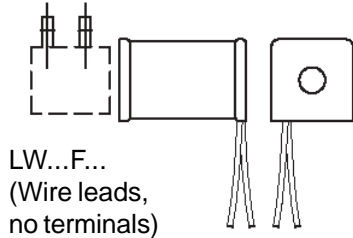


dimensions in inches (mm)

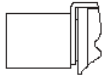
# Lone Wolf

## Normally open proportional solenoid valve

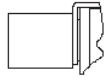
### ELECTRICAL INTERFACE OPTIONS



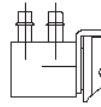
### PNEUMATIC INTERFACE OPTIONS



LW...0  
(No barbs,  
face seal to manifold)



LW...1  
(No barbs,  
face seal to manifold  
with screen)



LW...8  
(0.125" barbs, 1/8" I.D.  
tubing, 1/4" O.D. max)

### ORDERING INFORMATION

Standard	Model no.				Material	Elastomer	Coil selection	Electrical interface	Pneumatic interface	
	Options	LW	1: Max. pressure	2: Orifice						3: Coil Wattage
		1:	10 psi	0.024" (0.610 mm)	0.5 W	B: Brass	V: FKM	A: 11 Ω	F: wire leads, 18-19"	0: manifold mount
		2:	20 psi	0.030" (0.762 mm)	1 W			B: 23 Ω		
		3:	25 psi	0.036" (0.914 mm)	2 W			C: 47 Ω	P: PC board mount, 4 PC pins	1: manifold mount with screens*
								D: 68 Ω		8: 1/8" barbs
								F: 274 Ω		
* this option will affect price										
Example:	LW	1			B	V	A	F		8

**Note: Not all combinations might be available.  
Please contact your nearest Sensortechincs sales representative for further information.**

Sensortechincs reserves the right to make changes to any products herein. Sensortechincs does not assume any liability arising out of the application or use of any product or circuit described herein, neither does it convey any license under its patent rights nor the rights of others.