

1. PART NO. EXPRESSION :

RCC1006100MZ F
 (a) (b) (c) (d)(e)(f)

(a) Series code

(b) Dimension code

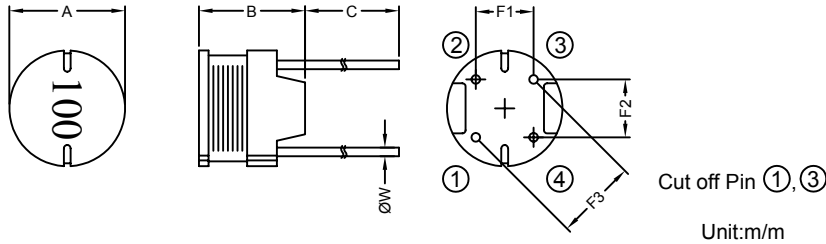
(c) Inductance code : 100 = 10uH

(d) Tolerance code : K = ±10%, M = ±20%

(e) X, Y, Z : Standard part

(f) F : Lead Free

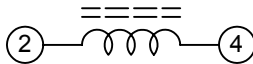
2. CONFIGURATION & DIMENSIONS :



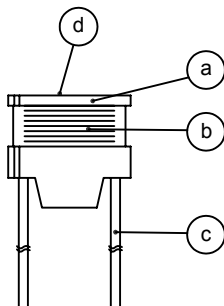
Unit:m/m

A	B	C	F1	F2	F3	ØW
10.0±0.5	6.0±0.5	15.0±3.0	4.0±0.5	5.0±0.5	6.4±0.5	0.65±0.10

3. SCHEMATIC :



4. MATERIALS :



(a) Core : DR Ferrite Core

(b) Wire : Enamelled Copper Wire

(c) Lead : Tinned Copper Wire

(d) Ink : Bon Margue

5. GENERAL SPECIFICATION :

- a) The inductance drop at rated is 10% max.
- b) Temp. rise : 40°C max. at rated current
- c) Storage temp. : -40°C to +125°C
- d) Operating temp. : -40°C to +85°C



RoHS Compliant

NOTE : Specifications subject to change without notice. Please check our website for latest information.

01.07.2008

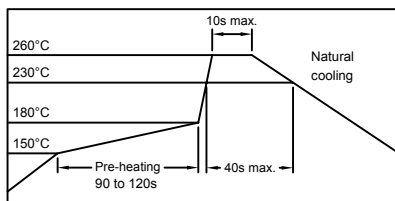


SUPERWORLD ELECTRONICS (S) PTE LTD

6. ELECTRICAL CHARACTERISTICS :

Part No.	Inductance (μ H)	Test Frequency (Hz)	RDC (Ω) Max.	IDC (A) Max.
RCC1006100MZF	10 \pm 20%	2.52M	0.040	3.60
RCC1006120MZF	12 \pm 20%	2.52M	0.044	3.30
RCC1006150MZF	15 \pm 20%	2.52M	0.058	2.90
RCC1006180MZF	18 \pm 20%	2.52M	0.064	2.70
RCC1006220MZF	22 \pm 20%	2.52M	0.088	2.40
RCC1006270MZF	27 \pm 20%	2.52M	0.100	2.20
RCC1006330KZF	33 \pm 10%	2.52M	0.110	2.00
RCC1006390KZF	39 \pm 10%	2.52M	0.140	1.80
RCC1006470KZF	47 \pm 10%	2.52M	0.160	1.70
RCC1006560KZF	56 \pm 10%	2.52M	0.190	1.50
RCC1006680KZF	68 \pm 10%	2.52M	0.220	1.40
RCC1006820KZF	82 \pm 10%	2.52M	0.290	1.30
RCC1006101KZF	100 \pm 10%	1K	0.320	1.30
RCC1006121KZF	120 \pm 10%	1K	0.380	1.20
RCC1006151KZF	150 \pm 10%	1K	0.500	1.00
RCC1006181KZF	180 \pm 10%	1K	0.560	0.84
RCC1006221KZF	220 \pm 10%	1K	0.780	0.76
RCC1006271KZF	270 \pm 10%	1K	0.920	0.69
RCC1006331KZF	330 \pm 10%	1K	1.100	0.62
RCC1006391KZF	390 \pm 10%	1K	1.300	0.57
RCC1006471KZF	470 \pm 10%	1K	1.500	0.52
RCC1006561KZF	560 \pm 10%	1K	1.900	0.48
RCC1006681KZF	680 \pm 10%	1K	2.200	0.43
RCC1006821KZF	820 \pm 10%	1K	2.600	0.40
RCC1006102KZF	1000 \pm 10%	1K	3.200	0.36

RECOMMENDED SOLDERING CONDITIONS REFLOW SOLDERINGS



RoHS Compliant

NOTE : Specifications subject to change without notice. Please check our website for latest information.

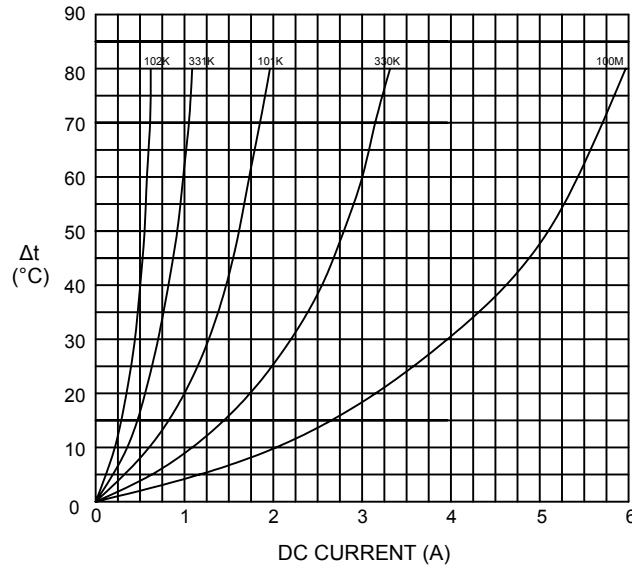
01.07.2008



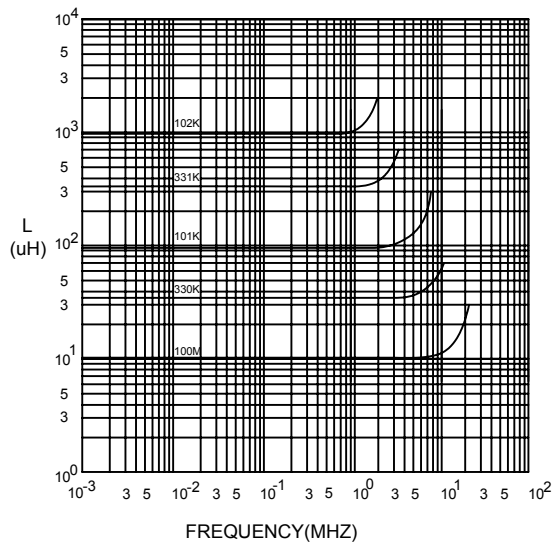
SUPERWORLD ELECTRONICS (S) PTE LTD

7. CHARACTERISTICS CURVES :

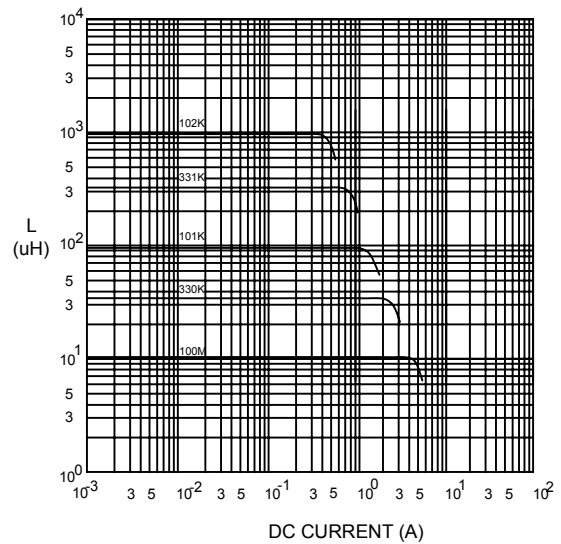
@ TEMP. RISE VS. DC SUPERPOSITION RESPONSE CURVE



@ INDUCTANCE VS. FREQUENCY RESPONSE CURVE



@ INDUCTANCE VS. DC SUPERPOSITION RESPONSE CURVE



NOTE : Specifications subject to change without notice. Please check our website for latest information.



RoHS Compliant

01.07.2008



SUPERWORLD ELECTRONICS (S) PTE LTD

8. PACKAGING INFORMATION :

Size	RCC1006
Inner Package	Box (small)
Quantity	200 pcs

9. UL CARD :

OBMW2		November 30, 2000		
Magnet Wire - Component				
PACIFIC ELECTRIC WIRE & CABLE (SHENZHEN) CO LTD				E201757
607 BAOLONG INDUSTRIAL ESTATE LONGGANG, SHENZHEN				
GUANGDONG CHINA				
		Coating Type	ANSI	
Mtl Dsg	BC	TC	Type	TI
UEW/U	Polyurethane	—	—	130
PEW/U	Polyester	—	MW5-C	155°C
PEWH/U	Modified Polyester	—	MW30-C	180
PEW-NY/U	Polyester	Polyamide	MW24-C	155
HAI/U	Polyester(Amide)(Imide)	Polyamideimide	MW35,73	200
UEW-NY/U	Polyurethane	Polyamide	MW80-C	155
			MW28-C	130
 Marking: Company name and material designation or marked designation on package or reel, and Recognized Component Mark.				
<hr/>				
See General Information Preceding These Recognitions				
1/3/2001	Underwriters Laboratories Inc.			Card 1 of 2



RoHS Compliant

NOTE : Specifications subject to change without notice. Please check our website for latest information.

01.07.2008



SUPERWORLD ELECTRONICS (S) PTE LTD