

### 1. PART NO. EXPRESSION :

R C B 1 8 2 3 1 0 0 M Z F  
 (a) (b) (c) (d)(e)(f)

(a) Series code

(d) Tolerance code : K =  $\pm 10\%$ , M =  $\pm 20\%$

(b) Dimension code

(e) X, Y, Z : Standard part

(c) Inductance code : 100 = 10uH

(f) F : Lead Free

### 2. CONFIGURATION & DIMENSIONS :

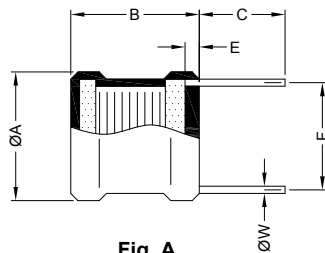


Fig. A

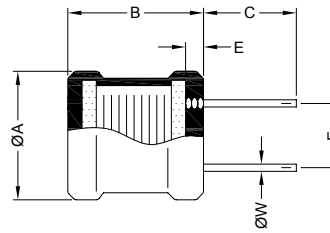
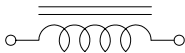


Fig. B

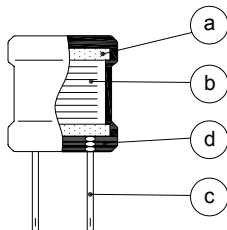
Unit:m/m

ØA	B	C	E
18.0 Max.	23.0 Max.	15.0 $\pm$ 5.0	3.0 Max.

### 3. SCHEMATIC :



### 4. MATERIALS :



(a) Core : DR Ferrite Core

(b) Wire : Enamelled Copper Wire

(c) Lead : Tinned Copper Wire

(d) Tube : Shrinkable Tube

### 5. GENERAL SPECIFICATION :

- a) The inductance drop at rated current is 10% max.
- b) Temp. rise : 45°C max. at rated current
- c) Storage temp. : -40°C to +125°C
- d) Operating temp. : -25°C to +80°C



**RoHS Compliant**

NOTE : Specifications subject to change without notice. Please check our website for latest information.

25.04.2008

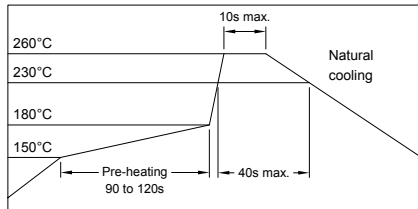


**SUPERWORLD ELECTRONICS (S) PTE LTD**

### 6. ELECTRICAL CHARACTERISTICS :

Part No.	Inductance ( $\mu\text{H}$ )	Test Frequency (Hz)	RDC ( $\Omega$ ) Max.	IDC (A) Max.	Dimensions		Fig.
					F m/m	W m/m	
RCB1823100MZP	10 $\pm$ 20%	1V / 1K	0.009	8.0	14.0	1.2	A
RCB1823250KZF	25 $\pm$ 10%	1V / 1K	0.022	6.0	14.0	1.0	A
RCB1823500KZF	50 $\pm$ 10%	1V / 1K	0.036	4.0	14.0	1.0	A
RCB1823101KZF	100 $\pm$ 10%	1V / 1K	0.090	3.0	9.0	1.0	B
RCB1823251KZF	250 $\pm$ 10%	1V / 1K	0.150	2.0	9.0	1.0	B
RCB1823501KZF	500 $\pm$ 10%	1V / 1K	0.300	1.2	9.0	1.0	B
RCB1823102KZF	1000 $\pm$ 10%	1V / 1K	0.600	1.0	9.0	1.0	B

### RECOMMENDED SOLDERING CONDITIONS REFLOW SOLDERINGS



**RoHS Compliant**

NOTE : Specifications subject to change without notice. Please check our website for latest information.

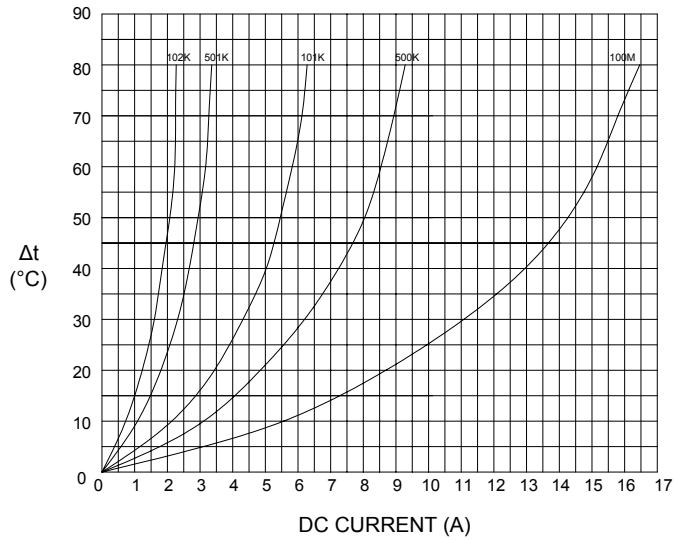
25.04.2008



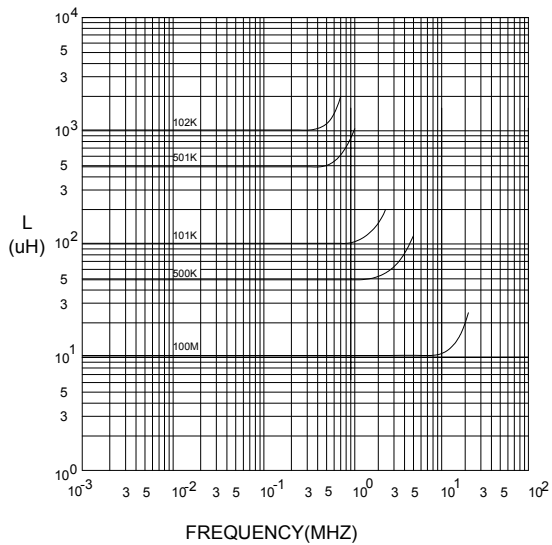
**SUPERWORLD ELECTRONICS (S) PTE LTD**

## 7. CHARACTERISTICS CURVES :

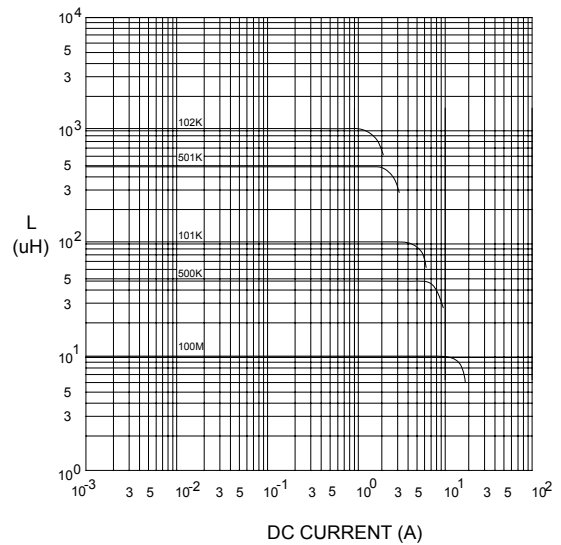
@ TEMP. RISE VS. DC SUPERPOSITION RESPONSE CURVE



@ INDUCTANCE VS. FREQUENCY RESPONSE CURVE



@ INDUCTANCE VS. DC SUPERPOSITION RESPONSE CURVE



**RoHS Compliant**

NOTE : Specifications subject to change without notice. Please check our website for latest information.

25.04.2008



**SUPERWORLD ELECTRONICS (S) PTE LTD**

# RADIAL CHOKE COIL

RCB1823 SERIES

8. UL CARD :

**OBMW2** **November 30, 2000**  
**Magnet Wire - Component**

**PACIFIC ELECTRIC WIRE & CABLE (SHENZHEN) CO LTD** **E201757**  
**607 BAOLONG INDUSTRIAL ESTATE LONGGANG, SHENZHEN**  
**GUANGDONG CHINA**

Mtl Dsg	Coating Type	TC	ANSI Type	TI
UEW/U	BC Polyurethane	—	—	130
PEW/U	Polyester	—	MW5-C	155°C
PEWH/U	Modified Polyester	—	MW30-C	180
PEW-NY/U	Polyester	Polyamide	MW24-C	155
HAI/U	Polyester(Amide)(Imide)	Polyamideimide	MW35,73	200
UEW-NY/U	Polyurethane	Polyamide	MW80-C	155
			MW28-C	130

**Marking: Company name and material designation or marked designation on package or reel, and Recognized Component Mark.**

**See General Information Preceding These Recognitions**

1/3/2001 **Underwriters Laboratories Inc.** **Card 1 of 2**

**YDPU8** **August 18, 1999**  
**Tubing Extruded Insulating Certified For Canada - Component**

**SHENZHEN CHANGBAO SPECIAL PLASTIC PRODUCTS CO LTD** **E180908**  
**SHENZHEN SCIENCE & INDUSTRY PARK NAN SHAN**  
**SHENZHEN, GUANGDONG 518057 CHINA**

Cat. No.	Max V	Max Temp C	Col. Recognized	Max Temp Rated Oil Resistance *C	OFT Rated #
<b>Polyolefin heat shrinkable tubing.</b>					
Changbao 102	600	125	All	—	Yes

**#Tubing is considered to comply with the optional OFT flammability requirements only if it is so marked.**

**Marking: Company name, catalog number and temperature rating in degrees C appears on tubing, tags attached to both ends of the tubing or on the shipping spool label or smallest unit container and the Recognized Component Mark for Canada .**

**See General Information Preceding These Recognitions**  
**For use only in equipment where the acceptability of the combination is determined by Underwriters Laboratories Inc.**

8/31/1999 **Underwriters Laboratories Inc.** **Card 1 of 1**



**RoHS Compliant**

NOTE : Specifications subject to change without notice. Please check our website for latest information.

25.04.2008



**SUPERWORLD ELECTRONICS (S) PTE LTD**