

P-tec Corp. Tel:(800)688-0613  
 2405 Commerce Circle Tel:(719) 589 3122  
 Alamosa Co. 81101 Fax:(719) 589 3592  
 www.p-tec.net sales@p-tec.net



## PL00295 Series SMD LED Bi-Color Right Angle 1104 Package

### Features

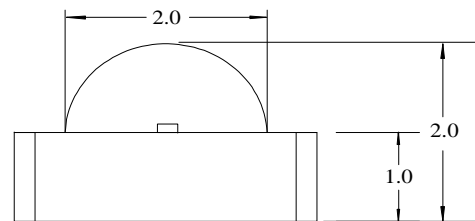
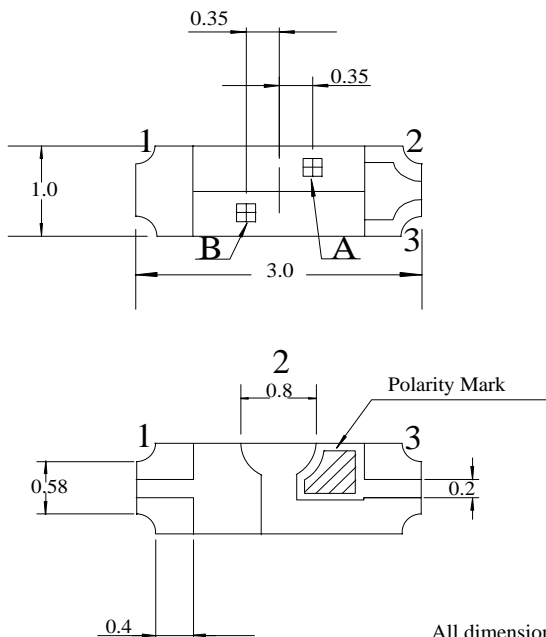
- \*Oval Lens Side View Package 3.0 x 2.0 x 1.0mm
- \*AlGaInP Ultra Bright Red and Green Chip used
- \*Low Current Requirements
- \*High Light Output
- \*Compatible with IR Solder-Process
- \*Industry Standard Footprint
- \*2000 or 1000 pcs per Reel
- \*RoHS Compliant

### Absolute Maximum Ratings at T<sub>A</sub> = 25°C

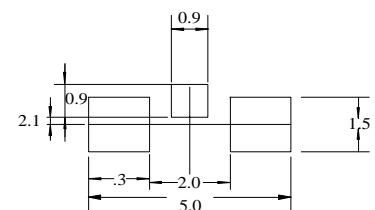
Power Dissipation (Red).....	72mW
Power Dissipation (Green).....	78mW
Reverse Voltage (<10μA).....	5.0V
Max Forward Current.....	30mA
Peak Forward Current (Red) (1/10 Duty Cycle, 0.1ms Pulse Width) .....	150mA
Peak Forward Current (Green) (1/10 Duty Cycle, 0.1ms Pulse Width) .....	100mA
Operating Temperature Range.....	-40°C to + 85°C
Storage Temperature Range.....	-40°C to + 85°C
Reflow Soldering Temperature.....	260°C for 10 seconds

### Electrical & Optical Characteristics at T<sub>A</sub> = 25°C

Part Number	Emitting Color	Chip Material	Dominant Wave Length	Peak Wave Length	Viewing Angle 2θ ½	Forward Voltage @20mA (V)		Luminous Intensity @20mA (mcd)	
						Typ	Max	Min	Typ
Water Clear Lens			nm	nm	Deg				
PL00295-WCRG2617	Red Yellow Green	AlGaInP AlGaInP	630	650	120°	2.1	2.6	35.0	70.0
			570	574		2.0	2.4	35.0	70.0



### Recommended Solder Pad Layout



All dimensions are in **Millimeters**.  
 Tolerance is ± 0.25mm unless otherwise specified.