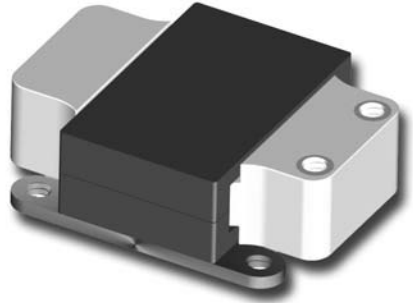


HPC SERIES

Features

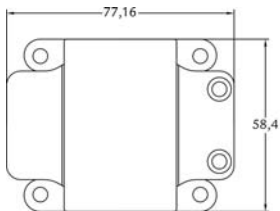
- High power planar chokes for HV applications
- According AEC-Q200.
- High power management.
- Very good inductance stability vs temperature
- Operating frequencies up to 150kHz.
- Skin and proximity effects reduced.
- Storage temperature from -50°C to 175°C
- Operating temperature from -40°C to 90°C with heat sink dissipation (effective temperature up to 125°C)
- Power module-like assembly.
- Threaded output terminals.
- Very low profile.
- Improved room area less than 80 sq cm.



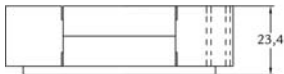
Electrical specifications

| Part Number | Inductance ±25% | I _{rms} (A) | I _{peak} (A) | Ripple (App) | Ripple freq (kHz) | Losses (W) |
|-------------|--------------------|----------------------|-----------------------|-----------------|----------------------|---------------|
| HPC-001 | 4μH | 120 | 132 | 24 | 80 | 18 |
| HPC-002 | 2,5μH | 165 | 180 | 30 | 200 | 9 |

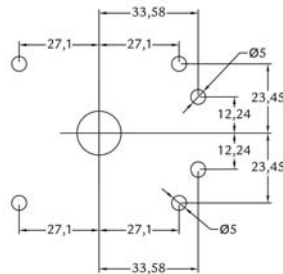
Dimensions



TOP VIEW



SIDE VIEW



TOP VIEW / SCREW POSITION

Electrical Schematics

