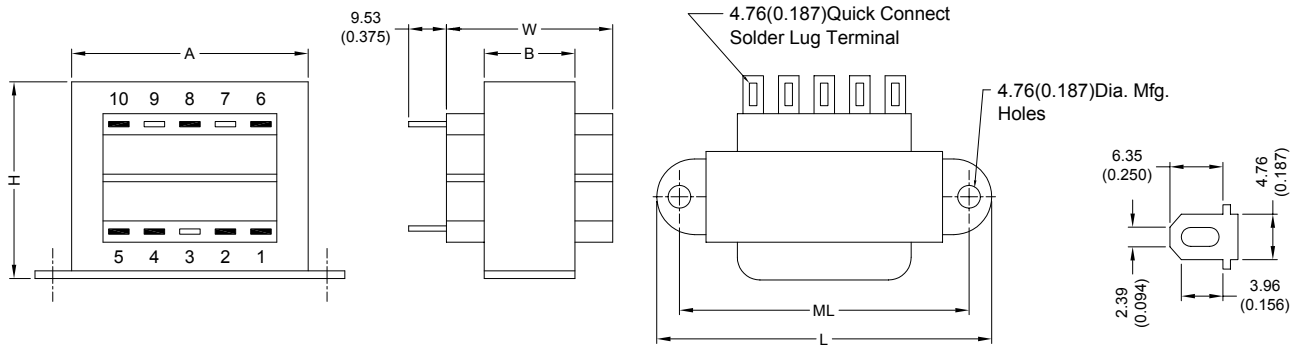


POWER TRANSFORMER

DCS6-16 (F) SERIES

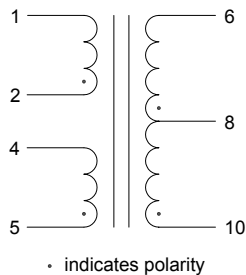
1. CONFIGURATION & DIMENSIONS :



UNIT : mm (inch)

SIZE	VA	L	W	H	A	B	ML	gram
6	30	82.55 (3.250)	42.88 (1.688)	49.23 (1.938)	74.63 (2.938)	27.00 (1.063)	71.45 (2.813)	498.95

2. SCHEMATIC :



3. ELECTRICAL CHARACTERISTICS (@ 25°C) :

- | | |
|--------------------------------------|------------------------------|
| a. Primary Voltage | AC 115/230 V 50/60 Hz . |
| b. No Load Primary Current | Less Than 35mA / 55mA . |
| c. Secondary Voltage (±5%) | |
| Pin 6-10 C.T. Pin 8 | AC 19.00 V / 19.00 V . |
| d. Secondary Load Current | 2.00A . |
| e. Full Load Primary Current | Less Than 340mA / 200mA . |
| f. Full Load Secondary Voltage (±5%) | 16.00V / 16.00V . |
| Pin 6-10 C.T. Pin 8 | |
| g. DC Resistance | |
| Pin 1-2 | Primary-1 = 41.20 Ohm . |
| Pin 4-5 | Primary-2 = 47.90 Ohm . |
| Pin 6-8 | Secondary-1 = 0.27 Ohm . |
| Pin 8-10 | Secondary-2 = 0.32 Ohm . |
| h. Insulation Resistance | DC 500V 100Meg Ohm Of More . |
| i. Withstand Voltage (Hi-Pot) | AC 2500V 60Hz 1 Minutes . |
| j. Temperature Rise | Less Than 60 Deg C . |
| k. Core Size | EI-57 x 26.00 m/m . |

l. Turns & Wire Gauge

Primary-1	Pin 1-2	694	Turns Diameter	0.20 m/m
Primary-2	Pin 4-5	694	Turns Diameter	0.20 m/m
Secondary	Pin 6-8-10	0-57-114	Turns Diameter	0.70 m/m



RoHS Compliant

NOTE : Specifications subject to change without notice. Please check our website for latest information.

25.02.2008



SUPERWORLD ELECTRONICS (S) PTE LTD

PG. 1