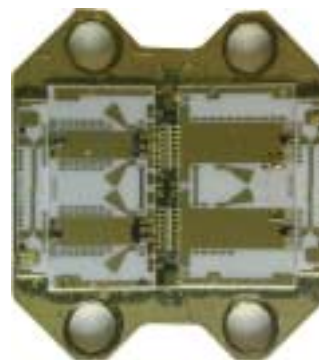


5.3 – 5.9 GHz 39 dBm Power Module

FEATURES

- P₁ dB: 39 dBm
- Small Signal Gain: 9 dB
- IP3: 47 dBm
- Bias Condition: 2400 mA @ 9 V



ELECTRICAL SPECIFICATIONS (Ta = 25 °C)

| SYMBOL | DESCRIPTION | MIN | TYP | MAX | UNITS |
|-------------------------|---------------------------------------|------|-------|-------|-------|
| FREQ | Frequency Range | 5.3 | | 5.9 | GHz |
| SSG | Small Signal Gain | 8 | 9 | | dB |
| GOF | SSG Flatness | | ± 0.3 | ± 0.5 | dB |
| P₁ dB | Output Power at 1 dB Gain Compression | 38 | 39 | | dBm |
| IP3 | Third Order Intercept Point | 46 | 47 | | dBm |
| VSWR, IN | Input VSWR | | 1.5:1 | 1.8:1 | - |
| VSWR, OUT | Output VSWR | | 1.5:1 | 1.8:1 | - |
| VDC | Supply Voltage | | 9 | | Volt |
| Vg | Gate Voltage | -1.2 | -0.8 | -0.4 | |
| IDC | Current Supply | | 2400 | 2500 | mA |

CARRIER: S33 / Z33