

SHIELDED SMD POWER INDUCTORS

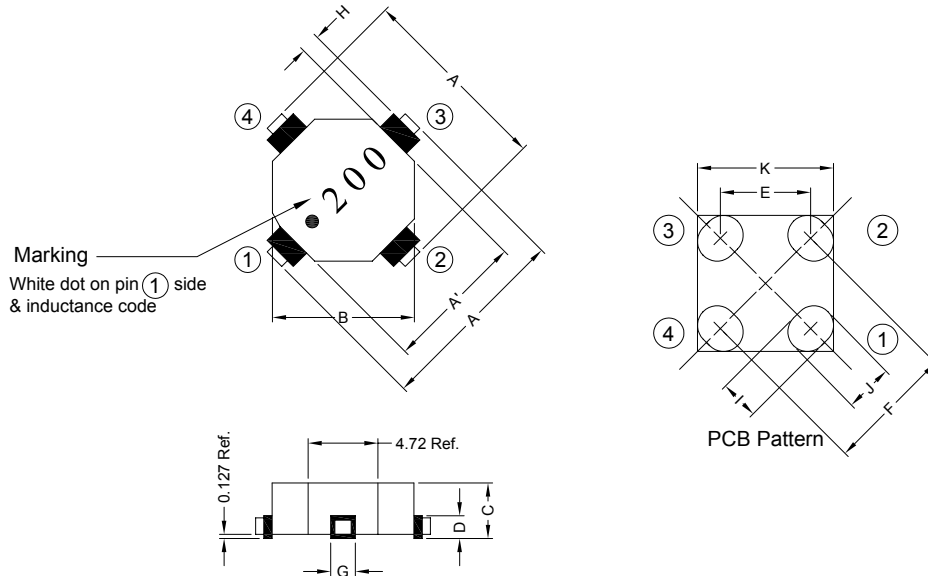
STB1306 SERIES

1. PART NO. EXPRESSION :

STB1306R49MZ F
 (a) (b) (c) (d)(e)(f)

- (a) Series code
- (b) Dimension code
- (c) Inductance code : R49 = 0.49uH
- (d) Tolerance code : M = ±20%
- (e) X, Y, Z : Standard part
- (f) F : Lead Free

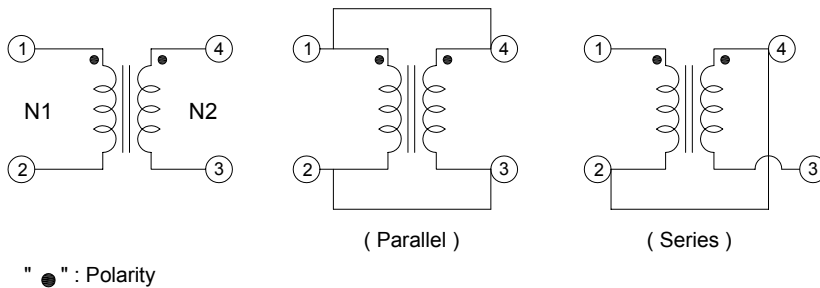
2. CONFIGURATION & DIMENSIONS :



Unit:m/m

A	A'	B	C	D	E	F	G	H	I	J	K
13.97 Typ.	11.43 Typ.	11.43 Typ.	6.35 Max.	3.05 Max.	8.84 Typ.	12.50 Typ.	3.55 Max.	0.76 Min.	3.05 Typ.	4.06 Typ.	12.50 Typ.

3. SCHEMATIC :



RoHS Compliant

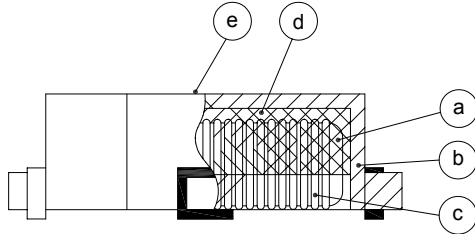
NOTE : Specifications subject to change without notice. Please check our website for latest information.

09.05.2008

4. GENERAL SPECIFICATION :

- a) Operating temp. : -40°C to +85°C
- b) Resistance to solder heat : 260°C. 10secs

5. MATERIALS :



- (a) Core : Iron Core
- (b) Base : Phenolic
- (c) Wire : Enamelled Copper Wire
- (d) Adhesive : Epoxy
- (e) Ink : Bon Margue

6. ELECTRICAL CHARACTERISTICS :

Part No.	Parallel					Series				
	L (μ H) $\pm 20\%$	L IDC (μ H) Min.	Test Frequency (Hz)	RDC (Ω) Max.	IDC (A)	L (μ H) $\pm 20\%$	L IDC (μ H) Min.	Test Frequency (Hz)	RDC (Ω) Max.	IDC (A)
STB1306R49MZF	0.49	0.37	0.25V/100K	0.0093	7.90	1.95	1.49	0.25V/100K	0.019	3.95
STB1306R76MZF	0.76	0.56	0.25V/100K	0.0112	7.20	3.05	2.24	0.25V/100K	0.023	3.60
STB13061R1MZF	1.10	0.81	0.25V/100K	0.0166	5.90	4.39	3.24	0.25V/100K	0.033	2.95
STB13061R9MZF	1.95	1.42	0.25V/100K	0.0274	4.60	7.81	5.69	0.25V/100K	0.055	2.30
STB13065R1MZF	5.15	3.56	0.25V/100K	0.0534	3.30	20.62	14.23	0.25V/100K	0.107	1.65
STB13067R8MZF	7.81	5.15	0.25V/100K	0.0653	3.00	31.23	20.61	0.25V/100K	0.131	1.50
STB13069R8MZF	9.88	6.70	0.25V/100K	0.0933	2.50	39.53	26.79	0.25V/100K	0.187	1.25
STB1306140MZF	14.76	9.52	0.25V/100K	0.1139	2.30	59.05	38.09	0.25V/100K	0.228	1.15
STB1306200MZF	20.62	13.44	0.25V/100K	0.1684	1.90	82.47	53.76	0.25V/100K	0.337	0.95
STB1306250MZF	25.65	17.17	0.25V/100K	0.2306	1.60	102.60	68.68	0.25V/100K	0.461	0.80
STB1306330MZF	33.21	22.93	0.25V/100K	0.3312	1.30	132.86	91.72	0.25V/100K	0.662	0.65
STB1306480MZF	48.80	32.21	0.25V/100K	0.4025	1.20	195.20	128.83	0.25V/100K	0.805	0.60
STB1306670MZF	67.37	43.04	0.25V/100K	0.4760	1.10	269.50	172.16	0.25V/100K	0.952	0.55
STB1306990MZF	99.09	69.54	0.25V/100K	1.1300	0.72	396.38	278.15	0.25V/100K	2.259	0.36

* Turns Ratio : 1 : 1

* Hi-Pot Test (N1-N2) : 300VDC 1mA 1SECOND



RoHS Compliant

NOTE : Specifications subject to change without notice. Please check our website for latest information.

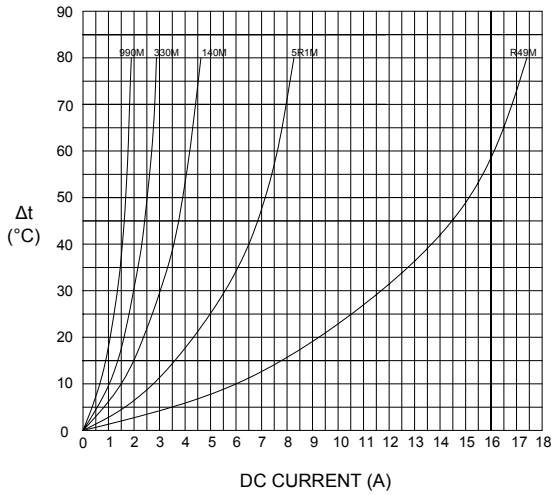
09.05.2008



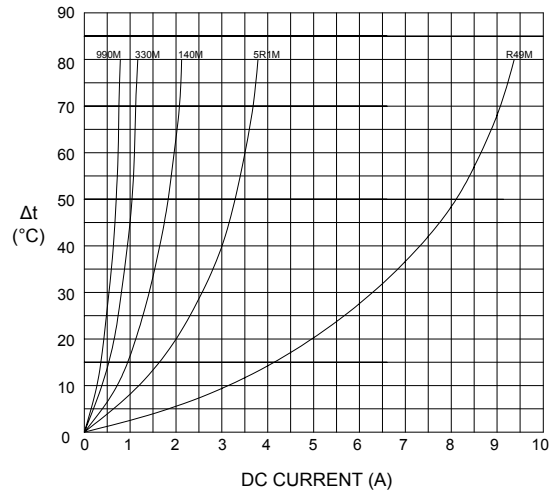
SUPERWORLD ELECTRONICS (S) PTE LTD

7. CHARACTERISTICS CURVES :

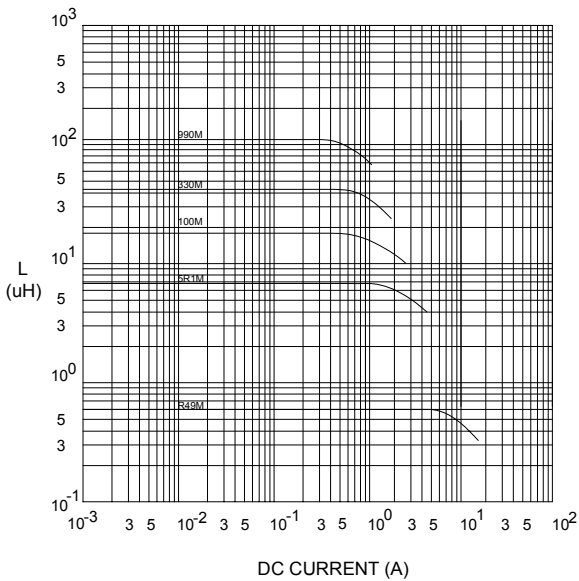
@ TEMP. RISE VS. DC SUPERPOSITION RESPONSE CURVE (PARA)



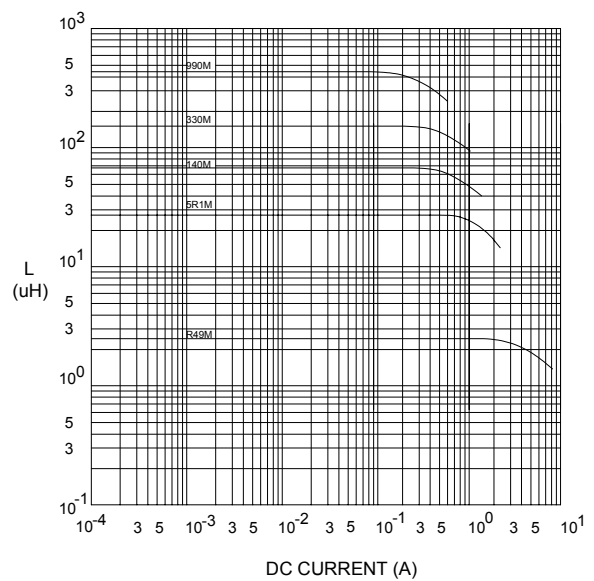
@ TEMP. RISE VS. DC SUPERPOSITION RESPONSE CURVE (SER)



@ INDUCTANCE VS. DC SUPERPOSITION RESPONSE CURVE (PARA)



@ INDUCTANCE VS. DC SUPERPOSITION RESPONSE CURVE (SER)



RoHS Compliant

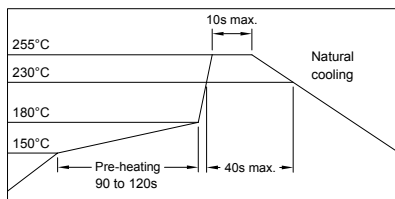
NOTE : Specifications subject to change without notice. Please check our website for latest information.

09.05.2008



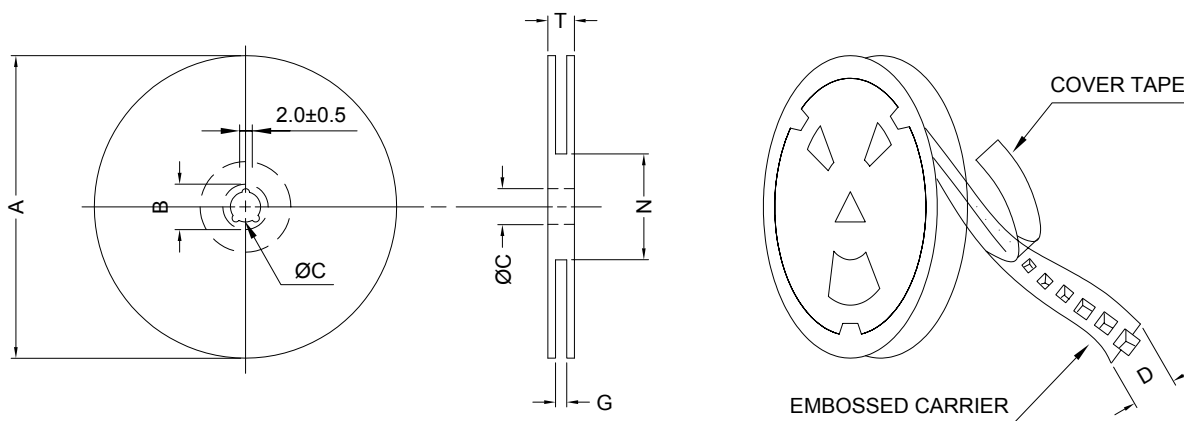
SUPERWORLD ELECTRONICS (S) PTE LTD

RECOMMENDED SOLDERING CONDITIONS REFLOW SOLDERINGS

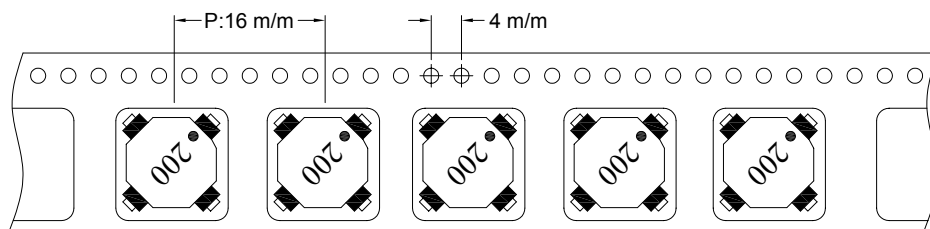


8. PACKAGING INFORMATION :

(1) CONFIGURATION



* CARRIER TAPE WIDTH : D



(2) DIMENSIONS

Unit:m/m

STYLE	A	B	C	D	G	N	T
13-24	330	21±0.8	13±0.5	24	26 ⁺⁰	50 ⁻⁰	30.4

(3) Q'TY & G.W. PER PACKAGE

SERIES	INNER : REEL			OUTER : CARTON		
	Q'TY (PCS)	G.W. (gw)	STYLE	Q'TY (PCS)	G.W. (Kg)	SIZE (cm)
STB1306	600	1900	13-24	2400	11.1	40 x 40 x 24



RoHS Compliant

NOTE : Specifications subject to change without notice. Please check our website for latest information.

09.05.2008

9. UL CARD :

QMFZ2		January 15, 1991									
Component-Plastics											
SUMITOMO BAKELITE CO LTD											
										E41429 (M)	
										(11-cont. from I card)	
PM-9630	BK	0.40	94V-0	150	150	150	—	—	—	—	—
		0.51	94V-0	150	150	150	0	0	—	—	—
		3.18	94V-0	150	150	150	0	1	0	4	3
PM-8315	BK	0.50	94V-0	150	150	150	3	0	0	—	—
PM-8315J	BN	0.71	94V-0	150	150	150	2	0	0	—	—
		1.47	94V-0	150	150	150	0	2	0	—	—
		3.05	94V-0	150	150	150	0	1	0	5	4
		6.10	94V-0	150	150	150	0	1	0	5	4
PM-8315K	BK	0.78	94V-1	150	150	150	—	—	—	—	—
		1.52	94V-0	150	150	150	—	—	—	—	—
PM-8320J	BK	0.71	94HB	150	150	150	—	—	—	—	—
PM-8330	BK	0.71	94V-1	150	150	150	—	—	—	—	—
		1.57	94V-0	150	150	150	—	—	—	—	—
PM-8400	BK	0.71	94HB	150	150	150	—	—	—	—	—
PM-9830	BK	0.69	94V-0	150	150	150	0	0	—	—	—
		3.18	94V-0	150	150	150	0	0	0	4	3

Reports: March 29, 1985: May 14, 1974: September 16, 1971: September 16, 1971:
September 16, 1971: September 16, 1971: March 29, 1985.

Replaces E4142911 dated February 28, 1990. (Cont. on J card)
683540014 N7047 Underwriters Laboratories Inc. ® D11/0043416



RoHS Compliant

NOTE : Specifications subject to change without notice. Please check our website for latest information.

09.05.2008



SUPERWORLD ELECTRONICS (S) PTE LTD