

1. PART NO. EXPRESSION :

RCC1008100MZ F
 (a) (b) (c) (d)(e)(f)

(a) Series code

(b) Dimension code

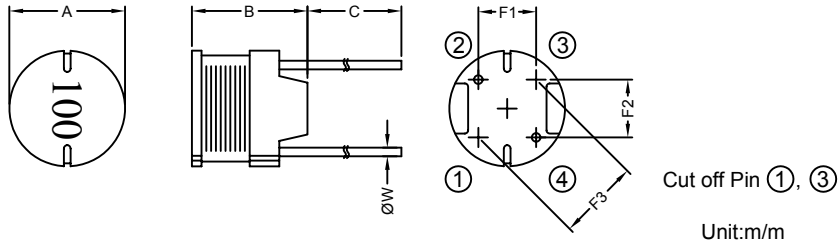
(c) Inductance code : 100 = 10.0uH

(d) Tolerance code : K = ±10%, M = ±20%

(e) X, Y, Z : Standard part

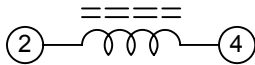
(f) F : Lead Free

2. CONFIGURATION & DIMENSIONS :

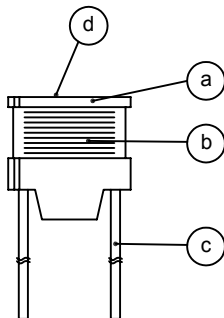


A	B	C	F1	F2	F3	ØW
10.00±0.5	8.00±0.5	15.00±3.0	4.00±0.5	5.00±0.5	6.40±0.5	0.65±0.10

3. SCHEMATIC :



4. MATERIALS :



(a) Core : DR Ferrite Core

(b) Wire : Enamelled Copper Wire

(c) Lead : Tinned Copper Wire

(d) Ink : Bon Margue

5. GENERAL SPECIFICATION :

- a) The inductance drop at rated is 10% max.
- b) Temp. rise : 40°C max. at rated current
- c) Storage temp. : -40°C to +125°C
- d) Operating temp. : -40°C to +85°C



RoHS Compliant

NOTE : Specifications subject to change without notice. Please check our website for latest information.

01.07.2008

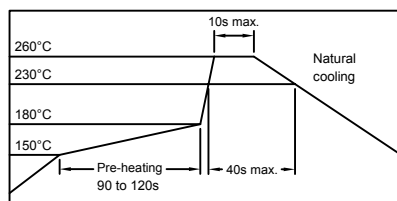


SUPERWORLD ELECTRONICS (S) PTE LTD

6. ELECTRICAL CHARACTERISTICS :

Part No.	Inductance (μ H)	Test Frequency (Hz)	RDC (Ω) Max.	IDC (A) Max.
RCC1008100MZF	10 \pm 20%	2.52M	0.027	4.50
RCC1008120MZF	12 \pm 20%	2.52M	0.031	4.10
RCC1008150MZF	15 \pm 20%	2.52M	0.036	3.70
RCC1008180MZF	18 \pm 20%	2.52M	0.049	3.40
RCC1008220MZF	22 \pm 20%	2.52M	0.055	3.10
RCC1008270MZF	27 \pm 20%	2.52M	0.062	2.80
RCC1008330KZF	33 \pm 10%	2.52M	0.079	2.50
RCC1008390KZF	39 \pm 10%	2.52M	0.087	2.30
RCC1008470KZF	47 \pm 10%	2.52M	0.099	2.10
RCC1008560KZF	56 \pm 10%	2.52M	0.130	1.90
RCC1008680KZF	68 \pm 10%	2.52M	0.140	1.70
RCC1008820KZF	82 \pm 10%	2.52M	0.160	1.60
RCC1008101KZF	100 \pm 10%	1K	0.210	1.40
RCC1008121KZF	120 \pm 10%	1K	0.240	1.30
RCC1008151KZF	150 \pm 10%	1K	0.320	1.20
RCC1008181KZF	180 \pm 10%	1K	0.350	1.10
RCC1008221KZF	220 \pm 10%	1K	0.450	0.96
RCC1008271KZF	270 \pm 10%	1K	0.610	0.87
RCC1008331KZF	330 \pm 10%	1K	0.690	0.79
RCC1008391KZF	390 \pm 10%	1K	0.780	0.72
RCC1008471KZF	470 \pm 10%	1K	1.000	0.66
RCC1008561KZF	560 \pm 10%	1K	1.200	0.60
RCC1008681KZF	680 \pm 10%	1K	1.400	0.55
RCC1008821KZF	820 \pm 10%	1K	1.800	0.50
RCC1008102KZF	1000 \pm 10%	1K	2.100	0.45

RECOMMENDED SOLDERING CONDITIONS REFLOW SOLDERINGS



RoHS Compliant

NOTE : Specifications subject to change without notice. Please check our website for latest information.

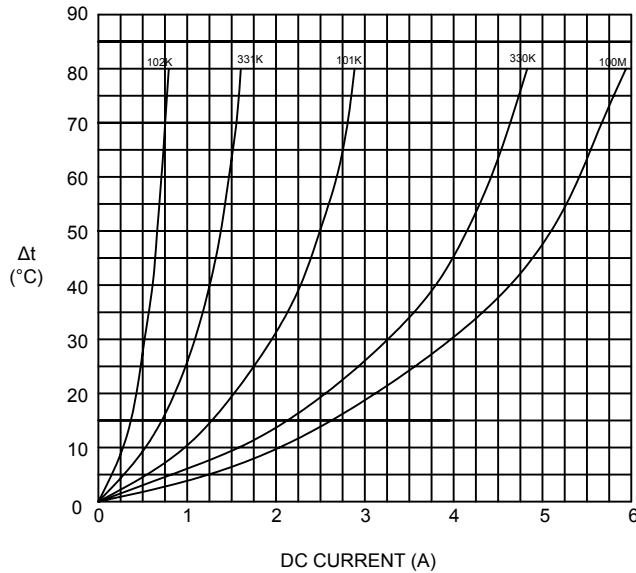
01.07.2008



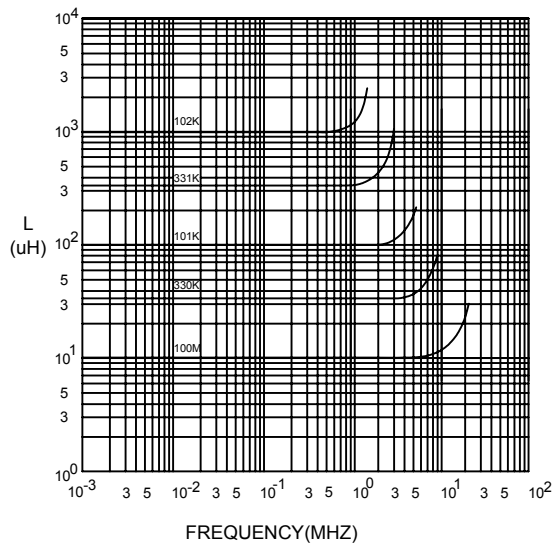
SUPERWORLD ELECTRONICS (S) PTE LTD

7. CHARACTERISTICS CURVES :

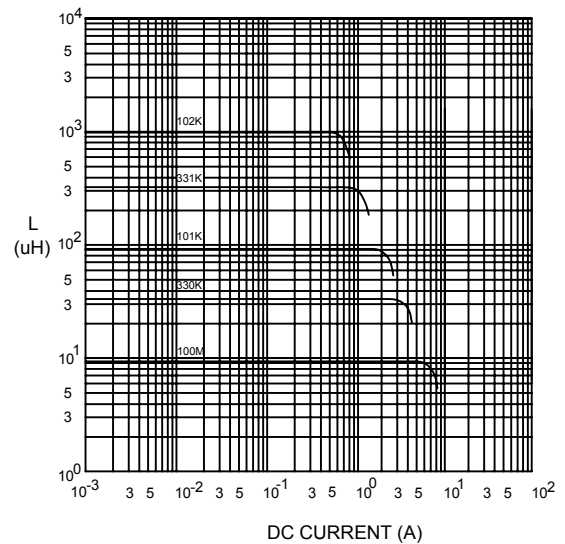
@ TEMP. RISE VS. DC SUPERPOSITION RESPONSE CURVE



@ INDUCTANCE VS. FREQUENCY RESPONSE CURVE



@ INDUCTANCE VS. DC SUPERPOSITION RESPONSE CURVE



NOTE : Specifications subject to change without notice. Please check our website for latest information.



RoHS Compliant



8. PACKAGING INFORMATION :

Size	RCC1008
Inner Package	Box (small)
Quantity	150 pcs

9. UL CARD :

OBMW2

November 30, 2000

Magnet Wire - Component

PACIFIC ELECTRIC WIRE & CABLE (SHENZHEN) CO LTD
607 BAOLONG INDUSTRIAL ESTATE LONGGANG, SHENZHEN
GUANGDONG CHINA

E201757

Mtl Dsg	BC	Coating Type	TC	ANSI Type	TI
UEW/U		Polyurethane	—	—	130
PEW/U		Polyester	—	MW5-C	155°C
PEWH/U		Modified Polyester	—	MW30-C	180
PEW-NY/U		Polyester	Polyamide	MW24-C	155
HAI/U		Polyester(Amide)(Imide)	Polyamideimide	MW35,73	200
UEW-NY/U		Polyurethane	Polyamide	MW80-C	155
				MW28-C	130

Marking: Company name and material designation or marked designation on package or reel, and Recognized Component Mark.

See General Information Preceding These Recognitions

1/3/2001

Underwriters Laboratories Inc.

Card 1 of 2



RoHS Compliant

NOTE : Specifications subject to change without notice. Please check our website for latest information.

01.07.2008



SUPERWORLD ELECTRONICS (S) PTE LTD

PG. 4