

RADIAL CHOKE COIL

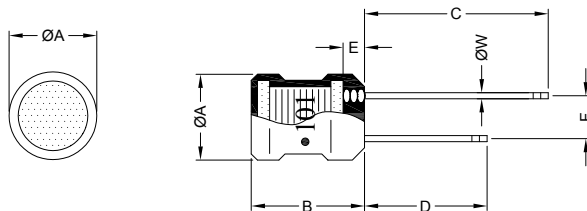
RCB0912 SERIES

1. PART NO. EXPRESSION :

R C B 0 9 1 2 1 0 1 K Z F
 (a) (b) (c) (d)(e)(f)

- (a) Series code
- (b) Dimension code
- (c) Inductance code : 101 = 100uH
- (d) Tolerance code : K = ±10%
- (e) X, Y, Z : Standard part
- (f) F : Lead Free

2. CONFIGURATION & DIMENSIONS :

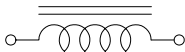


Marking :
 " ● " : Start

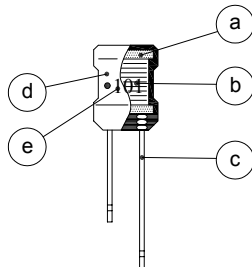
Unit:m/m

ØA	B	C	D	E	F	ØW
8.7±0.5	12.0±1.0	25.0±5.0	18.0±5.0	2.5 Max.	5.0±0.8	0.65 Ref.

3. SCHEMATIC :



4. MATERIALS :

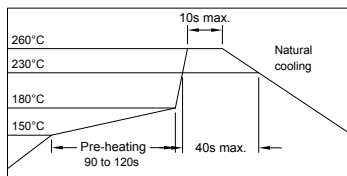


- (a) Core : DR Ferrite Core
- (b) Wire : Enamelled Copper Wire
- (c) Lead : Tinned Copper Wire
- (d) Tube : Shrinkable Tube
- (e) Ink : Bon Margue

5. GENERAL SPECIFICATION :

- a) Temp. rise : 20°C Max. at rated current
- b) Storage temp. : -40°C to +125°C
- c) Operating temp. : -40°C to +105°C

RECOMMENDED SOLDERING CONDITIONS
 REFLOW SOLDERINGS



NOTE : Specifications subject to change without notice. Please check our website for latest information.



RoHS Compliant

18.04.2008



SUPERWORLD ELECTRONICS (S) PTE LTD

6. ELECTRICAL CHARACTERISTICS :

Part No.	Inductance (μ H)	Q Min.	Test Frequency (KHz)	SRF (MHz) Min.	RDC (Ω) Max.	IDC (mA) Max.
RCB0912101KZF	100 \pm 10%	45	1V/796.0	3.20	0.85	350
RCB0912121KZF	120 \pm 10%	45	1V/796.0	3.00	0.95	330
RCB0912151KZF	150 \pm 10%	45	1V/796.0	2.80	1.05	310
RCB0912181KZF	180 \pm 10%	45	1V/796.0	2.50	1.15	300
RCB0912221KZF	220 \pm 10%	40	1V/796.0	2.10	1.30	280
RCB0912271KZF	270 \pm 10%	40	1V/796.0	2.00	1.50	260
RCB0912331KZF	330 \pm 10%	40	1V/796.0	1.95	1.70	240
RCB0912391KZF	390 \pm 10%	40	1V/796.0	1.85	1.85	230
RCB0912471KZF	470 \pm 10%	35	1V/796.0	1.55	2.30	210
RCB0912561KZF	560 \pm 10%	35	1V/796.0	1.30	2.55	200
RCB0912681KZF	680 \pm 10%	35	1V/796.0	1.15	2.85	190
RCB0912821KZF	820 \pm 10%	35	1V/796.0	1.00	3.10	180
RCB0912102KZF	1000 \pm 10%	50	1V/252.0	0.90	4.10	160
RCB0912122KZF	1200 \pm 10%	50	1V/252.0	0.80	4.70	150
RCB0912152KZF	1500 \pm 10%	50	1V/252.0	0.70	5.80	130
RCB0912182KZF	1800 \pm 10%	50	1V/252.0	0.60	7.40	115
RCB0912222KZF	2200 \pm 10%	50	1V/252.0	0.55	8.40	110
RCB0912272KZF	2700 \pm 10%	50	1V/252.0	0.50	9.60	95
RCB0912332KZF	3300 \pm 10%	50	1V/252.0	0.45	10.50	80
RCB0912392KZF	3900 \pm 10%	50	1V/252.0	0.40	12.00	70
RCB0912472KZF	4700 \pm 10%	45	1V/252.0	0.38	14.00	65
RCB0912562KZF	5600 \pm 10%	45	1V/252.0	0.36	16.00	60
RCB0912682KZF	6800 \pm 10%	40	1V/252.0	0.34	18.00	55
RCB0912822KZF	8200 \pm 10%	40	1V/252.0	0.32	24.50	50
RCB0912103KZF	10000 \pm 10%	50	1V/79.6	0.30	32.00	45
RCB0912123KZF	12000 \pm 10%	50	1V/79.6	0.28	36.00	40
RCB0912153KZF	15000 \pm 10%	50	1V/79.6	0.26	48.00	35
RCB0912183KZF	18000 \pm 10%	45	1V/79.6	0.24	52.00	30
RCB0912223KZF	22000 \pm 10%	45	1V/79.6	0.22	58.00	28
RCB0912273KZF	27000 \pm 10%	45	1V/79.6	0.20	62.00	26
RCB0912333KZF	33000 \pm 10%	45	1V/79.6	0.18	90.00	24
RCB0912393KZF	39000 \pm 10%	40	1V/79.6	0.17	100.00	22
RCB0912473KZF	47000 \pm 10%	35	1V/79.6	0.16	150.00	20
RCB0912563KZF	56000 \pm 10%	35	1V/79.6	0.15	200.00	18
RCB0912683KZF	68000 \pm 10%	35	1V/79.6	0.14	220.00	16
RCB0912823KZF	82000 \pm 10%	30	1V/79.6	0.12	240.00	14



RoHS Compliant

NOTE : Specifications subject to change without notice. Please check our website for latest information.

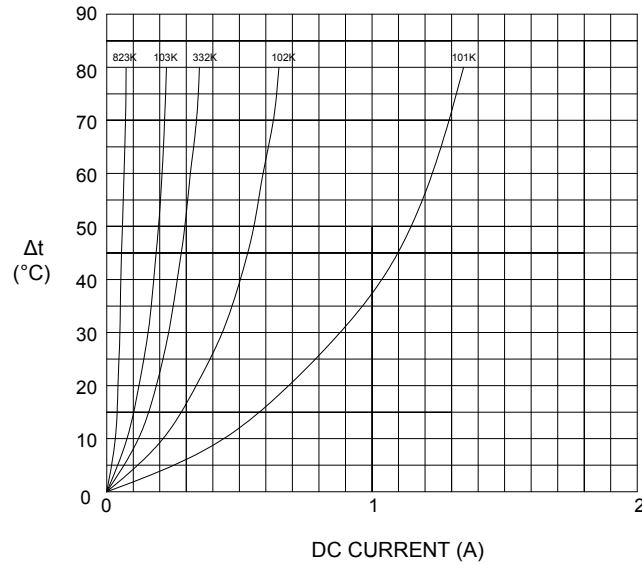
18.04.2008



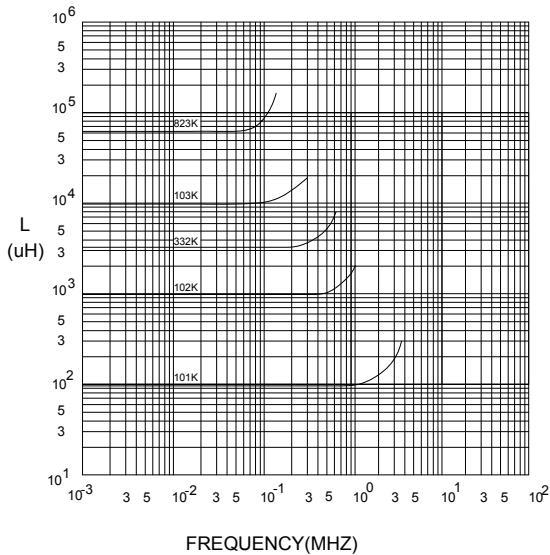
SUPERWORLD ELECTRONICS (S) PTE LTD

7. CHARACTERISTICS CURVES :

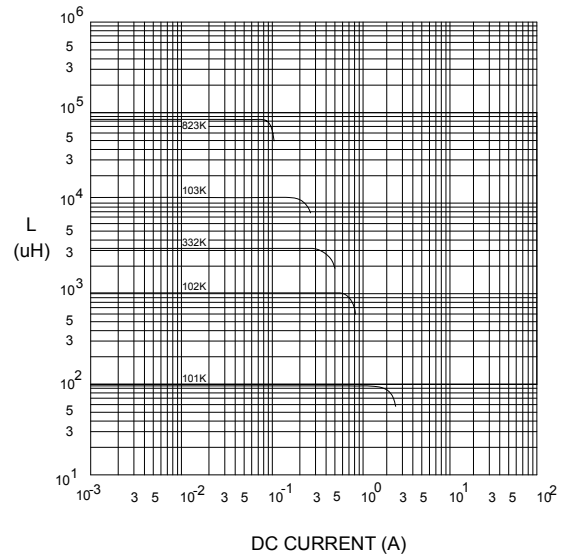
@ TEMP. RISE VS. DC SUPERPOSITION RESPONSE CURVE



@ INDUCTANCE VS. FREQUENCY RESPONSE CURVE



@ INDUCTANCE VS. DC SUPERPOSITION RESPONSE CURVE



RoHS Compliant

NOTE : Specifications subject to change without notice. Please check our website for latest information.

18.04.2008



SUPERWORLD ELECTRONICS (S) PTE LTD

RADIAL CHOKE COIL

RCB0912 SERIES

8. UL CARD :

OBMW2 **November 30, 2000**
Magnet Wire - Component

PACIFIC ELECTRIC WIRE & CABLE (SHENZHEN) CO LTD **E201757**
 607 BAOLONG INDUSTRIAL ESTATE LONGGANG, SHENZHEN
 GUANGDONG CHINA

Mtl Dsg	Coating Type	BC	TC	ANSI Type	TI
UEW/U	Polyurethane	—	—	—	130
PEW/U	Polyester	—	—	MW5-C	155°C
PEWH/U	Modified Polyester	—	—	MW30-C	180
PEW-NY/U	Polyester	—	Polyamide	MW24-C	155
HAI/U	Polyester(Amide)(Imide)	—	Polyamideimide	MW35,73	200
UEW-NY/U	Polyurethane	—	Polyamide	MW80-C	155
				MW28-C	130

Marking: Company name and material designation or marked designation on package or reel, and Recognized Component Mark.

See General Information Preceding These Recognitions

1/3/2001 Underwriters Laboratories Inc. Card 1 of 2

YDPU8 **August 18, 1999**
Tube Extruded Insulating Certified For Canada - Component

SHENZHEN CHANGBAO SPECIAL PLASTIC PRODUCTS CO LTD **E180908**
 SHENZHEN SCIENCE & INDUSTRY PARK NAN SHAN
 SHENZHEN, GUANGDONG 518057 CHINA

Cat. No.	Max V	Max Temp C	Col. Recognized	Max Temp Rated Oil Resistance *C	OFT Rated #
Polyolefin heat shrinkable tubing.					
Changbao 102	600	125	All	—	Yes

#Tubing is considered to comply with the optional OFT flammability requirements only if it is so marked.

Marking: Company name, catalog number and temperature rating in degrees C appears on tubing, tags attached to both ends of the tubing or on the shipping spool label or smallest unit container and the Recognized Component Mark for Canada .

See General Information Preceding These Recognitions
 For use only in equipment where the acceptability of the combination is determined by Underwriters Laboratories Inc.

8/31/1999 Underwriters Laboratories Inc. Card 1 of 1



RoHS Compliant

NOTE : Specifications subject to change without notice. Please check our website for latest information.

18.04.2008



SUPERWORLD ELECTRONICS (S) PTE LTD