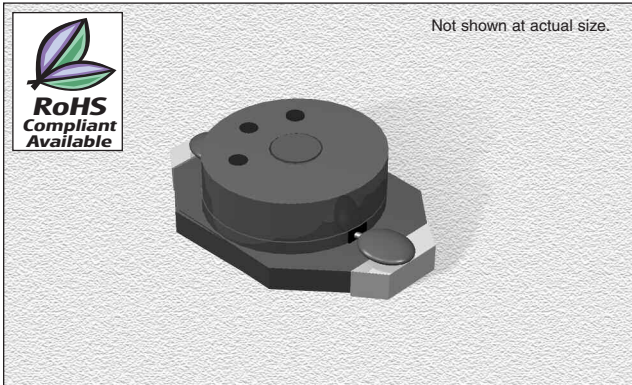


CTDT1608 Series

From 1.0 μH to 1,000 μH

SPECIFICATIONS

Parts are available in $\pm 20\%$ tolerance only.
CTDT1608CE Please specify "F" for RoHS Compliant



Part Number	SPECIFICATIONS			OPERATING PARAMETERS			
	0 ADC Inductance ($\mu\text{H} \pm 20\%$)	DCR Max. (Ω)	Inductance Rating (μH)	L Test Freq. (kHz)	Max. Current Rating (A)	Energy Storage (μJoules)	Max. Switch Freq.
CTDT1608C_-102	1.0	.05	.60	100	2.0	1.8	1.0 MHz
CTDT1608C_-152	1.5	.05	.80	100	1.9	1.8	1.0 MHz
CTDT1608C_-222	2.2	.06	.90	100	1.5	1.8	1.0 MHz
CTDT1608C_-332	3.3	.07	1.5	100	1.2	1.4	1.0 MHz
CTDT1608C_-472	4.7	.08	2.0	100	1.2	1.6	1.0 MHz
CTDT1608C_-682	6.8	.09	3.0	100	1.0	1.9	1.0 MHz
CTDT1608C_-103	10	.10	5.0	100	.70	1.2	1.0 MHz
CTDT1608C_-153	15	.14	6.0	100	.60	1.1	1.0 MHz
CTDT1608C_-223	22	.16	10	100	.50	1.2	1.0 MHz
CTDT1608C_-333	33	.28	12	100	.45	1.5	1.0 MHz
CTDT1608C_-473	47	.34	20	100	.34	1.3	1.0 MHz
CTDT1608C_-683	68	.58	30	100	.29	1.4	1.0 MHz
CTDT1608C_-104	100	1.1	40	100	.24	1.5	1.0 MHz
CTDT1608C_-154	150	1.4	60	100	.20	1.4	500 kHz
CTDT1608C_-224	220	2.3	90	100	.17	1.6	500 kHz
CTDT1608C_-334	330	2.9	100	100	.16	1.4	500 kHz
CTDT1608C_-474	470	3.6	150	100	.14	1.5	500 kHz
CTDT1608C_-684	680	4.6	200	100	.12	1.4	500 kHz
CTDT1608C_-105	1000	8.1	400	100	.08	1.4	500 kHz

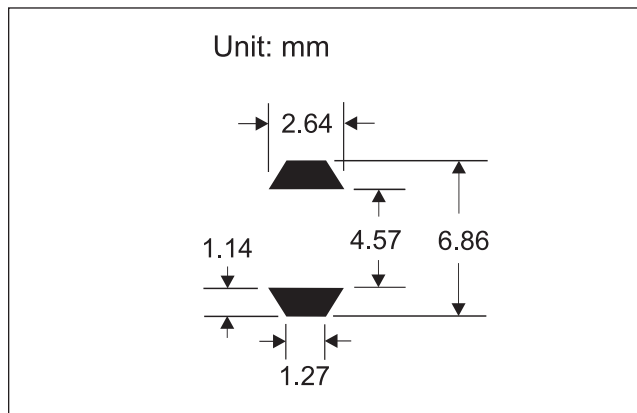
CHARACTERISTICS

- Description:** SMD (shielded) power inductor
- Applications:** DC/DC converters, computers, LCD displays and telecommunication equipment
- Operating Temperature:** -40°C to $+85^{\circ}\text{C}$
- Inductance Tolerance:** $\pm 20\%$
- Testing:** Inductance is tested on a HP4285A at 100 kHz
- Packaging:** Tape & Reel
- Marking:** Color dots OR Inductance code
- Miscellaneous:** **RoHS Compliant available.** Magnetically shielded
- Additional Information:** Additional electrical & physical information available upon request
- Samples available.** See website for ordering information.

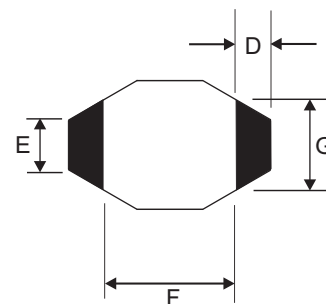
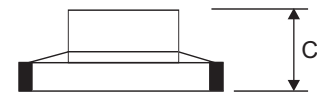
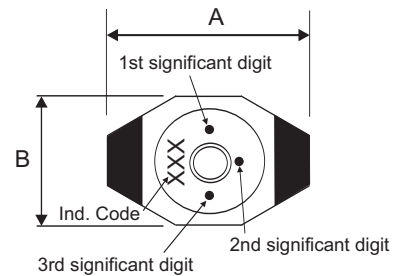
PHYSICAL DIMENSIONS

Size	A Max.	B Max.	C Max.	D	E	F	G
mm	6.58	4.45	2.92	0.78	1.27	4.80	2.34
inches	0.26	0.18	0.12	0.03	0.05	0.19	0.09

PAD LAYOUT



Parts will be marked with Significant Digit Dots OR Inductance Code



05.24.06