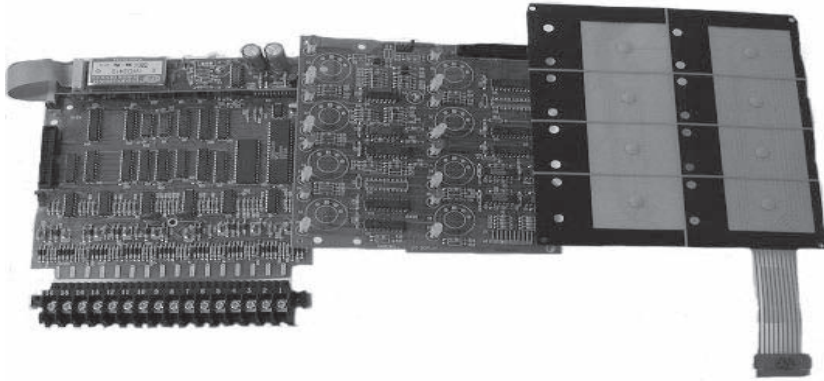


# AM500

## Addressable Module



### Description

Gamewell's 600 Series AM500 Addressable Module provides the monitoring and control of detectors and addressable input and output devices previously installed with Gamewell's Flex 500 A control panel, giving end-users backward compatibility between existing Flex 500 and the 632/650 analog addressable technology. The AM500 addressable module is configured with eight addressable circuits, with each circuit capable of monitoring up to 50 individual points. The addressable module has a dedicated microprocessor that monitors each of its circuits while communicating all status information to the main CPU of the 600 Series control panel.

Each module is supported by a display module that provides alarm and trouble annunciation LEDs and tactile switches for control by circuit. The display module has space for custom labeling of each circuit.

### Operation

The AM500 Addressable Module occupies a bus position in the 632 or 650 Series control panel. The AM500 interrogates all the compatible connected devices for their alarm and trouble status. Compatible input devices return their alarm status to the addressable module which, in turn, communicates to the main CPU of the control panel for recording of the alarm and trouble status. Communication time is kept to a minimum by utilizing parallel processing on both the system MPU bus and the circuits of the AM500 addressable module. The AM500 addressable module is capable of supporting the Flex 500 A control panel's addressable control devices, addressable input interface and addressable detectors.

The Addressable Module monitors its circuits for ground faults. It will operate in the event that the system enters into default alarm mode. The AM500 Addressable Module will support Style 4, 6, and 7 wiring.

### Features

- Monitors and controls Flex 500 addressable devices from Gamewell's 632/650 series analog addressable control panels.
- Eight Flex 500 circuits per module.
- Monitors and controls up to 50 points per circuit.
- Two modules per control panel.
- Dedicated microprocessor minimizes communications intervals.
- Field programmable.
- Default alarm mode operation.
- Power limited.
- Style 4, 6, and 7 wiring.
- Module can be removed without disturbing field wiring.

### Listings

Listings and approvals below apply to the basic AM500 Addressable Module. In some cases, certain modules may not be listed by certain approval agencies, or listing may be in process. Consult factory for latest listing status.

- UL Listed: file S521

### Specifications

#### Ambient temperature

30°F to 120°F (0°C to 49°C).

#### Humidity

10% to 85% R.H.

#### Alarm Current

0.07 A.

#### Standby current

0.07 A.

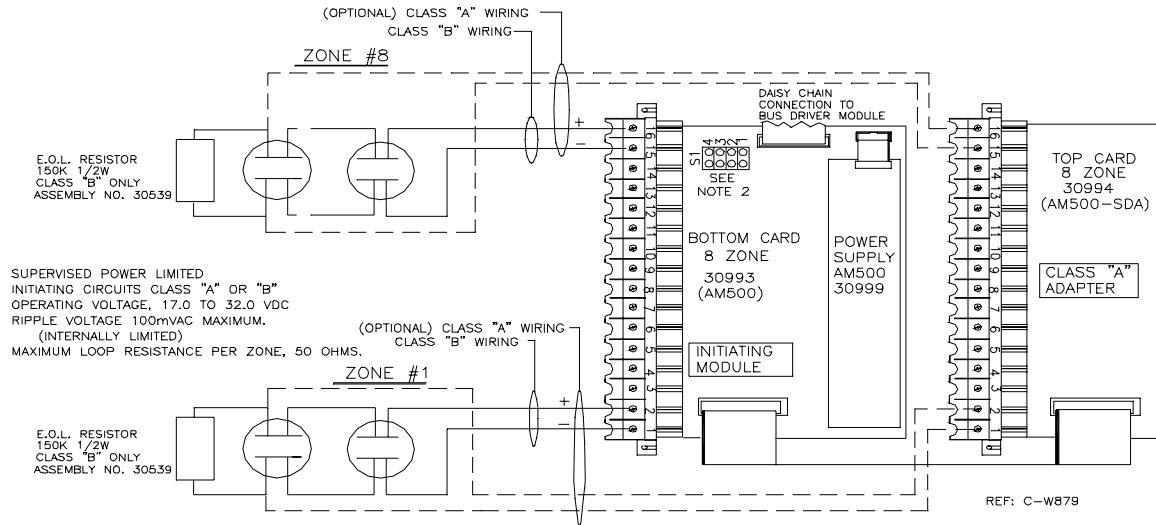
#### Class A adapter

0.06 A.

# Engineer's Specifications

The Identiflex 600 Series system shall include addressable circuits for the monitor and control of identifiable devices connected to an existing Gamewell Flex 500A control panel. The system's AM500 Addressable Module shall incorporate a dedicated microprocessor to minimize communications and response times to off normal conditions. The AM500 Addressable Module shall support Style 4, 6, and 7 field wiring. The AM500 Addressable Module shall incorporate a default operation capability which will allow the system to activate a general alarm even in the event of a CPU failure. The interface shall be Gamewell Part No. AM500.

# Wiring Diagram



# Ordering Information

- AM500** Eight circuit addressable module (Flex 500 interface) with standard display for 632/650 Series control panel (includes terminal strip and hardware).
- AM500-SDA** Class A adapter for module.



**The Gamewell Company**  
 12 Clintonville Road  
 Northford, CT 06472-1610  
 Phone: 203-484-7161  
 Fax: 203-484-7118  
 www.gamewell.com

A Honeywell Company  
 © 2004 Gamewell

Specifications and wiring information are provided for information only and are believed to be accurate. Gamewell assumes no responsibility for their use. Data and design are subject to change without notice. Installation and wiring instructions shipped with the product shall always be used for actual installation. For more information, contact Gamewell.