

# Coaxial Power Splitter/Combiner

## IZY2PD-86+ IZY2PD-86

2 Way-0° 50Ω 7000 to 8600 MHz



CASE STYLE: JJJ245

Connectors	Model	Price	Qty.
SMA	IZY2PD-86(+)	\$94.95	(1-9)

**+ RoHS compliant in accordance with EU Directive (2002/95/EC)**

The +Suffix identifies RoHS Compliance. See our web site for RoHS Compliance methodologies and qualifications.

### Maximum Ratings

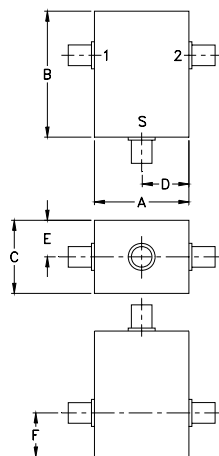
Operating Temperature	-55°C to 100°C
Storage Temperature	-55°C to 100°C
Power Input (as a splitter)	1W max.
Internal Dissipation	0.125W max.

Permanent damage may occur if any of these limits are exceeded.

### Coaxial Connections

SUM PORT	S
PORT 1	1
PORT 2	2

### Outline Drawing



### Outline Dimensions (inch/mm)

A	B	C	D	E	F	wt
.75	1.00	.58	.38	.29	.35	grams
19.05	25.40	14.73	9.65	7.37	8.89	22.0

### Features

- low insertion loss, 0.1 dB typ.
- high isolation, 30 dB typ.
- excellent input & output VSWR, 1.1:1 typ.
- excellent amplitude unbalance, 0.1 dB typ.
- rugged shielded case

### Applications

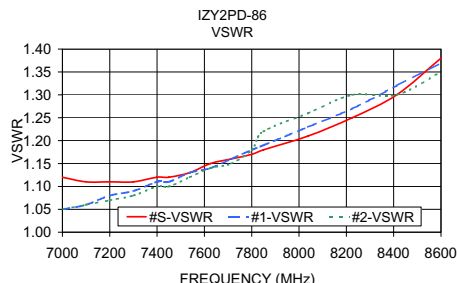
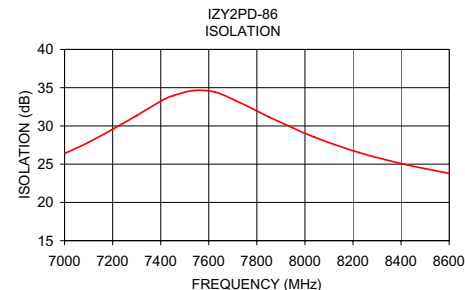
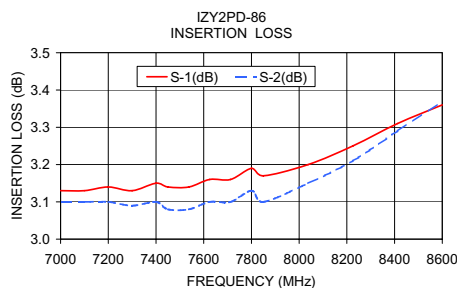
- SHF
- defense communications
- instrumentation

### Electrical Specifications

FREQ. RANGE (MHz)	ISOLATION (dB)		INSERTION LOSS (dB) ABOVE 3.0 dB		PHASE UNBALANCE (Degrees)	AMPLITUDE UNBALANCE (dB)	VSWR (:1)			
	Typ.	Min.	Typ.	Max.			S		OUT	
$f_L$ - $f_U$					Max.	Max.	Typ.	Max.	Typ.	Max.
7000-8600	30	18	0.1	0.5	6	0.25	1.1	1.45	1.1	1.4

### Typical Performance Data

Frequency (MHz)	Insertion Loss (dB)		Amplitude Unbalance (dB)	Isolation (dB)	VSWR S	VSWR 1	VSWR 2
	S-1	S-2					
7000.00	3.13	3.10	0.03	26.38	1.12	1.05	1.05
7099.90	3.13	3.10	0.03	27.86	1.11	1.06	1.06
7199.80	3.14	3.10	0.04	29.56	1.11	1.08	1.07
7299.70	3.13	3.09	0.04	31.35	1.11	1.09	1.08
7399.60	3.15	3.10	0.05	33.23	1.12	1.11	1.10
7450.00	3.14	3.08	0.06	33.95	1.12	1.11	1.10
7537.60	3.14	3.08	0.06	34.63	1.13	1.13	1.12
7625.20	3.16	3.10	0.06	34.44	1.15	1.14	1.14
7712.80	3.16	3.10	0.06	33.29	1.16	1.16	1.15
7800.40	3.19	3.13	0.06	31.96	1.17	1.18	1.18
7850.00	3.17	3.10	0.06	31.18	1.18	1.19	1.22
8037.50	3.20	3.15	0.05	28.55	1.21	1.23	1.26
8225.00	3.25	3.21	0.04	26.52	1.25	1.27	1.30
8412.50	3.31	3.29	0.02	24.99	1.30	1.32	1.30
8600.00	3.36	3.37	0.01	23.79	1.38	1.37	1.35



### electrical schematic



**Mini-Circuits®**  
ISO 9001 ISO 14001 AS 9100 CERTIFIED

**minicircuits.com**

P.O. Box 350166, Brooklyn, New York 11235-0003 (718) 934-4500 Fax (718) 332-4661 For detailed performance specs & shopping online see Mini-Circuits web site



The Design Engineers Search Engine Provides ACTUAL Data Instantly From MINI-CIRCUITS At: [www.minicircuits.com](http://www.minicircuits.com)

REV. A  
M98898  
IZY2PD-86  
HY/TD/CP/AM  
080227

IF/RF MICROWAVE COMPONENTS