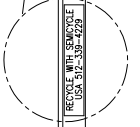
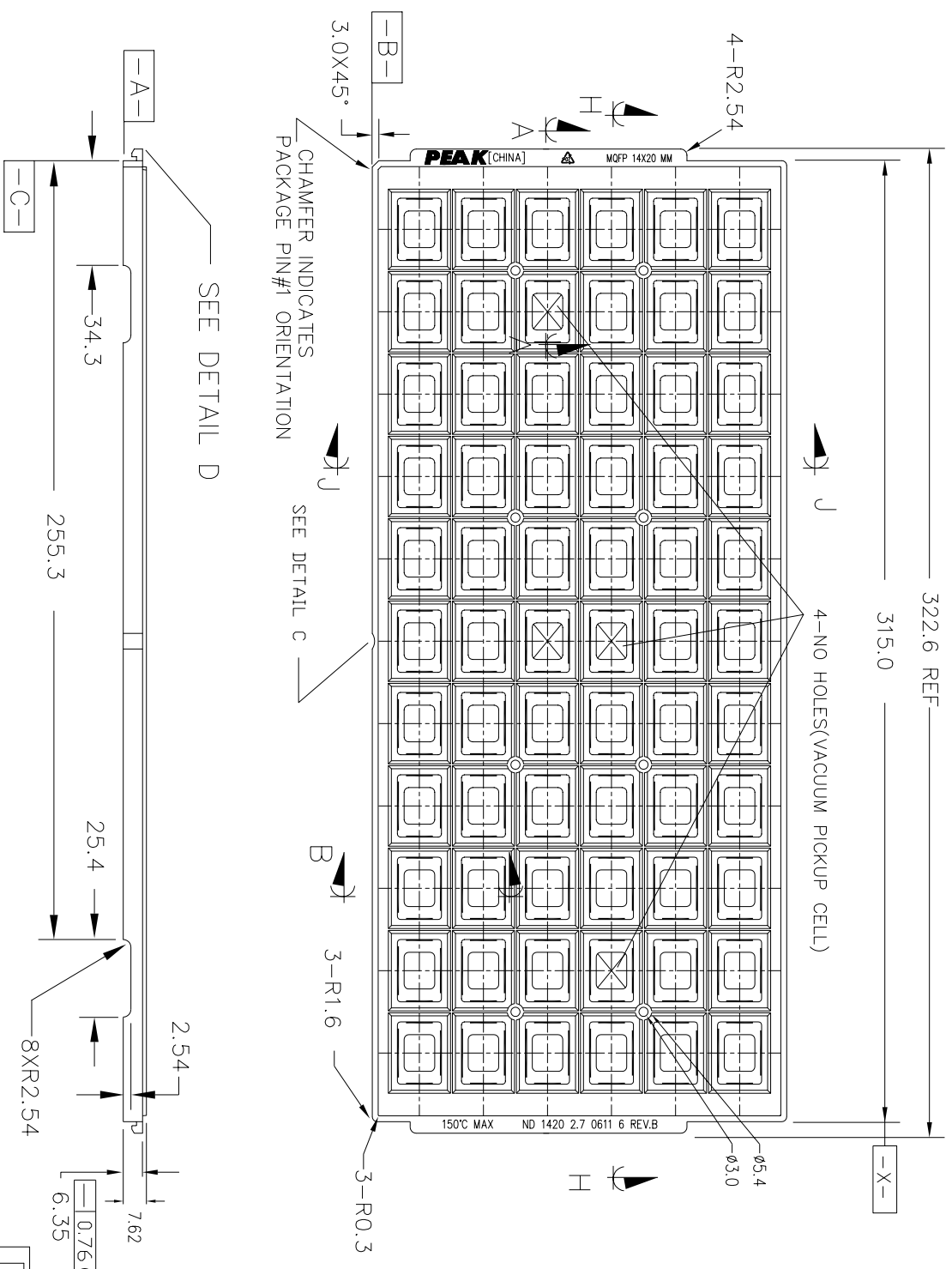


SEE DETAIL S



DETAIL S



CHAMFER INDICATES PACKAGE PIN#1 ORIENTATION

SEE DETAIL D

SEE DETAIL C

SEE DETAIL C

SEE DETAIL C

SEE DETAIL C

SEE DETAIL C

SEE DETAIL C

SEE DETAIL C

- NOTES:
1. MATERIAL - PP6.
 2. ALL DIMENSIONS ARE IN MILLIMETERS.
 3. TOLERANCES - $XX \pm 0.25$
- $XX \pm 0.13$
UNLESS OTHERWISE SPECIFIED.
 4. ESD σ SURFACE RESISTIVITY
- 10^6 TO 10^{10} OHMS/SQ.
 5. FOR PACKAGE - 2.7 MM THICKNESS.
 6. PART NO.: ND 1420 2.7 0611 6 REV.B (PLEASE INDICATE ON PURCHASE ORDER).

REV. NO.	ECN #	DESCRIPTION	DATE	APPROVED BY
12	P-00763	ADD RUNNER GATE & HOLE LOCATION	15 SEP 98	M.S.K.HOO
11	P-00657	CHANGE POSITION. TOL	10 OCT 97	M.S.K.HOO
10	P-00555	ADD DETAIL S AS MARKING	15 SEP 95	M.S.K.HOO
9	P-00524	INCLUDE WSL REQUIREMENT	21 APR 95	M.S.K.HOO
8	P-00503	CHANGE WALL THICKNESS TOL.	11 JAN 95	M.S.K.HOO
7	P-00420	CHANGE TRAY MARKING	31 DEC 94	M.S.K.HOO

THIS DOCUMENT CONTAINS INFORMATION PROPRIETARY TO PEAK PLASTIC & METAL PRODUCTS (INTERNATIONAL) LIMITED. REPRODUCTION DISCLOSURE OR USE OF THIS DOCUMENT IS EXPRESSLY PROHIBITED EXCEPT OTHERWISE AGREED UPON IN WRITING.

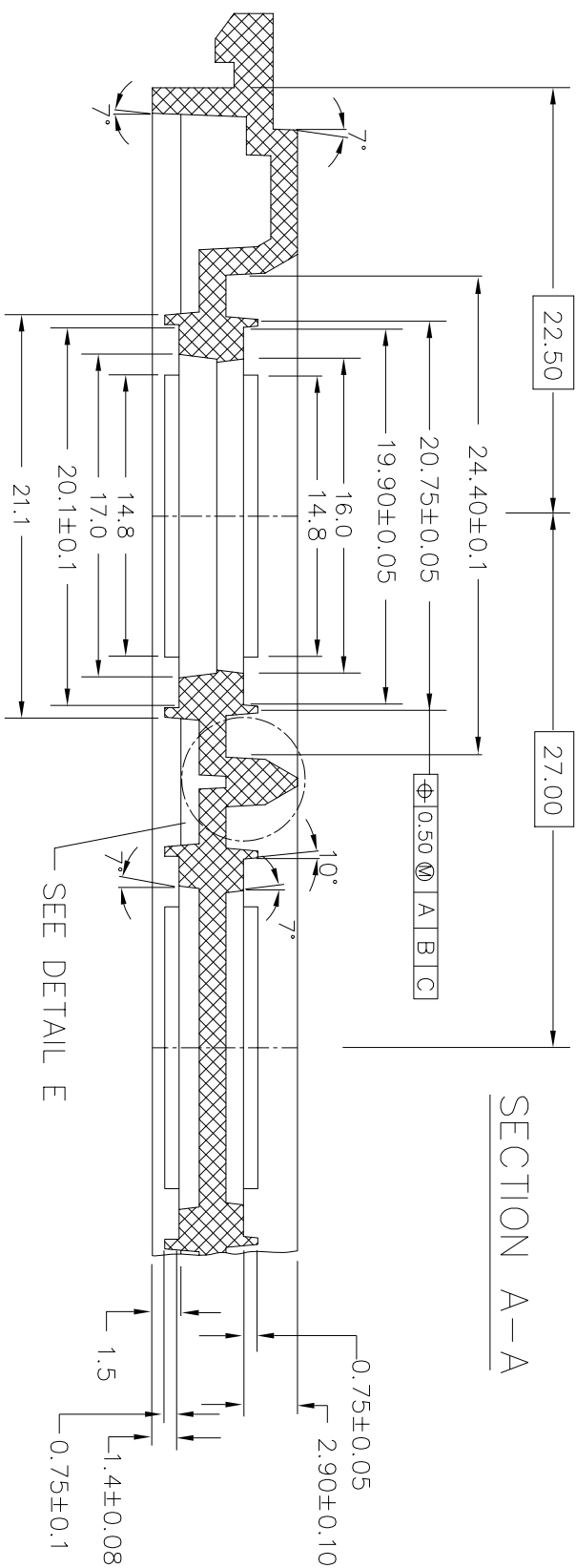
DRAWN BY : Qifang	PAGE 1 OF 2
CHECKED BY :	DATE : 15 SEP 98
APPROVED BY :	DATE : 15 SEP 98
APPROVED BY :	DATE : 15 SEP 98
DO NOT SCALE DRAWING	CODE : CSA00606

PEAK
PEAK PLASTIC & METAL PRODUCTS
(INTERNATIONAL) LTD.
UNIT 4, 5 & 7, 37/F., WING ON CABLE TOWER,
9 HOO SHING ROAD, TSUEN WAN, N.T.
HONG KONG

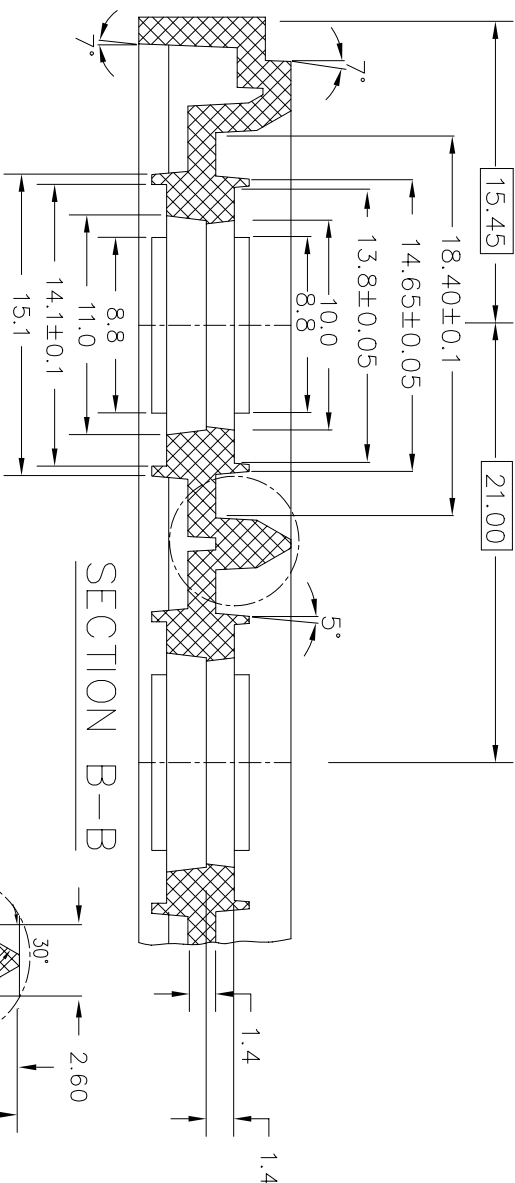
CUSTOMER : **PEAK**

TITLE : ND 1420 2.7 0611 6 REV.B

DWG NO. : ND 1420 2.7 0611 6 REV.B REV. 12



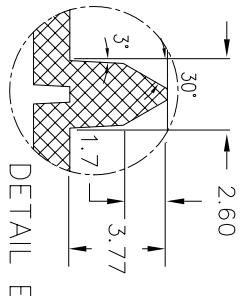
SECTION A-A



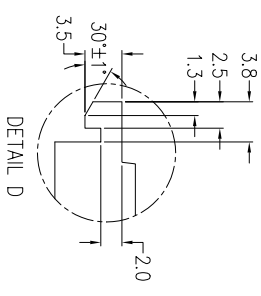
SECTION B-B

SECTION H-H

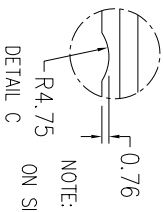
SECTION J-J



DETAIL E



DETAIL D



DETAIL C

NOTE: SCALLOP IS CENTERED ON SIDE OF TRAY

REV. NO.	ECN #	DESCRIPTION	DATE	APPROVED BY
12	P-00763	ADD RUNNER GATE & HOLE LOCATION	15 SEP 98	M.S.KHOO
11	P-00657	CHANGE POSITION, TOL	10 OCT 97	M.S.KHOO
10	P-00555	ADD DETAIL S AS MARKING	15 SEP 95	M.S.KHOO
9	P-00524	INCLUDE S9 REQUIREMENT	21 APR 95	M.S.KHOO
8	P-00503	CHANGE WALL THICKNESS TOL.	11 JAN 95	M.S.KHOO
7	P-00420	CHANGE TRAY MARKING	31 DEC 94	M.S.KHOO

THIS DOCUMENT CONTAINS INFORMATION PROPRIETARY TO PEAK PLASTIC & METAL PRODUCTS (INTERNATIONAL) LIMITED. REPRODUCTION DISCLOSURE OR USE OF THIS DOCUMENT IS EXPRESSLY PROHIBITED EXCEPT OTHERWISE AGREED UPON IN WRITING.

DRAWN BY:	Qifang	PAGE 2 OF 2
CHECKED BY:		DATE: 15 SEP 98
APPROVED BY:		DATE: 15 SEP 98
APPROVED BY:		DATE: 15 SEP 98
DO NOT SCALE DRAWING	CODE: CSA00606	

PEAK

PEAK PLASTIC & METAL PRODUCTS
(INTERNATIONAL) LTD.
UNIT 4, 5 & 7, 37/F., WHARF CABLE TOWER,
9 HOU SHING ROAD, TSUBEN WAN, N.T.
HONG KONG

CUSTOMER: **PEAK**

TITLE: ND 1420 2.7 0611 6 REV.B

DWG NO.: ND 1420 2.7 0611 6 REV.B

REV. 12