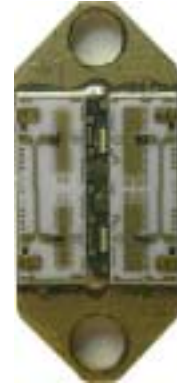


5.9 – 7.0 GHz 36 dBm Power Module

FEATURES

- P₁ dB: 36 dBm
- Small Signal Gain: 10 dB
- IP3: 45 dBm
- Bias Condition: 1300 mA @ 9 V



ELECTRICAL SPECIFICATIONS (Ta = 25 °C)

SYMBOL	DESCRIPTION	MIN	TYP	MAX	UNITS
FREQ	Frequency Range	5.9		7.0	GHz
SSG	Small Signal Gain	9	10		dB
GOF	SSG Flatness		± 0.3	± 0.5	dB
P₁ dB	Output Power at 1 dB Gain Compression	35	36		dBm
IP3	Third Order Intercept Point	44	45		dBm
VSWR, IN	Input VSWR		1.5:1	1.8:1	-
VSWR, OUT	Output VSWR		1.5:1	1.8:1	-
VDC	Supply Voltage		9		Volt
Vg	Gate Voltage	-1.6	-0.8	-0.4	Volt
IDC	Current Supply		1300	1500	mA

CARRIER: S31 / Z31