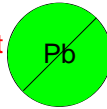


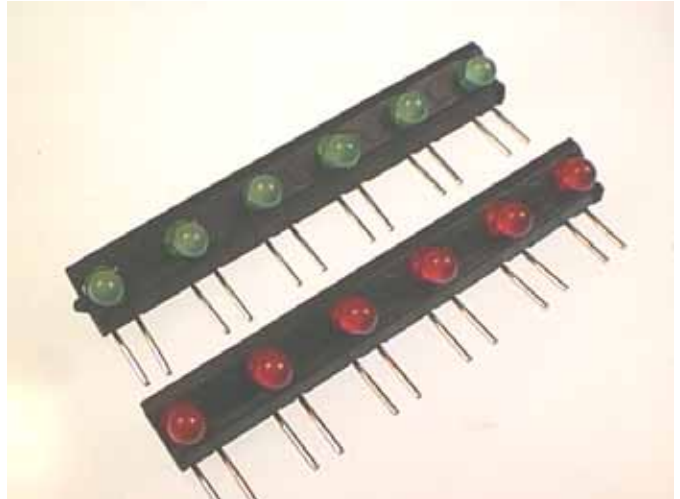
This component is RoHS compliant



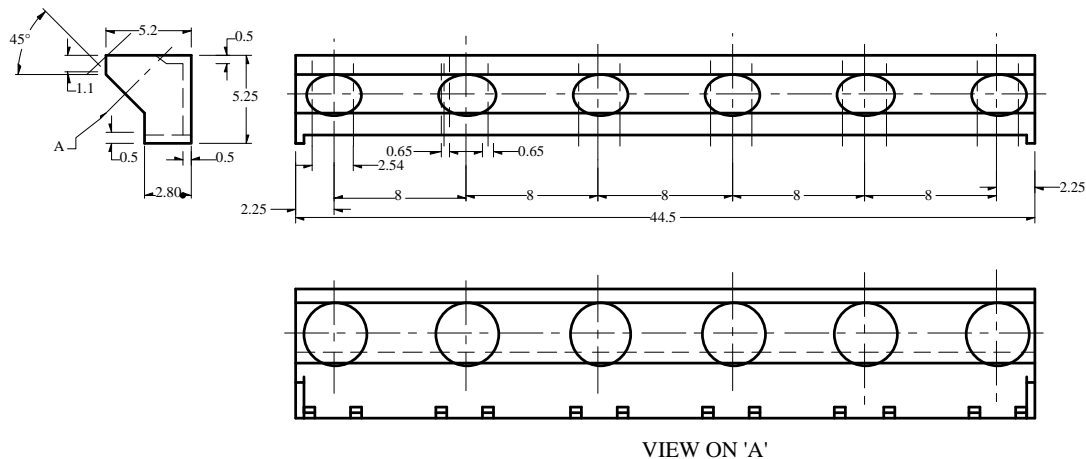
SSA 256 SERIES 45 degree mount 6 x 3mm LED ARRAY

The SSA 256 series is a family of display devices using a Black Nylon 6 UL-94VO rated housing to mount six 3mm LEDs, mounted at 45 deg to a PCB. In any one batch the LEDs are lumenous intensity and matched.

- Accurate alignment of LEDs.
- 8mm Pitch
- 45Deg Viewing Angle
- Low current and high brightness available



MECHANICAL DATA



BEDFORD OPTO TECHNOLOGY LTD
1 BIGGAR BUSINESS PARK, BIGGAR, LANARKSHIRE, ML12 6FX
Tel: +44 (0) 1899 221221 Fax: +44 (0) 1899 221009
Website: bot.co.uk E-mail: bill@bot.co.uk

ABSOLUTE MAXIMUM RATINGS (TA = 25°C)

Parameter	Red	Green	Yellow	Orange
Forward Current	15mA	30mA	20mA	30mA
Power Dissipation	40mW	100mW	60mW	100mW
Reverse Current @ 5V	10mA	10mA	10mA	10mA
Operating Temperature	-40°C to +85°C			
Storage Temperature	-40°C to 100°C			
Lead Soldering Temperature for 5sec (2.0mm from Body)	260°C			

OPTO ELECTRONIC DATA (Ta = 25°C)

COLOUR		Luminous Intensity If = 10mA mcd	Peak Wave-length nm	Viewing Angle Degrees	Forward Voltage If = 20mA volts
RED	min	2.0	-	-	1.7
	typ	4.2	697	50	-
YELLOW	min	7.5	-	-	1.7
	typ	12	585	50	-
GREEN	min	9.0	-	-	1.7
	typ	15	565	50	-
	ma	-	-	-	2.8
ORANGE	min	7.5	-	-	1.7
	typ	12	635	50	-

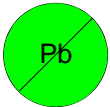
ORDERING INFORMATION

PART No. - **SSA256**

Indicate colour by using LEFT TO RIGHT R = Red
 Y = Yellow
 G = Green
 O = Orange
 B = Blank

Custom Part No.'s for Mixed Colours.

This component is RoHS compliant



BEDFORD OPTO TECHNOLOGY LTD
1,BIGGAR BUSINESS PARK, BIGGAR,LANARKSHIRE, ML12 6FX
 Tel: +44 (0) 1899 221221 Fax: +44 (0) 1899 221009
 Website: bot.co.uk E-mail: bill@bot.co.uk