

Description

- Complex type bipolar transistor

Feature

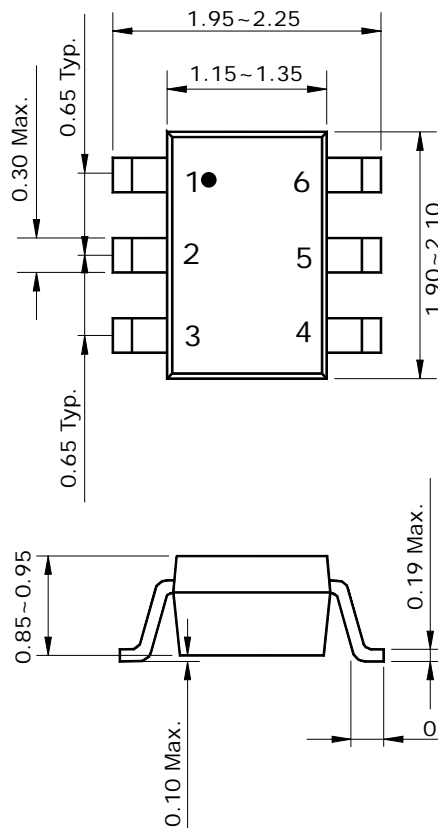
- Small package save PCB area
- Reduce quantity of parts and mounting cost
- Both SBT3906 chip and SBT3904 chip in SOT-363 package

Ordering Information

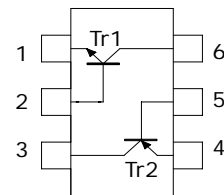
Type NO.	Marking	Package Code
SUT394J	PX	SOT-363

Outline Dimensions

unit : mm



• Equivalent Circuit



PIN Connections

1. Emitter 1
2. Base 1
3. Collector 2
4. Emitter 2
5. Base 2
6. Collector 1

Absolute Maximum Ratings [Tr1, Tr2]

(Ta=25°C)

Characteristic	Symbol	Rating		Unit
		Tr1	Tr2	
Collector-base voltage	V_{CBO}	60	-40	V
Collector-emitter voltage	V_{CEO}	40	-40	V
Emitter-base voltage	V_{EBO}	6	-5	V
Collector current	I_C	200	-200	mA
Collector power dissipation	P_C^*	200		mW
Junction temperature	T_J	150		°C
Storage temperature range	T_{stg}	-55 ~ 150		°C

※: Total rating

Electrical Characteristics [Tr1]

(Ta=25°C)

Characteristic	Symbol	Test Condition	Min.	Typ.	Max.	Unit
Collector-Base breakdown voltage	BV_{CBO}	$I_C=10\mu A, I_E=0$	60	-	-	V
Collector-Emitter breakdown voltage	BV_{CEO}	$I_C=1mA, I_B=0$	40	-	-	V
Emitter-Base breakdown voltage	BV_{EBO}	$I_E=10\mu A, I_C=0$	6	-	-	V
Collector cut-off current	I_{CEX}	$V_{CE}=30V, V_{EB}=3V$	-	-	50	nA
DC current gain	h_{FE}	$V_{CE}=1V, I_C=10mA$	100	-	300	-
Collector-Emitter saturation voltage	$V_{CE(sat)}$	$I_C=50mA, I_B=5mA$	-	-	0.3	V
Transition frequency	f_T	$V_{CE}=20V, I_C=10mA, f=100MHz$	300	-	-	MHz
Collector output capacitance	C_{ob}	$V_{CB}=5V, I_E=0, f=1MHz$	-	-	4	pF
Delay time	t_d		-	-	35	ns
Rise time	t_r		-	-	35	ns
Storage time	t_{stg}		-	-	200	ns
Fall Time	t_f		-	-	50	ns

Electrical Characteristics [Tr2]

(Ta=25°C)

Characteristic	Symbol	Test Condition	Min.	Typ.	Max.	Unit
Collector-Base breakdown voltage	BV_{CBO}	$I_C=-10\mu A, I_E=0$	-40	-	-	V
Collector-Emitter breakdown voltage	BV_{CEO}	$I_C=-1mA, I_B=0$	-40	-	-	V
Emitter-Base breakdown voltage	BV_{EBO}	$I_E=-10\mu A, I_C=0$	-5	-	-	V
Collector cut-off current	I_{CEX}	$V_{CE}=-30V, V_{EB}=-3V$	-	-	-50	nA
DC current gain	h_{FE}	$V_{CE}=-1V, I_C=-10mA$	100	-	300	-
Collector-Emitter saturation voltage	$V_{CE(sat)}$	$I_C=-50mA, I_B=-5mA$	-	-	-0.4	V
Transition frequency	f_T	$V_{CE}=-20V, I_C=-10mA, f=100MHz$	250	-	-	MHz
Collector output capacitance	C_{ob}	$V_{CB}=-5V, I_E=0, f=1MHz$	-	-	4.5	pF
Delay time	t_d		-	-	35	ns
Rise time	t_r		-	-	35	ns
Storage time	t_{stg}		-	-	225	ns
Fall Time	t_f		-	-	75	ns

Electrical Characteristic Curves

[Tr1]

Fig. 1 $I_C - V_{BE}$

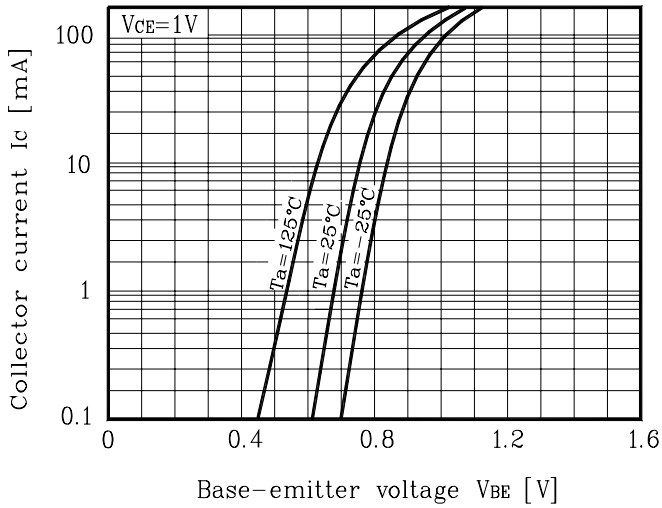


Fig. 2 $I_C - V_{CE}$

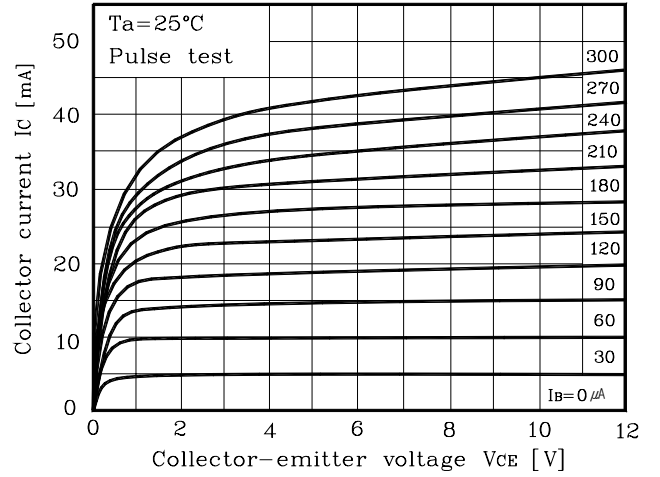


Fig. 3 $h_{FE} - I_C$

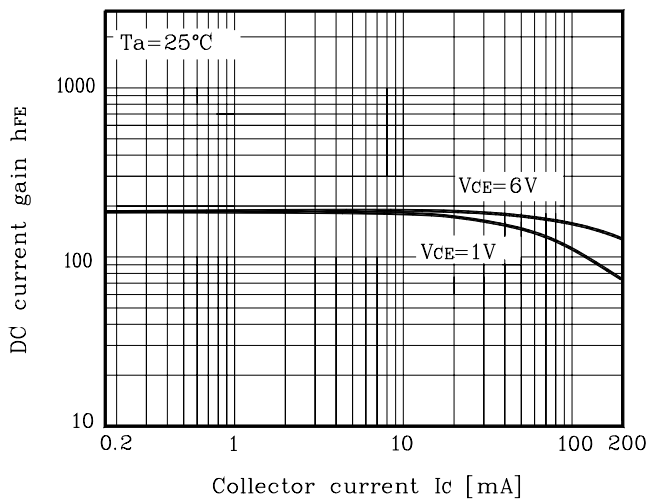
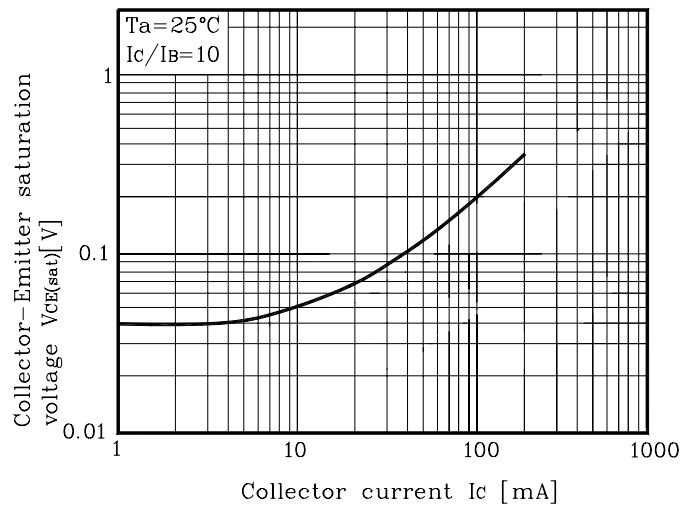


Fig. 4 $V_{CE(SAT)} - I_C$



Electrical Characteristic Curves

[Tr2]

Fig. 1 $I_C - V_{BE}$

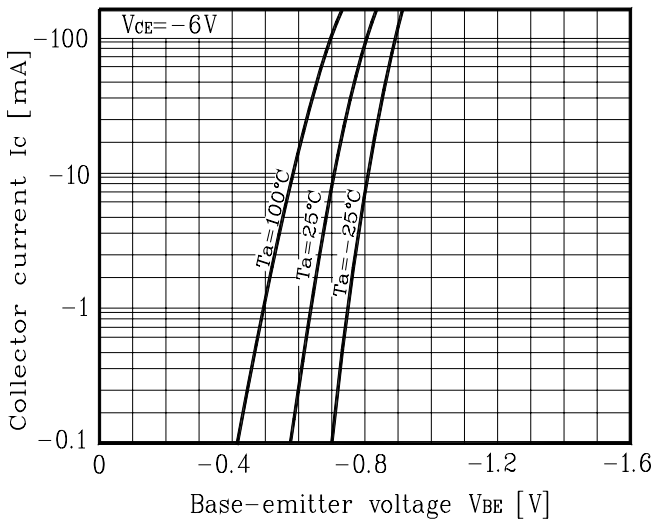


Fig. 2 $I_C - V_{CE}$

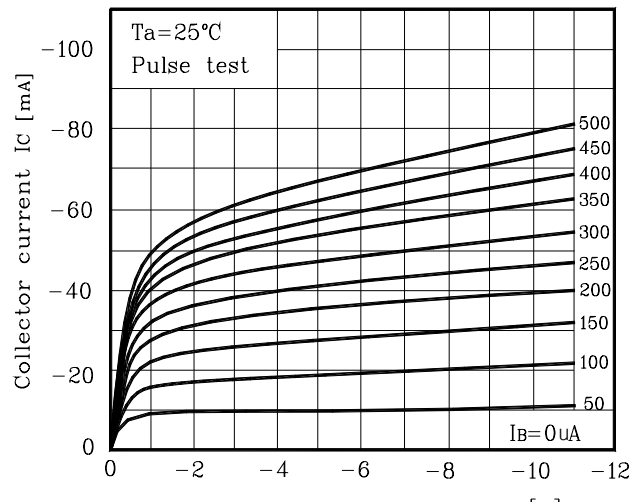


Fig. 3 $h_{FE} - I_C$

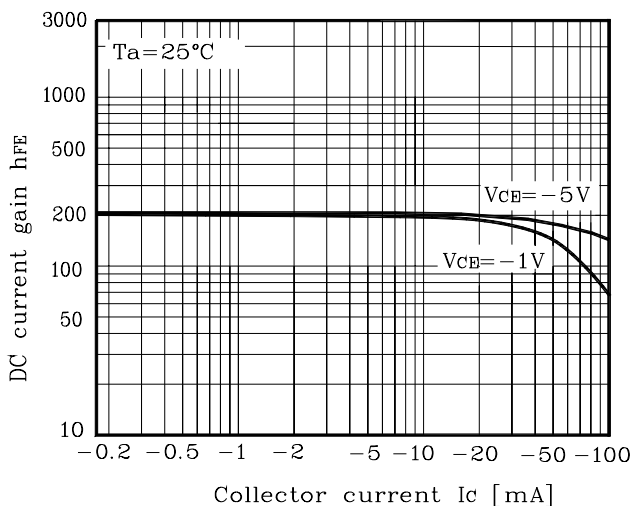
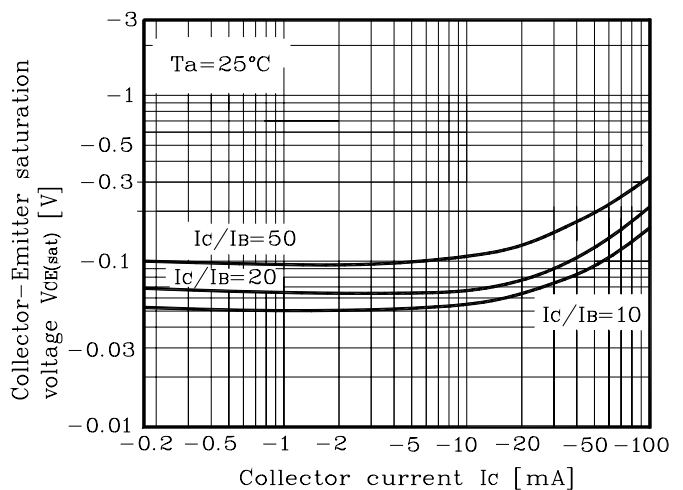


Fig. 4 $V_{CE(sat)} - I_C$



The AUK Corp. products are intended for the use as components in general electronic equipment (Office and communication equipment, measuring equipment, home appliance, etc.).

Please make sure that you consult with us before you use these AUK Corp. products in equipments which require high quality and / or reliability, and in equipments which could have major impact to the welfare of human life(atomic energy control, airplane, spaceship, transportation, combustion control, all types of safety device, etc.). AUK Corp. cannot accept liability to any damage which may occur in case these AUK Corp. products were used in the mentioned equipments without prior consultation with AUK Corp..

Specifications mentioned in this publication are subject to change without notice.