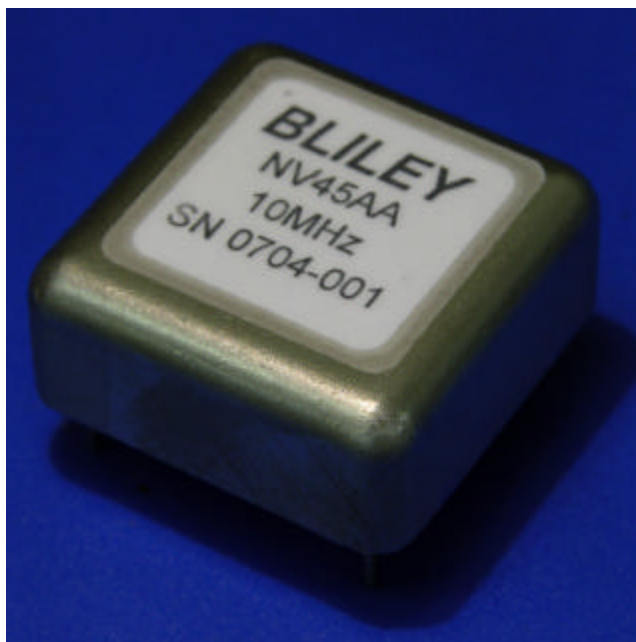


# Low Profile. OCXO NV45AA

## Description:

The NV45AA Ovenized Crystal Oscillator Series offers high stability performance in a low profile package ( 0.46 inches max. ) for base station, test equipment, synthesizers, and digital switching applications.



## Features:

- Available in frequencies from 5 MHz to 20MHz with
- CMOS and Sinewave output available
- RoHS-6/Leadfree compliant
- 5V, 12V and 15V available
- Phase Noise Options

## Frequency Versus Temperature

Operating Temperature	Frequency Range	Frequency Stability.	Frequency Stability	
				C1 and C2 for -20 to 70C D1 and D2 for -40 to 85C
-20 to 70 °C	5MHz to 20MHz	+/- 5 ppb	+/- 30 ppb	C1( +/- 5ppb ),C2( +/-30ppb )
-40 to 85 °C		+/- 30 ppb	+/- 50 ppb	D1( +/-30ppb ),D2( +/-50ppb )

## Aging

Frequency	Timeframe	Aging	Product Code
All	First Year	+/- 100 ppb	N/A

## Phase Noise

**Option A      Option B.....Option C**  
**Squarewave....Sinewave.....Sinewave**

1 Hz	-80 dBc/Hz	-90 dBc/Hz	-95 dBc/Hz
10 Hz	-115 dBc/Hz	-120 dBc/Hz	-125 dBc/Hz
100 Hz	-145 dBc/Hz	-150 dBc/Hz	-155 dBc/Hz
1 KHz	-150 dBc/Hz	-155 dBc/Hz	-160 dBc/Hz
10KHz	-155 dBc/Hz	-160 dBc/Hz	-165 dBc/Hz
100KHz	-155 dBc/Hz	-160 dBc/Hz	-165 dBc/Hz

**Option B and C not available with squarewave out**

## Supply Voltage & Power Consumption:

# Low Profile. OCXO NV45AA

5V +/- 5% ( Code A )	12V +/- 5% (Code B )	15V +/- 5% (Code C ) 4
4.0W turn on power	4.0W	4.0W
1.5W steady state power	1.5W	1.5W

### Output Waveform:

CMOS		Sinewave	
Waveform Description	Phase Noise Option A	Waveform Description	Phase Noise Option B or C
CMOS Output Levels (15pf load)	"0" < 0.5V; "1" > 4.5V	Output Power	8 dBm typ.
Rise / Fall Time	<10ns (10% to 90%)	harmonics	-25dBc
Duty Cycle	45% to 55% @ 50% Logic 1	spurious	-75 dBc

### Pulling Range:

Tuning Range ( 0V to 4V on Vcontrol )	None	+/-0.5 ppm min	+/- 1.5 ppm min
Product Code	A	B	C

### Environmental:

Storage Temperature	-55 to 125 °C
---------------------	---------------

### Ordering Options:

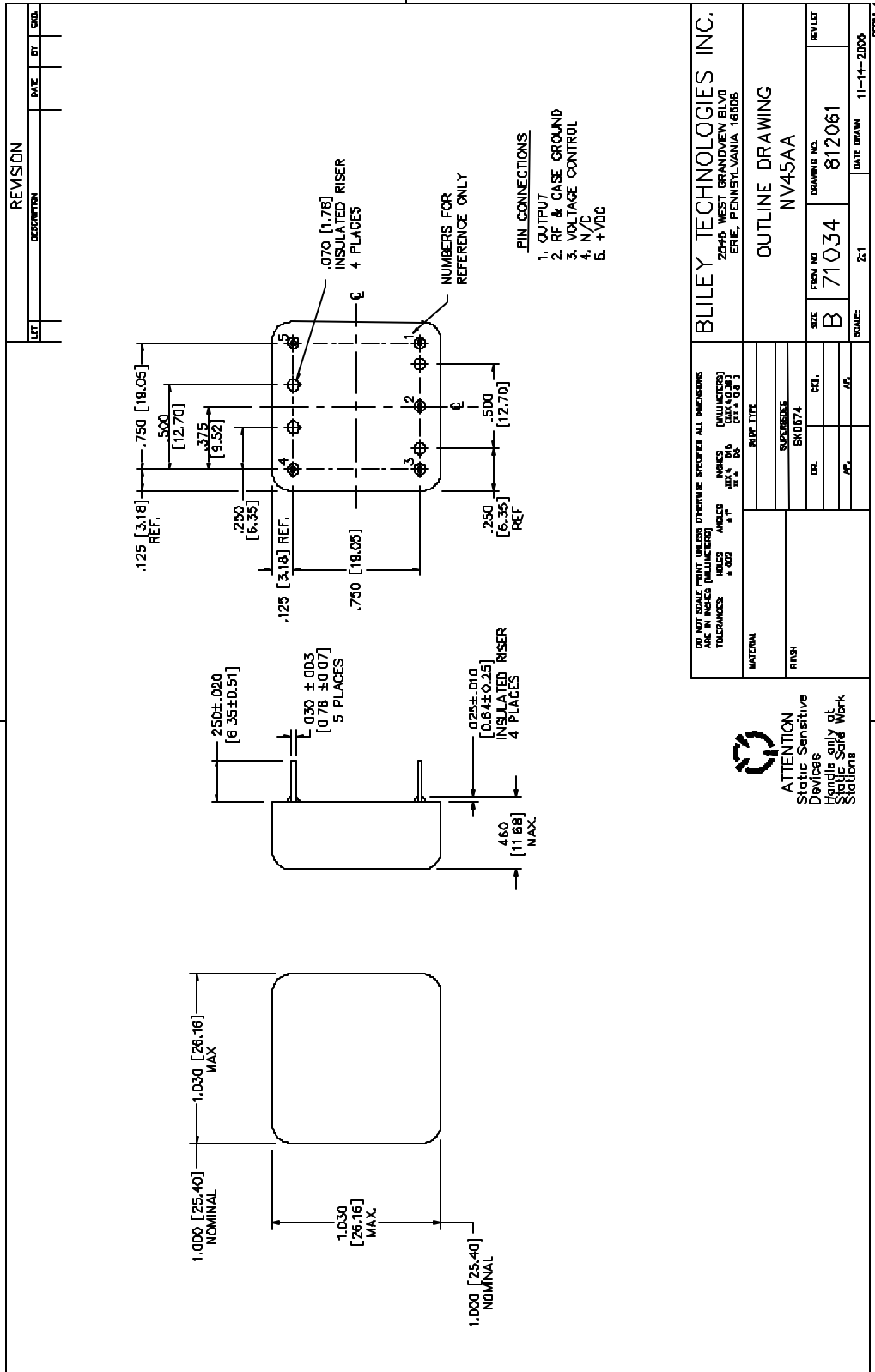
	Supply Voltage	Temp. Range	Temp. Stability	Pulling Range	Phase Noise	Freq.
R or NR	5V ( A )	C or D	C1 to D2	A,B, or C	A or B or C	xx.xxxxMhz
R or NR	12V ( B )	C or D	C1 to D2	A,B, or C	A or B or C	xx.xxxxMhz
R or NR	15V ( C )	C or D	C1 to D2	A,B, or C	A or B or C	xx.xxxxMhz


  
**NV45AA R B C C1 B C 10.0000MHz**

### Product Selection Code (refer to the above example):

This part is RoHS compliant, 12V supply, -20C to 70C, +/- 5ppb frequency vs. temperature stability referenced to 25C, +/- 0.5ppm pull, Sinewave, best phase noise (Option C ) at 10.0000MHz operating frequency

## Outline Drawing & Pin Out:





# Low Profile. OCXO NV45AA

## How to Order This Product:

Contact Bliley Technologies with Product Selection Code from the worksheet or Product Information Request Form.

**Attn:**

Sales @ Bliley

Fax: **814-833-2712**

Phone: 814-838-3571

Email: [info@bliley.com](mailto:info@bliley.com)

Web: [www.bliley.com](http://www.bliley.com)

Date: \_\_\_\_\_

**From:**

Name: \_\_\_\_\_ Company: \_\_\_\_\_

Fax: \_\_\_\_\_ Phone: \_\_\_\_\_

Email: \_\_\_\_\_

Quantities to Quote: \_\_\_\_\_ Target Price: \$ \_\_\_\_\_

Application / Reference #: \_\_\_\_\_