

5.0x7.0mm Surface Mount LVPECL Clock Oscillator Series



2111 Comprehensive Drive
Aurora, Illinois 60505
Phone: 630-851-4722
Fax: 630-851-5040
www.conwin.com

US Headquarters:
630-851-4722
European Headquarters:
+353-61-472221

Description

The Connor Winfield Pxxx - Series is a 5x7.0mm Surface Mount, LVPECL, Fixed Frequency Crystal Controlled Oscillator (XO) designed for applications requiring tight frequency stability, wide temperature range and low jitter. Operating at 2.5V or 3.3V supply voltage, the Pxxx - Series provides an LVPECL Differential Outputs with enable / disable function. The surface mount package is designed for high-density mounting and is optimum for mass production.



Features:

Model Pxxx - Series

5.0 x7.0mm Surface Mount Package
2.5V or 3.3V Operation
LVPECL Output Logic
Frequency Stabilities Available:
P14x / P24x / P34x / P44x: +/-20ppm
P11x / P21x / P31x / P41x: +/-25ppm
P12x / P22x / P32x / P42x: +/-50ppm
P13x / P23x / P33x / P43x: +/-100ppm
Temperature Ranges Available:
P1xx Series: 0 to 70°C
P2xx Series: -40 to 85°C
P3xx Series: 0 to 85°C
P4xx Series: -20 to 70°C
Low Jitter <1pS RMS
Tri-State Enable/Disable
Tape and Reel Packaging
RoHS Compliant / Lead Free

Model Specifications

Absolute Maximum Ratings

Table 1.0

| Parameter | Units | Minimum | Nominal | Maximum | Units | Note |
|---------------------|-------|---------|---------|---------|-------|------|
| Storage Temperature | | -55 | - | 125 | °C | |
| Supply Voltage | (Vcc) | -0.5 | - | 7.0 | Vdc | |
| Input Voltage | | -0.5 | - | Vcc+0.5 | Vdc | |

Operating Specifications

Table 2.0

| Parameter | | Minimum | Nominal | Maximum | Units | Note |
|--|-------|------------------------------------|---------|---------|--------|------|
| Center Frequency | (Fo) | 25 | - | 260 | MHz | |
| Total Frequency Tolerance | | (See Table 9 for full part number) | | | | |
| Model Px4x (See Table 9) | | -20 | - | 20 | ppm | 1 |
| Model Px1x (See Table 9) | | -25 | - | 25 | ppm | 1 |
| Model Px2x (See Table 9) | | -50 | - | 50 | ppm | 1 |
| Model Px3x (See Table 9) | | -100 | - | 100 | ppm | 1 |
| Operating Temperature Range | | | | | | |
| Model P1xx (See Table 9) | | 0 | - | 70 | °C | |
| Model P4xx (See Table 9) | | -20 | - | 70 | °C | |
| Model P3xx (See Table 9) | | 0 | - | 85 | °C | |
| Model P2xx (See Table 9) | | -40 | - | 85 | °C | |
| Supply Voltage | (Vcc) | | | | | |
| Model Pxx2 (See Table 9) | | 2.375 | 2.500 | 2.625 | Vdc | |
| Model Pxx3 (See Table 9) | | 3.135 | 3.3 | 3.465 | Vdc | |
| Supply Current | (Icc) | - | 60 | 90 | mA | |
| Period Jitter | | - | 3 | 5 | ps RMS | |
| Phase Jitter- BW=12kHz to 20MHz (Fo >70M) | | - | 0.5 | 1.0 | ps RMS | |
| Phase Jitter- BW=12kHz to 20MHz (Fo ≤ 70M) | | - | 1.5 | 2.0 | ps RMS | |
| SSB Phase Noise at 10Hz offset | | - | -60 | - | dBc/Hz | |
| SSB Phase Noise at 100Hz offset | | - | -90 | - | dBc/Hz | |
| SSB Phase Noise at 1KHz offset | | - | -125 | - | dBc/Hz | |
| SSB Phase Noise at 10KHz offset | | - | -140 | - | dBc/Hz | |
| SSB Phase Noise at 100KHz offset | | - | -145 | - | dBc/Hz | |
| Startup Time | | - | - | 2 | ms | |

Input Characteristics

Table 3.0

| Parameter | | Minimum | Nominal | Maximum | Units | Note |
|---|-------|---------|---------|---------|-------|------|
| Disable Input Voltage (Low) | (Vil) | - | - | 0.3Vcc | Vdc | 2 |
| Enable Input Voltage (High) | (Vih) | 0.7Vcc | - | - | Vdc | 2 |
| Enable Time | | - | - | 2 | ms | |
| Disable Time | | - | - | 200 | ns | |
| Standby Current (when part is Disabled) | (Icc) | - | - | 30 | uA | |

LVPECL Output Characteristics

Table 4.0

| Parameter | | Minimum | Nominal | Maximum | Units | Note |
|-----------------------------|-------|---------|---------|---------|-------|------|
| LOAD | | - | - | 50 | Ohms | 3 |
| Voltage (Vcc = 2.5V) (High) | (Voh) | 1.475 | - | - | Vdc | |
| (Vcc = 2.5V) (Low) | (Vol) | - | - | 0.880 | Vdc | |
| Voltage (Vcc = 3.3V) (High) | (Voh) | 2.275 | - | - | Vdc | |
| (Vcc = 3.3V) (Low) | (Vol) | - | - | 1.68 | Vdc | |
| Duty Cycle | | 45 | 50 | 55 | % | 4 |
| Rise / Fall Time 20% to 80% | | - | 0.5 | 1 | ns | |



Bulletin **Ec217**
Page **1 of 2**
Revision **06**
Date **18 Apr 2008**



Notes

- Notes
- 1) Includes initial tolerance, deviation over temperature, supply and load variations, shock, vibration and 20 years aging.
 - 2) When the oscillator is disabled, the outputs are at High Impedance. Output is enabled with no connection on pad 1.
 - 3) Output must be terminated into 50 ohms to Vcc - 2V or Thevenin equivalent.
 - 4) Duty Cycle measured at 50% of output swing.

Ordering Information

| | | | | | |
|---|---|--|--|----------|--|
| P | 1 | 2 | 3 | - | 155.52M |
| Type: LVPECL Clock Series 5x7mm | Temperature Range: 1 = 0 to 70° C 2 = -40 to 85° C 3 = 0 to 85° C 4 = -20 to 70° C | Frequency Stability: 4 = +/-20 ppm 1 = +/-25 ppm 2 = +/-50 ppm 3 = +/-100 ppm | Supply Voltage: 2 = 2.5Vdc. 3 = 3.3Vdc. | | Output Frequency: Frequency Format -xxx.xM Min.* -xxx.xxxxxM Max.* *Amount of numbers after the decimal point. M = MHz |

Example: P123-155.52M = LVPECL Clock, 0 to 70°C, +/-50ppm, 3.3Vdc @ 155.52 MHz

Package Characteristics

Table 5.0

| | |
|-------------------|--|
| Package | Hermetically sealed ceramic package and metal cover. |
| Soldering Process | RoHS compliant, see solder profile on page 2. |

Environmental Characteristics

Table 6.0

| | |
|---------------|---|
| Vibration: | Vibration per Mil Std 883E Method 2007.3 Test Condition A |
| Shock: | Mechanical Shock per Mil Std 883E Method 2002.4 Test Condition B. |
| Soldering: | SMD product suitable for Convection Reflow soldering. Peak temperature 260 C. Maximum time above 220 C, 60 seconds. |
| Solderability | Solderability per Mil Std 883E Method 2003 |

Pad Connections - Enable / Disable Function

Table 7.0

| Pad | Connection |
|-----|------------------|
| 1 | Enable / Disable |
| 2 | N/C |
| 3 | Ground |
| 4 | Q Output |
| 5 | Q̄ Output |
| 6 | Vcc |

Table 8.0

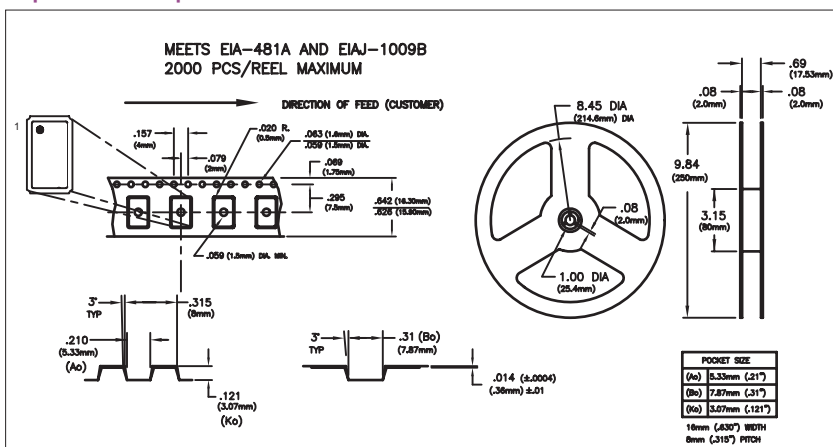
| Enable / Disable Function (Pad 1) | Output |
|-----------------------------------|--------------------------|
| High or Open | Enable |
| Low | Disable (High Impedance) |

Model Matrix

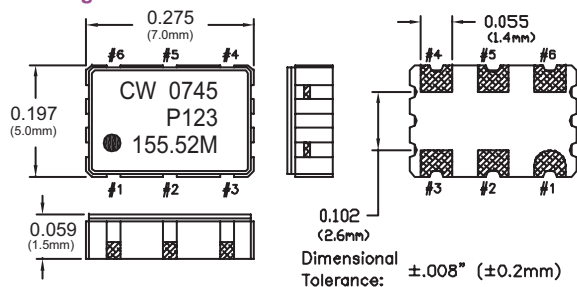
Table 9.0

| Frequency Tolerance ±20ppm | Frequency Tolerance ±25ppm | Frequency Tolerance ±50ppm | Frequency Tolerance ±100ppm | Supply Voltage | Temperature Range |
|----------------------------|----------------------------|----------------------------|-----------------------------|----------------|-------------------|
| P142 | P112 | P122 | P132 | 2.5Vdc | 0 to 70°C |
| P442 | P412 | P422 | P432 | 2.5Vdc | -20 to 70°C |
| P342 | P312 | P322 | P332 | 2.5Vdc | 0 to 85°C |
| P242 | P212 | P222 | P232 | 2.5Vdc | -40 to 85°C |
| P143 | P113 | P123 | P133 | 3.3Vdc | 0 to 70°C |
| P443 | P413 | P423 | P433 | 3.3Vdc | -20 to 70°C |
| P343 | P313 | P323 | P333 | 3.3Vdc | 0 to 85°C |
| P243 | P213 | P223 | P233 | 3.3Vdc | -40 to 85°C |

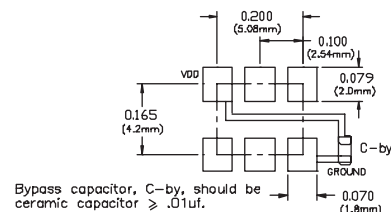
Tape and Reel Specifications



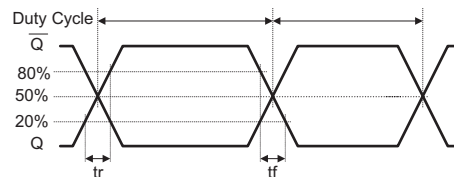
Package Outline



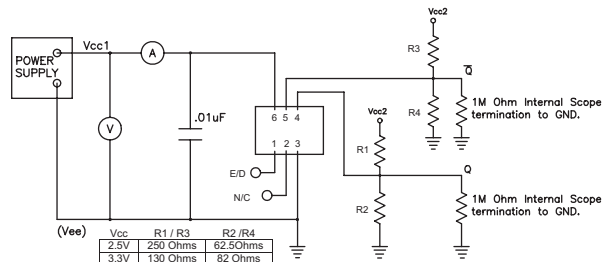
Suggested Pad Layout



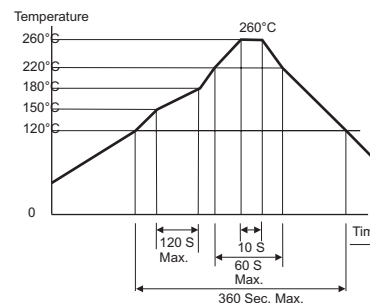
LVPECL Output Waveform



Test Circuit



Solder Profile



US Headquarters:
630-851-4722
European Headquarters:
+353-61-472221

| | |
|----------|-------------|
| Bulletin | Ec217 |
| Page | 2 of 2 |
| Revision | 06 |
| Date | 18 Apr 2008 |