


### Specifications

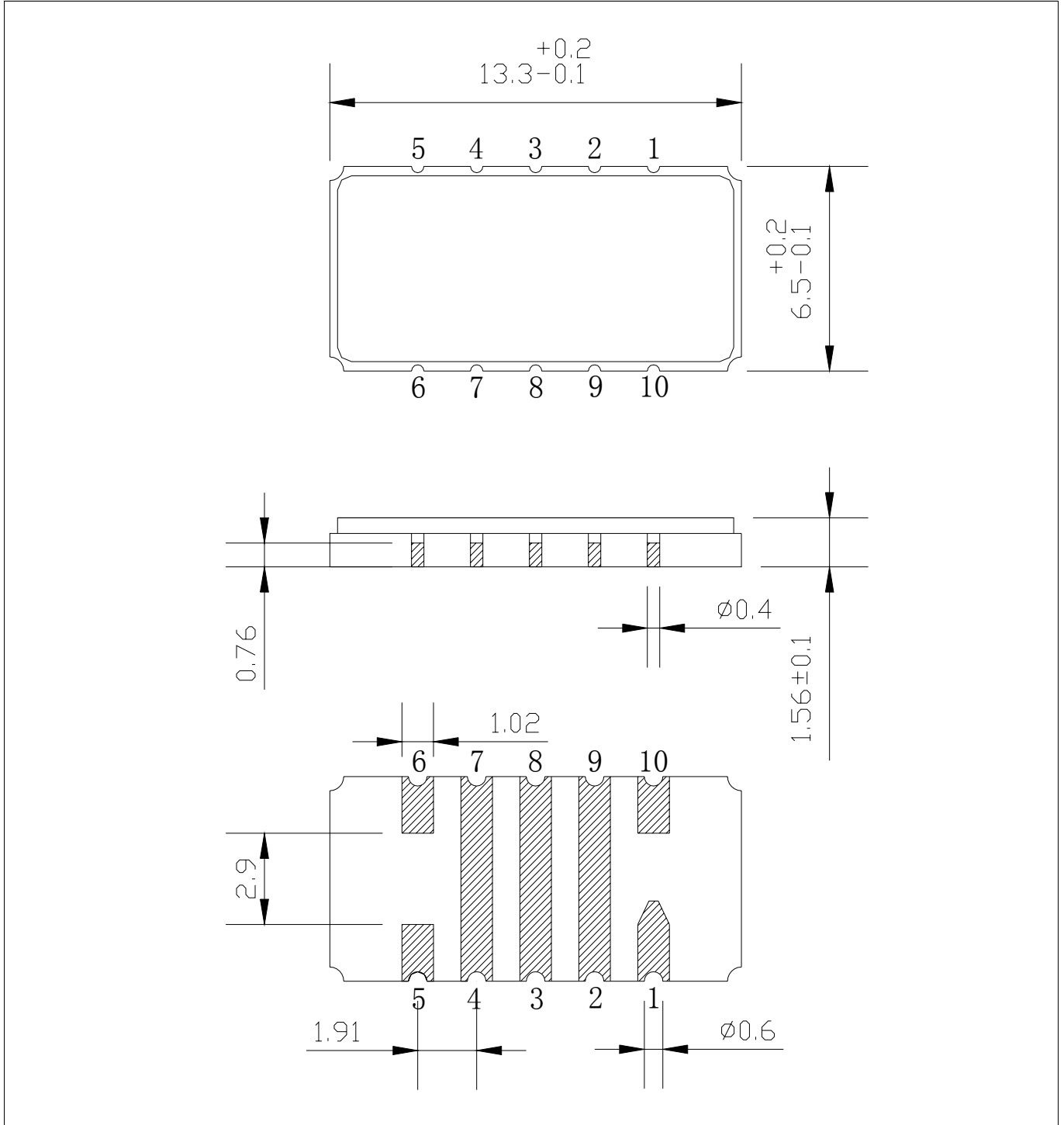
Parameter	Unit	Minimum	Typical	Maximum
Source Impedance (1)		-	50	-
Load Impedance (1)		-	50	-
Center Frequency	MHz	149.925	150.025	150.125
Bandwidth at -1 dB	MHz	5.6	5.677	-
Bandwidth at -3 dB	MHz	6.0	6.19	-
Bandwidth at -40 dB	MHz	-	8.129	8.2
Attenuation from 10 MHz to 135 MHz	dB	45	55	-
Attenuation from 165 MHz to 1GHz	dB	45	50	-
Minimum Insertion Loss (1)	dB		20	22
Amplitude Variation (over 5.6 MHz bandwidth) (2)	dB	-	0.33	0.8
Group Delay Variation (over 5.6 MHz bandwidth) (3)	ns	-	100	150
Input/Output VSWR			1.45	1.8
Absolute Group Delay at fo	us		1.67	2.1
Maximum Input Level	dBm			20
<i>Package type &amp; size</i>				
Length x Width	mm <sup>2</sup>		13.3X6.5	
Height	mm		1.8	2.1
<i>Pin Out</i>				
input	10	output	5	
Case Ground	1,2,3,4,6,7,8,9			


#### Notes:

- (1) With external Matching Network.
- (2) The amplitude variation is defined as the maximum level – minimum level over the given bandwidth.
- (3) The group delay variation is defined as the maximum level – minimum level over the given bandwidth.

	<b>SIPAT Co., Ltd.</b> ( CETC No. 26 Research Institute ) Nanping Huayuan Road No. 14 Chongqing, China, 400060	Part Number	SIPAT LBT15007	
		Rev. Date	2004-7-19	
		Version	1.0	Page

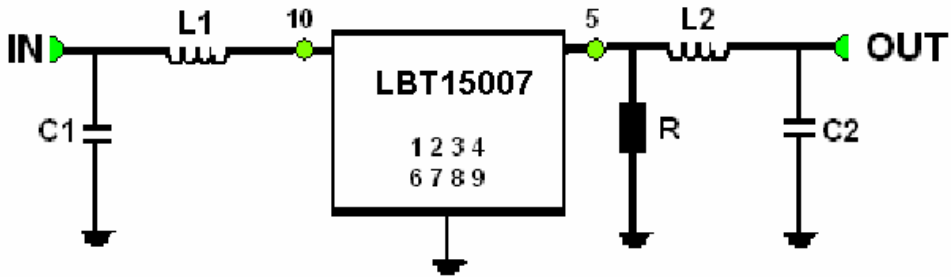
Package Dimension




	<b>SIPAT Co., Ltd.</b> ( CETC No. 26 Research Institute ) Nanping Huayuan Road No. 14 Chongqing, China, 400060	Part Number	SIPAT LBT15007	
		Rev. Date	2004-7-19	
		Version	1.0	Page

*Matching Schematic*

Actual matching values may vary due to PCB layout and parasitics

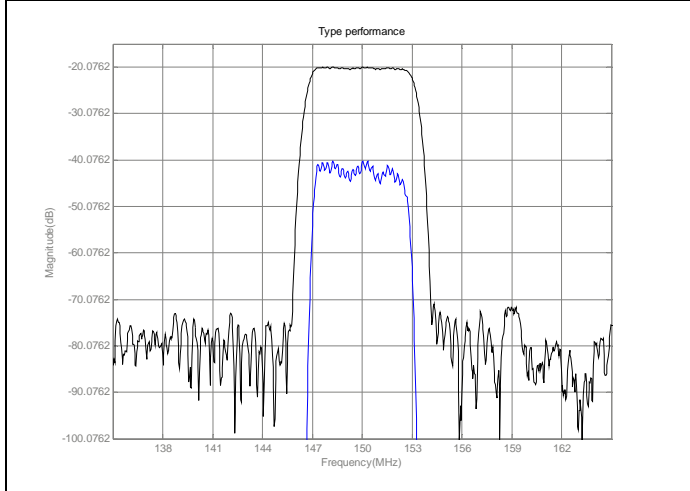


L1=33nH    L2=27 nH    R=51 ohm  
C1=56PF    C2=56PF

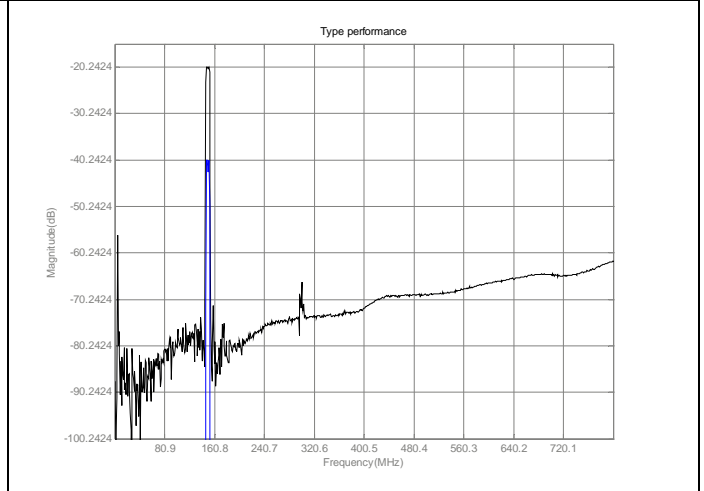
	<b>SIPAT Co., Ltd.</b> ( CETC No. 26 Research Institute ) Nanping Huayuan Road No. 14 Chongqing, China, 400060	Part Number	SIPAT LBT15007	
		Rev. Date	2004-7-19	
		Version	1.0	Page

Typical Performance

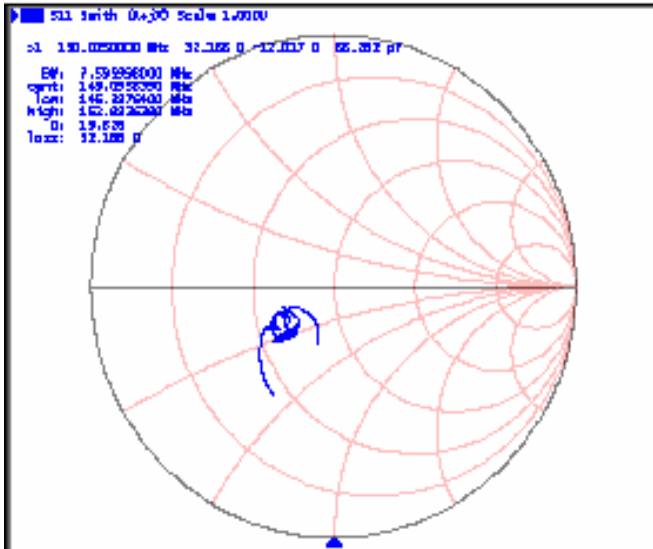
Frequency Respond



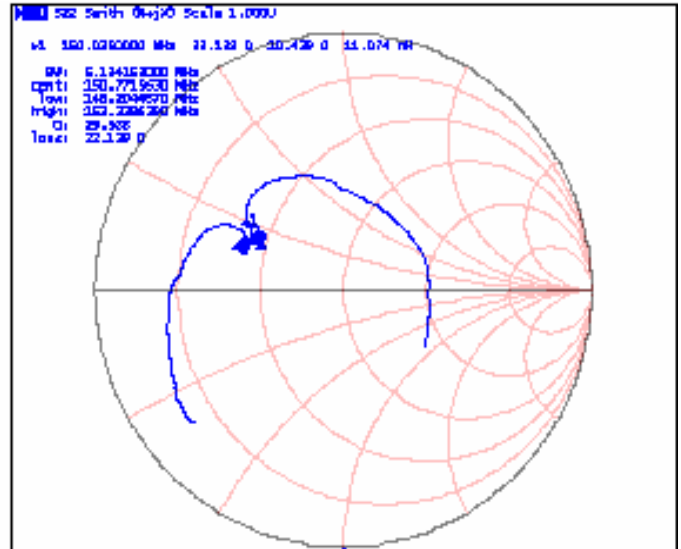
Passband Respond



Input Smith Chart



Output Smith Chart



**SIPAT Co., Ltd.**  
( CETC No. 26 Research Institute )  
Nanping Huayuan Road No. 14  
Chongqing, China, 400060

Part Number	SIPAT LBT15007	
Rev. Date	2004-7-19	
Version	1.0	Page 4/4