



IP SPECIFICATIONS

2.45GHz Transmitter/Receiver Switch

ARF80001-a

KEY FEATURES

- RF frequency range : 2.35GHz to 2.65GHz
- Supply voltage : 3V to 3.3V
- Insertion loss : 3.0dB
- Isolation: >32dB
- 2nd harmonic compression: 65dBc
- 3rd harmonic compression: 68dBc
- Die size : 844um by 496um
- Process : 0.18um RF CMOS

GENERAL DESCRIPTION

The **AF80001** is a high frequency, high isolation TX/RX switch. It operates at the frequency of 2.35GHz to 2.65GHz. The device has an insertion loss of 3.0dB and operates over a supply range of +3V to +3.3V.

The AF80001 features 2 integrated harmonic traps at 2nd and 3rd harmonic. The 2nd harmonic and 3rd harmonic compression is measured at 65dBc and 68dBc respectively. The device also features very high port-to-port isolation at more than 32dB.

APPLICATION

2.45GHz ISM Wireless LAN

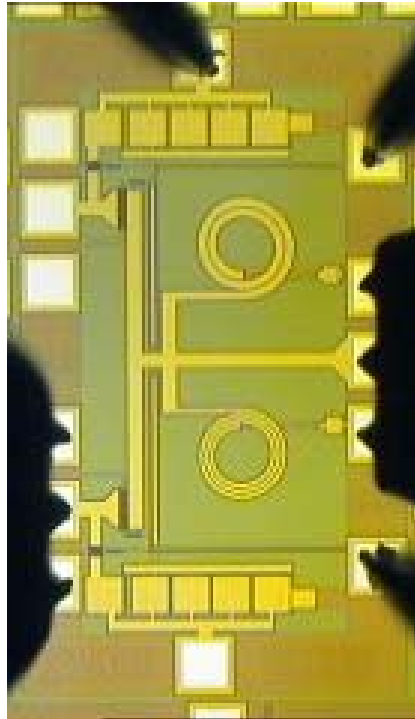


Figure 1: ARF80001-a

ORDERING INFORMATION

Please contact Advanced RFIC at:

Telephone : +65 6316 1779
Fax : +65 6316 1769
Email : business@arfic.com
Website : <http://www.arfic.com>

© ARFIC S. 2003

All rights are reserved. Reproduction in a whole or in part is prohibited without the prior written consent of the copyright owner.

The information presented in this document does not form part of any quotation or contract, is believed to be accurate and reliable and may be changed without notice. No liability will be accepted by the publisher for any consequence of its use. Publication thereof does not convey nor imply any license under patent- or other industrial or intellectual property rights.

Printed in Singapore

Date of release: 2003 Feb