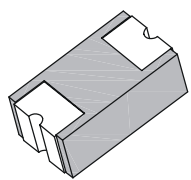


100mA Low Profile Chip Schottky Rectifier

Features

- Low profile with SMD package
- Low power loss , High efficiency
- High current capability, Low voltage drop
- Plastic package has Underwriters Laboratory Flammability Classification 94V-0
- RoHS compliant



**C0603
(SOD-523)**



Mechanical Data

Case:	0603 SMD package, Molded plastic body
Terminals:	Pure Tin plated, solderable per MIL-STD-750, Method 2026
Polarity	Laser cathode band marking
Weight:	2.68 mg

Maximum Ratings ($T_{Ambient}=25^{\circ}C$ unless noted otherwise)

Symbol	Description	TSCD012WT	TSCD014WT	Unit	Conditions
	Marking Code	2F	4F		
VRRM	Repetitive Peak Reverse Voltage	20	40	V	
VRWM	Working Peak Reverse Voltage	20	40	V	
IF(AV)	Forward Rectified Current	100		mA	
IFSM	Non-repetitive Peak Forward Surge Current	2.0		A	8.3ms single half sine-wave
TJ	Operating Junction temperature range	-40 to +125		° C	
TSTG	Storage Temperature Range	-40 to +125		° C	

Electrical Characteristics ($T_{Ambient}=25^{\circ}C$ unless noted otherwise)

Symbol	Description	TSCD012WT	TSCD014WT	Unit	Conditions
VF	Forward Voltage	0.40		V	IF= 0.1A
IR	Reverse Current	50		µA	Maximum DC Reverse Current at Rated DC Blocking Voltage
		20			Maximum DC Reverse Current at 10 V

100mA Low Profile Chip Schottky Rectifier

TSCD012WT-TSCD014WT

Typical Characteristics Curves

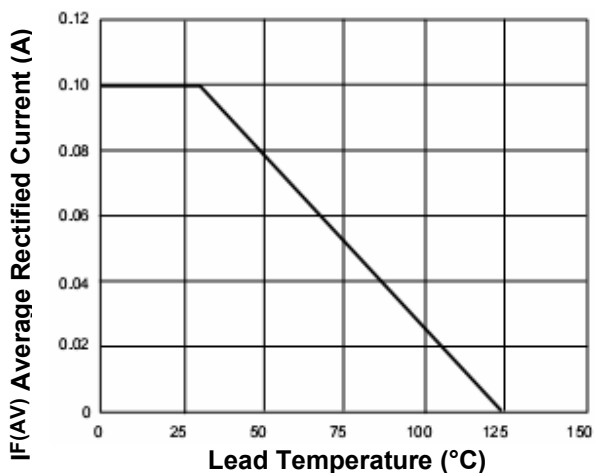


Fig.1- Forward Current Derating Curve

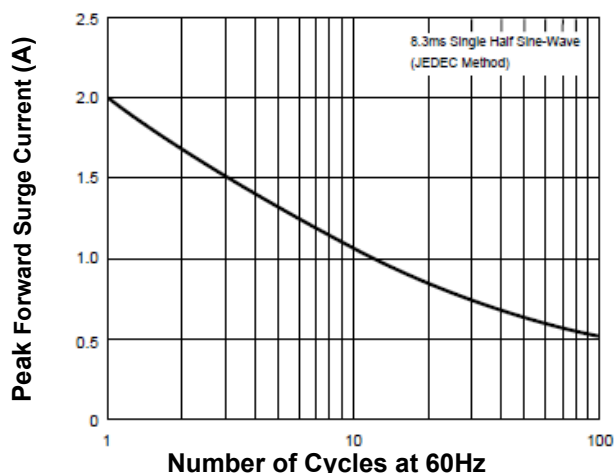
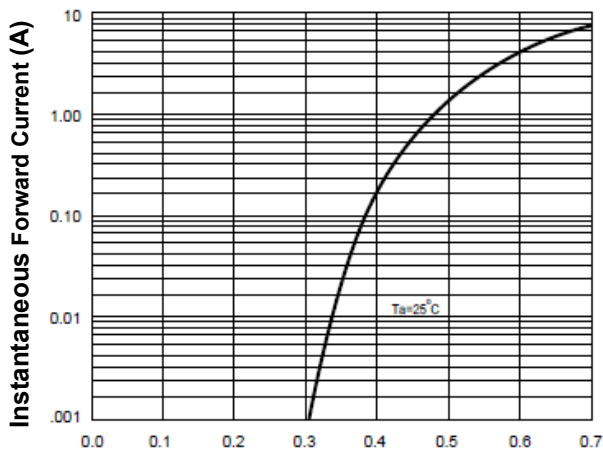
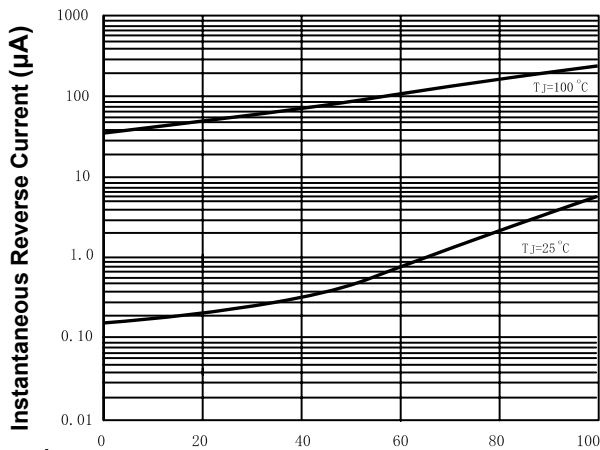


Fig.2- Max. Non-Repetitive Forward Surge Current



Instantaneous Forward Voltage (V)
Fig.3- Typical Forward Characteristics



Percent Of Rated Peak Reverse Voltage(%)
Fig.4- Typical Reverse Characteristics

100mA Low Profile Chip Schottky Rectifier

TSCD012WT-TSCD014WT

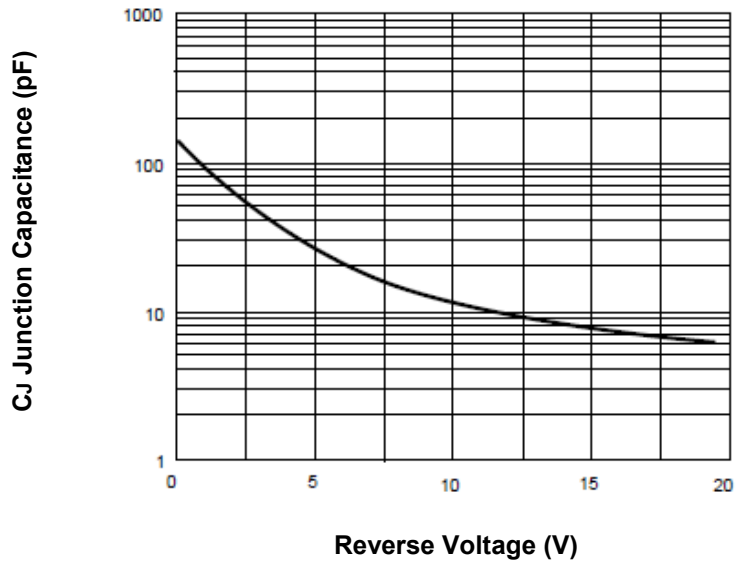
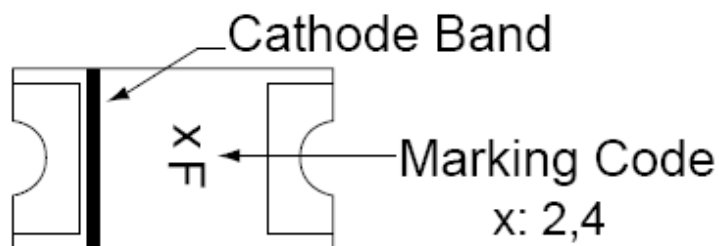


Fig.5-Typical junction capacitance

Marking Information:

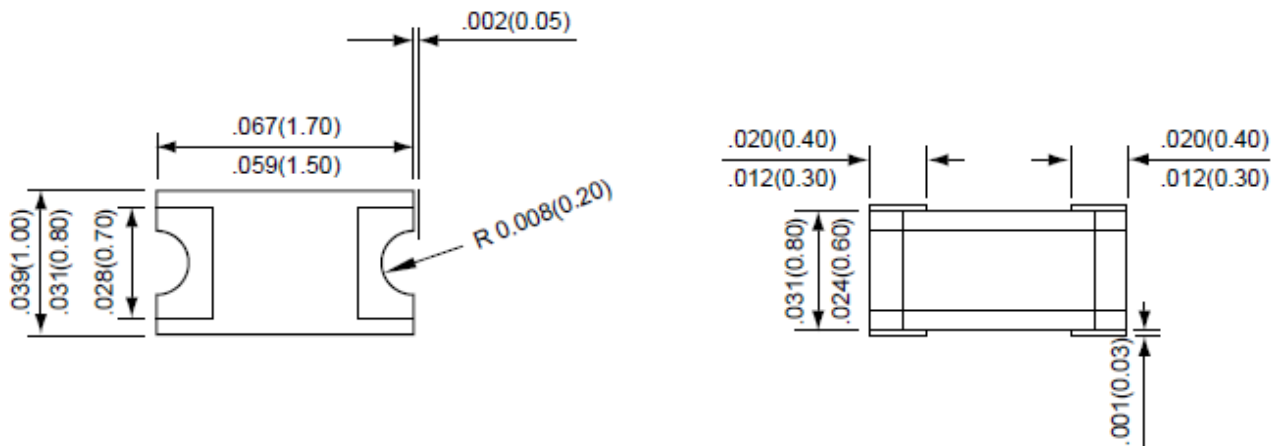


100mA Low Profile Chip Schottky Rectifier

TSCD012WT-TSCD014WT

Dimensions in inch (mm)

C0603
(SOD-523)



How to contact us:

US HEADQUARTERS

28040 WEST HARRISON PARKWAY, VALENCIA, CA 91355-4162

Tel: (800) TAITRON (800) 824-8766 (661) 257-6060

Fax: (800) TAITFAX (800) 824-8329 (661) 257-6415

Email: taitron@taitroncomponents.com

Http://www.taitroncomponents.com

TAITRON COMPONENTS MEXICO, S.A .DE C.V.

BOULEVARD CENTRAL 5000 INTERIOR 5 PARQUE INDUSTRIAL ATITALAQUIA, HIDALGO C.P.
42970 MEXICO

Tel: +52-55-5560-1519

Fax: +52-55-5560-2190

TAITRON COMPONENTS INCORPORATED REPRESENTAÇÕES DO BRASIL LTDA

RUA DOMINGOS DE MORAIS, 2777, 2.ANDAR, SALA 24 SAÚDE - SÃO PAULO-SP 04035-001 BRAZIL

Tel: +55-11-5574-7949

Fax: +55-11-5572-0052

TAITRON COMPONENTS INCORPORATED, SHANGHAI REPRESENTATIVE OFFICE

METROBANK PLAZA, 1160 WEST YAN' AN ROAD, SUITE 1503, SHANGHAI, 200052, CHINA

Tel: +86-21-5424-9942

Fax: +86-21-5424-9931