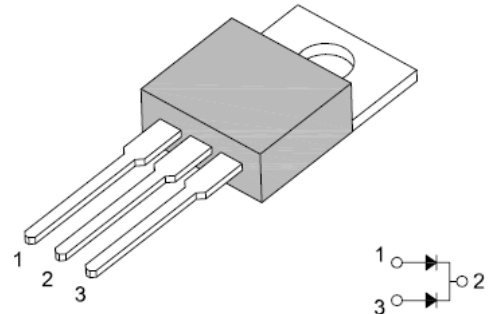


**16A Super Fast Recovery Rectifiers**

**Features**

- Glass passivated chip junction
- Super fast recovery times, high voltage
- Low power loss, high efficiency
- Low forward voltage, high current capability
- High surge current capability
- RoHS Compliance



**TO-220**



**Mechanical Data**

<b>Case:</b>	TO-220, molded plastic
<b>Epoxy:</b>	Plastic package has UL flammability classification 94V-0
<b>Terminals:</b>	Lead, solderable per MIL-STD-202, Method 208
<b>Polarity:</b>	As marked
<b>Mounting Torque:</b>	10 in-lbs maximum
<b>Weight:</b>	0.08 ounces, 2.24 grams

**Maximum Ratings and Electrical Characteristics** ( $T_A=25^{\circ}C$  unless noted otherwise)

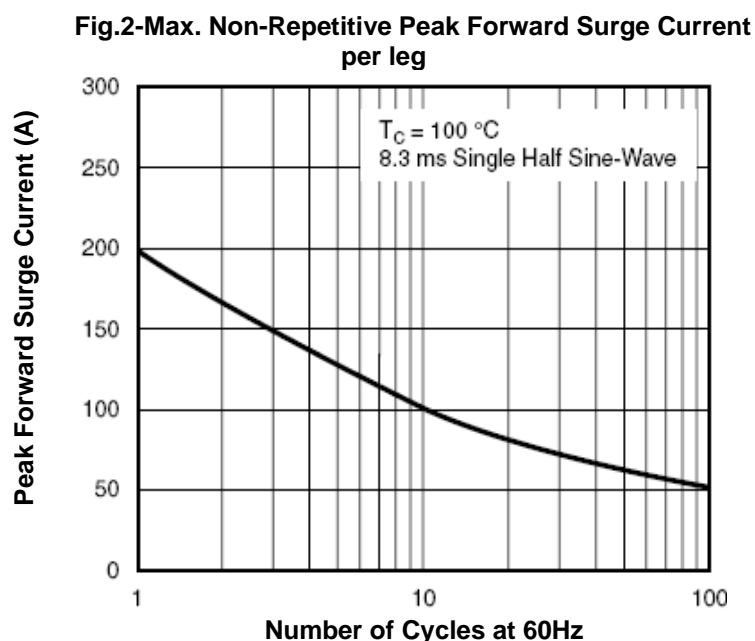
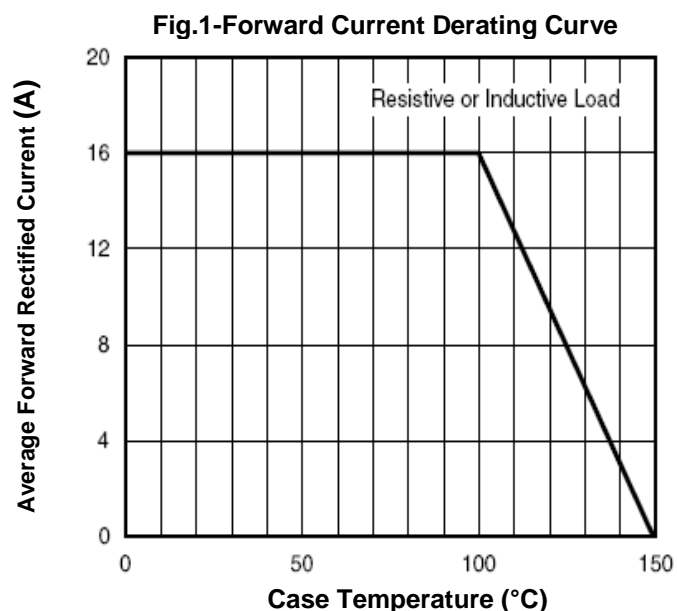
Symbol	Description	FEP 16AT	FEP 16BT	FEP 16CT	FEP 16DT	FEP 16FT	FEP 16GT	FEP 16HT	FEP 16JT	Unit	Conditions
<b>VRRM</b>	Maximum Repetitive Peak Reverse Voltage	50	100	150	200	300	400	500	600	V	
<b>VRMS</b>	Maximum RMS Voltage	35	70	105	140	210	280	350	420	V	
<b>VDC</b>	Maximum DC Blocking Voltage	50	100	150	200	300	400	500	600	V	
<b>IF(AV)</b>	Maximum Average Forward Rectified Current	16								A	$T_C=100^{\circ}C$
<b>IFSM</b>	Peak Forward Surge Current per leg	200								A	8.3ms single half sine-wave superimposed on rated load (JEDEC Method)

# 16A Super Fast Recovery Rectifiers

## FEP16AT - FEP16JT

Symbol	Description	FEP 16AT	FEP 16BT	FEP 16CT	FEP 16DT	FEP 16FT	FEP 16GT	FEP 16HT	FEP 16JT	Unit	Conditions	
<b>V<sub>F</sub></b>	Maximum Instantaneous Forward Voltage per leg	0.95			1.30		1.50			V	I <sub>F</sub> =8.0A	
<b>I<sub>R</sub></b>	Maximum DC Reverse Current at Rated DC Blocking Voltage	10									μA	T <sub>C</sub> =25° C
		500										T <sub>C</sub> =100° C
<b>T<sub>rr</sub></b>	Typical Reverse Recovery Time per leg	35			50						nS	I <sub>F</sub> =0.5A, I <sub>R</sub> =1A, I <sub>rr</sub> =0.25A
<b>C<sub>J</sub></b>	Typical Junction Capacitance per leg	85						60			pF	V <sub>R</sub> =4V, f=1MHz
<b>R<sub>thJC</sub></b>	Typical Thermal Resistance from Junction to Case per leg	2.2									° C/W	
<b>T<sub>J</sub>, T<sub>STG</sub></b>	Operating Junction and Storage Temperature Range	-55 to +150									° C	

### Typical Characteristics Curves



# 16A Super Fast Recovery Rectifiers

## FEP16AT - FEP16JT

Fig.3- Typical Forward Characteristics per leg

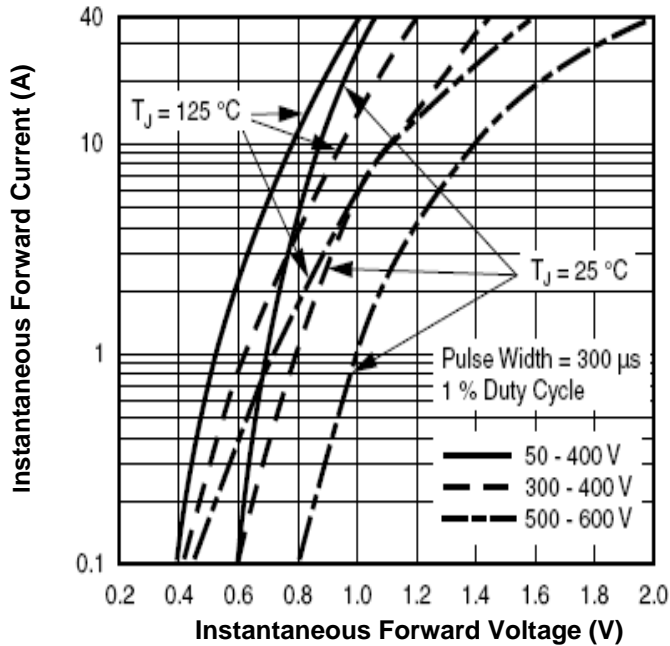


Fig.4-Typical Reverse Characteristics per leg

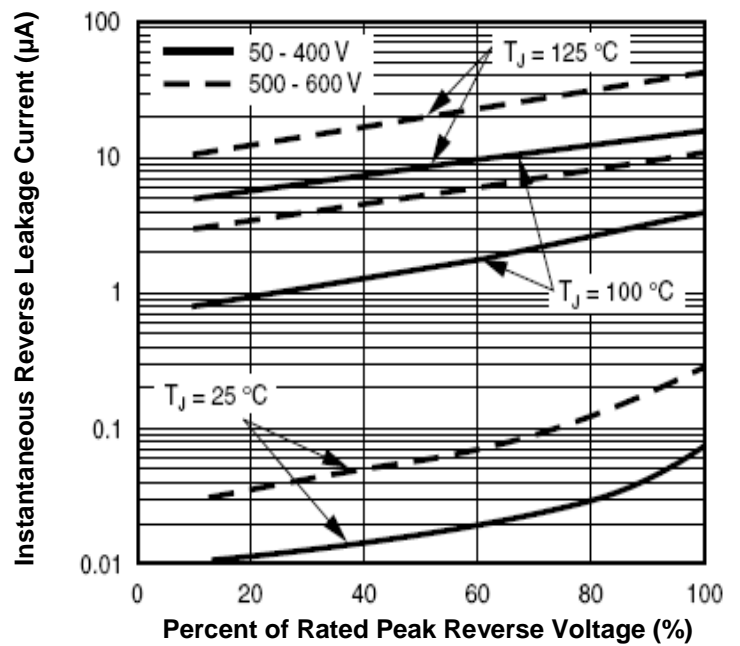
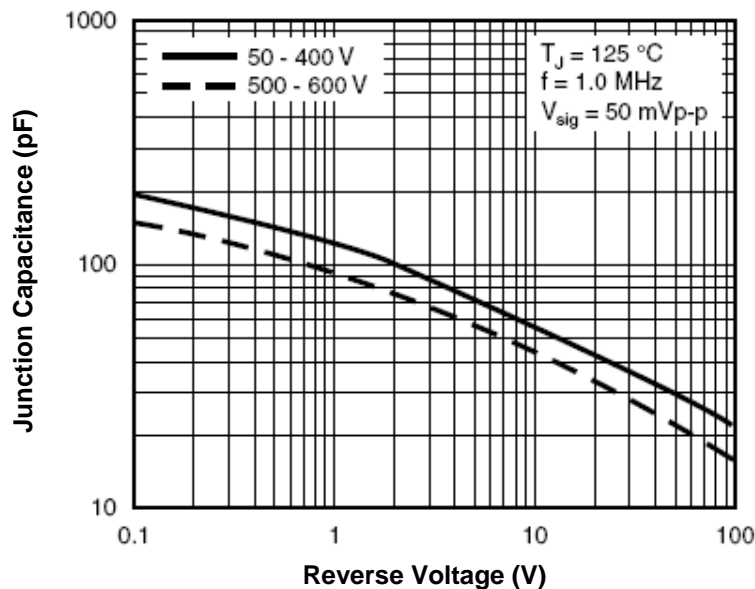


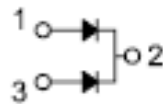
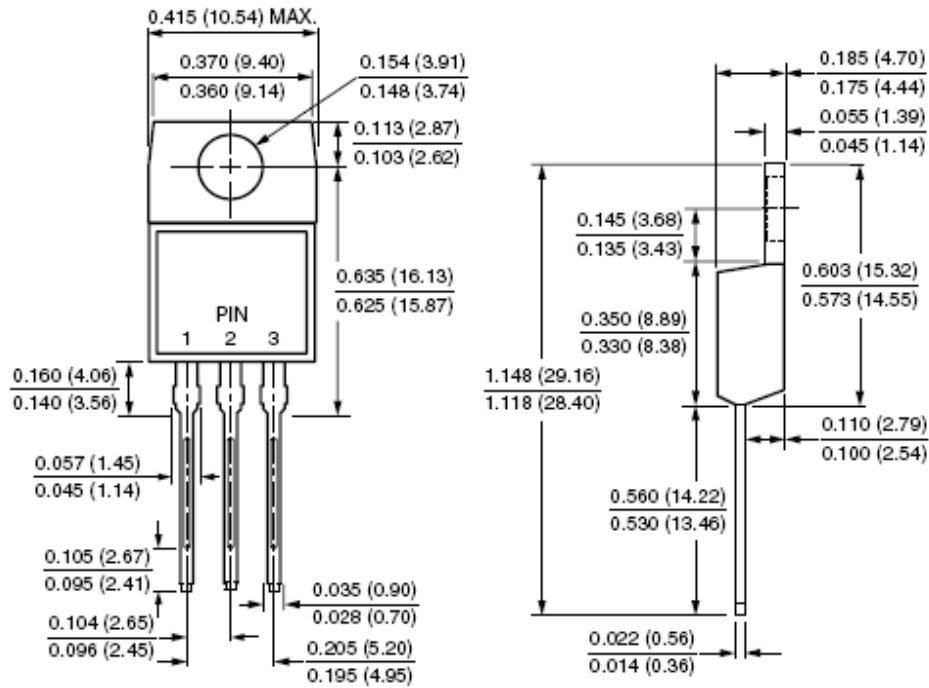
Fig.5- Typical Junction Capacitance per leg



# 16A Super Fast Recovery Rectifiers

## FEP16AT - FEP16JT

### Dimensions in inches (mm)



TO-220

# 16A Super Fast Recovery Rectifiers

---

FEP16AT - FEP16JT

## How to contact us:

### US HEADQUARTERS

28040 WEST HARRISON PARKWAY, VALENCIA, CA 91355-4162

Tel: (800) TAITRON (800) 824-8766 (661) 257-6060

Fax: (800) TAITFAX (800) 824-8329 (661) 257-6415

Email: [taitron@taitroncomponents.com](mailto:taitron@taitroncomponents.com)

Http://[www.taitroncomponents.com](http://www.taitroncomponents.com)

### TAITRON COMPONENTS MEXICO, S.A .DE C.V.

BOULEVARD CENTRAL 5000 INTERIOR 5 PARQUE INDUSTRIAL ATITALAQUIA, HIDALGO C.P.  
42970 MEXICO

Tel: +52-55-5560-1519

Fax: +52-55-5560-2190

### TAITRON COMPONETS INCORPORATED E REPRESENTAÇÕES DO BRASIL LTDA

RUA DOMINGOS DE MORAIS, 2777, 2.ANDAR, SALA 24 SAÚDE - SÃO PAULO-SP 04035-001 BRAZIL

Tel: +55-11-5574-7949

Fax: +55-11-5572-0052

### TAITRON COMPONETS INCORPORATED, SHANGHAI REPRESENTATIVE OFFICE

METROBANK PLAZA, 1160 WEST YAN' AN ROAD, SUITE 1503, SHANGHAI, 200052, CHINA

Tel: +86-21-5424-9942

Fax: +86-21-5424-9931