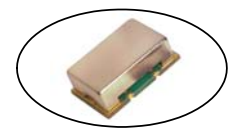


# CF33xx Model 9x14 mm SMD, 3.3V, CMOS



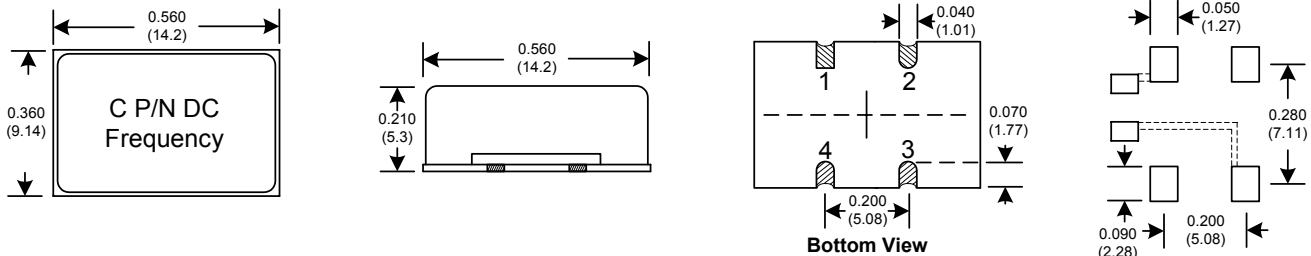
# Clock Oscillator



**Frequency Range:** 1.544MHz to 156.250MHz  
**Frequency Stability:** ±20ppm to ±100ppm  
**Temperature Range:** 0°C to 70°C  
 (Option M) -20°C to 70°C  
 (Option E) -40°C to 85°C  
**Storage:** -55°C to 120°C  
**Input Voltage:** 3.3V ± 0.3V  
**Input Current:**  
 1.544~34.00MHz 18mA Max  
 35.00~50.00MHz 25mA Max  
 51.00~69.00MHz 30mA Max  
 70.00~156.25 MHz 45mA Max  
**Output:** CMOS  
 Symmetry: 45/55% Max @ 50% Vdd  
 Rise/Fall Time:  
 1.54~10.00 MHz 5ns Max @ 20% to 80%  
 10.10~30.00 MHz 4ns Max @ 20% to 80%  
 30.10~50.00 MHz 3ns Max @ 20% to 80%  
 50.10~80.00 MHz 2.5ns Max @ 20% to 80%  
 80.10~156.25 MHz 2ns Max @ 20% to 80%  
 Logic: "0" = 10% Vdd Max  
 "1" = 90% Vdd Min  
 Start-up Time: 10ms Max  
 Load: 30pF Max, >80MHz 15pF Max  
**Jitter RMS:** 12KHz~80MHz 0.5ps Typ, 1ps Max  
**Aging:** <3ppm 1st/yr, <1ppm every year thereafter

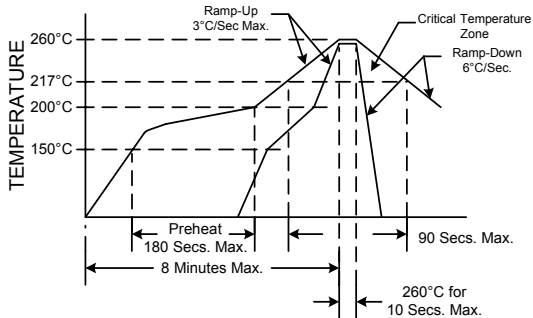
The CF33xx Series utilizes fundamental and 3rd overtone crystal technology to provide a low jitter output frequency. This oscillator provides all the electrical features of the 5x7mm SMD C33XX series in a standard 9x14mm SMD foot print. Available on tape and reel in quantities of 500ea.

### SUGGESTED PAD LAYOUT

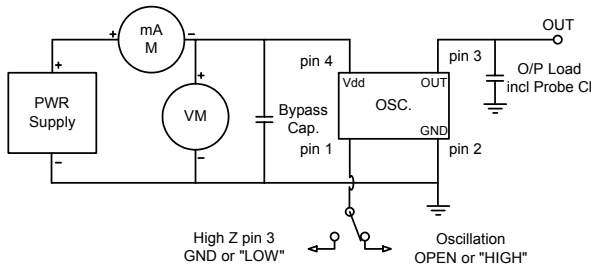


0.01uF Bypass Capacitor Recommended

### RECOMMENDED REFLOW SOLDERING PROFILE



NOTE: Reflow Profile with 240°C peak also acceptable.



### Crystek Part Number Guide

Example: CF3392-44.736MHz  
 Example: CFM3392-44.736MHz  
 Example: CFE3392-44.736MHz

	Temperature			Frequency Stability
	0/ 70°C	-20/ 70°C	-40/ 85°C	
CF3390	CFM3390	CFE3390	+/- 100ppm +/- 50ppm +/- 25ppm +/- 20ppm	
CF3392	CFM3392	CFE3392		
CF3391	CFM3391	CFE3391		
CF3398	N/A	N/A		

### Enable/Disable Function

Function pin 1	Oscillator State
Open	Oscillator Active
"1" level .7Vdd Min	Oscillator Active
"0" level 0.3Vdd Max	High Z

Specifications subject to change without notice.

TD-040102 Rev.B



**Crystek Crystals Corporation**

12730 Commonwealth Drive • Fort Myers, FL 33913  
 239.561.3311 • 800.237.3061 • FAX: 239.561.1025 • www.crystek.com