

Power Dividers 2-Way

Applications

- Phased Arrays
- Antenna Feed Networks
- Image Reject Mixers
- Test Systems
- LO Power Dividers

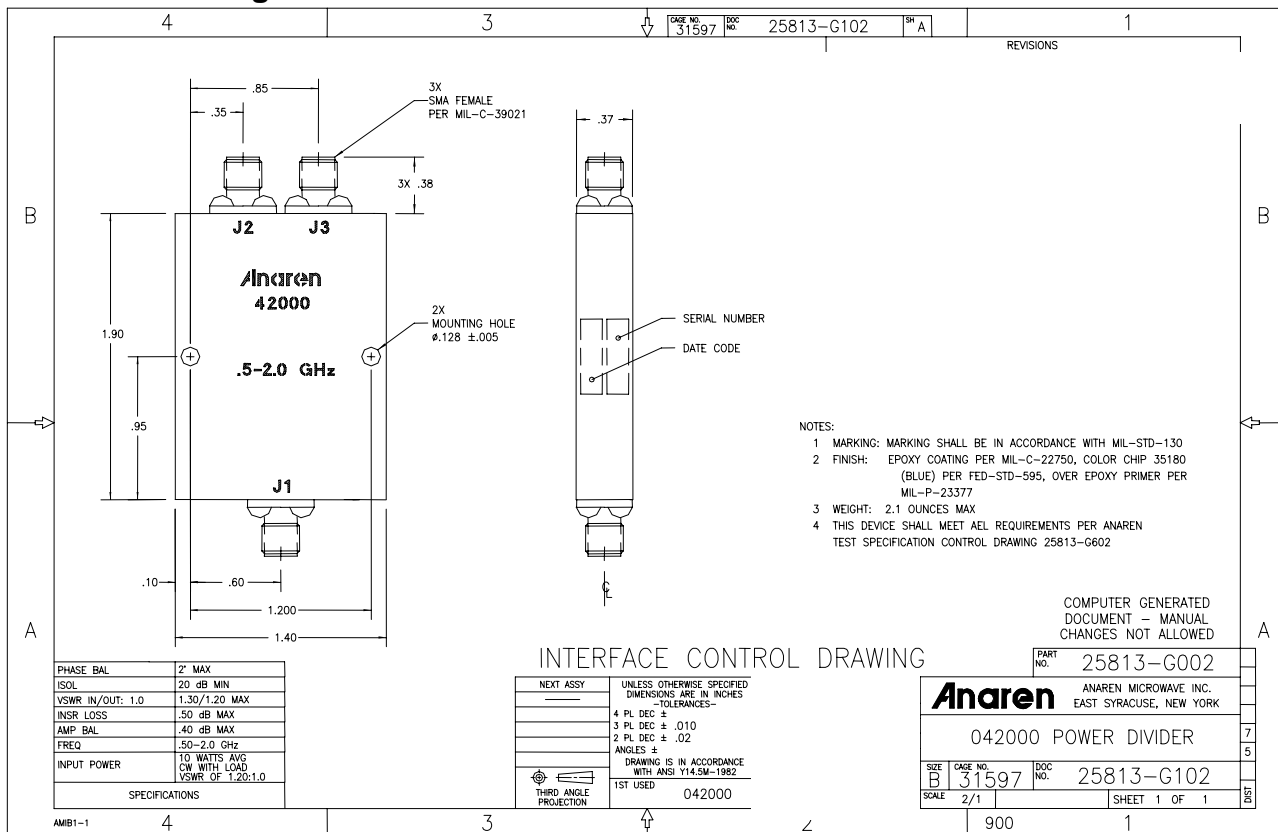
Features

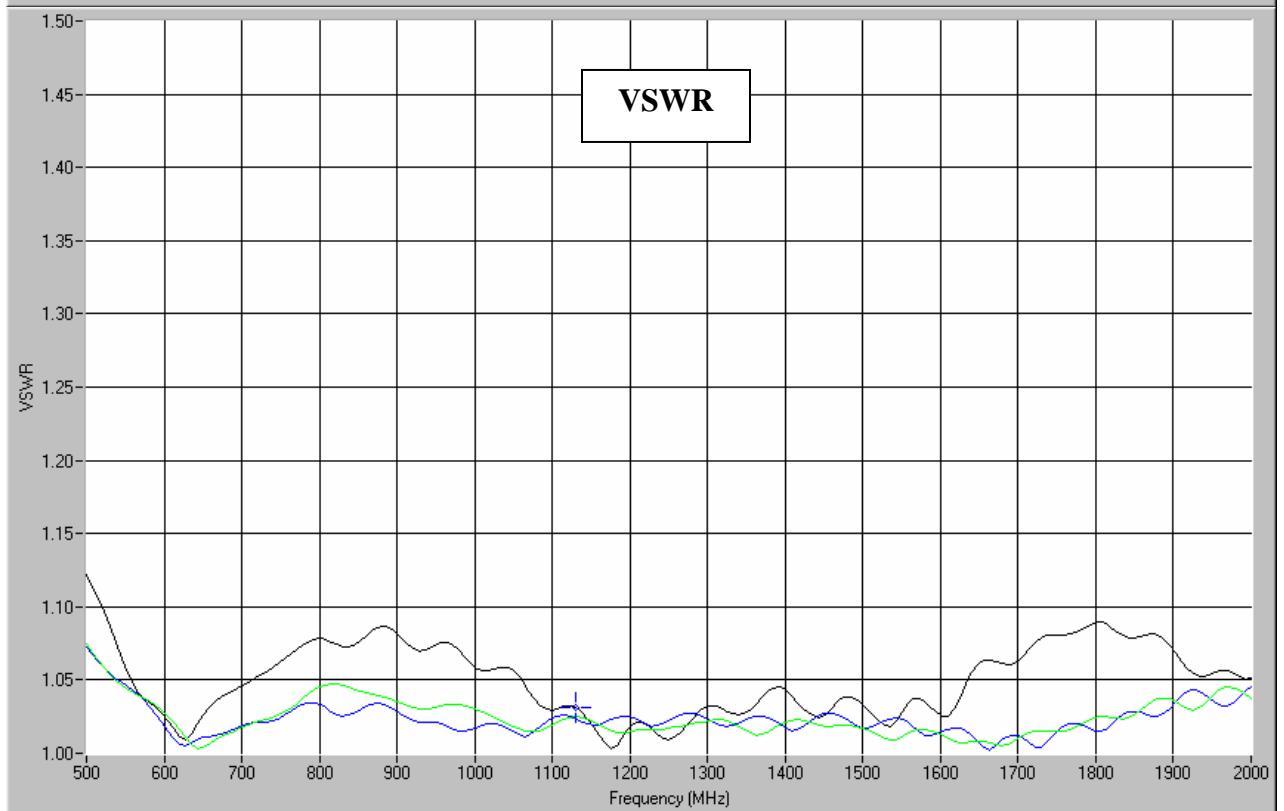
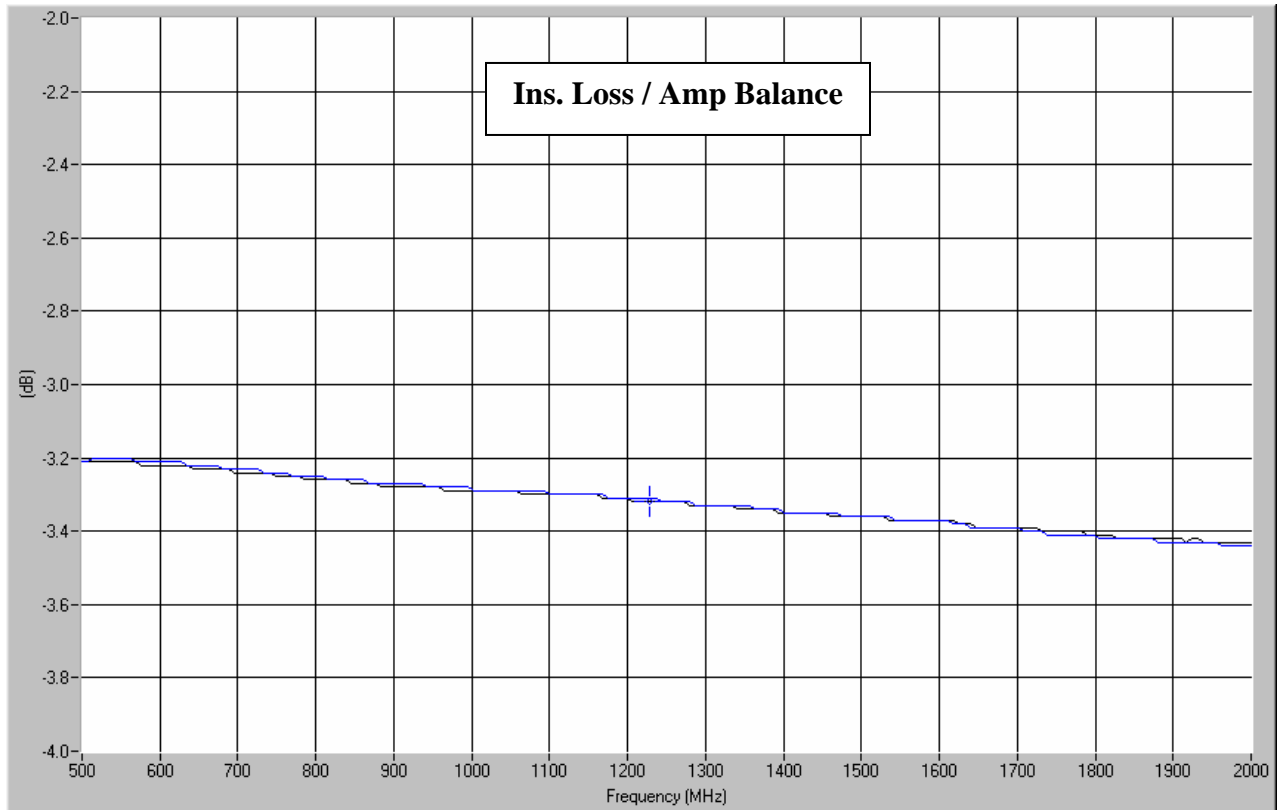
- Military Grade
- 0.5 – 2.0 GHz
- 2-Way Power Split
- In-Phase
- Connectors Per MIL-C-39012
- Rugged Aluminum Housing
- Low VSWR
- Meets MIL-E-5400 Class 3 Requirements



NOTES: Input power with load VSWR of 1.20:1
Electrical and Mechanical Specifications subject to change without notice

Outline Drawing



Typical Test Data Plots

USA/Canada: (315) 432-8909
Toll Free: (800) 411-6596
Europe: +44 2392-232392

Anaren
What'll we think of next?[™]

Typical Test Data Plots

