

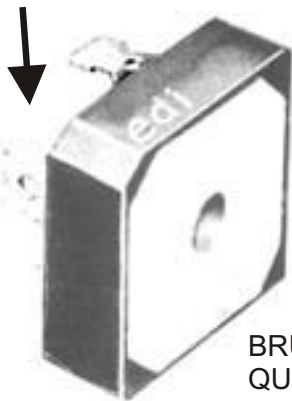


# BRUS3 &4

**MINIBRIDGE<sup>®</sup>**  
**50 ns. ULTRA-FAST RECOVERY**  
**30 to 35 AMPERES**  
**SINGLE-PHASE, FULL-WAVE BRIDGES**  
**HEAT SINK • CHASSIS • PC BOARD MOUNTING**

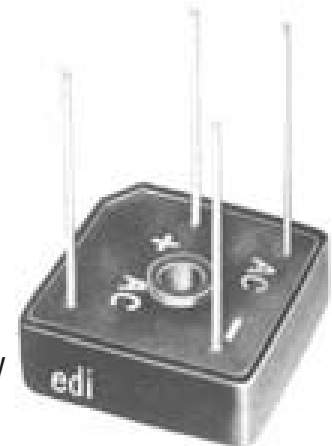


This mark indicates recognition under the component program of Underwriters Laboratories, inc.



BRUS3 &4  
QUICK-CONNECT TERMINALS

← **INTEGRALLY MOLDED  
HEAT SINKS  
PROVIDE VERY LOW  
THERMAL RESISTANCE**



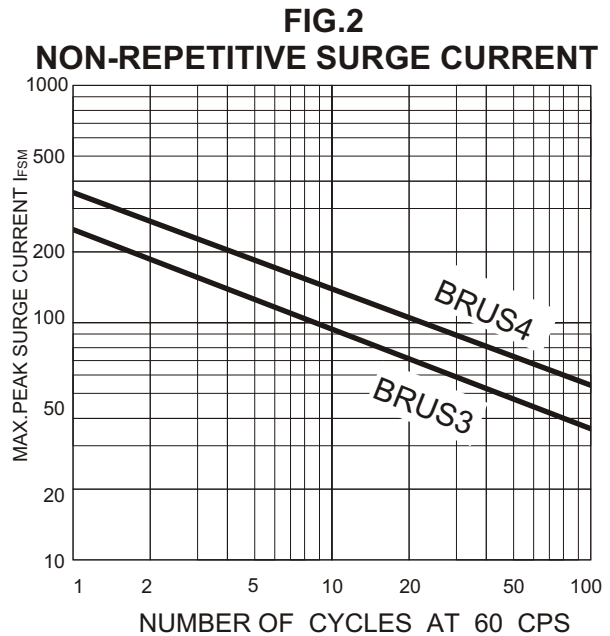
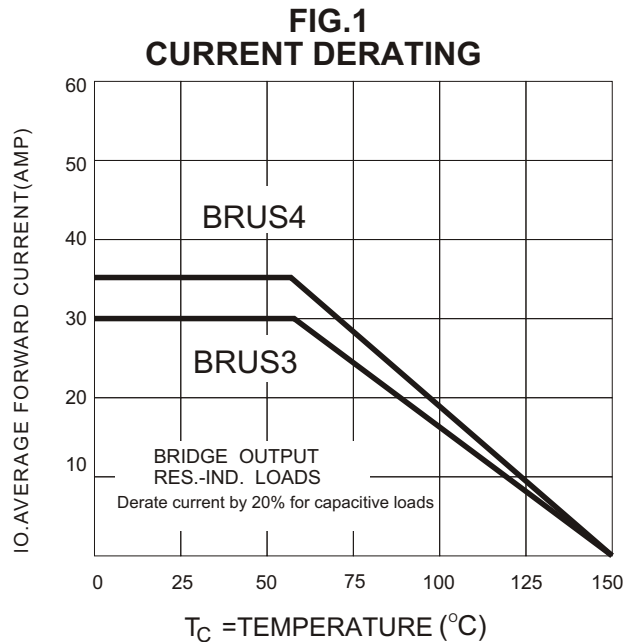
WIRE LEADS  
BRUS3W & 4W

PRV/LEG	50V	100V	200V	400V	500V	600V
BRUS3 SERIES	BRUS305	BRUS310	BRUS320	BRUS340	BRUS350	BRUS360
BRUS4 SERIES	BRUS405	BRUS410	BRUS420	BRUS440	BRUS450	BRUS460

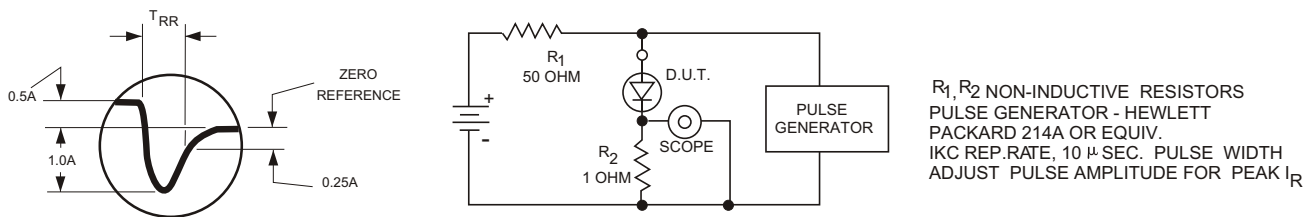
FOR WIRE LEADS ADD SUFFIX "W" TO SERIES NUMBER, FOR EXAMPLE, BRUS305W

ELECTRICAL CHARACTERISTICS PER LEG (at T <sub>A</sub> =25 °C Unless Otherwise Specified)	SERIES DESIGNATION		UNITS
	BRUS3	BRUS4	
Average Output Current, I <sub>o</sub> @ 60 °C (Fig.1)	30	35	Amps
Max.Forward Voltage Drop, V <sub>F</sub> @ I <sub>F</sub> =12A pk	1.75	1.5	Volts
Max.Forward Voltage Drop, V <sub>F</sub> @ I <sub>F</sub> =2ADC	1.2	1.2	Volts
Max.DC Reverse Current @ PRV and 25 °C, I <sub>R</sub>	10	10	μA
Max.DC Reverse Current @ PRV and 100°C, I <sub>R</sub>	200	200	μA
Max.Reverse Recovery Time, T <sub>rr</sub> (Fig.3)	50	50	Nanosec.
Max.Peak Surge Current, I <sub>FSM</sub> (8.3ms) (Fig.2)	250	320	Amps
Storage Temperature Range, T <sub>STG</sub>	-55 to+150		°C
Ambient Operating Temperature Range, T <sub>A</sub>	-55 to+150		°C
Thermal Resistance (Total Bridge), R <sub>θj-c</sub>	1.25 typ.	1.5 typ.	°C/W

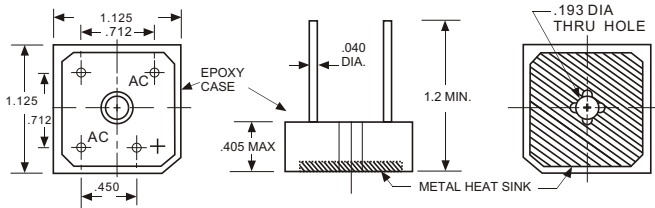
# BRUS3 &4



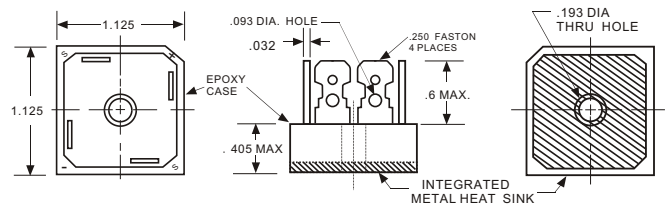
**FIG. 3  
REVERSE RECOVERY TEST METHOD**



**BRUS3/4-W MECHANICAL OUTLINE**



**BRUS3/4 MECHANICAL OUTLINE**



Dielectric test voltage 2,500 volts rms, max. 50-60Hz

1. Corrosion resistant terminals designed for .250 female quick connector, wrap around or solder.
2. A thin film of silicone thermal compound is recommended between the Minibridge® case and mounting surface for improved thermal conduction.
3. Higher dielectric strengths available. Consult factory.

NOTES: Maximum lead and terminal temperature for soldering, 3/8 inch from case, 5 seconds at 250 °C  
EDI reserves the right to change these specifications at any time without notice.