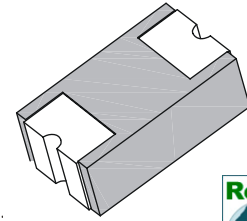


## 2.0A Low Profile Chip Schottky Rectifier

### Features

- Low Profile Package, Build-in Strain Relief
- Low Power Loss , High Efficiency
- High Surge Current Capability
- Super Very Low Forward Voltage
- Plastic Package has Underwriters Laboratory Flammability Classification 94V-0
- RoHS Compliant



**C2010  
(SMA)**



### Mechanical Data

<b>Case:</b>	Packed with FRP substrate and epoxy underfilled
<b>Terminals:</b>	Pure Tin plated, solderable per MIL-STD-750, Method 2026
<b>Polarity:</b>	Laser cathode band marking
<b>Weight:</b>	0.02 gram

### Maximum Ratings ( $T_{Ambient}=25^{\circ}C$ unless noted otherwise)

Symbols	Description	TSCDA22	TSCDA24	TSCDA26	TSCDA210	Unit
	Marking Code	S22	S24	S26	S210	
<b>VRRM</b>	Max. recurrent peak reverse voltage	20	40	60	100	V
<b>VRMS</b>	Max. RMS voltage	14	28	42	70	V
<b>VDC</b>	Max. DC blocking voltage	20	40	60	100	V
<b>Io(AV)</b>	Max. average forward rectified current (FIG.1)	2.0				A
<b>IFSM</b>	Peak forward surge current (Note1)	50				A
<b>VF</b>	Max. instantaneous forward voltage at 2.0A (Note2)	0.50		0.70	0.85	V
<b>IR</b>	Max. DC reverse current at rated DC blocking voltage @Ta=25°C	0.2				mA
<b>RθJL</b>	Typical thermal resistance, Junction to Lead (Note3)	17.0				° C/W
<b>TJ</b>	Operating junction temperature range	-55 to +125		-55 to +150		° C
<b>TSTG</b>	Storage Temperature Range	-55 to +150				° C

- Note: 1. 8.3ms single half sine-wave superimposed on rated load (JEDEC method)  
 2. Pulse Test with PW = 300 μsec, 1% Duty Cycle.  
 3. P.C.B. mounted 5.0 x 5.0mm (0.2 x 0.2") copper pad areas.

# 2.0A Low Profile Chip Schottky Rectifier

## TSCDA22-TSCDA210

### Typical Characteristics Curves

Fig.1- Forward Current Derating Curve

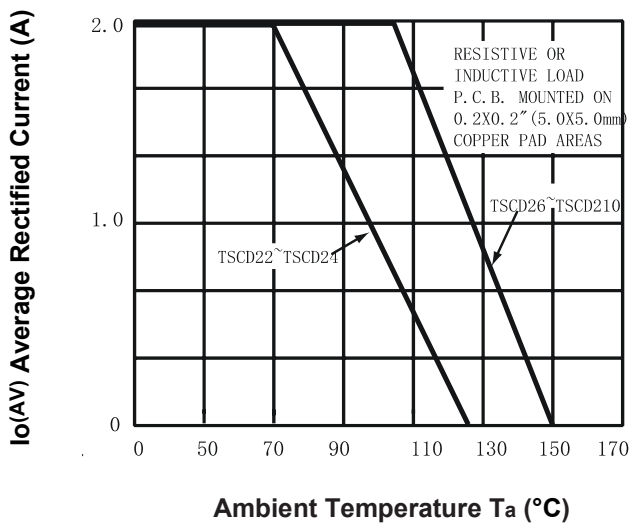


Fig.2-Max. Non-Repetitive Forward Surge Current

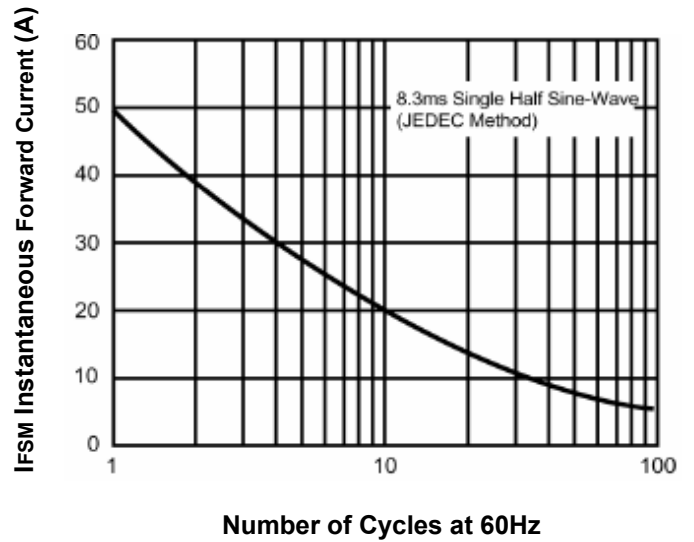


Fig.3- Typical Forward Characteristics

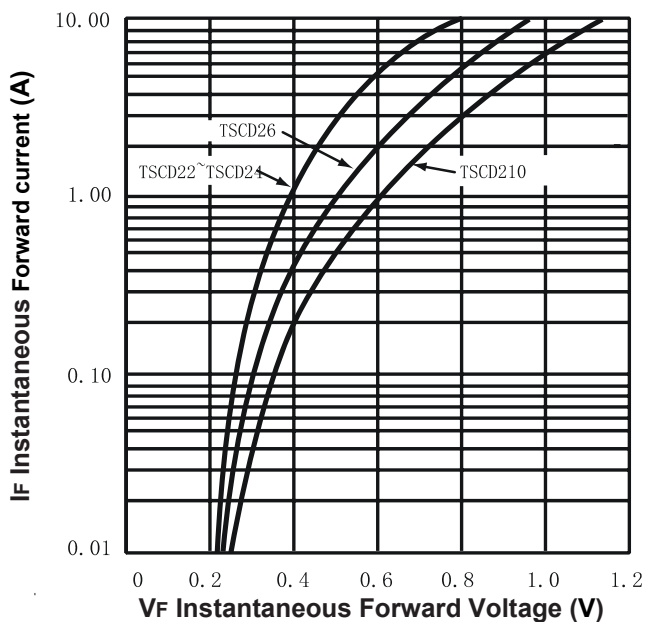
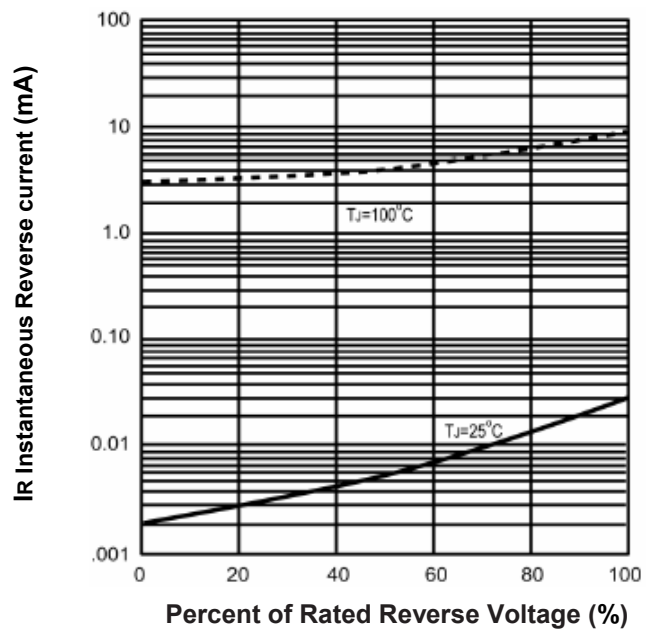


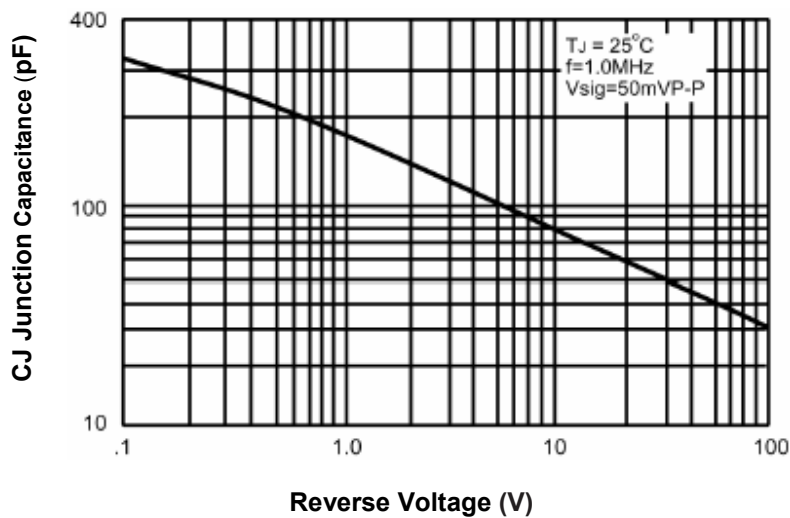
Fig.4- Typical Reverse Characteristics



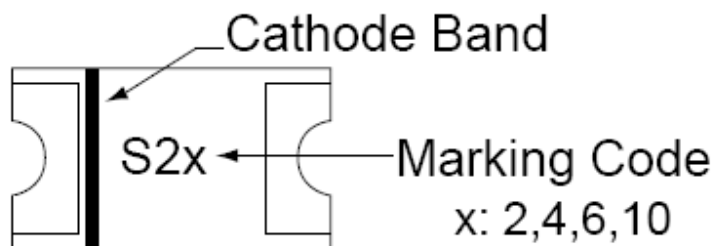
## 2.0A Low Profile Chip Schottky Rectifier

TSCDA22-TSCDA210

Fig.5- Typical Junction Capacitance



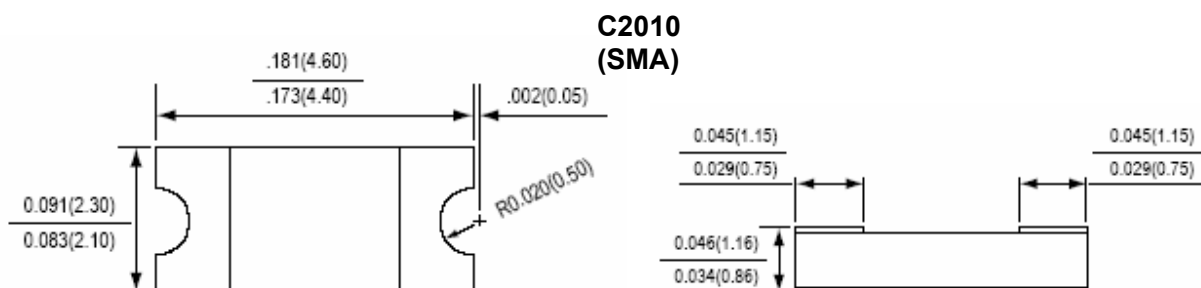
### Marking Information:



## 2.0A Low Profile Chip Schottky Rectifier

TSCDA22-TSCDA210

### Dimensions in inch (mm)



### How to contact us:

#### US HEADQUARTERS

28040 WEST HARRISON PARKWAY, VALENCIA, CA 91355-4162

Tel: (800) TAITRON (800) 824-8766 (661) 257-6060

Fax: (800) TAITFAX (800) 824-8329 (661) 257-6415

Email: [taitron@taitroncomponents.com](mailto:taitron@taitroncomponents.com)

Http://[www.taitroncomponents.com](http://www.taitroncomponents.com)

#### TAITRON COMPONENTS MEXICO, S.A .DE C.V.

BOULEVARD CENTRAL 5000 INTERIOR 5 PARQUE INDUSTRIAL ATITALAQUIA, HIDALGO C.P.  
42970 MEXICO

Tel: +52-55-5560-1519

Fax: +52-55-5560-2190

#### TAITRON COMPONENTS INCORPORATED REPRESENTAÇÕES DO BRASIL LTDA

RUA DOMINGOS DE MORAIS, 2777, 2.ANDAR, SALA 24 SAÚDE - SÃO PAULO-SP 04035-001 BRAZIL

Tel: +55-11-5574-7949

Fax: +55-11-5572-0052

#### TAITRON COMPONENTS INCORPORATED, SHANGHAI REPRESENTATIVE OFFICE

METROBANK PLAZA, 1160 WEST YAN' AN ROAD, SUITE 1503, SHANGHAI, 200052, CHINA

Tel: +86-21-5424-9942

Fax: +86-21-5424-9931