

Precision, Adjustable Shunt Regulator (600mV Reference)



FEATURES

- 600mv low voltage reference
- 35ppm low temperature coefficient
- ±6mV initial accuracy
- High PSRR: 45dB at 300kHz
- Better line regulation: 1mV (V_{IN} from 2.2V to 18V)
- Low supply current: 90 μ A
- Open drain output
- Directly drives optocouplers
- Industrial temperature range of -40°C to 85°C
- RoHS-compliant 5-lead TSOT23 package

APPLICATION

- SMPS control loop
- Low temperature coefficient voltage reference
- Power management
- Replaces zener diodes
- Isolated DC-to-DC converters
- Network, telecom and cellular base station
- Adjustable voltage reference

DESCRIPTION

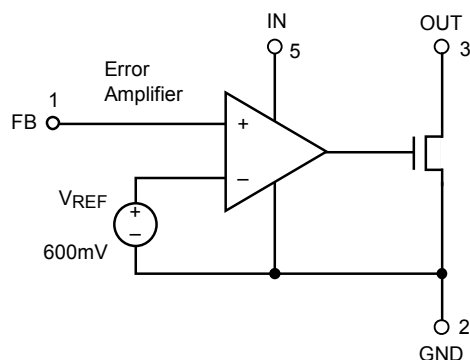
The CAT102 is a low-voltage reference and amplifier. Designed for the control loop of low-voltage power supplies, the reference voltage has been designed for 600mV. Over a junction temperature from -40°C to 105°C, the reference voltage is within 8mV of the nominal 600mV. In addition, the error amplifier output and the supply voltage pin (IN) are on separate pins.

Power supply rejection is a high 45dB at 300kHz. The output, OUT, can sink 20mA at a maximum saturation voltage of 250mV.

When combined with an optocoupler, the CAT102 can be used as an error amplifier that controls the feedback loop in isolated low-output voltage switching power supplies.

For Ordering Information details, see page 7.

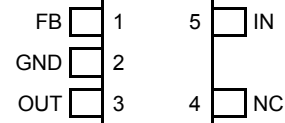
FUNCTIONAL DIAGRAM



PIN CONFIGURATION

TSOT-23 5L

Top View



PIN DESCRIPTION

| Pin Name | Function |
|----------|--|
| FB | Inverting input to error amplifier |
| GND | Ground |
| OUT | Output of error amplifier. Source & sink current capability is 20mA. |
| NC | No connection |
| IN | Positive supply |

ABSOLUTE MAXIMUM RATINGS⁽¹⁾

| Parameters | Ratings | Units |
|--------------------------------------|-------------|-------|
| V _{IN} Voltage | 20 | V |
| OUT Voltage | 20 | V |
| FB Voltage | 20 | V |
| V _{IN} , OUT, FB Current | 50 | mA |
| Operating Junction Temperature (10s) | 150 | °C |
| Lead Soldering Temperature (10s) | 260 | °C |
| Storage Temperature Range | -65 to +150 | °C |

ELECTRICAL CHARACTERISTICS

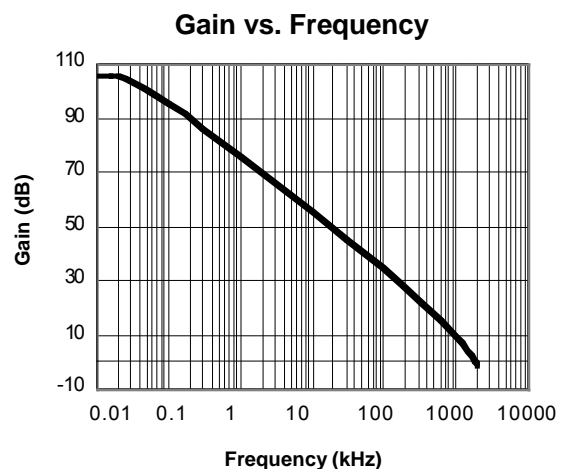
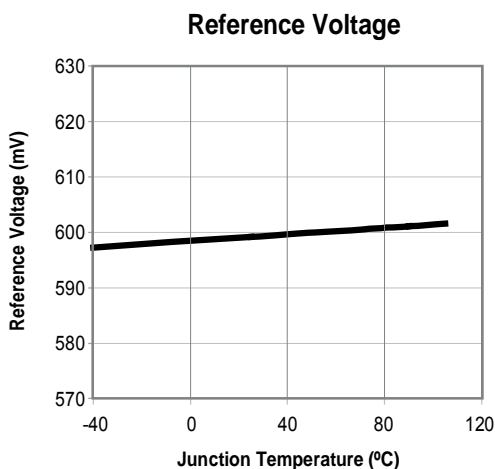
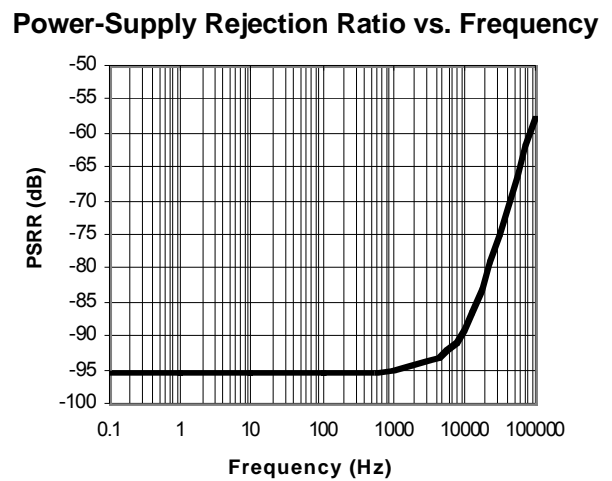
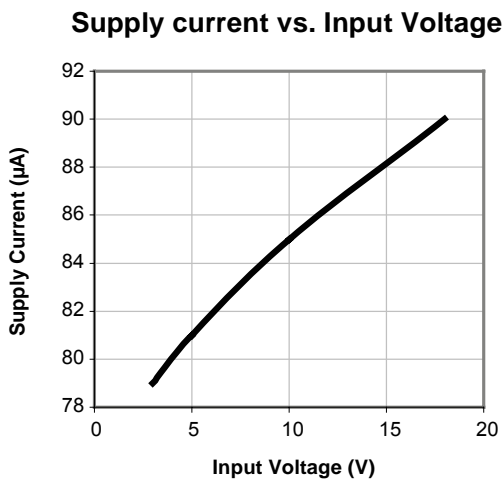
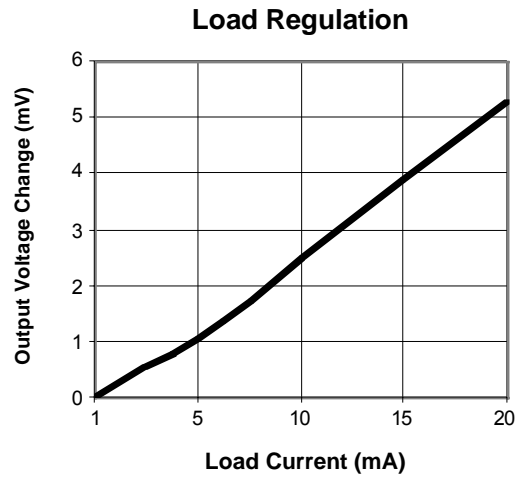
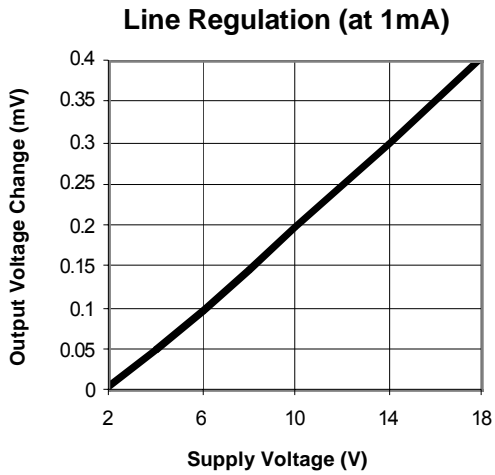
Electrical characteristics are guaranteed over the full operating temperature range of -40°C to +85°C with a junction temperature from -40°C to +105°C unless otherwise specified. Ambient temperature must be de-rated based upon power dissipation and package thermal characteristics.¹ Unless otherwise stated, test conditions are V_{IN} = 3V, FB = OUT, I_{OUT} = 1mA.

| Symbol | Parameter | Conditions | Min | Typ | Max | Units |
|-----------------------|----------------------------------|---|------|-----|-----|--------|
| V _{IN} | Supply Voltage Range | | 2.2 | | 18 | V |
| I _{IN} | Quiescent Supply Current | V _{OUT} = 1V | | 90 | 500 | μA |
| V _{FB} | FB Threshold Reference Voltage | T _J = 25° C | 594 | 600 | 606 | mV |
| | | -40°C < T _J < 105°C | 592 | | 608 | |
| | Line Regulation | V _{IN} = 2.2V to V _{IN} = 18V | | 0.5 | 1 | mV |
| | Load Regulation | I _{OUT} = 1mA to 10mA | | 3 | 8 | mV |
| T _{CREF} | Reference Temperature Deviation | -40°C < T _J < 105°C | | 35 | 50 | ppm/°C |
| I _{FB} | FB Input Current | | -500 | | 500 | nA |
| PSRR | Reference Power Supply Rejection | Frequency = 300kHz | 35 | 65 | | dB |
| A _V | Error Amplifier Open Loop Gain | I _{OUT} = 2mA, V _{OUT} = 1V | 60 | 80 | | dB |
| BW | Unity Gain Frequency | I _{OUT} = 2mA, V _{OUT} = 1V | 1 | 2 | | MHz |
| V _{OUT} | Output Saturation voltage | I _{OUT} = 20mA, V _{FB} = HIGH | | 130 | 250 | mV |
| TRANSC | Output Transconductance | I _{OUT} = 1mA to 20mA | | 2.5 | | mA/mV |
| I _{LEAK} | Output Leakage Current | V _{OUT} = 16V, V _{FB} = 0 | | 20 | 400 | nA |
| I _{OUT(MAX)} | Maximum Output Current | V _{OUT} = 0.3V | 20 | | | mA |

Notes:

- (1) These are stress ratings only and functional operation is not implied. Exposure to absolute maximum ratings for prolonged time periods may affect device reliability. All voltages are with respect to ground.
- (2) Thermal Characteristics (Θ_{JA}) of TSOT-23 5-lead: 255°C/W

TYPICAL PERFORMANCE CHARACTERISTICS



APPLICATIONS INFORMATION

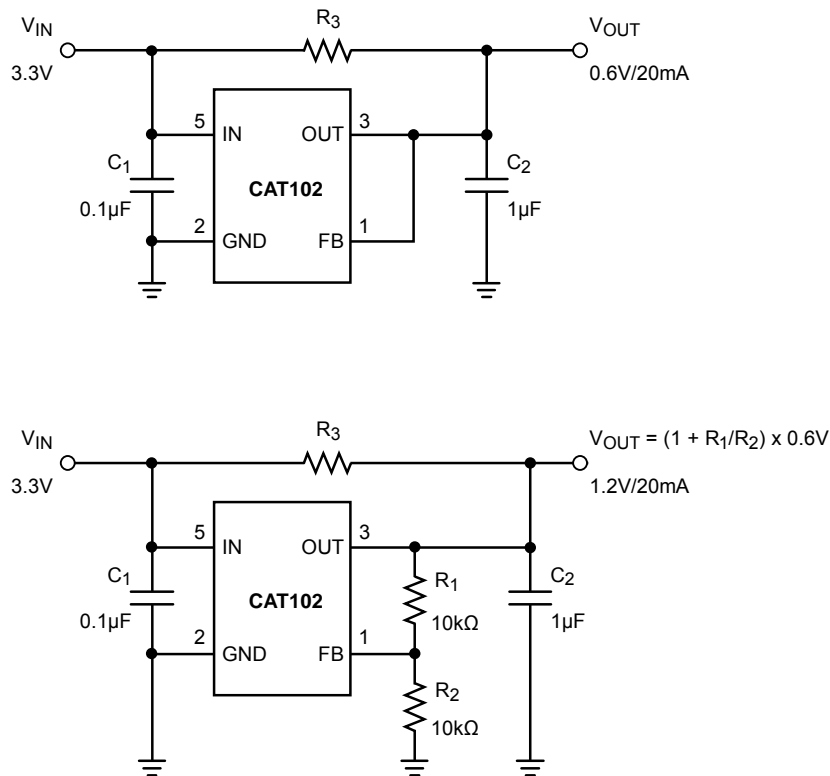
The CAT102 adjustable shunt regulator features isolated supply inputs and outputs, ideal for isolated power-supply applications using an optocoupler in the feedback path. The CAT102 sinks 20mA with V_{OUT} at 0.3V. The wide input supply range allows the device to operate from 2.2V to 18V. The CAT102 compares the FB input to a precision 600mV reference. If the FB input is low, the OUT pin sinks no current. If FB rises above 600mV, the OUT pin sinks up to 20mA.

The current limit can be adjusted by using a resistor R3 connected between the IN and OUT pins. For example, a 3.3V supply V_{IN} is associated with $R_3 = 135\Omega$, and a 10V supply works best with $R_3 = 470\Omega$. The CAT102 shunt regulator is limited to low-current applications with the OUT pin capable of sinking up to 20mA max.

Figure 1 shows the CAT102 configured as a shunt regulator. To generate an output voltage of 0.6V, the FB pin has to be directly connected to the OUT pin. A 1.0µF capacitor from OUT to GND is recommended when the output voltage is 0.6V. A resistor-divider connected from OUT to GND is used to produce a higher output voltage as set by the following equation:

$$V_{OUT} = (1 + R_1/R_2) \times 0.6V$$

Figure 1. Application circuits for 0.6V output and 1.2V output voltages



TYPICAL APPLICATION

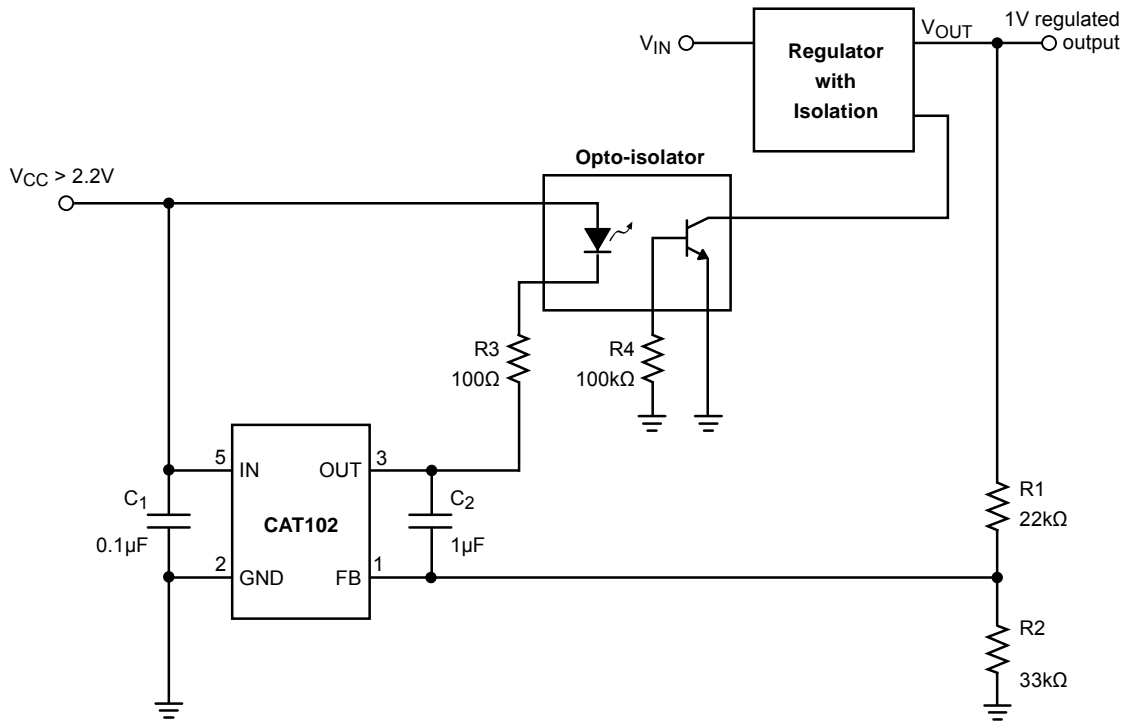
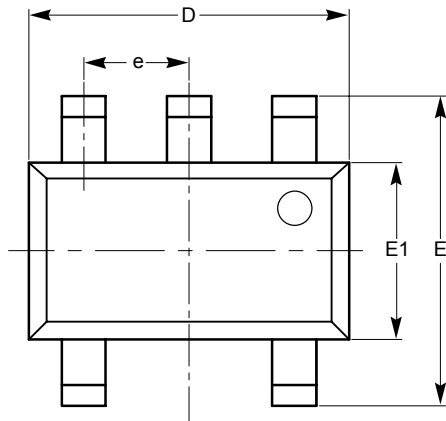


Figure 2. Opto-Feedback Application Circuit

In order to allow proper operation of the optocoupler and the CAT102, the supply voltage V_{CC} must be greater than 2.2V.

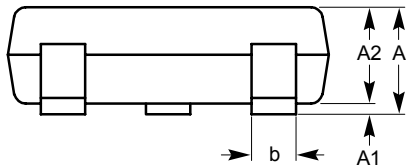
PACKAGE OUTLINES

TSOT-23 5-Lead (TD)

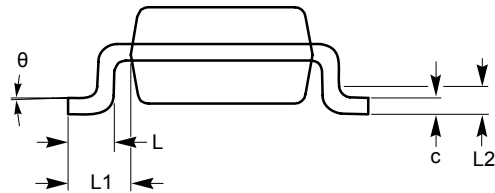


TOP VIEW

| SYMBOL | MIN | NOM | MAX |
|----------|----------|------|------|
| A | | | 1.00 |
| A1 | 0.01 | 0.05 | 0.10 |
| A2 | 0.80 | 0.87 | 0.90 |
| b | 0.30 | | 0.45 |
| c | 0.12 | 0.15 | 0.20 |
| D | 2.90 BSC | | |
| E | 2.80 BSC | | |
| E1 | 1.60 BSC | | |
| e | 0.95 TYP | | |
| L | 0.30 | 0.40 | 0.50 |
| L1 | 0.60 REF | | |
| L2 | 0.25 BSC | | |
| θ | 0° | | 8° |



SIDE VIEW



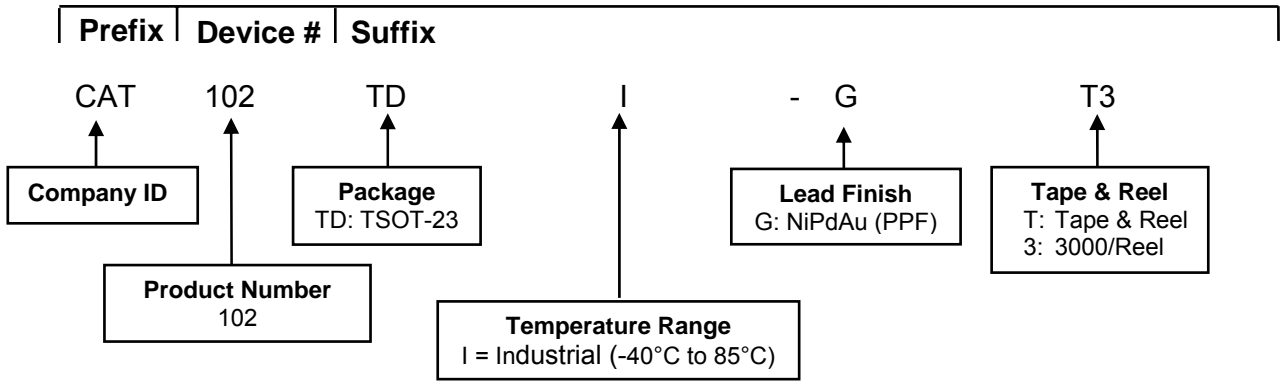
END VIEW

For current Tape and Reel information, download the PDF file from:
<http://www.catsemi.com/documents/tapeandreeel.pdf>.

Notes:

- (1) All dimensions in millimeters. Angles in degrees.
- (2) Complies with JEDEC MO-193.

EXAMPLE OF ORDERING INFORMATION



Notes:

- (1) All packages are RoHS-compliant (Lead-free, Halogen-free)
- (2) The device used in the above example is a CAT102TDI-GT3 (TSOT-23, Industrial Temperature, NiPdAu, Tape & Reel)

| |
|-----------------------------|
| ORDERING PART NUMBER |
| CAT102TDI-G |

REVISION HISTORY

| Date | Rev. | Reason |
|------------|------|--|
| 01/29/2007 | M | Added Ordering Information |
| 06/16/2007 | N | Changed package from SOT-23 to TSOT-23 Updated Features Updated Functional Diagram Updated Electrical Characteristics Updated Typical Performance Characteristics Changed termination from SnPb to NiPdAu Added MD- to document Number |

Copyrights, Trademarks and Patents

© Catalyst Semiconductor, Inc.

Trademarks and registered trademarks of Catalyst Semiconductor include each of the following:
Beyond Memory™, DPP™, EZDim™, LDD™, MiniPot™ and Quad-Mode™

Catalyst Semiconductor has been issued U.S. and foreign patents and has patent applications pending that protect its products.

CATALYST SEMICONDUCTOR MAKES NO WARRANTY, REPRESENTATION OR GUARANTEE, EXPRESS OR IMPLIED, REGARDING THE SUITABILITY OF ITS PRODUCTS FOR ANY PARTICULAR PURPOSE, NOR THAT THE USE OF ITS PRODUCTS WILL NOT INFRINGE ITS INTELLECTUAL PROPERTY RIGHTS OR THE RIGHTS OF THIRD PARTIES WITH RESPECT TO ANY PARTICULAR USE OR APPLICATION AND SPECIFICALLY DISCLAIMS ANY AND ALL LIABILITY ARISING OUT OF ANY SUCH USE OR APPLICATION, INCLUDING BUT NOT LIMITED TO, CONSEQUENTIAL OR INCIDENTAL DAMAGES.

Catalyst Semiconductor products are not designed, intended, or authorized for use as components in systems intended for surgical implant into the body, or other applications intended to support or sustain life, or for any other application in which the failure of the Catalyst Semiconductor product could create a situation where personal injury or death may occur.

Catalyst Semiconductor reserves the right to make changes to or discontinue any product or service described herein without notice. Products with data sheets labeled "Advance Information" or "Preliminary" and other products described herein may not be in production or offered for sale.

Catalyst Semiconductor advises customers to obtain the current version of the relevant product information before placing orders. Circuit diagrams illustrate typical semiconductor applications and may not be complete.



Catalyst Semiconductor, Inc.
Corporate Headquarters
2975 Stender Way
Santa Clara, CA 95054
Phone: 408.542.1000
Fax: 408.542.1200
www.catsemi.com

Document No: MD-4007
Revision: N
Issue date: 07/16/07