

# SMTT-500H

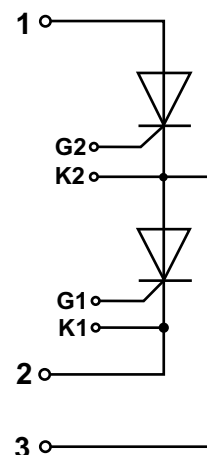
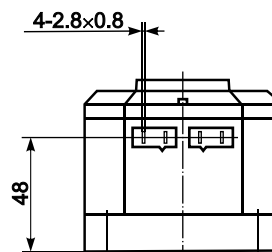
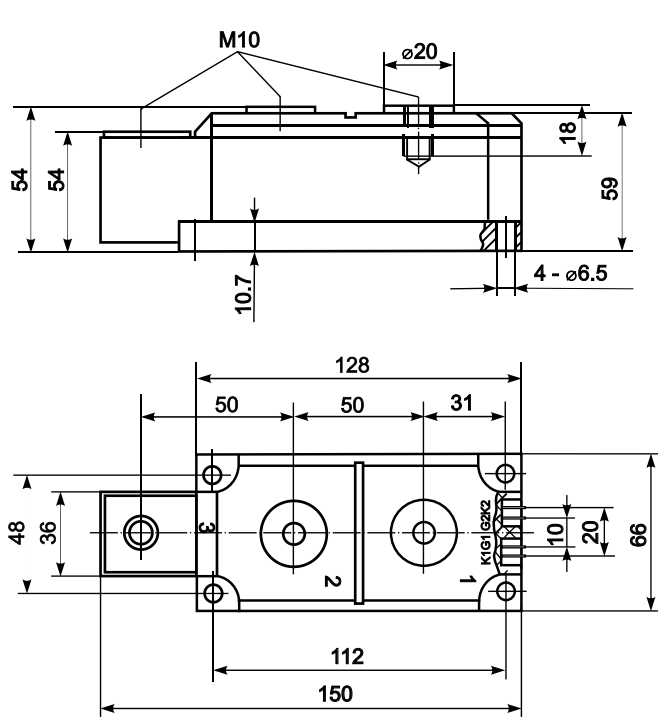


## Thyristor-Thyristor Module



Type	$V_{RSM}$	$\frac{V_{RRM}}{V_{DRM}}$
SMTT-500H-08	1000	800
SMTT-500H-12	1400	1200
SMTT-500H-14	1600	1400
SMTT-500H-16	1800	1600
SMTT-500H-18	2000	1800
SMTT-500H-20	2200	2000
SMTT-500H-22	2400	2200
SMTT-500H-24	2600	2400

Type	$I_{TAVM}$	$I_{TRMS}$	$T_c$	$I_{TSM}$	$(di/dt)_{cr}$	$(dv/dt)_{cr}$	$V_{TM}$	$I_{TM}$	$V_{TO}$	$r_T$	$t_q$	$V_{GT}$	$I_{GT}$	$T_{VJM}$	$V_{isol}$	$R_{thJC}$
	A	A	°C	kA	A/μs	V/μs	V	kA	V	mΩ	μs	V	mA	°C	V	K/W
SMTT-500H	500	800	85	16.0	100	800	1.44	1.5	0.85	0.38	350	3.0	300	125	2500	0.065



### Features:

- Industrial standard package
- Heat transfer through aluminium nitride ceramic isolated metal baseplate
- Precise internal pressure contacts for high reliability
- 2500V RMS isolation voltage

### Typical Applications:

- DC motor control
- AC motor soft starter
- Temperature control (e.g. for ovens, chemical processes)
- Lighting control