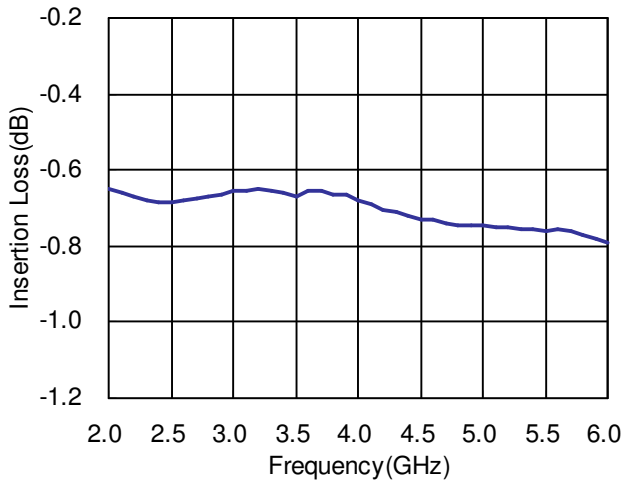
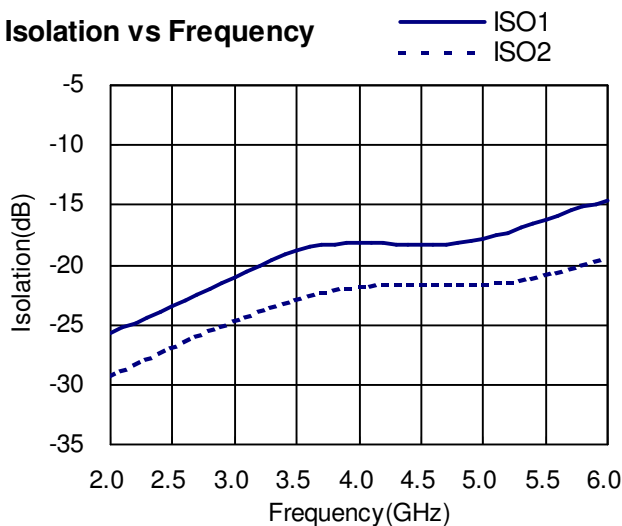
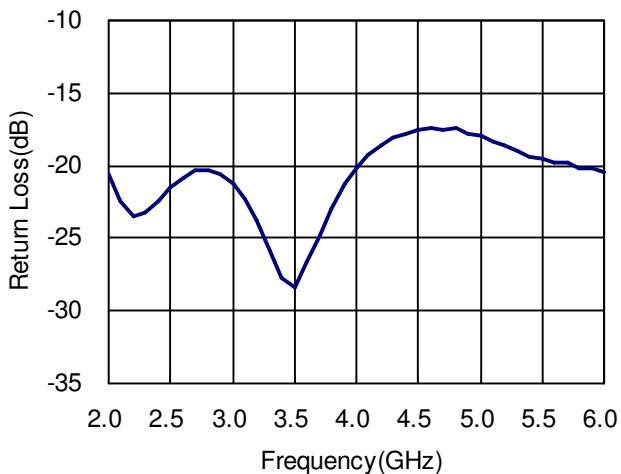
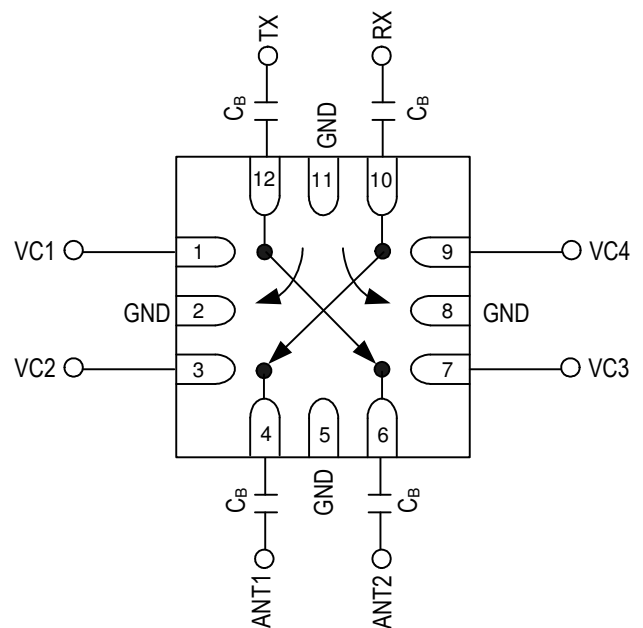


Typical Performance Data with 8pF Capacitors @ +25°C
Insertion Loss vs Frequency

Isolation vs Frequency


Note: ISO1 for ANT1-ANT2 and TX-RX
 ISO2 for ANT1-TX, ANT1-RX, ANT2-TX, and ANT2-RX

Return Loss vs Frequency

Absolute Maximum Ratings

Parameter	Absolute Maximum
RF Input Power	+34 dBm @ +3V
Control Voltage	+6V
Operating Temperature	-40°C to +85°C
Storage Temperature	-65°C to +150°C

Pin Out (Top View)

Note:

1. DC blocking capacitors $C_B=8\text{pF}$ are required on all RF ports.
2. Exposed pad in the bottom must be connected to ground by via holes.
3. TX and RX ports can be used interchangeably.

Logic Table for Switch On-Path

VC1	VC2	VC3	VC4	On-Path
1	0	0	0	ANT2-RX
0	1	0	0	ANT1-TX
0	0	1	0	ANT1-RX
0	0	0	1	ANT2-TX

'1' = +3V to +5V
 '0' = 0V to +0.2V