

# QUADRATURE HYBRID MODEL DQS-50-500

10:1 BANDWIDTH

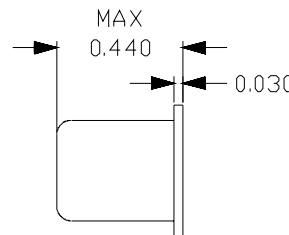
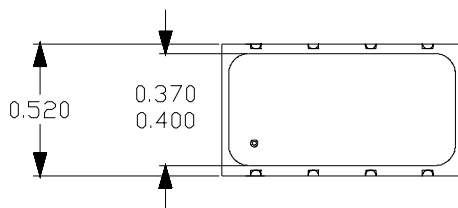
50 - 500 MHz

## SPECIFICATIONS

<b>Operating Frequency:</b>	50 - 500 MHz	<b>Phase Unbalance:</b>	3.0° (Typ)/ 5.0° (Max)
<b>Insertion Loss:</b>	1.7 dB (Typ) / 2.2 dB (Max)	<b>VSWR:</b>	1.3:1 (Typ)
<b>Isolation:</b>	23 dB (Typ)/13 dB (Min)	<b>Input Power Rating</b>	1 Watt (Max)
<b>Amplitude Unbalance:</b>	1.0 dB (Typ) / 1.5 dB (Max)	<b>Impedance:</b>	50 Ohms
		<b>Operating Temp. Range:</b>	-20° to +70°C



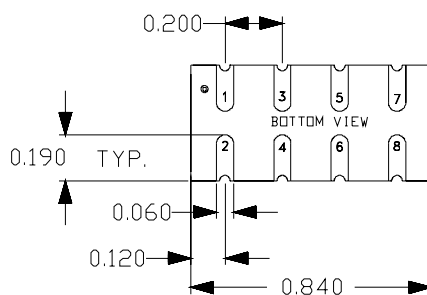
## MECHANICAL OUTLINE: 102S



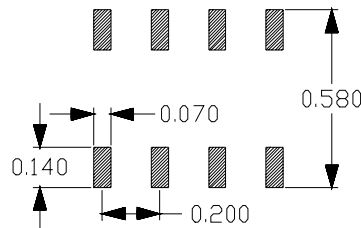
### PIN-OUT

INPUT	Pin 1
ISOLATED	Pin 2
+90° OUTPUT	Pin 8
0° OUTPUT	Pin 7
CASE GND	3,4,5,6

\* Terminate ISOLATED port with 50 Ohms externally.



### LAYOUT FOR PRINTED CIRCUIT DESIGN



# QUADRATURE HYBRID MODEL DQS-50-500

10:1 BANDWIDTH

50 - 500 MHz

## PERFORMANCE PLOTS

