

Type:RC-855

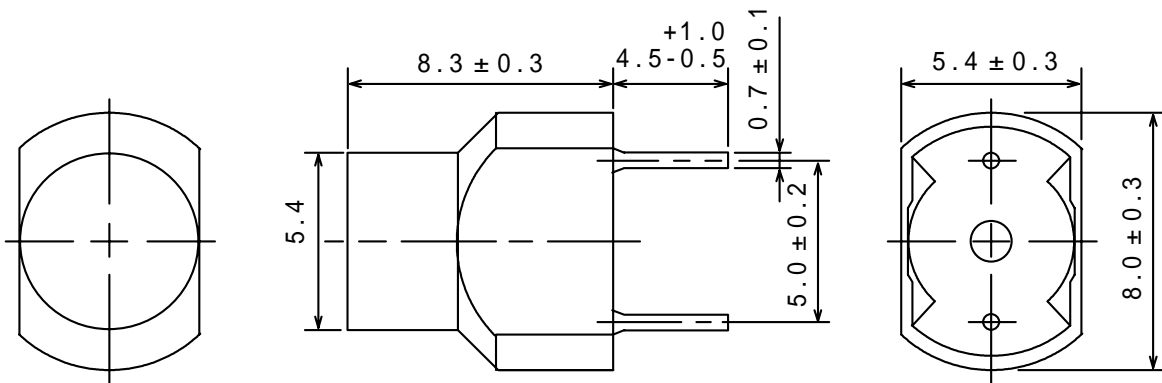
Product Description

- 8.3 × 5.7mm Max. (L × W), 8.6mm Max. height
- Inductance Range: 1.0 μH ~ 1mH
- Rated Current Range: 65mA ~ 400mA

Feature

- Magnetically unshielded construction.
- Ideally used in Printers, LCD TV, Copy Machine, Mainboard of the compounding machines, Adapters, etc as Power Supplies's inductors or DC-DC Converter inductors.
- RoHS Compliance

Dimensions (mm)



Type:RC-855
Specification-2

Part Name	Stamp	Inductance [Within] 1	Qu [Min.] 1	Rated .current (m A)[Ref.] 2	D.C.R.() [Max.] (at 20)	S.R.F. (MHz) [Min.]
RC855NP-1R1M	1R1M	1.1 μ H \pm 20%	90	300	0.1	100.0
RC855NP-1R3M	1R3M	1.3 μ H \pm 20%	95	300	0.1	100.0
RC855NP-1R6M	1R6M	1.6 μ H \pm 20%	100	300	0.1	100.0
RC855NP-2R0M	2R0M	2.0 μ H \pm 20%	70	400	0.1	78.5
RC855NP-2R4M	2R4M	2.4 μ H \pm 20%	70	400	0.2	69.5
RC855NP-3R0M	3R0M	3.0 μ H \pm 20%	65	300	0.2	59.0
RC855NP-3R6K	3R6K	3.6 μ H \pm 10%	75	300	0.2	47.5
RC855NP-4R3K	4R3K	4.3 μ H \pm 10%	75	250	0.2	42.0
RC855NP-5R1K	5R1K	5.1 μ H \pm 10%	75	250	0.2	38.0
RC855NP-6R2K	6R2K	6.2 μ H \pm 10%	75	200	0.3	34.0
RC855NP-7R5K	7R5K	7.5 μ H \pm 10%	70	200	0.4	30.0
RC855NP-9R1K	9R1K	9.1 μ H \pm 10%	65	150	0.4	27.6
RC855NP-110K	110K	11 μ H \pm 10%	60	150	0.4	25.2
RC855NP-130K	130K	13 μ H \pm 10%	55	150	0.5	21.8
RC855NP-160K	160K	16 μ H \pm 10%	50	150	0.5	18.2
RC855NP-200K	200K	20 μ H \pm 10%	50	150	0.6	17.0
RC855NP-240K	240K	24 μ H \pm 10%	45	150	0.6	16.2
RC855NP-300K	300K	30 μ H \pm 10%	40	150	0.6	15.2
RC855NP-360K	360K	36 μ H \pm 10%	40	150	0.7	14.2
RC855NP-430K	430K	43 μ H \pm 10%	40	150	0.9	8.5
RC855NP-510K	510K	51 μ H \pm 10%	45	150	1.0	8.2
RC855NP-620K	620K	62 μ H \pm 10%	45	150	1.1	7.9
RC855NP-750K	750K	75 μ H \pm 10%	40	150	1.2	7.2
RC855NP-910K	910K	91 μ H \pm 10%	35	150	1.4	6.0
RC855NP-111K	111K	110 μ H \pm 10%	55	100	1.6	8.1
RC855NP-131K	131K	130 μ H \pm 10%	50	100	1.7	7.4
RC855NP-161K	161K	160 μ H \pm 10%	45	100	1.9	6.7
RC855NP-201K	201K	200 μ H \pm 10%	60	100	2.2	5.5
RC855NP-241K	241K	240 μ H \pm 10%	70	100	2.4	4.9
RC855NP-301K	301K	300 μ H \pm 10%	60	100	2.7	4.5
RC855NP-361K	361K	360 μ H \pm 10%	55	100	3.0	3.7
RC855NP-431K	431K	430 μ H \pm 10%	70	100	3.9	3.5
RC855NP-511K	511K	510 μ H \pm 10%	60	80	4.1	3.2
RC855NP-621K	621K	620 μ H \pm 10%	70	80	5.5	2.9
RC855NP-751K	751K	750 μ H \pm 10%	70	65	6.2	2.4
RC855NP-911K	911K	910 μ H \pm 10%	75	65	7.6	2.2

1 Measuring frequency Inductance, Qu 1.1 μ H ~ 9.1 μ H ; 7.96 MHz
 11 μ H ~ 91 μ H ; 2.52 MHz
 110 μ H ~ 750 μ H ; 796 kHz
 910 μ H ; 252 kHz

2. Rated current:

The DC current at which the temperature rise is $t = 40$ ($T_a = 20$)(for 1.1 μ H ~ 91 μ H)

The DC current at which the inductance decreases to 95% of it's initial value.(for the other part numbers)

Type:RC-855
Specification-4

Part Name	Stamp	Inductance [Within] 1	Qu [Min.] 1	S.R.F. (MHz) [Min.]	D.C.R.() [Max.] (at 20)	Rated Current (m A) 2
RC855NP-1R8M-F	1R8M	1.8 μ H \pm 20%	90	70	0.2	180
RC855NP-2R2M-F	2R2M	2.2 μ H \pm 20%	100	67	0.2	180
RC855NP-2R7M-F	2R7M	2.7 μ H \pm 20%	95	50	0.2	150
RC855NP-3R3M-F	3R3M	3.3 μ H \pm 20%	95	44	0.3	100
RC855NP-3R9K-F	3R9K	3.9 μ H \pm 10%	95	40	0.4	100
RC855NP-4R7K-F	4R7K	4.7 μ H \pm 10%	110	36	0.4	100
RC855NP-5R6K-F	5R6K	5.6 μ H \pm 10%	105	34	0.6	80
RC855NP-6R8K-F	6R8K	6.8 μ H \pm 10%	110	30	0.6	80
RC855NP-8R2K-F	8R2K	8.2 μ H \pm 10%	110	26	0.7	80

1 Measuring frequency : 7.96 MHz

2 Rated current: The DC current at which the inductance decreases 90% of it's initial value or when $t=40$, whichever is lower($T_a = 20$).