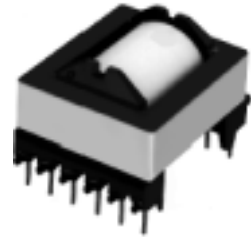


**Type: ERH2822**

◆ **Product Description**

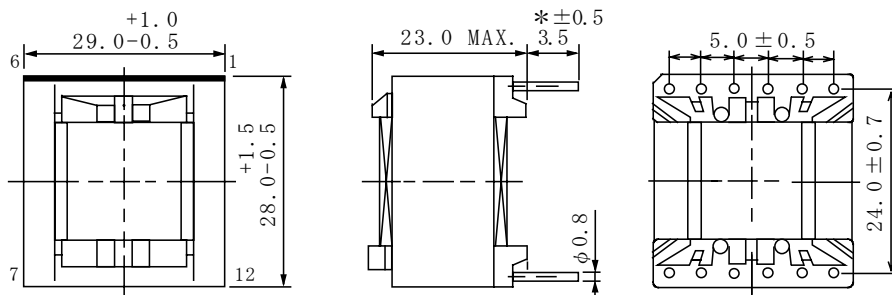
- 30.0×29.5mm Max.(L×W), 23.0mm Max. Height.
- Custom design is available.



◆ **Feature**

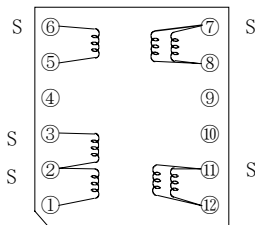
- Max. Operating frequency 500kHz. Max Operating Power 35.0W(500kHz)
- Ideally used in Switching regulator, EL inverter and Power Factor Correction choke.
- RoHS Compliance

◆ **Dimensions (mm)**

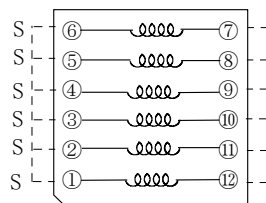


◆ **Schematics (Bottom)**

**1. For General Transformer**



**2. For PFC choke**



“ S ” is winding start

◆ **Specification (For General Transformer)**

Sample No.	Inductance (1-3) 1kHz/1V	D.C.R. (7-8)	D.C.R. (11-12)	Hi-pot Winding-winding (50/60Hz)
3308-T126	1.0mH ± 25%	150mΩ Max.	35 mΩ Max.	AC 1500Vrms/1min.

◆ **Specification (For PFC choke)**

Sample No.	Inductance (1,2,3,4,5,6-7,8,9,10,11,12) 1kHz/1V	D.C.R. (1,2,3,4,5,6-7,8,9,10,11,12)	Rated Current (1,2,3,4,5,6-7,8,9,10,11,12)
3308-T130	50 μ H ± 18%	2.4mΩ Max.	1.5 A

※ Rated current: The DC current at which the inductance decreases to 90 % of it's initial value or when  $\Delta t=40^{\circ}\text{C}$ , whichever is lower( $T_a=20^{\circ}\text{C}$ ).