

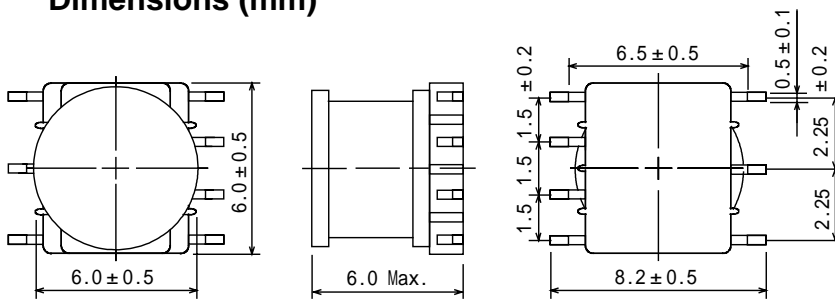
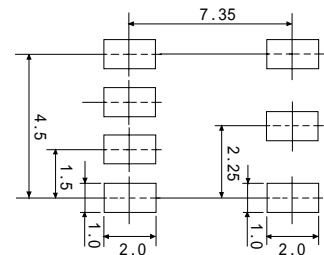
Type: CMD-6N

Product Description

- 6.5 × 6.5mm Max.(L × W), 6.0mm Max. Height.
- Inductance Range: 22 μH ~ 1.0mH
- Rated current range: 150mA ~ 1300mA.
- 7 Terminal pins' type gives a flexible design as inductors or transformers.
- Custom design is available.


Feature

- Magnetically unshielded construction.
- Ideally used in portable devices such as Mobilephone, DSC/DVC, MP3, PDA, etc as DC-DC Converter inductors or transformers, especially suitable for White LED drive.
- RoHS Compliance

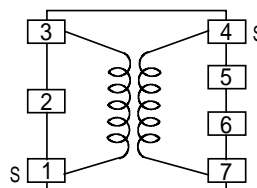
Dimensions (mm)

Land Pattern (mm)

Specification (for transformers)

Sample No.	Inductance (1-3) 1kHz/1V	Inductance (4-7) 1kHz/1V	D.C.R. (1-3)	D.C.R. (4-7)	Rated Current (1-3)
6305-JPS-038	258μH±10%	238μH(Ref)	2.5Ω Max.	3.4Ω Max.	240mA

Rated current: The D.C. current at which the inductance decreases to 90% of it's initial value or when $t=40$, whichever is lower ($T_a=20$).

Schematics (Bottom)

" S " is winding start.



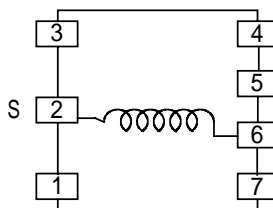
Type: CMD-6N

Specification-1 (for inductors)

Part Name	Stamp	Inductance [Within] 1	D.C.R.() [Max.] (at 20)	Rate Current (A) 2	Qu [Min.] 1	S.R.F. (MHz) [Min.]
CMD6NNP-220K	220K	22 μ H \pm 10%	0.14	1.3	56	18
CMD6NNP-270K	270K	27 μ H \pm 10%	0.16	1.2	54	17
CMD6NNP-330K	330K	33 μ H \pm 10%	0.18	1.1	51	15
CMD6NNP-390K	390K	39 μ H \pm 10%	0.2	1.0	46	13
CMD6NNP-470K	470K	47 μ H \pm 10%	0.23	870m	44	12
CMD6NNP-560K	560K	56 μ H \pm 10%	0.26	790m	34	11
CMD6NNP-680K	680K	68 μ H \pm 10%	0.32	760m	41	10
CMD6NNP-820K	820K	82 μ H \pm 10%	0.37	670m	33	9.3
CMD6NNP-101K	101K	100 μ H \pm 10%	0.44	600m	48	8.1
CMD6NNP-121K	121K	120 μ H \pm 10%	0.5	550m	58	7.7
CMD6NNP-151K	151K	150 μ H \pm 10%	0.65	490m	73	6
CMD6NNP-181K	181K	180 μ H \pm 10%	0.78	450m	72	5.8
CMD6NNP-221K	221K	220 μ H \pm 10%	1.03	420m	80	5.5
CMD6NNP-271K	271K	270 μ H \pm 10%	1.19	360m	79	5
CMD6NNP-331K	331K	330 μ H \pm 10%	1.55	320m	91	4.5
CMD6NNP-391K	391K	390 μ H \pm 10%	1.76	300m	91	4.2
CMD6NNP-471K	471K	470 μ H \pm 10%	2	290m	86	3.3
CMD6NNP-561K	561K	560 μ H \pm 10%	2.47	250m	92	2.9
CMD6NNP-681K	681K	680 μ H \pm 10%	2.84	230m	99	2.8
CMD6NNP-821K	821K	820 μ H \pm 10%	3.26	210m	100	2.5
CMD6NNP-102K	102K	1.0 mH \pm 10%	4.78	190m	108	2.4

Schematics (Bottom)

"S" is winding start.



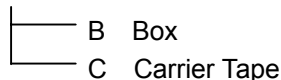
Type: CMD-6N

Specification-2 (for inductors)

Part Name	Stamp	Inductance [Within] 1	D.C.R.() [Max.] (at 20)	Rate Current (A) 2	Qu [Min.] 1	S.R.F. (MHz) [Min.]
CMD6NNP-220K B	220K	22 μ H \pm 10%	0.11	1.1	56	18
CMD6NNP-270K B	270K	27 μ H \pm 10%	0.13	1	54	17
CMD6NNP-330K B	330K	33 μ H \pm 10%	0.15	910m	51	15
CMD6NNP-390K B	390K	39 μ H \pm 10%	0.17	840m	46	13
CMD6NNP-470K B	470K	47 μ H \pm 10%	0.21	740m	44	12
CMD6NNP-560K B	560K	56 μ H \pm 10%	0.24	710m	34	11
CMD6NNP-680K B	680K	68 μ H \pm 10%	0.31	660m	41	10
CMD6NNP-820K B	820K	82 μ H \pm 10%	0.36	600m	33	9.3
CMD6NNP-101K B	101K	100 μ H \pm 10%	0.5	560m	48	8.1
CMD6NNP-121K B	121K	120 μ H \pm 10%	0.57	460m	58	7.7
CMD6NNP-151K B	151K	150 μ H \pm 10%	0.67	430m	73	6
CMD6NNP-181K B	181K	180 μ H \pm 10%	0.95	400m	72	5.8
CMD6NNP-221K B	221K	220 μ H \pm 10%	1.11	370m	80	5.5
CMD6NNP-271K B	271K	270 μ H \pm 10%	1.4	300m	79	5
CMD6NNP-331K B	331K	330 μ H \pm 10%	1.62	270m	91	4.5
CMD6NNP-391K B	391K	390 μ H \pm 10%	2.16	240m	91	4.2
CMD6NNP-471K B	471K	470 μ H \pm 10%	2.46	230m	86	3.3
CMD6NNP-561K B	561K	560 μ H \pm 10%	2.8	200m	92	2.9
CMD6NNP-681K B	681K	680 μ H \pm 10%	3.22	180m	99	2.8
CMD6NNP-821K B	821K	820 μ H \pm 10%	4.48	160m	100	2.5
CMD6NNP-102K B	102K	1.0 mH \pm 10%	5.18	150m	108	2.4

Description of part name

CMD6NNP-220K



1: Measuring Frequency

Inductance	22 μ H ~ 82 μ H	at 2.52MHz	Qu	22 μ H ~ 82 μ H	at 2.52MHz
	100 μ H ~ 1.0mH	at 100kHz		1.2mH ~ 10mH	at 50kHz
				100 μ H ~ 10mH	at 1kHz

 2. Rated current: The D.C. current at which the inductance decreases to 90% of it's initial value or when $t=40$, whichever is lower($T_a=20$).