

**Type: CDH36D07**

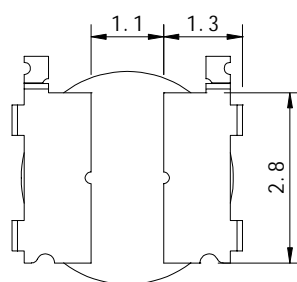
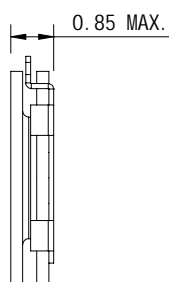
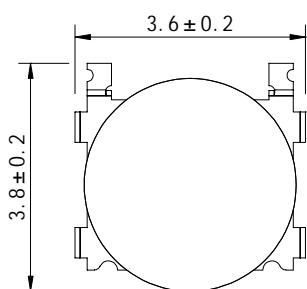
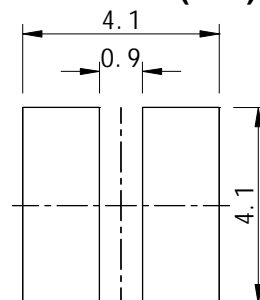
# UNDER DEVELOPMENT

**Product Description**

- 4.0 × 4.0mm Max.(L × W), 0.85mm Max. Height.
- Inductance range: 1.0 ~ 10 μH
- Rated current range: 0.36 ~ 1.21A
- In addition to the standard versions of inductors shown here, custom inductors are available to meet your exact requirements.


**Feature**

- Magnetically unshielded construction.
- Ideally used in Mobilephone, PDA, MP3, DSC/DVC, HDD, etc as DC-DC Converter inductors.
- RoHS Compliance

**Dimensions (mm)**

**Land Pattern (mm)**

**Specification**

Part Name	Stamp	Inductance (μH) [ Within ] 100kHz	D.C.R.( ) Max.(Typ.) (at 20 )	Saturation Current (A) 1	Temperature Rise current (A) 2
CDH36D07NP-1R0NC	1R0	1.0 μH ± 30%	0.14 (0.11)	1.79	1.21
CDH36D07NP-1R5NC	1R5	1.5 μH ± 30%	0.18 (0.14)	1.52	1.08
CDH36D07NP-2R2MC	2R2	2.2 μH ± 20%	0.23 (0.18)	1.24	0.93
CDH36D07NP-2R7MC	2R7	2.7 μH ± 20%	0.26 (0.21)	1.12	0.89
CDH36D07NP-3R3MC	3R3	3.3 μH ± 20%	0.30 (0.24)	0.98	0.82
CDH36D07NP-4R7MC	4R7	4.7 μH ± 20%	0.39 (0.31)	0.90	0.70
CDH36D07NP-6R8MC	6R8	6.8 μH ± 20%	0.55 (0.44)	0.70	0.63
CDH36D07NP-8R2MC	8R2	8.2 μH ± 20%	0.83 (0.66)	0.65	0.49
CDH36D07NP-100MC	100	10.0 μH ± 20%	0.96 (0.77)	0.58	0.36

1. Saturation Current: The DC current at which the inductance decreases to 70% of it's nominal value.
2. Temperature rise current: The DC current at which the temperature rise is t = 40 . (Ta = 20 )

**This datasheet is not a final issue, and maybe something will be changed before production.**