

**Type: ACL80B**

**Product Description**

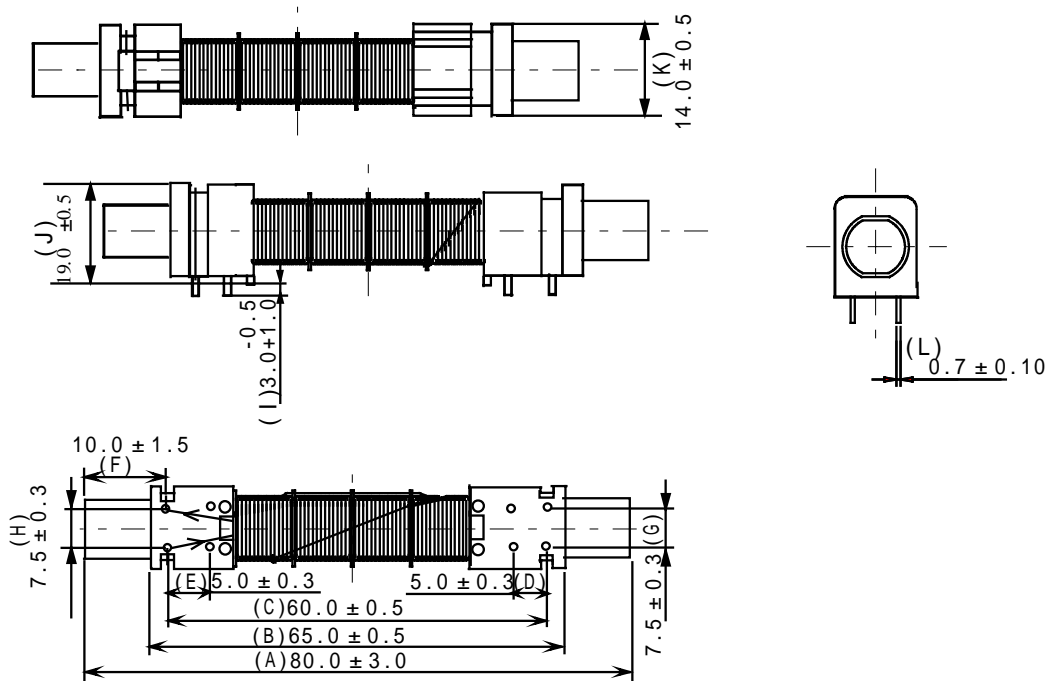
- 83.0 x 14.5mm Max.(L x W), 19.5mm Max. Height.
- Operating frequency: 40kHz, 60kHz, 77.5kHz.



**Feature**

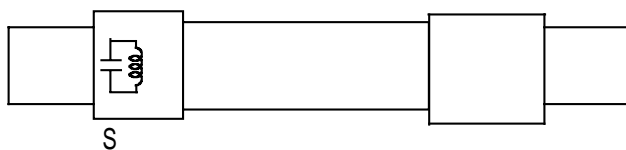
- Radio control clock antenna with capacitor.
- Ideally used in Radio control clock receiver , car, highway, railway, and hospital etc.
- RoHS Compliance.

**Dimensions (mm)**



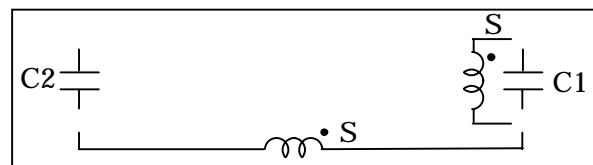
**Schematics(Bottom)**

**Single frequency**



"S" is winding start.

**Dual frequency**



"S" is winding start.

**Type: ACL80B**
**Specification**

Single frequency

| Part Name    | Spec. No.  | Inductance (Ref.) | Tuning Frequency      | Impedance (Typ.) |
|--------------|------------|-------------------|-----------------------|------------------|
| 40K08TNP     | S-074-6574 | 10mH              | 40.0kHz $\pm$ 0.2kHz  | 350k             |
| 60K08S       | 2406-T011  | 3.7mH             | 60.0kHz $\pm$ 0.2kHz  | 125k             |
| 77K08T       | 2406-T021  | 2.8mH             | 77.5 kHz $\pm$ 0.2kHz | 235k             |
| ACL80B-40/60 | S-097-6209 | 7.2Mh             | 40kHz/60kHz           | 330 k /570 k     |

Dual frequency (ACL80B-40/60)

|                | Switch | Test Terminal | Impedance (TYP.) | Tuning Frequency [ Within ] |
|----------------|--------|---------------|------------------|-----------------------------|
| 40kHz Selected | SW ON  | (1-5)         | 330k             | 40.0kHz $\pm$ 0.2kHz        |
| 60kHz Selected | SW OFF | (1-5)         | 570k             | 60.0kHz $\pm$ 0.3kHz        |

Dual frequency test circuit

