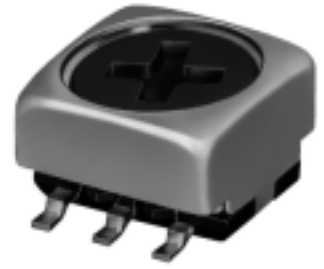
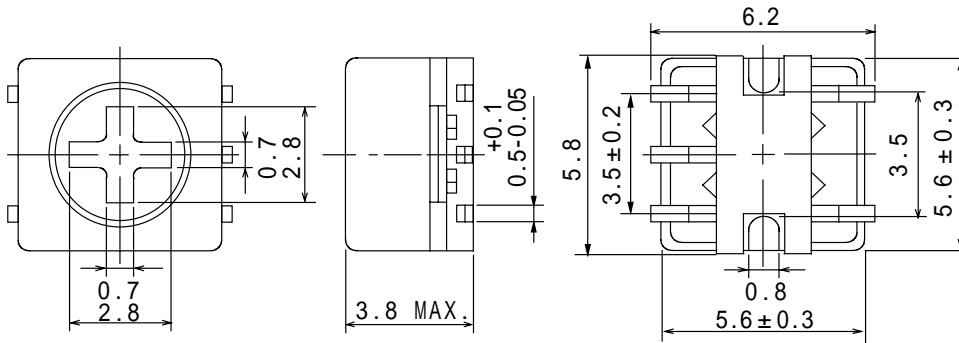
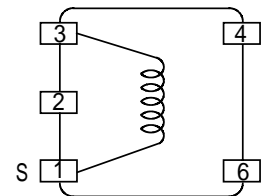


Type: CP53
Product Description

- 6.2 × 5.9mm Max.(L × W), 3.8mm Max. Height.
- Inductance range:800μH Max., reference unloaded Q:50
- Operating Frequency:15MHz Max.
- In addition to the reference versions of parameters shown here, custom designs are available to meet your exact requirements.


Feature

- Low profile variable type of tight-space design
- Ideally used in automotive tuner units of high reliabilities.
- RoHS Compliance

Dimensions(mm)

Connection (Bottom)


"S" is winding start

- * Dimension does not include solder used on coil.
- * Pin pitch shall be measured at the root of terminal.
- * Dimension without tolerance are approx.

Specification

NO.	Part No.	Stamp	Inductance [Variable] 1	Measured Frequency	Unloaded Q [MIN.]
01	CP53-4R8C	4R8	4.8 μ H±2%	7.96MHz	55
02	CP53-4R8B				
03	CP53-6R8C	6R8	6.8 μ H±2%	7.96MHz	50
04	CP53-6R8B				
05	CP53-15ØC	15Ø	15 μ H±2%	2.52MHz	45
06	CP53-15ØB				
07	CP53-23ØC	23Ø	23 μ H±2%	2.52MHz	50
08	CP53-23ØB				

* Part No. Description

(1) In case of reel packing: CP53-XXXX

(2) IN case of box packing: CP53-XXXB