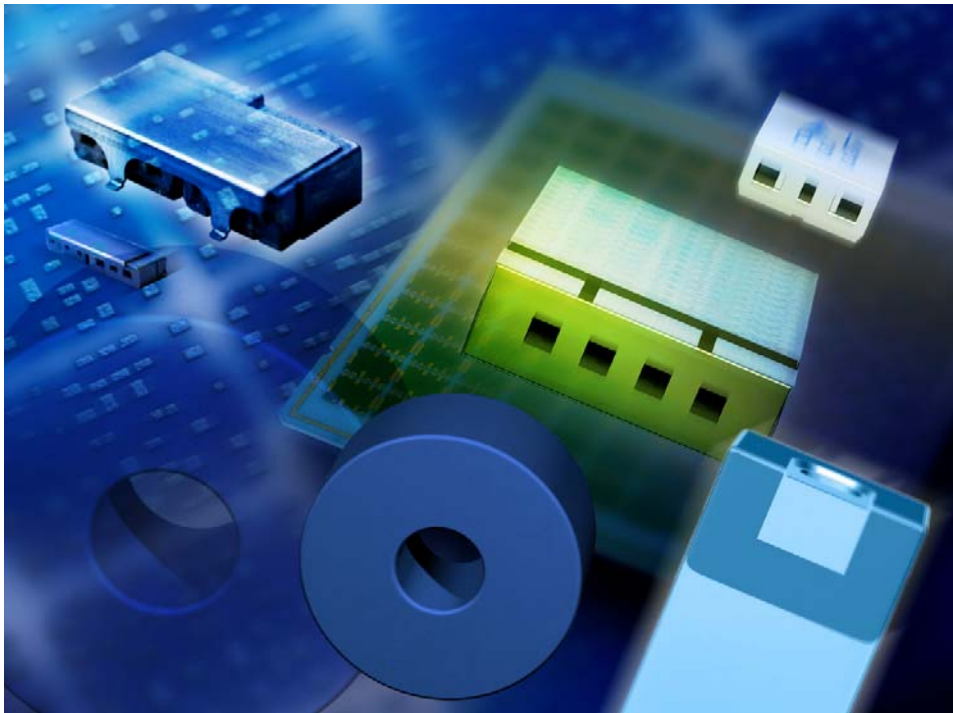


Data Sheet



Features

- ### One feed Patch CP (right) Antenna
- $\text{MgTiO}_3\text{-CaTiO}_3$ ($\epsilon_r = 21$ / $TC_f = 0 \pm 10$ ppm/K) with a coating of burn in silver ($>5\mu\text{m}$)
- Feed contact: pin of brass, tin coated ($5\mu\text{m}$ to $10\mu\text{m}$ Sn)
- Option of adhesive tape for mounting of ceramic body

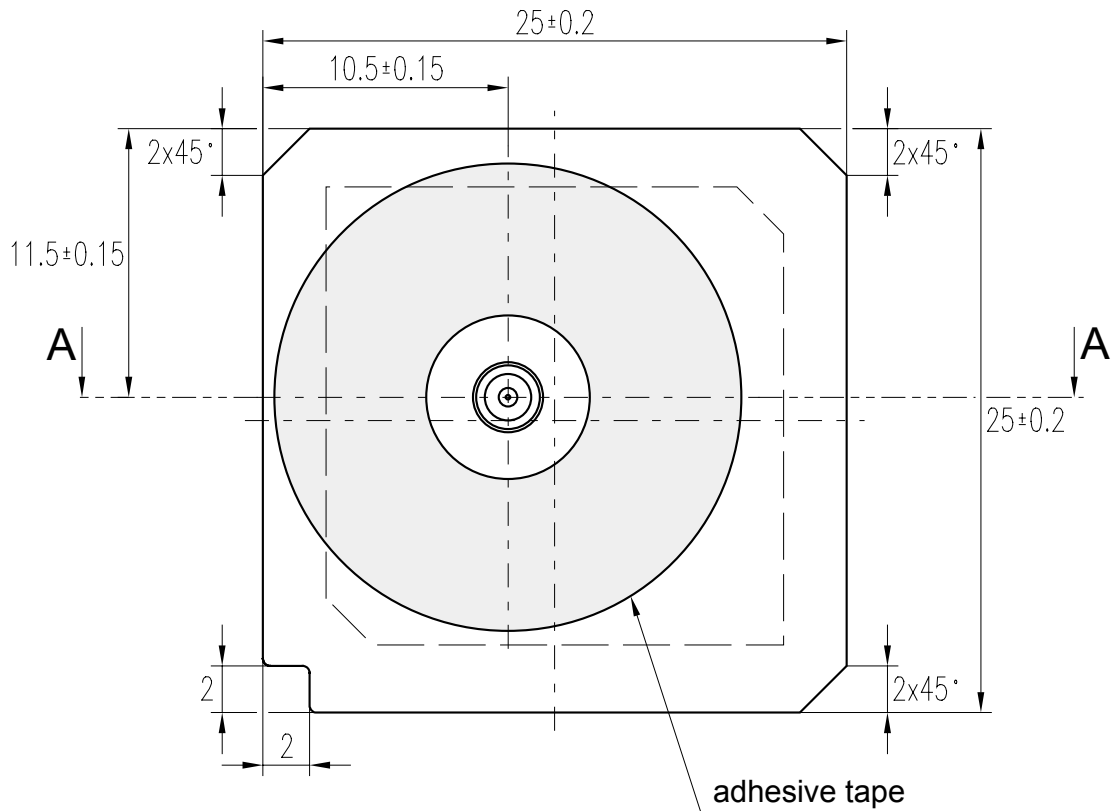
Index

- Page 2
 - Component drawing
- Page 3
 - Characteristics
 - Maximum ratings
 - Vertical directional diagram
 - VSWR-Diagram, Smith-Diagram
- Page 4
 - Processing information
 - Soldering requirements
 - Delivery mode

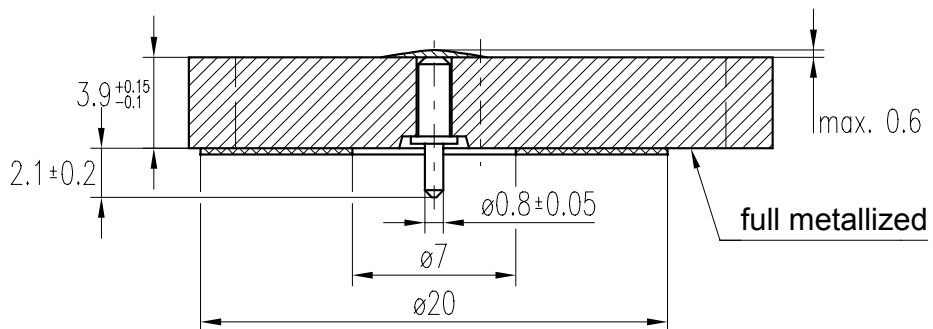
ISSUE DATE	03.03.04	ISSUE	B	PUBLISHER	SAW MWC PD	PAGE	1/4
------------	----------	-------	---	-----------	------------	------	-----

Data Sheet

Component drawing



Profile A-A:



Data Sheet

Characteristics

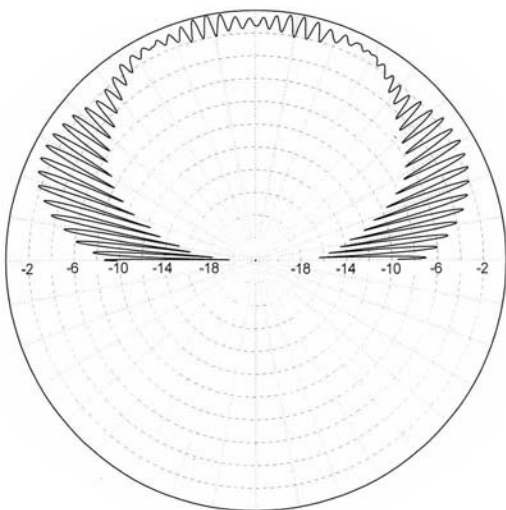
		min.	typ.	max.	
Center frequency ¹⁾	f_c	-	t.b.d.	-	MHz
Center frequency ²⁾	f_c	-	1575,4	-	MHz
Bandwidth	B		20		MHz
Standing wave ratio	SWR		1.5	2.0	
Impedance	Z		50		Ω
Gain at f_c ($\theta=0^\circ$)	G		5		dBi
Axial ratio ($-30^\circ < \theta < 30^\circ$, $0 < \varphi < 360^\circ$)	A		3		dB

Notes: ¹⁾ Measured on brass plate 120x120 mm² with SMA connector
²⁾ Measured in customer application

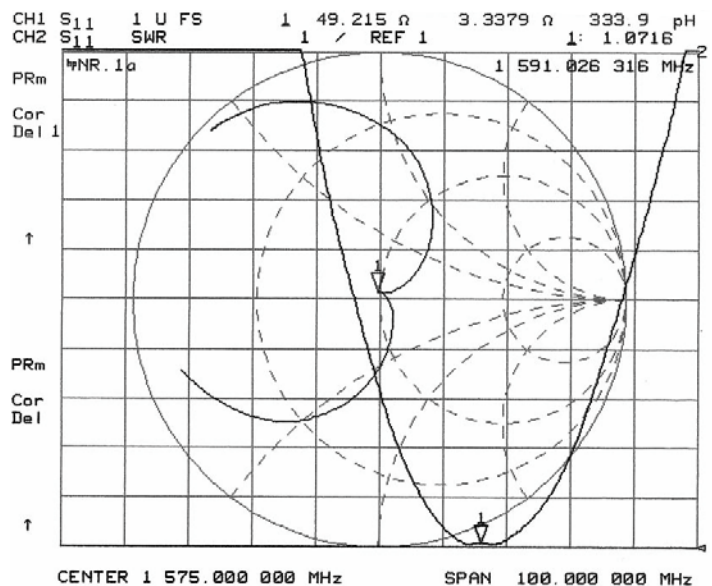
Maximum ratings

IEC climatic category (IEC 68-1)		- 40/+ 90/56	
Operating temperature	T_{op}	-40 / 90	°C

Vertical directional diagram
(spinning dipole method)



VSWR-Diagram
Smith-Diagram



Data Sheet

Processing information

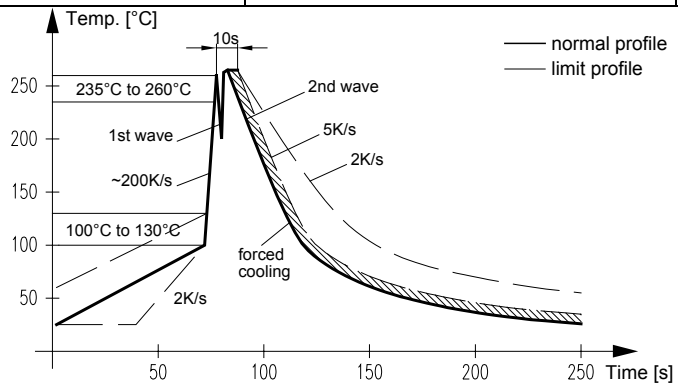
ZNr.: 1 (ANTENNEN.XLS)

- Wettability acc. to IEC 68-2-58: $\geq 75\%$ (after aging)

Soldering requirements

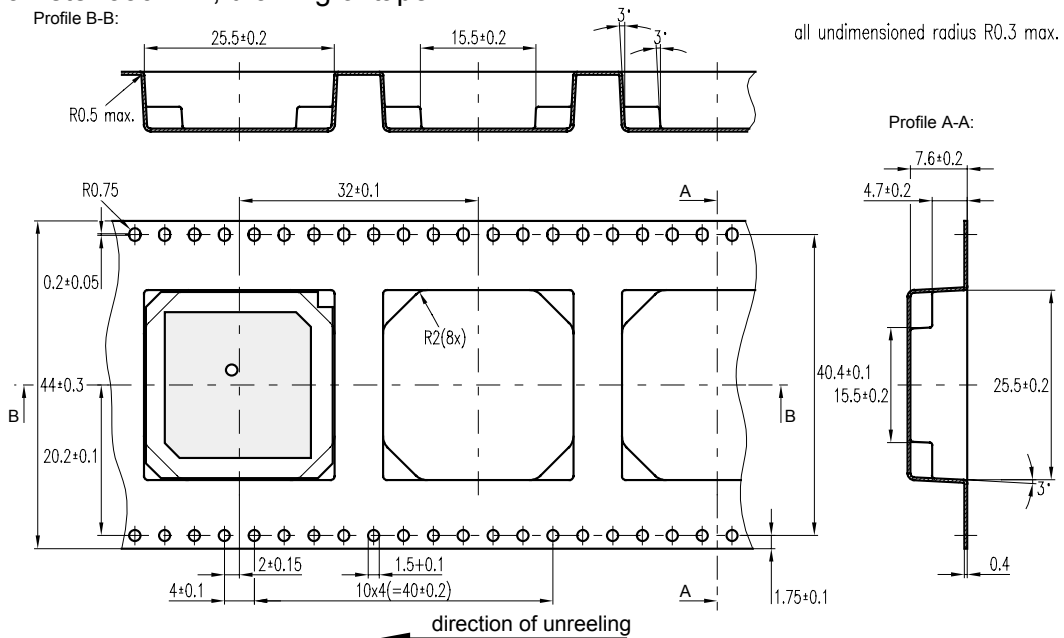
Soldering type	wave soldering	
Maximum soldering temperature	260 (max. 10 sec.)	°C

Recommended soldering conditions :



Delivery mode

- Blister tape to IEC 286-3, PS , grey
- Pieces/tape: 200
- Reel: diameter 330 mm; drawing of tape:



© EPCOS AG 2001. All Rights Reserved. Reproduction, publication and dissemination of this data sheet, enclosures hereto and the information contained therein without EPCOS' prior express consent is prohibited. The information contained in this data sheet describes the type of component and shall not be considered as guaranteed characteristics. Purchase orders are subject to the General Conditions for the Supply of Products and Services of the Electrical and Electronics Industry recommended by the ZVEI (German Electrical and Electronic Manufacturers' Association), unless otherwise agreed.

ISSUE DATE	03.03.04	ISSUE	B	PUBLISHER	SAW MWC PD	PAGE	4/4
------------	----------	-------	---	-----------	------------	------	-----